



Panasonic SA-HT810V VHS Drive Replacement

This is a brief guide on removing and reinstalling a VHS drive in a Panasonic SA-HT810V

Written By: Nathan Cheadle





TOOLS:

- [64 Bit Driver Kit](#) (1)
-

Step 1 — VHS Drive



- With the front display of the device facing you, rotate the device 90 degrees counter clockwise.
- Now rotate the device 180 degrees and remove the second screw.
- Remove the screw that is on the right side of the panel facing you.
 - All screws will need to be removed with a phillips head screwdriver.

Step 2



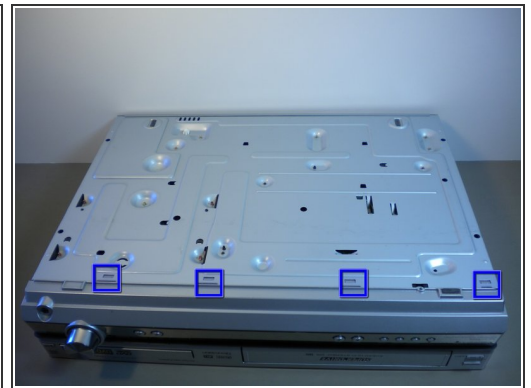
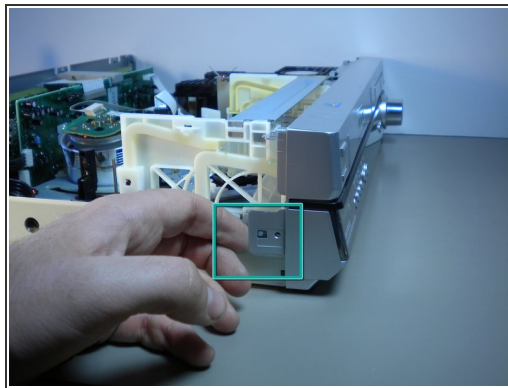
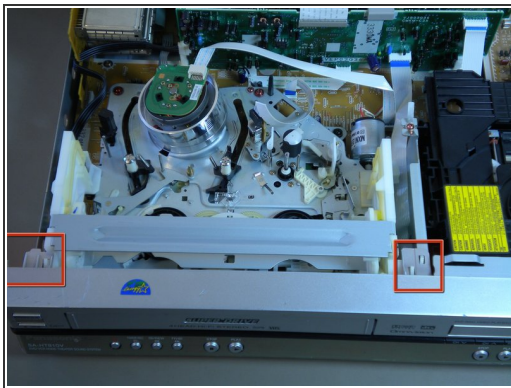
- Rotate the device so that the back faces you.
- With a phillips heat screwdriver, locate and remove the four screws highlighted by the red circles in image one.

Step 3



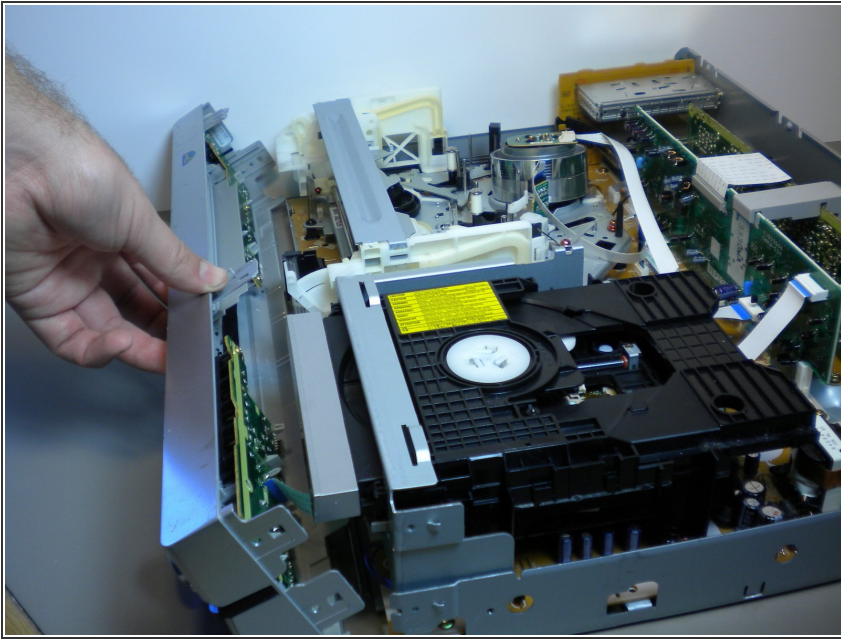
- Before removing cover make sure that the back of the device is facing you.
- Remove the top cover by bending out on the sides, and pulling the cover towards you while applying upward pressure.

Step 4



- Pull up the two tabs on top
- Pull the the three tabs on the side there is one on the left and two and the right side of the device when it is facing you.
- Depress the four tabs on the bottom of the device.

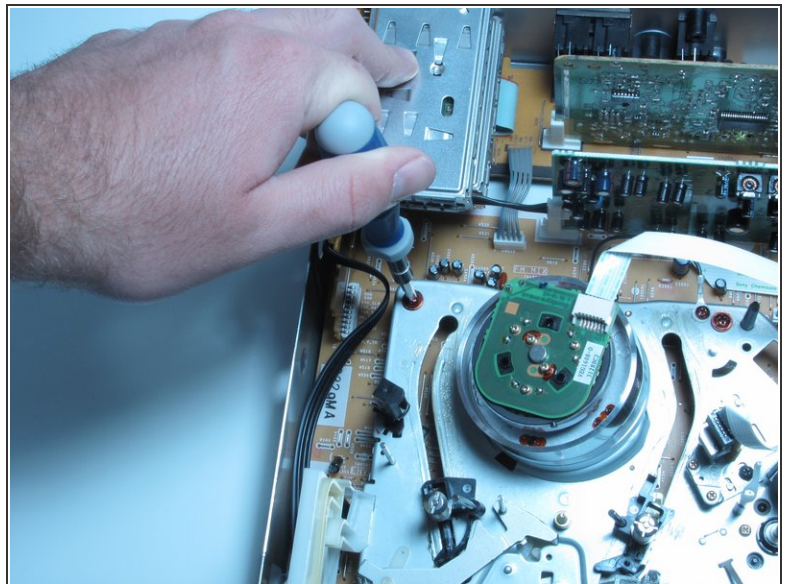
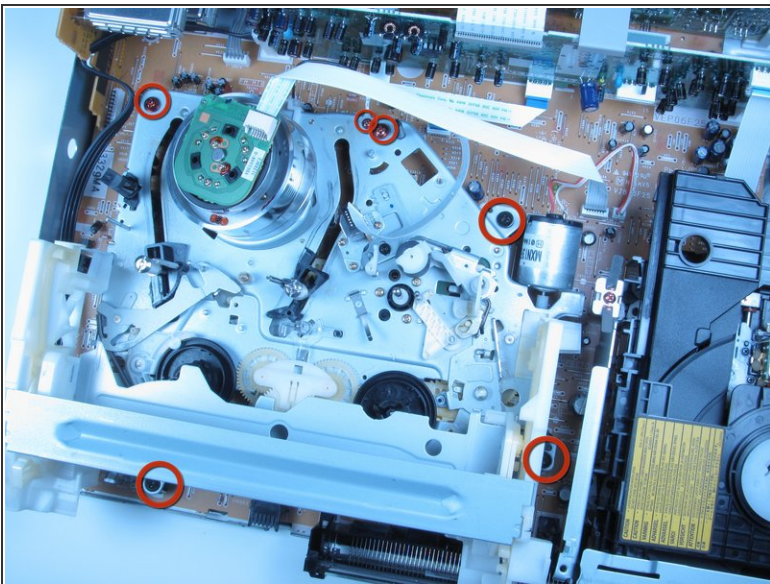
Step 5



- Carefully pull off the front panel of the device.

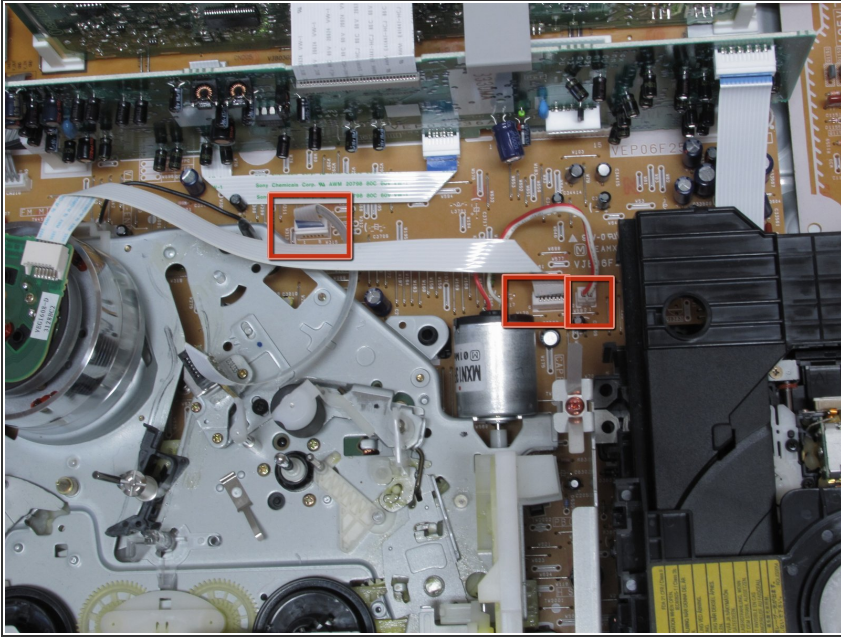
⚠ The front is attached to the device with cables so be careful when removing.

Step 6



- With the device front facing you remove the six screws with a phillips head screwdriver around the VHS drive.

Step 7



- Remove the three cables attaching the VHS to the Mother Board.
- ⚠ Carefully pull the VHS drive out of the device and follow the steps in reverse to place the new one in.

To reassemble your device, follow these instructions in reverse order.