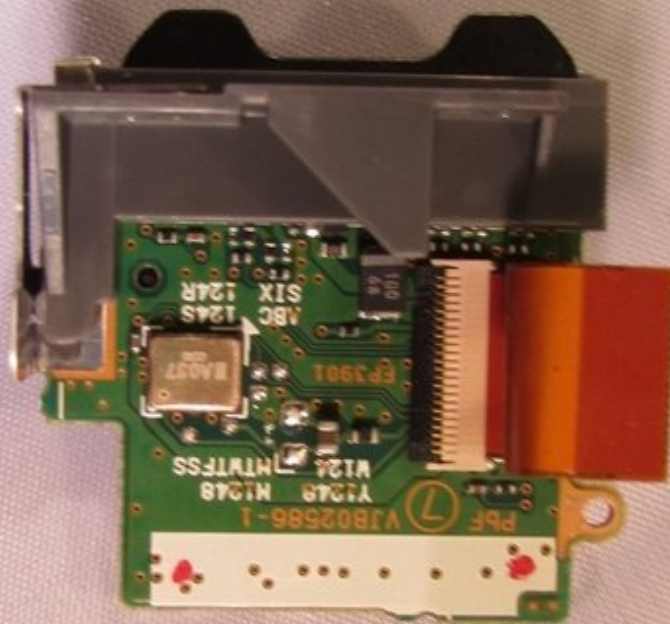


Written By: Caleb Osborne





TOOLS:

- [iFixit Opening Tools](#) (1)
- [Screwdriver](#) (1)
- [Tweezers](#) (1)

Step 1 — Remove Bottom Screws



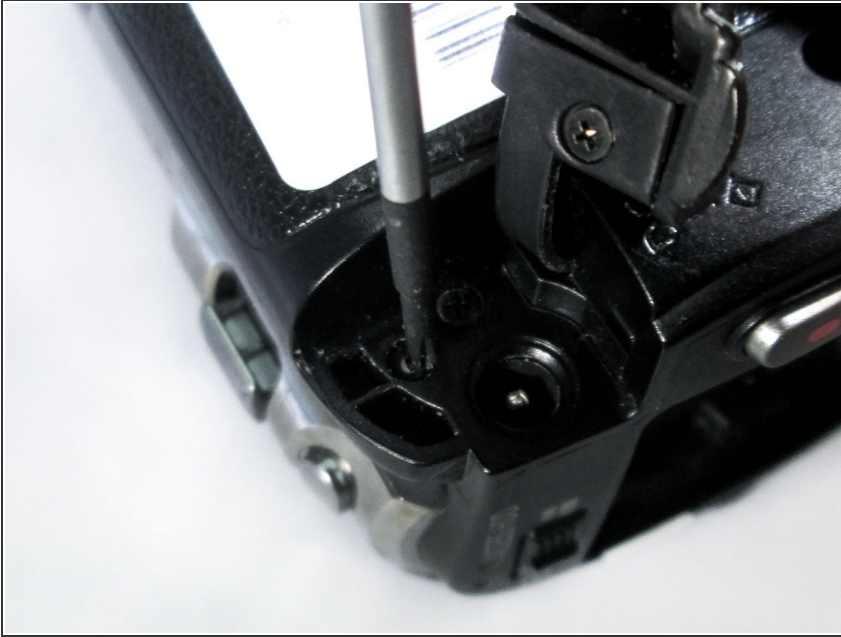
- Unscrew the four 4 mm screws on the bottom of the camcorder.
- ⓘ The screws are two different colors: three black, one silver.

Step 2 — Remove Side Screws



- Unscrew the three 6 mm screws on the handstrap-side of the camcorder.

Step 3 — Remove DC Input Terminal Screws



- Pull the charging port (DC input terminal) cover back and remove the 4 mm screw located next to the input terminal.

Step 4 — Remove LCD Monitor Screws



- Unscrew the two black 4 mm screws underneath the LCD Monitor.
 - ❗ One screw is located by the hinge of the LCD Monitor. The second is close to the upper-back corner of the camcorder body.

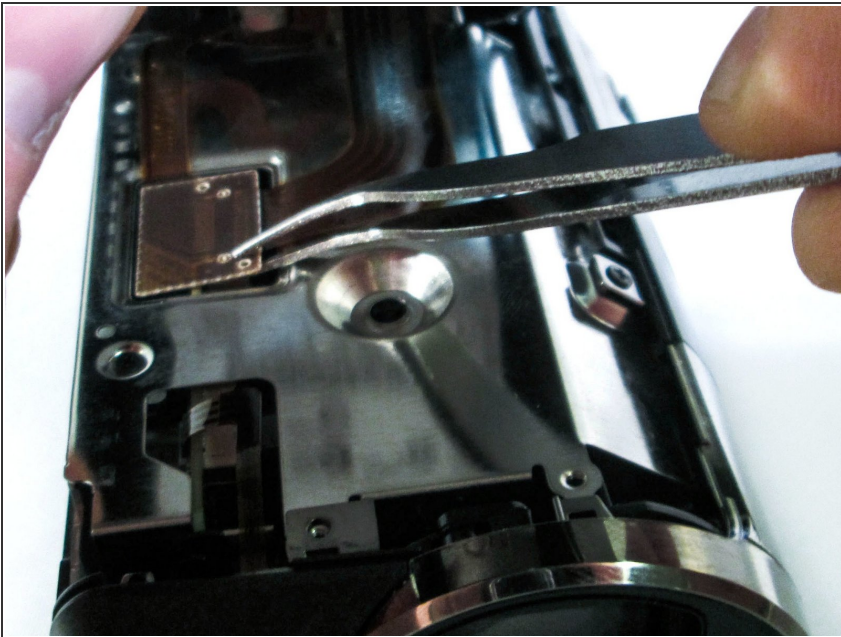
Step 5 — Detach Casing from Body



- Pull the casing under the hand strap directly outward until casing detaches from camcorder

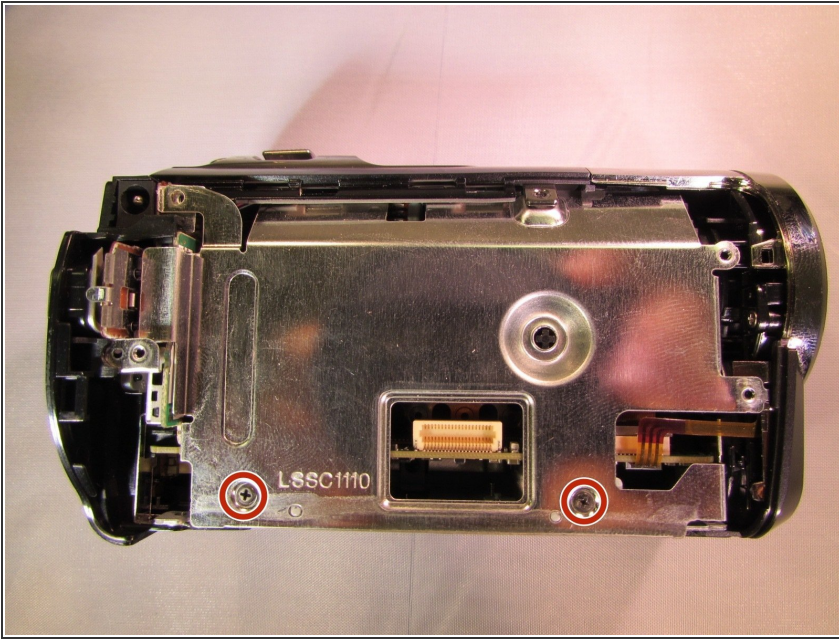
 Detach gently so the ribbon cable is not damaged!

Step 6 — Detach Ribbon Cable from Body



- Use tweezers to grab the ribbon cable at the connection point and slowly lift up until the connection is separated.
- ⓘ This point connects the HDD to the motherboard.

Step 7 — Rear Cover



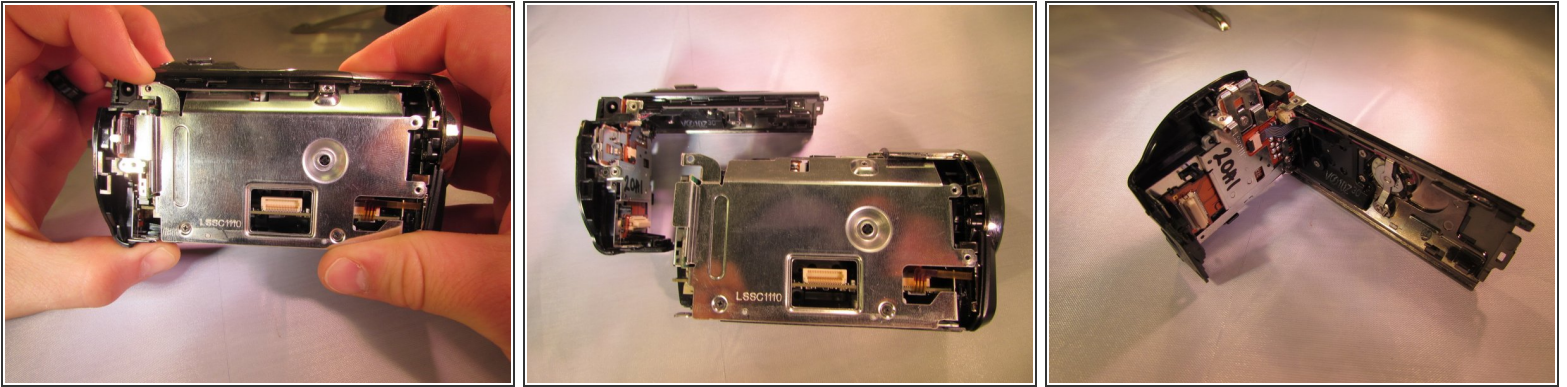
- Unscrew the two black 4 mm screws from metal casing around the motherboard.

Step 8



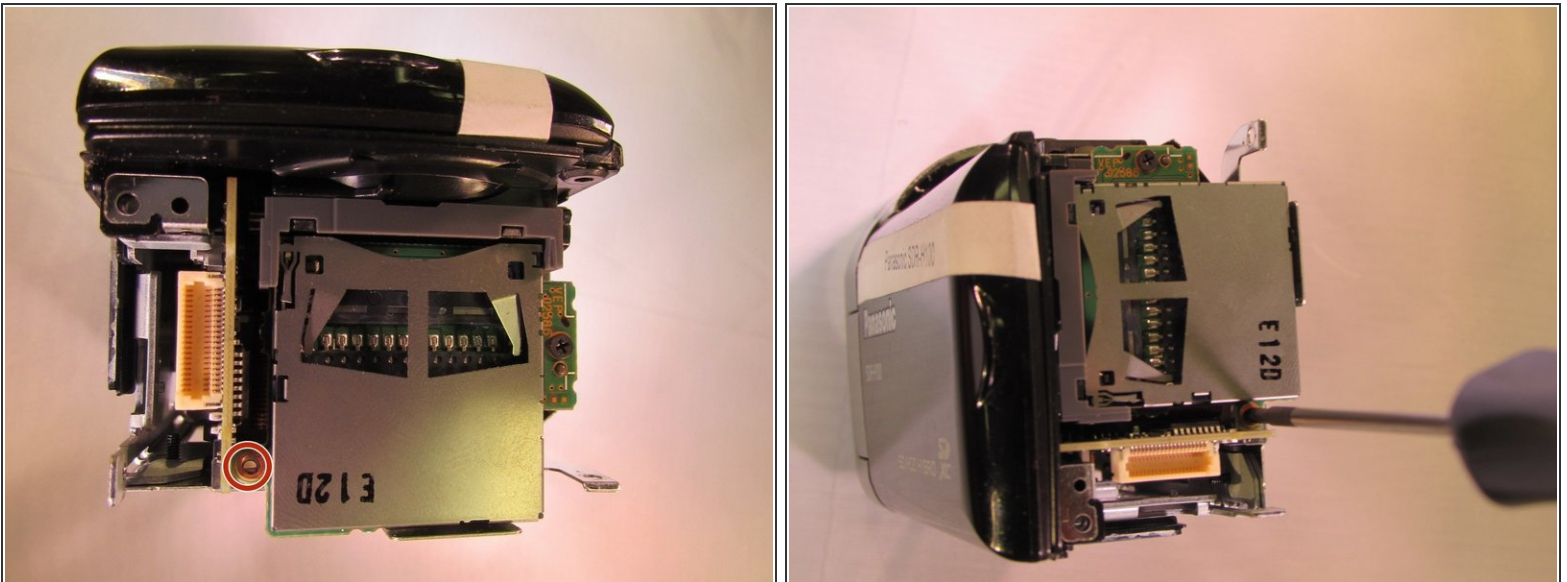
- Remove the black 4 mm screw from the back of the camcorder underneath where the battery would have been.

Step 9



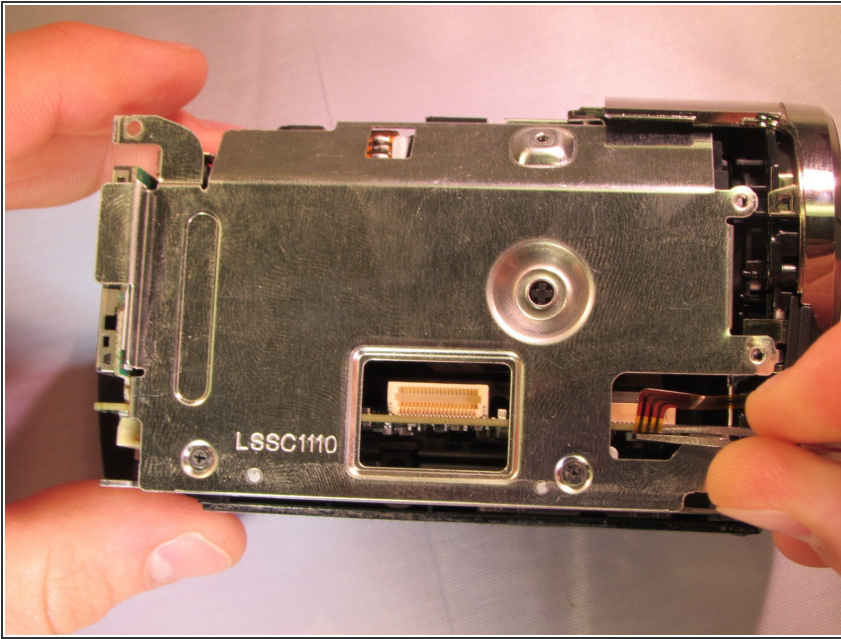
- Pull the plastic cover on the back out and up slightly until the back feels like it's free, then pull back on the plastic (The top cover piece and back will be detached).

Step 10 — Front Cover and Midframe



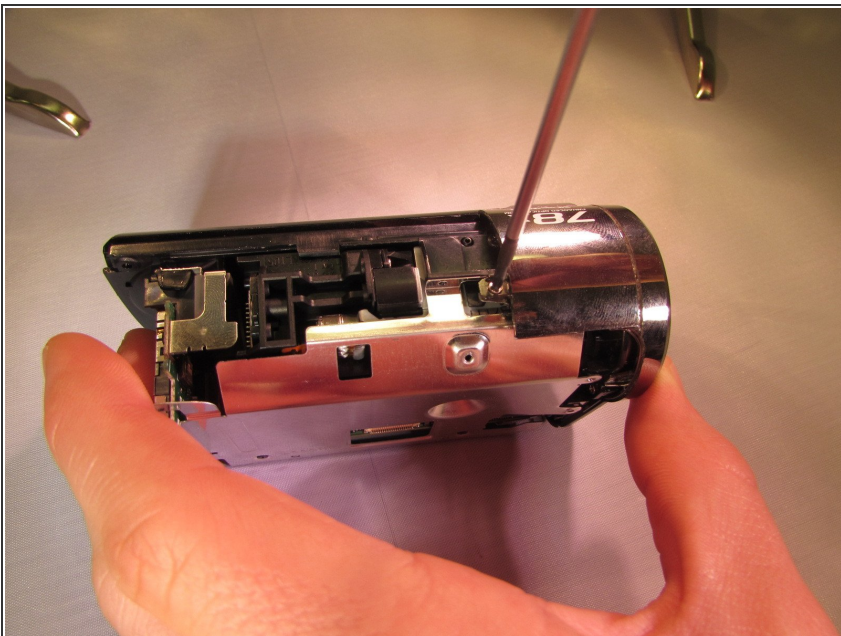
- Remove the black 4 mm screw located on the back of the camcorder under the SD card slot.

Step 11



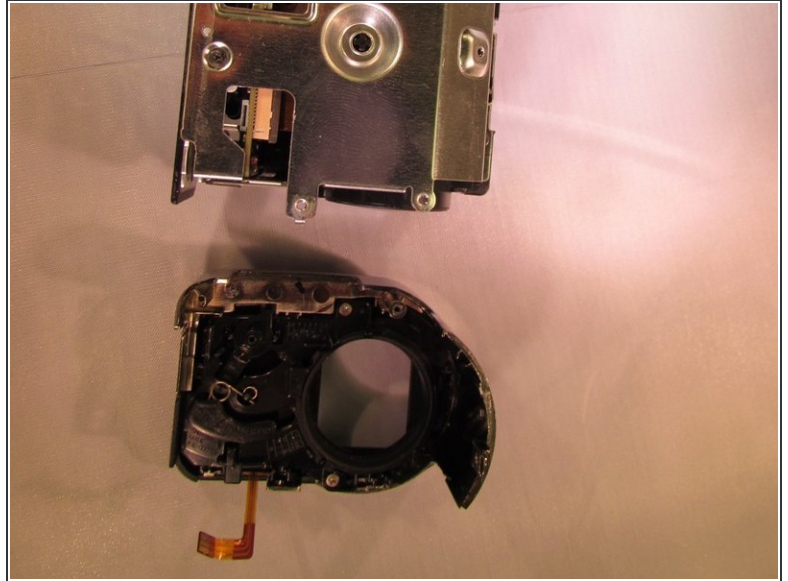
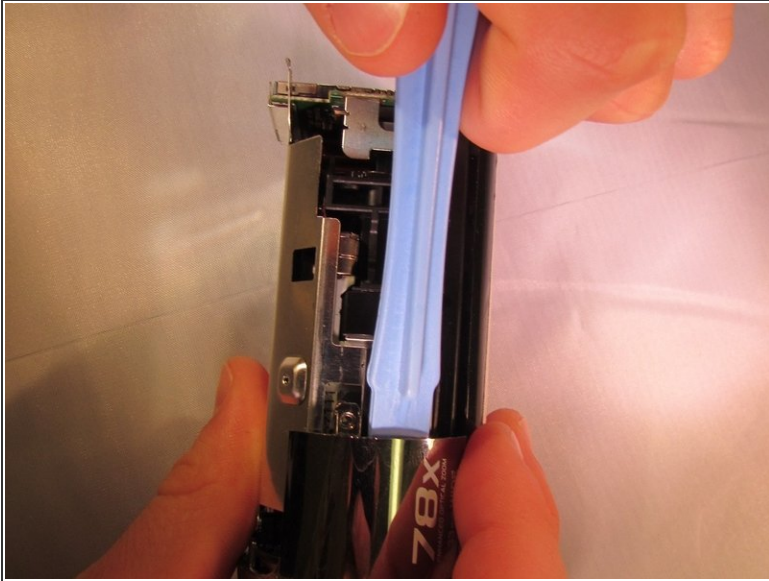
- There is a small copper ribbon on the right side of the device. Pull gently with the tweezers upward from the right side to get the copper ribbon free.

Step 12



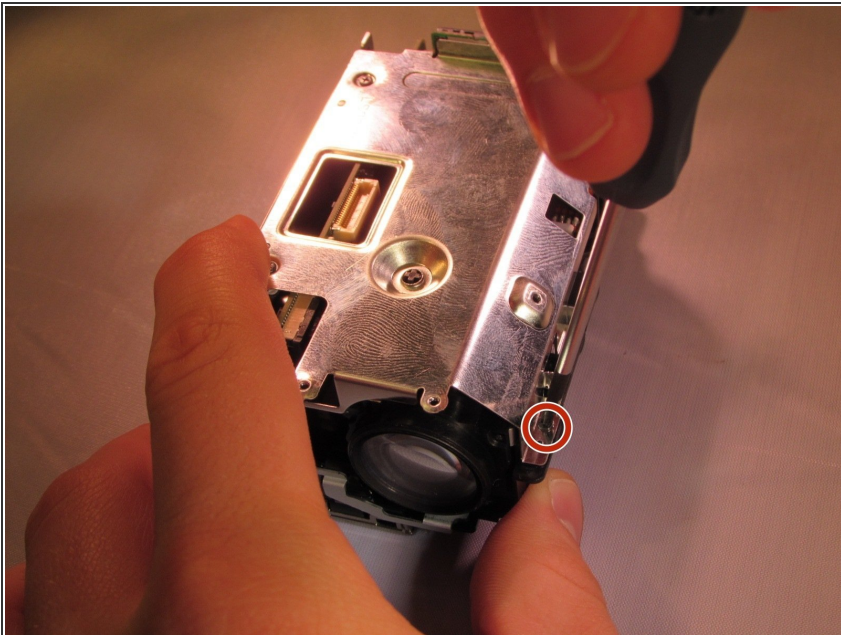
- Unscrew the silver 4 mm screw from on top of the camcorder.

Step 13



- Pry upwards on the front cover from the top of the device and with your other hand pull straight out on the front of the device (The front cover will be detached and free).

Step 14



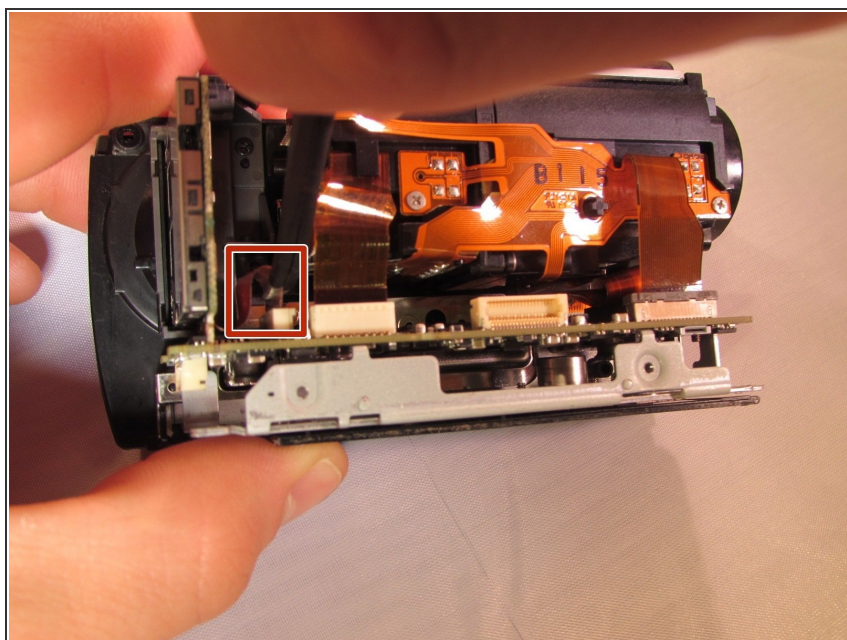
- Remove the 6 mm screw on the top of the metal casing which was under the front cover.

Step 15



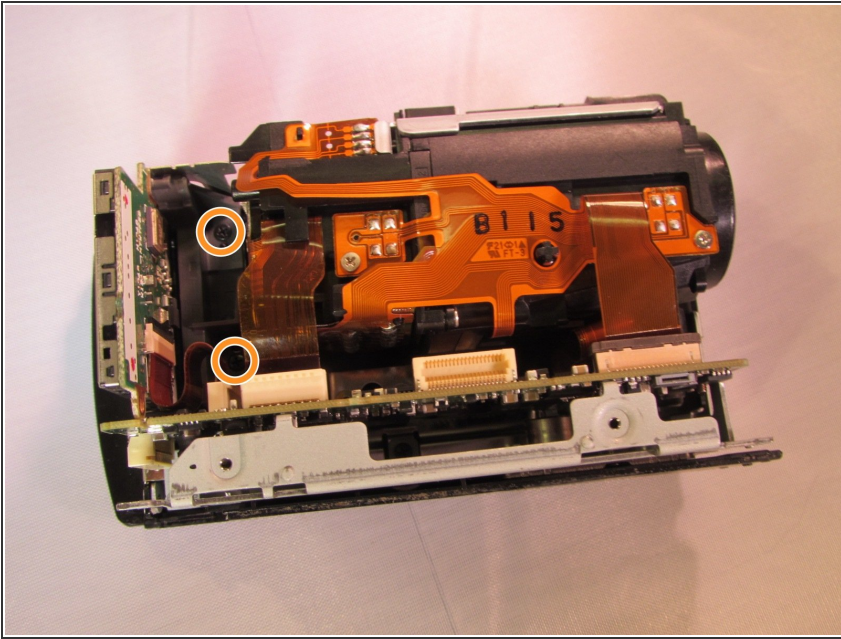
- Pull the metal casing straight off (The metal casing will be detached from the rest of the device).

Step 16 — SD Card Slot



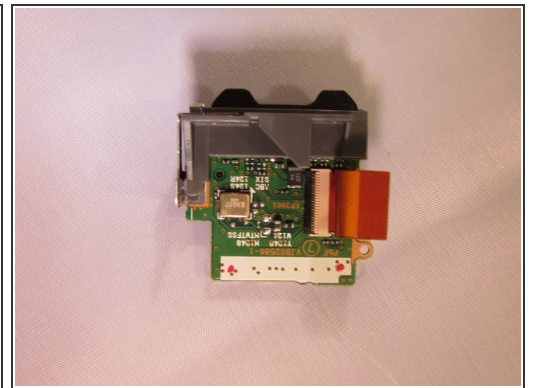
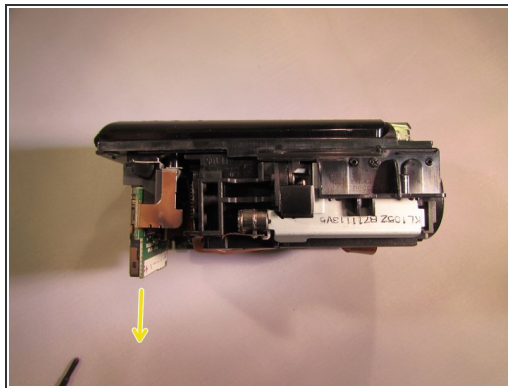
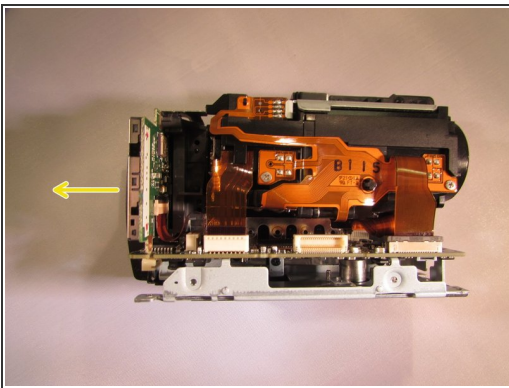
- Disconnect the ribbon cable on the back of the SD card slot.

Step 17



- Locate the two black 4 mm screws located on the inside of the device and unscrew them.

Step 18



- Pull the SD card slot slightly to the side and detach the SD card slot (the SD card slot is ready to be replaced).

To reassemble your device, follow these instructions in reverse order.