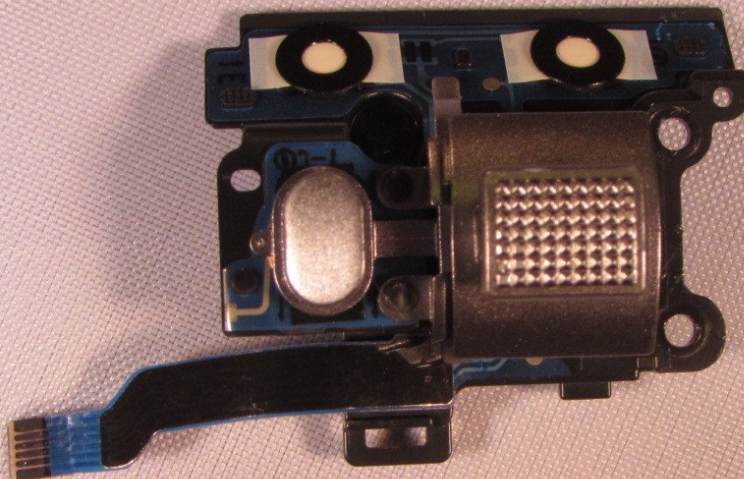




# Panasonic SDR H-100 Zoom Lever Replacement

The zoom lever is what controls how and when the camcorder zooms in and back out.

Written By: Caleb Osborne





## TOOLS:

- [Screwdriver](#) (1)
- [Tweezers](#) (1)
- [iFixit Opening Tools](#) (1)



## Step 1 — Remove Bottom Screws



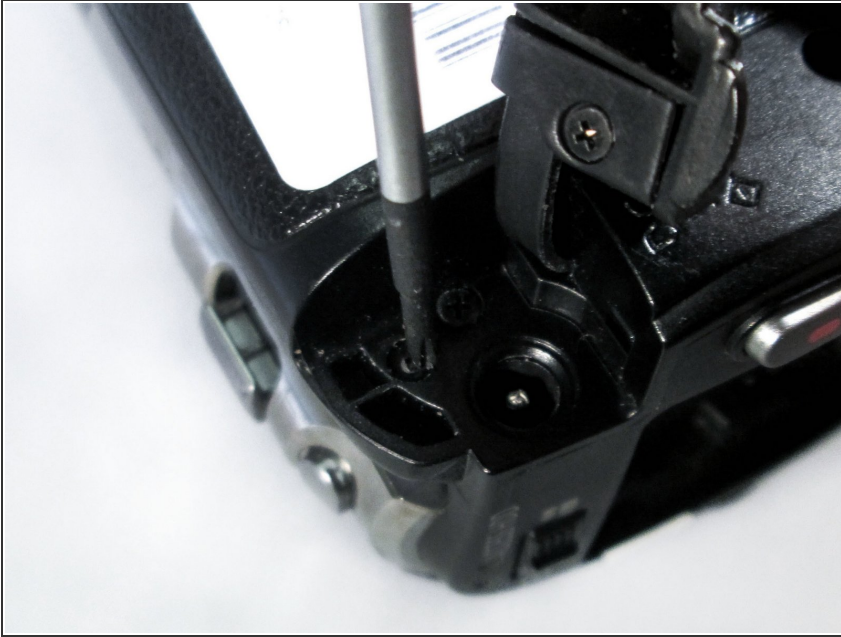
- Unscrew the four 4 mm screws on the bottom of the camcorder.
- ⓘ The screws are two different colors: three black, one silver.

## Step 2 — Remove Side Screws



- Unscrew the three 6 mm screws on the handstrap-side of the camcorder.

### Step 3 — Remove DC Input Terminal Screws



- Pull the charging port (DC input terminal) cover back and remove the 4 mm screw located next to the input terminal.

### Step 4 — Remove LCD Monitor Screws



- Unscrew the two black 4 mm screws underneath the LCD Monitor.
  - ❗ One screw is located by the hinge of the LCD Monitor. The second is close to the upper-back corner of the camcorder body.



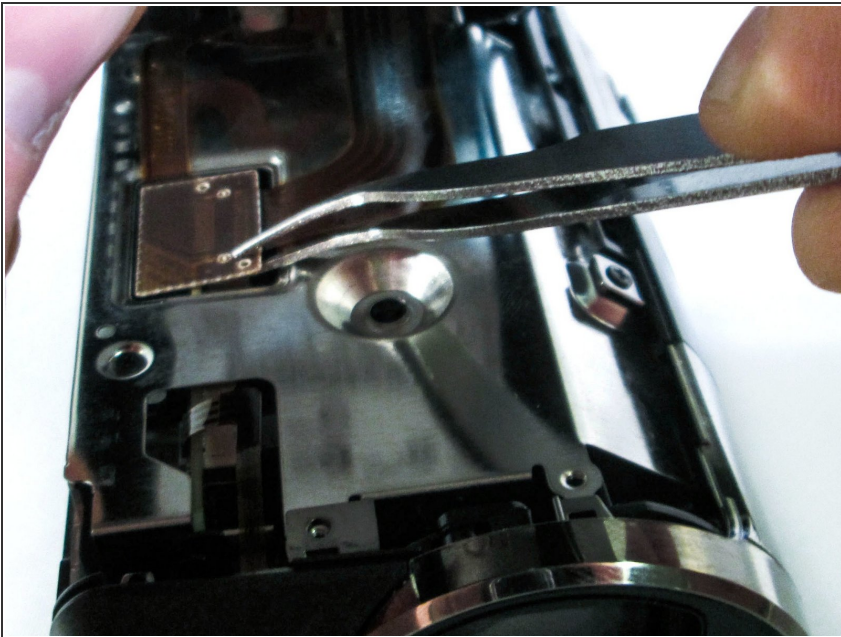
## Step 5 — Detach Casing from Body



- Pull the casing under the hand strap directly outward until casing detaches from camcorder

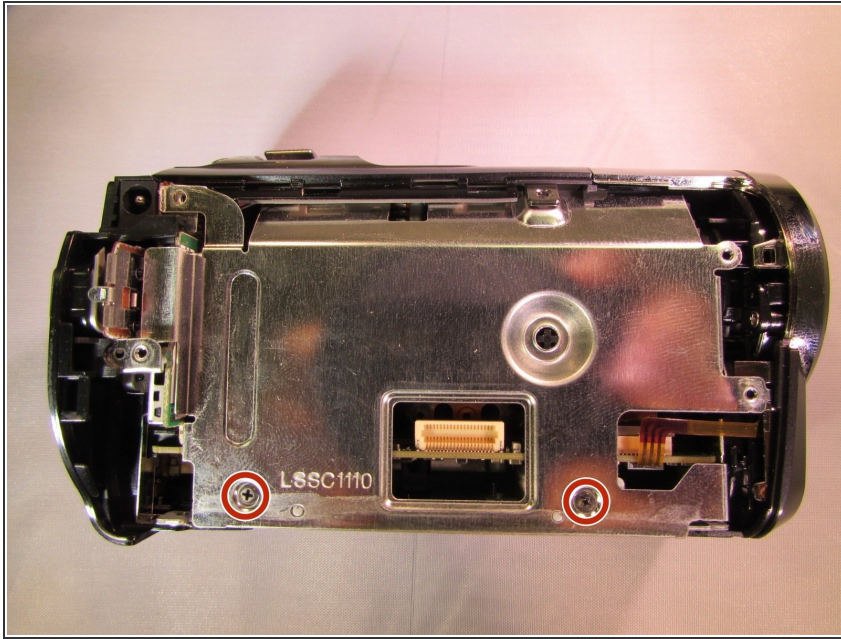
 Detach gently so the ribbon cable is not damaged!

## Step 6 — Detach Ribbon Cable from Body



- Use tweezers to grab the ribbon cable at the connection point and slowly lift up until the connection is separated.
- ⓘ This point connects the HDD to the motherboard.

## Step 7 — Rear Cover



- Unscrew the two black 4 mm screws from metal casing around the motherboard.

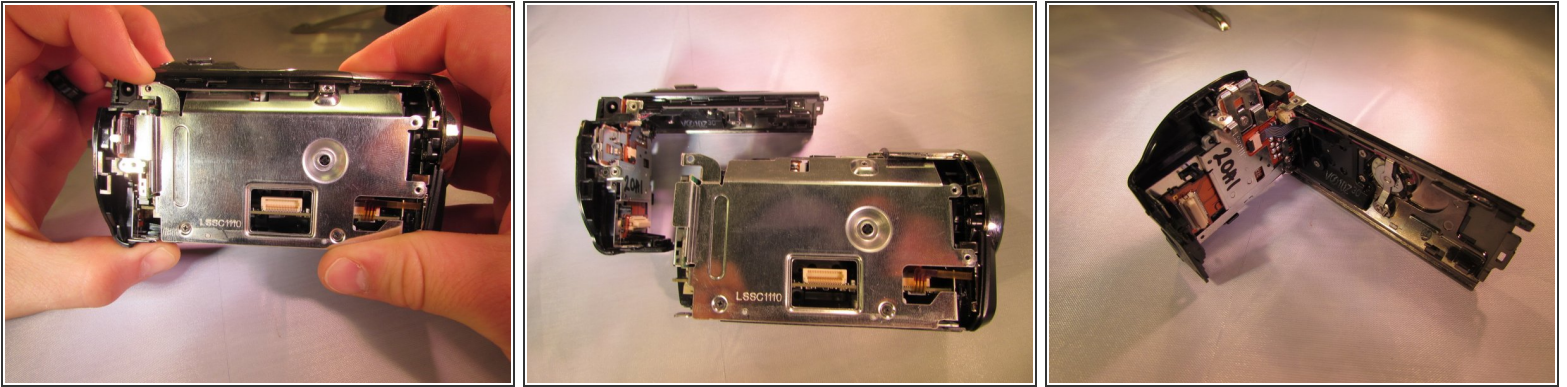
## Step 8



- Remove the black 4 mm screw from the back of the camcorder underneath where the battery would have been.

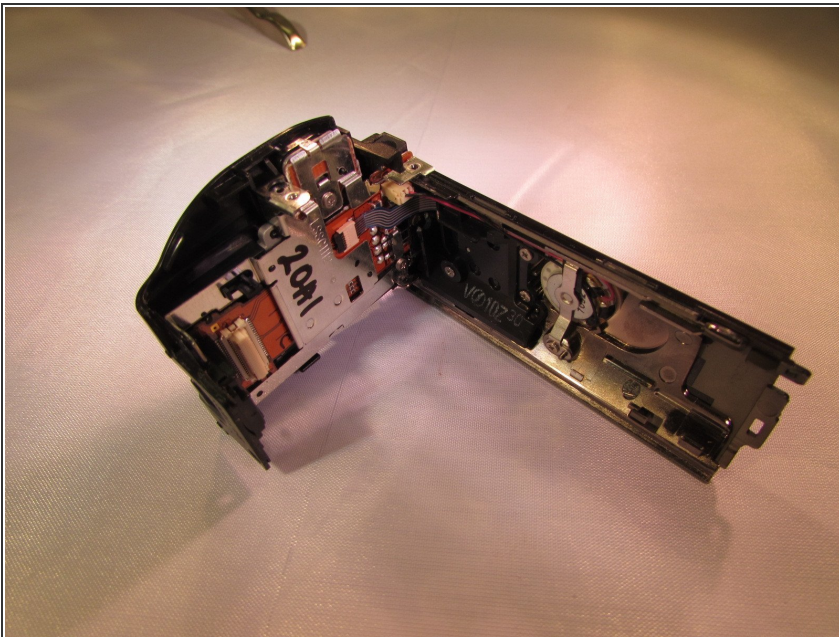


## Step 9



- Pull the plastic cover on the back out and up slightly until the back feels like it's free, then pull back on the plastic (The top cover piece and back will be detached).

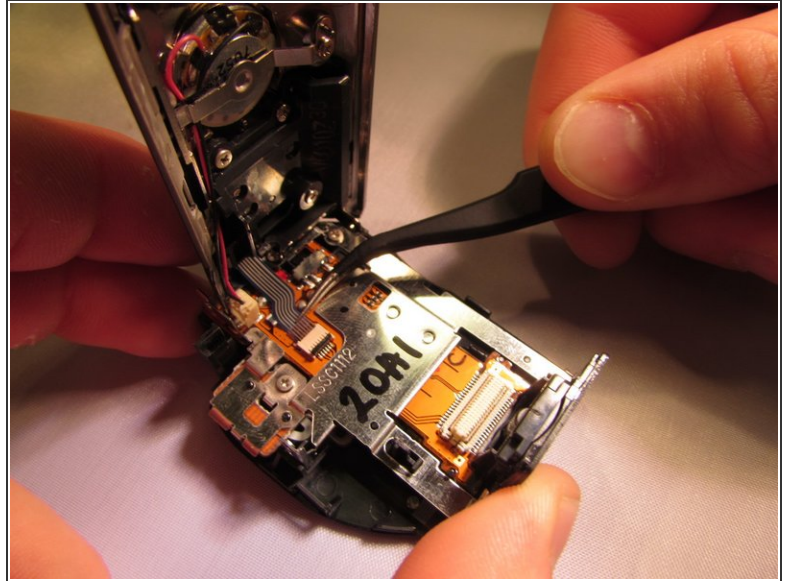
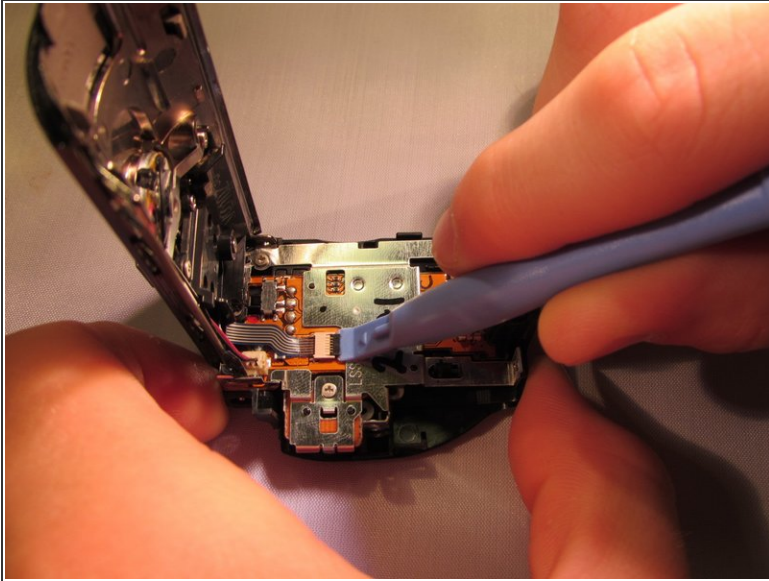
## Step 10 — Zoom Lever



- Grab the plastic piece that covered the back of the camcorder.

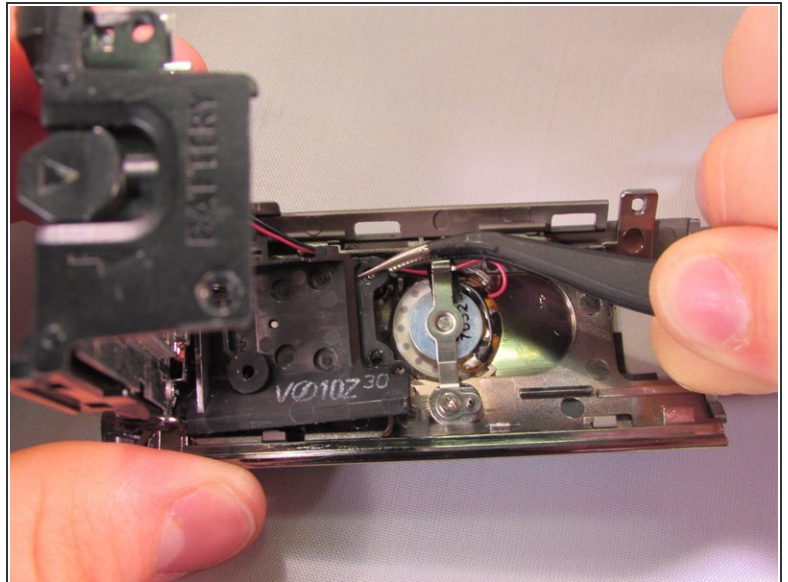
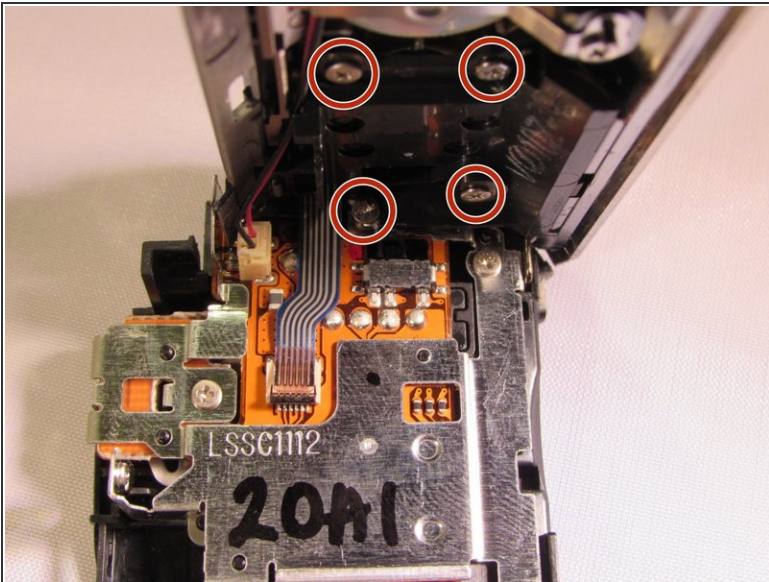


## Step 11



- Unlock the copper ribbon cable using the blue pry tool then gently detach the ribbon cable using the tweezers.

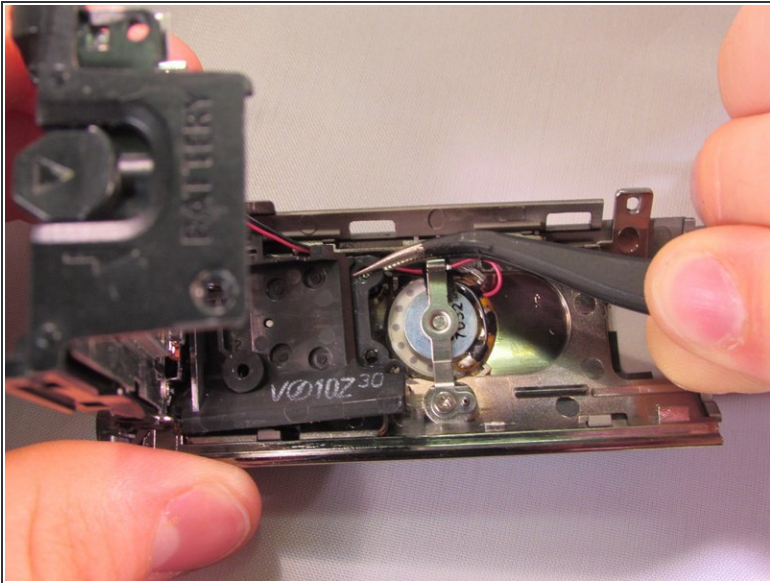
## Step 12



- Unscrew the four silver 4 mm screws underneath the plastic outer cover to gain access to the bottom of the zoom lever.



## Step 13



- Pull on the black piece that is connected to the under part of the zoom lever using the tweezers while you push the back piece into an angle. BE CAREFUL not to disconnect the red and black wires (The zoom lever is ready to be replaced.)

To reassemble your device, follow these instructions in reverse order.