



Panasonic Super Lite Flashlight Teardown

This guide details the teardown of the Panasonic Super Lite incandescent flashlight, for use in analyzing the device's function and replacing parts.

Written By: Colin Mitchell



INTRODUCTION

If you've ever been curious about the particulars of a simple incandescent flashlight, this is the guide for you.



TOOLS:

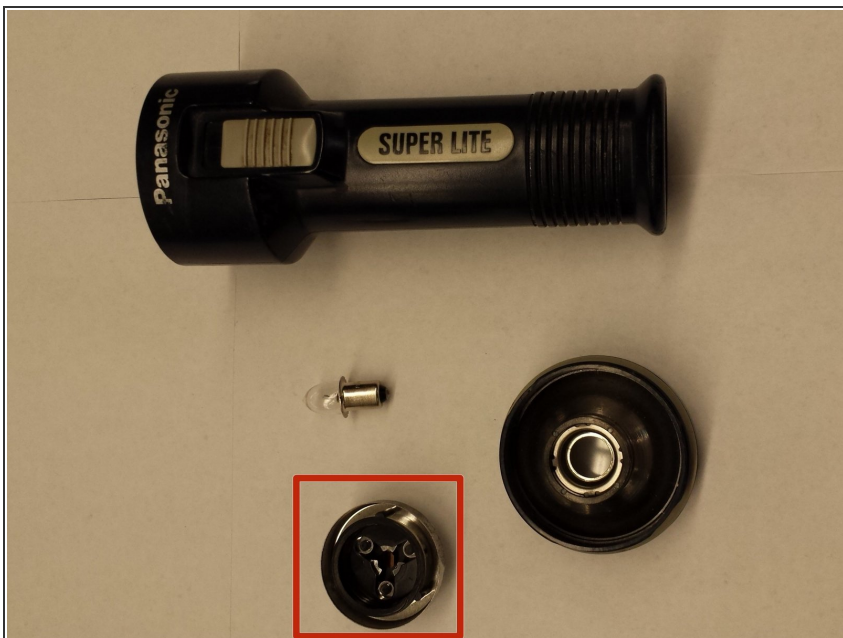
- [Flathead 3/32" or 2.5 mm Screwdriver](#) (1)
 - [Large Needle Nose Pliers](#) (1)
-

Step 1 — Panasonic Super Lite Flashlight Teardown



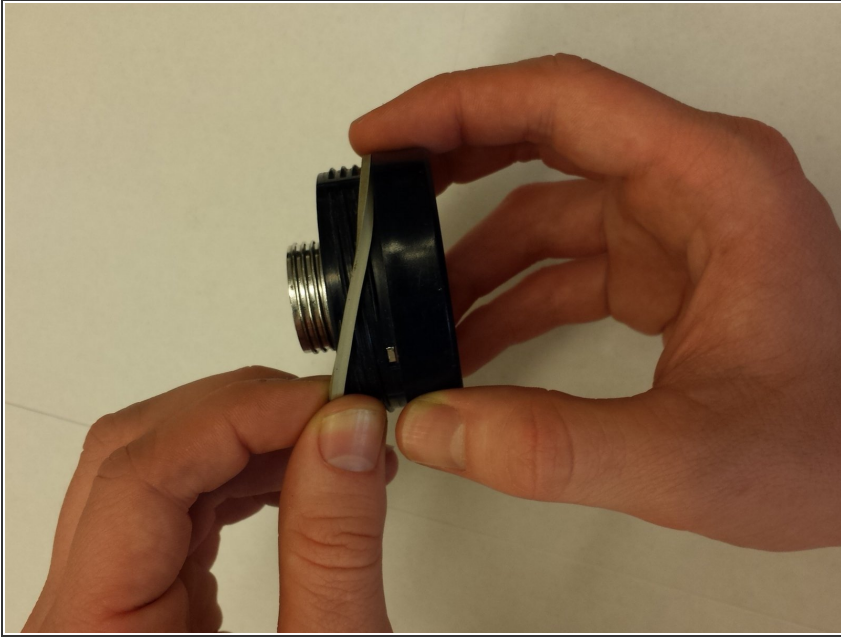
- Twist the top assembly of the flashlight off by turning it counterclockwise above the rubber gasket.

Step 2



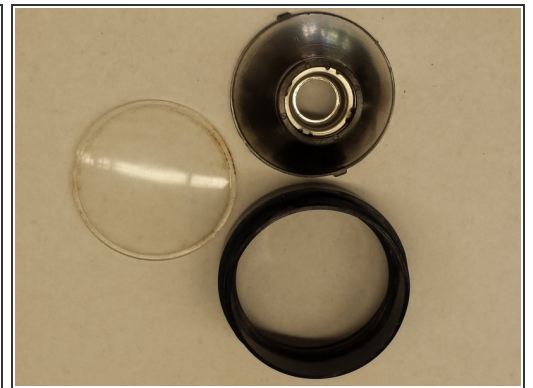
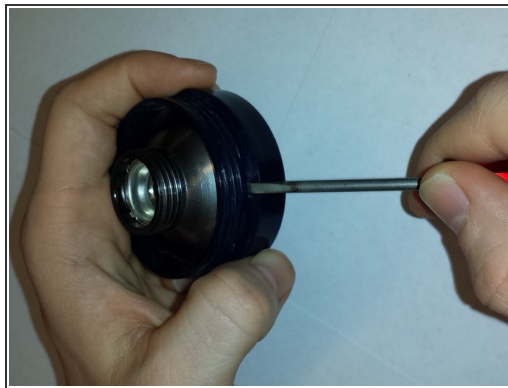
- ⚠ Orient the top assembly with the lens downward to avoid dropping the bulb during this step.
- Unscrew the bulb base by twisting counter-clockwise, taking care not to drop the bulb. Remove the bulb.

Step 3



- Remove the rubber gasket from the top assembly.

Step 4



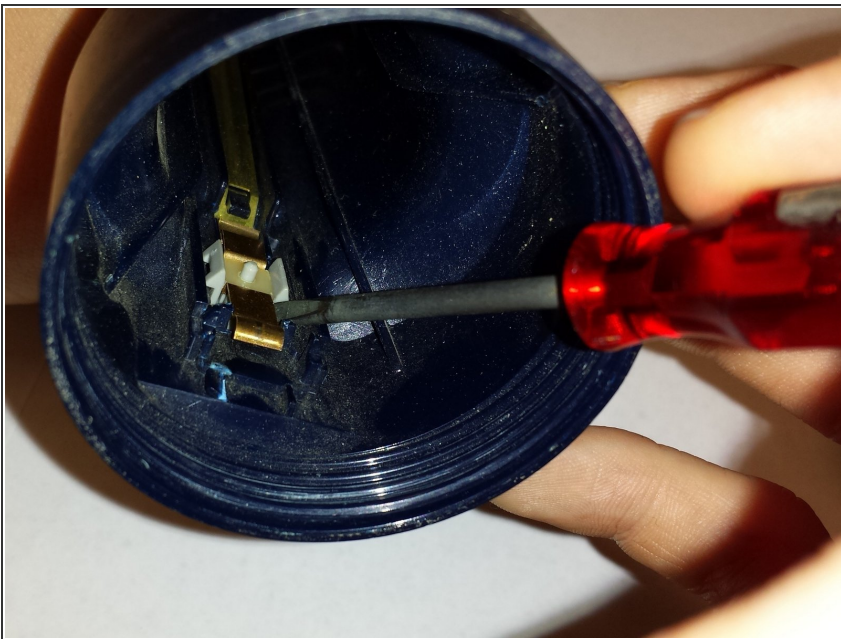
- Remove the reflector by applying pressure to one of the two protruding plastic tabs using a small flathead screwdriver while pulling on the reflector.
- The reflector should pop out; pull gently but firmly to avoid scattering the pieces. Remove the lens.

Step 5



- Remove the batteries from the flashlight body.

Step 6

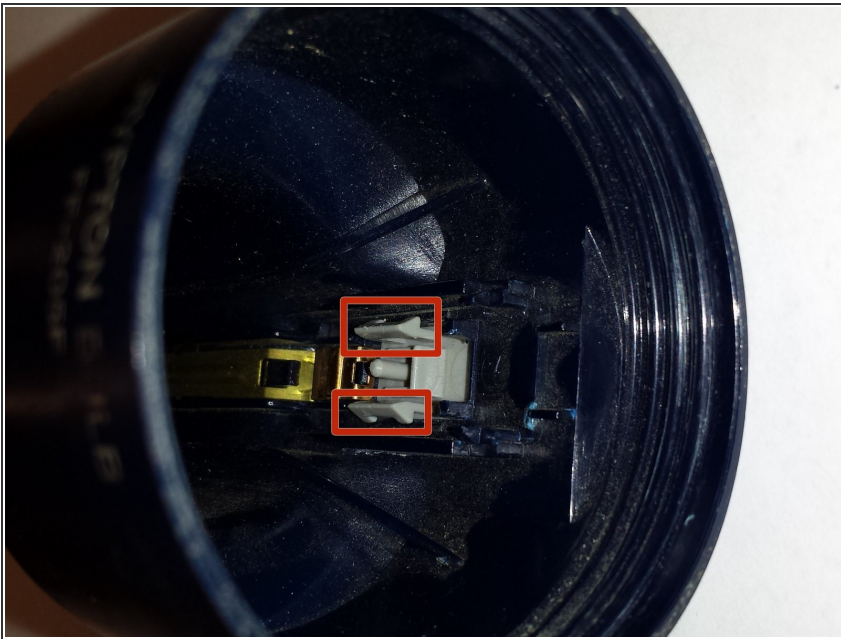


- Insert the metal screwdriver as pictured: oriented vertically, underneath the yellow plastic piece

in the switch assembly, between the metal contact of the switch and the gray plastic slider flange.

- Pry upward to remove the yellow plastic piece; the metal contact piece may pop out with the plastic piece.
- Once the metal and plastic are unseated from one side, pull out the metal contact and yellow plastic piece with pliers or fingers. Remove these pieces.

Step 7



- Use pliers to pinch the gray flanges of the switch slider and apply pressure to push the switch out of the flashlight body.