



# Panasonic Toughbook CF-29 Wireless Card Replacement

Written By: Devon Augustus



# INTRODUCTION

This guide will show you how to remove the wireless card from a Panasonic Toughbook CF-29



## TOOLS:

- [Phillips #1 Screwdriver](#) (1)
  - [iFixit Opening Tools](#) (1)
  - [Phillips #0 Screwdriver](#) (1)
-

## Step 1 — Battery



- Locate the bay door for the battery on the left side of the laptop.

## Step 2



- Slide the latch to the right and then down to unlock it.
- Pull out the battery.



## Step 3 — Back Cover



- Begin by turning the laptop upside down with the handle towards you.
- Use a Phillips size 0 screwdriver to remove the 4 screws holding down the ram cover.

## Step 4



- Remove the panel and set it aside.
- Use a Phillips size 0 screwdriver to remove these 8 small screws.

## Step 5



- Use a Phillips size 1 screwdriver to remove the remaining 8 screws.

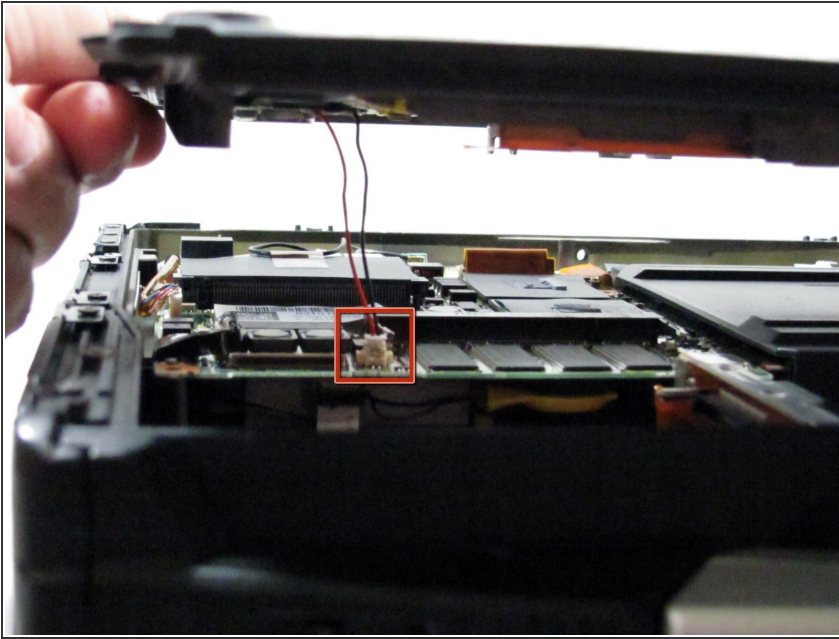
## Step 6



- Use a plastic opening tool to release, but NOT remove, the back cover because it is sealed with adhesive.



## Step 7



- ⚠ Be careful when lifting the cover as you may damage some connections.
- Slowly lift the cover so that you can disconnect the red and white wires connecting the speaker to the sound card.

## Step 8



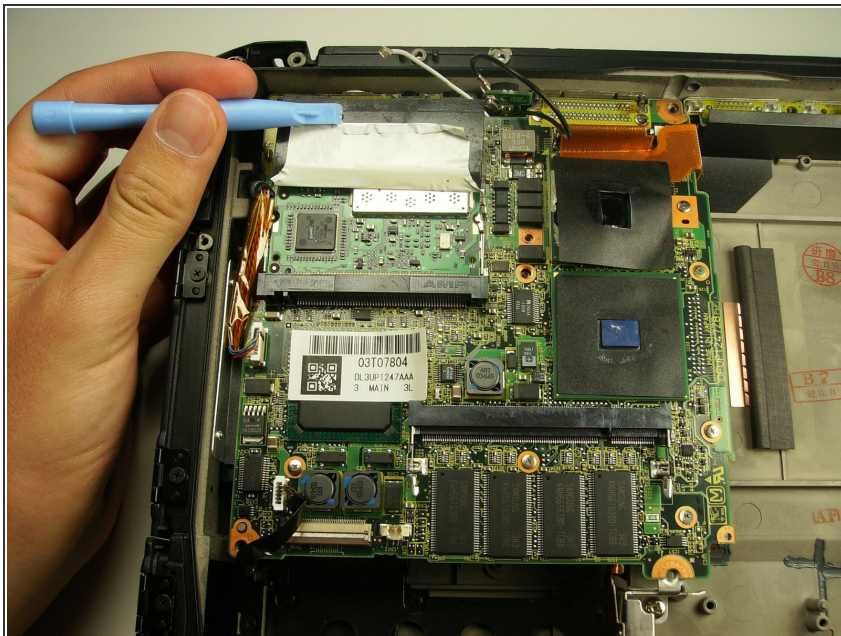
- Now the back cover should be off and you can access the inside of the casing.

## Step 9 — Wireless Card



- Remove the black and white wires attached to the wireless card by simply pulling up.

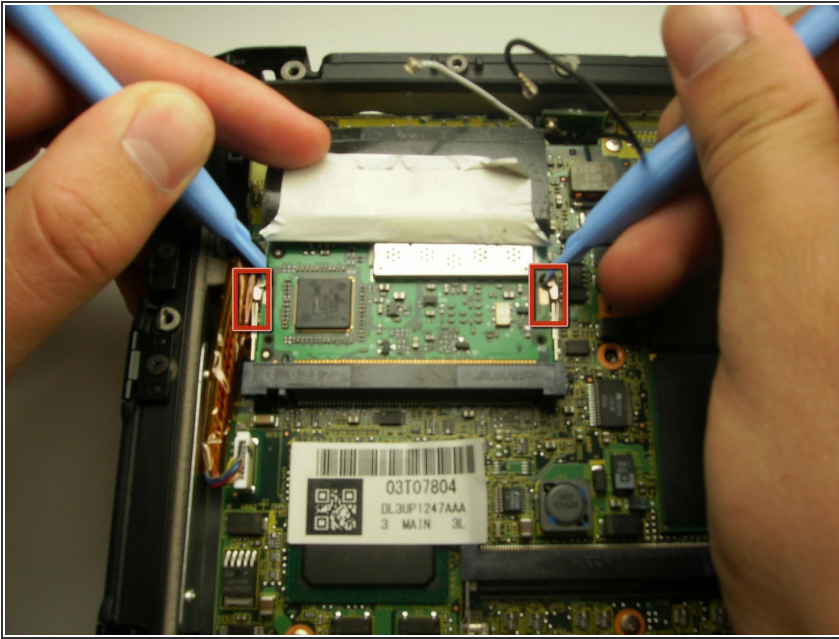
## Step 10



- Peel back the black cover to expose the clips holding in the wireless card.



## Step 11



- Using a pair of plastic opening tools, push the two metal tabs away from the card.

## Step 12



- The wireless card should now easily disengage from the motherboard.
- Pull the card horizontally away from you to remove it from its housing.



To reassemble your device, follow these instructions in reverse order.