



Panasonic VDR-D220 DVD Camera Front lens Element Replacement

This guide will show you how to replace the camera lens if it has been damaged or become scratched over time.

Written By: Brandon Gregoire



INTRODUCTION

Dropped your camera, or forgot to put the lens cover back on then your lens is damaged. Any scratches or chips in a lens will alter your most valuable moments and leave you with an imperfect image. This guide will show you how to restore the quality of camera you deserve.



TOOLS:

- [Phillips #0 Screwdriver](#) (1)
- [Spudger](#) (1)



PARTS:

- <https://www.ebay.com/itm/Telephoto-Lens-for-Panasonic-SDR-S26R-SDR-S26P-SDR-S26PC-VDR-D210-VDR-D220/281571728912?hash=item418efb9e10:g:ctQAAOSw1ZBUwBzg> (1)

Step 1 — Camera lens



- Remove one 5mm screw on the bottom side of the camera with a Phillips #0 screwdriver.

Step 2



- Open the side port door.

Step 3



- Remove one 5mm screw inside the side port with your Phillips #0 screwdriver.

Step 4



- Using a plastic spudger, pry to disconnect the top-front part of the camera.
- Slide the top portion of the camera forward revealing a ribbon cable.

Step 5



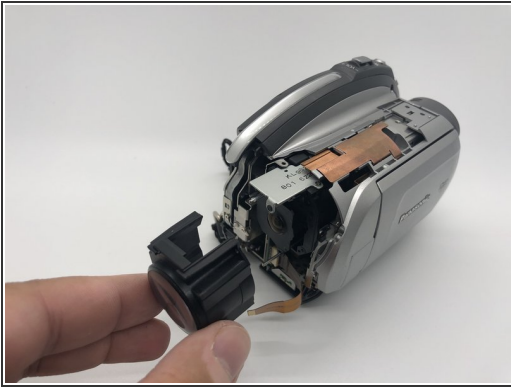
- Flip the camera on the right side.
- Gently pull the front part from the main body to reveal the cables connecting them.
- ⚠ Do not pull too hard because of the ZIF connector cable.
- Use your plastic opening tool to disconnect the connection point safely.
- Press the tab with a plastic opening tool and then pull the ZIF connector to detach.

Step 6



- Look at the camera from the front side.
- Remove four 5mm screws using a Phillips #0 screwdriver.
- ⓘ There are two 5mm screws on each side of the lens, for a total of four screws.

Step 7



- Pull the front element lens gently away from the camera.
- ⓘ In some cases the lens need not be replaced completely. Sometimes cleaning the lens with a microfiber cloth and isopropyl alcohol will alleviate blurry video issues.

To reassemble your device, follow these instructions in reverse order.