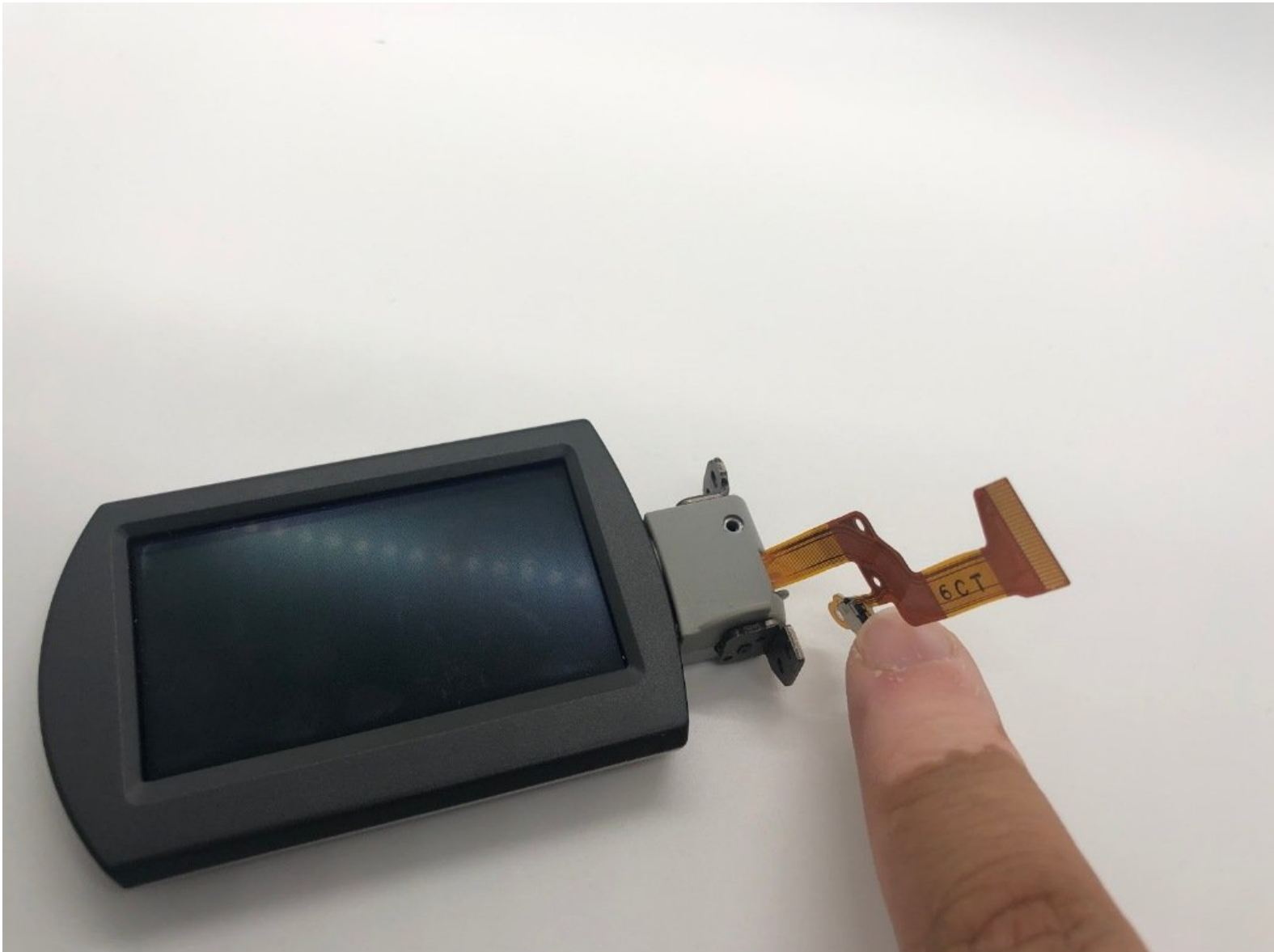




# Panasonic VDR-D220 DVD LCD Replacement

Replacement of the LCD display for a Panasonic DVD camera.

Written By: Brandon Gregoire





## TOOLS:

- [Jimmy](#) (1)
- [Phillips #0 Screwdriver](#) (1)
- [iFixit Opening Tools](#) (1)
- [Spudger](#) (1)



## PARTS:

- <https://nl.aliexpress.com/item/32274696656.html> (1)

## Step 1 — LCD



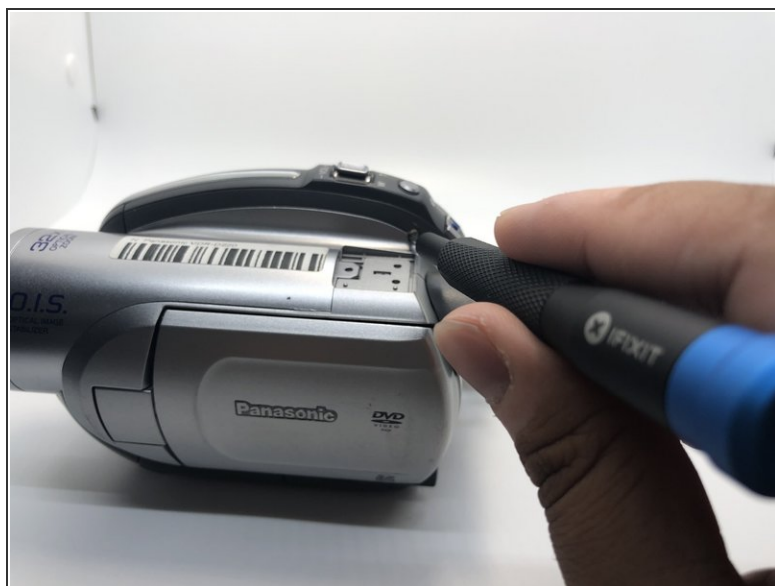
- Remove all three 5mm screws from the top of the camera using a Phillips #0 screwdriver.

## Step 2



- Rotate the camera to show the bottom side of the camera.
- Remove the four 5mm screws on the bottom side of the camera with a Phillips #0 driver.

### Step 3



- Remove one 5mm screw by using Phillips #0 screwdriver.

### Step 4



- Pry with a spudger to disconnect the top-front part of the camera from the main body.
  - Slide the top portion of the camera forward revealing more screws.
- ⚠ Be careful not to remove the two sections too far as there are still cables connecting them.



## Step 5



- Flip the camera on the right side.
  - Gently pull the front part from the main body to expose the cables connecting them.
- ⚠ Do not pull too hard because of the ZIF connector cable.
- Use your plastic opening tool to disconnect the connection point safely.
  - Press the tab with plastic opening tool and then pull the ZIF connector to detach.

## Step 6



- Flip the camera on the bottom side.
- Remove one more 5mm screw that had been uncovered previously with a Phillips #0 screwdriver.

## Step 7



- Go to the battery basement's side.
- Use your Phillips #0 screwdriver to remove the two 5mm screws on the battery base of the camera.

## Step 8



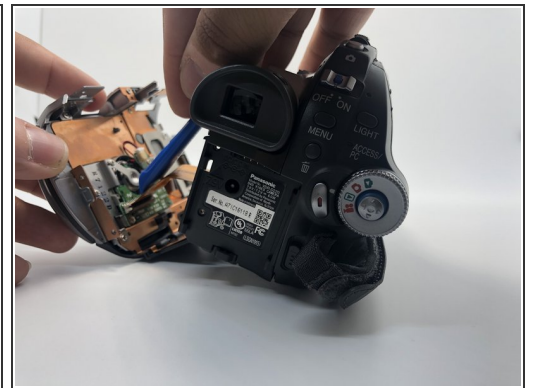
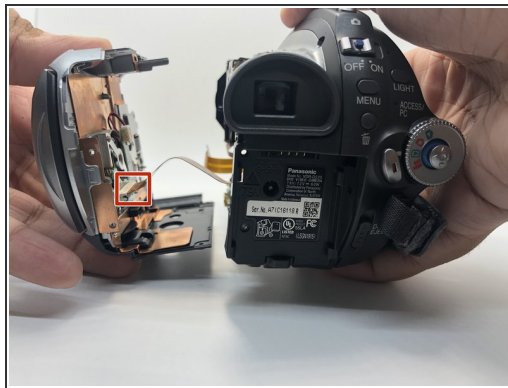
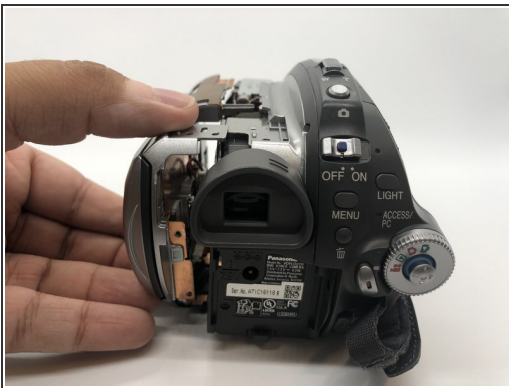
- Rotate the camera to the left side, where the side port is located.
- Open the side port door.

## Step 9



- Remove three 5mm screws inside the side ports using Phillips #0 screwdriver.
- Take off the left side of the camera.

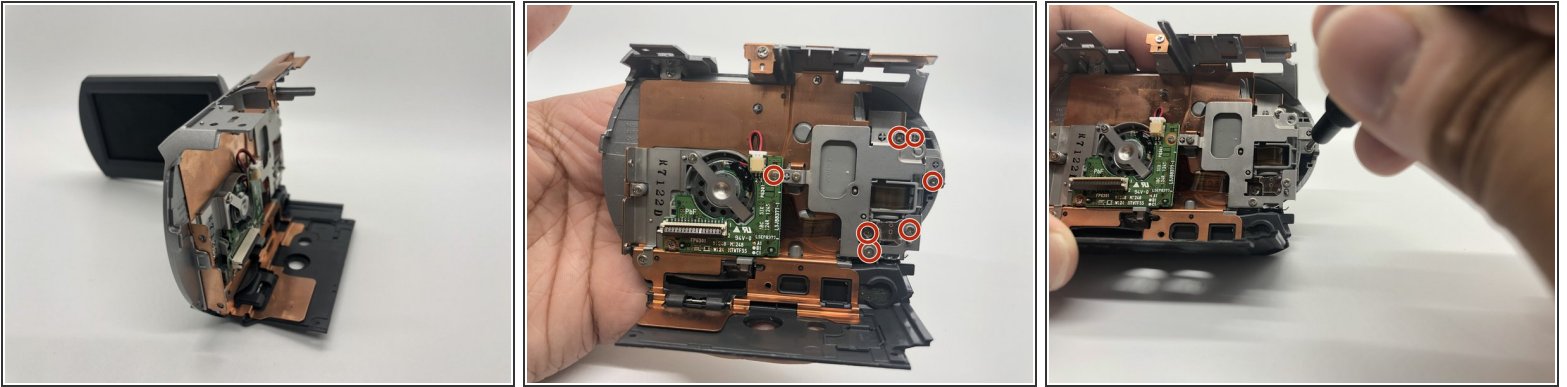
## Step 10



- Rotate the camera to the battery side.
- Gently pull the side of the camera apart with only your hands.
- ⚠ Do not pull too hard because of the ZIF connector cable.
- Disconnect the ribbon cable with your plastic opening tool, so that the left side of the camera can be removed.
- Press the tab with plastic opening tool and then pull the ZIF connector to detach.

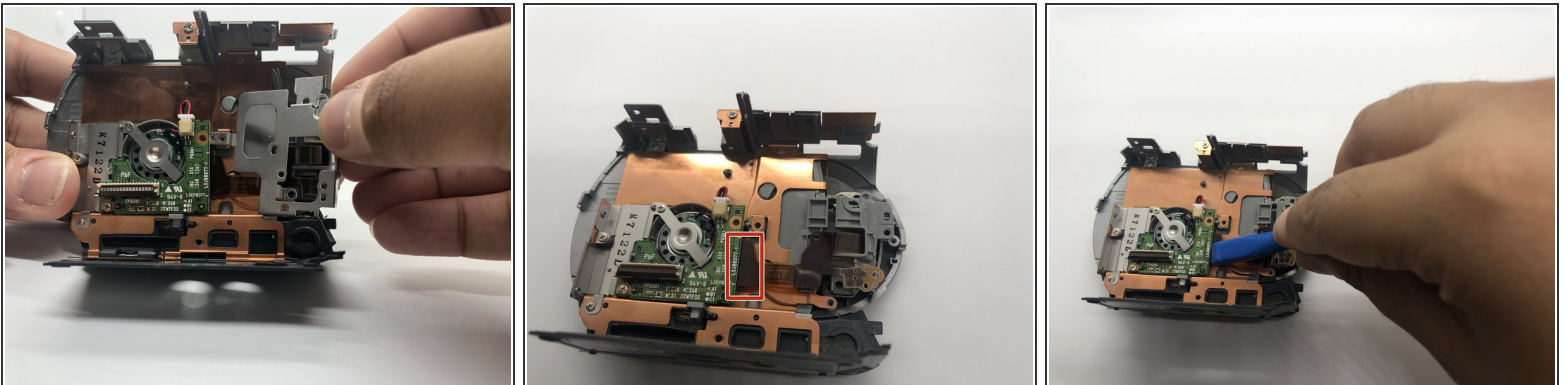


## Step 11



- Look to the left side of the camera you have removed.
- ⓘ The back side of the left side of the camera.
- Remove six 5mm screws with your Phillips #0 screwdriver.

## Step 12



- Take off the metal piece.
- Use your plastic opening tool to disconnect the ribbon cable. Press the tab with plastic opening tool and then pull the ZIF connector to detach.

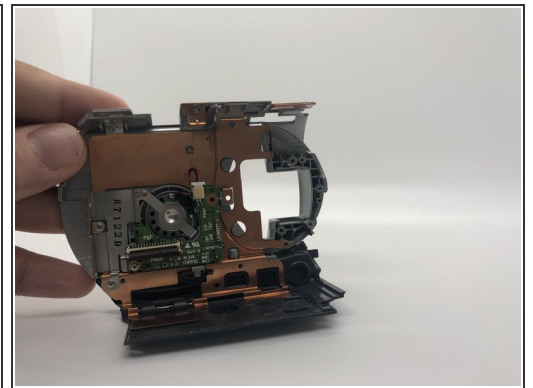
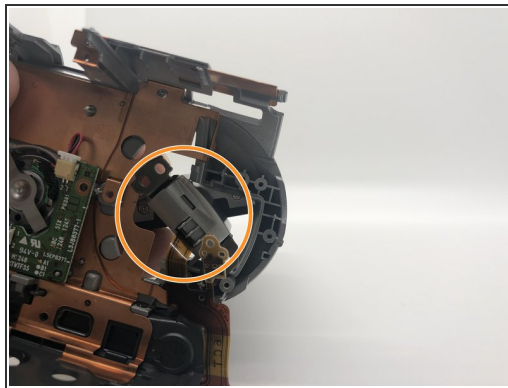
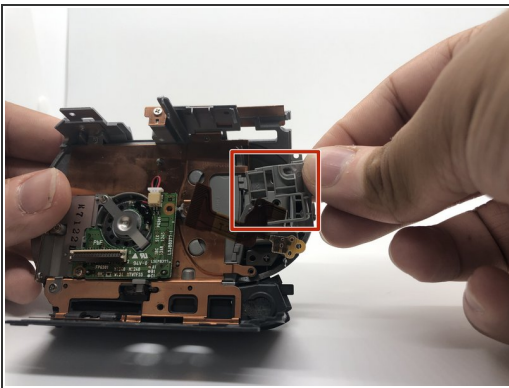


## Step 13



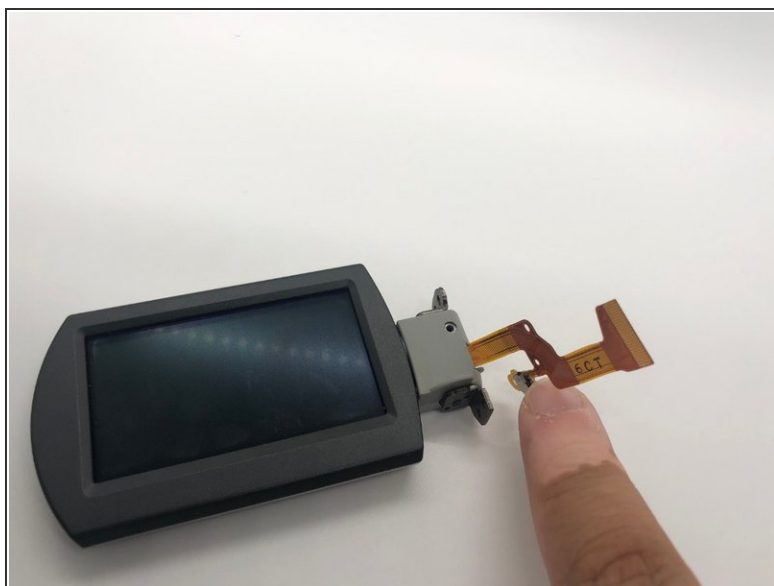
- Use a plastic spudger to apply a firm amount of pressure to pry the hinge from the rest of the camera body.

## Step 14



- Go back to the back side.
- Take off the small plastic piece.
- ⚠ Pay attention to the ribbon cable because it goes through the plastic piece.
- Rotate the right side of the LCD counter clockwise.
- ⓘ Left side of the camera after LCD is removed.

## Step 15



- LCD replacement part.

To reassemble your device, follow these instructions in reverse order.