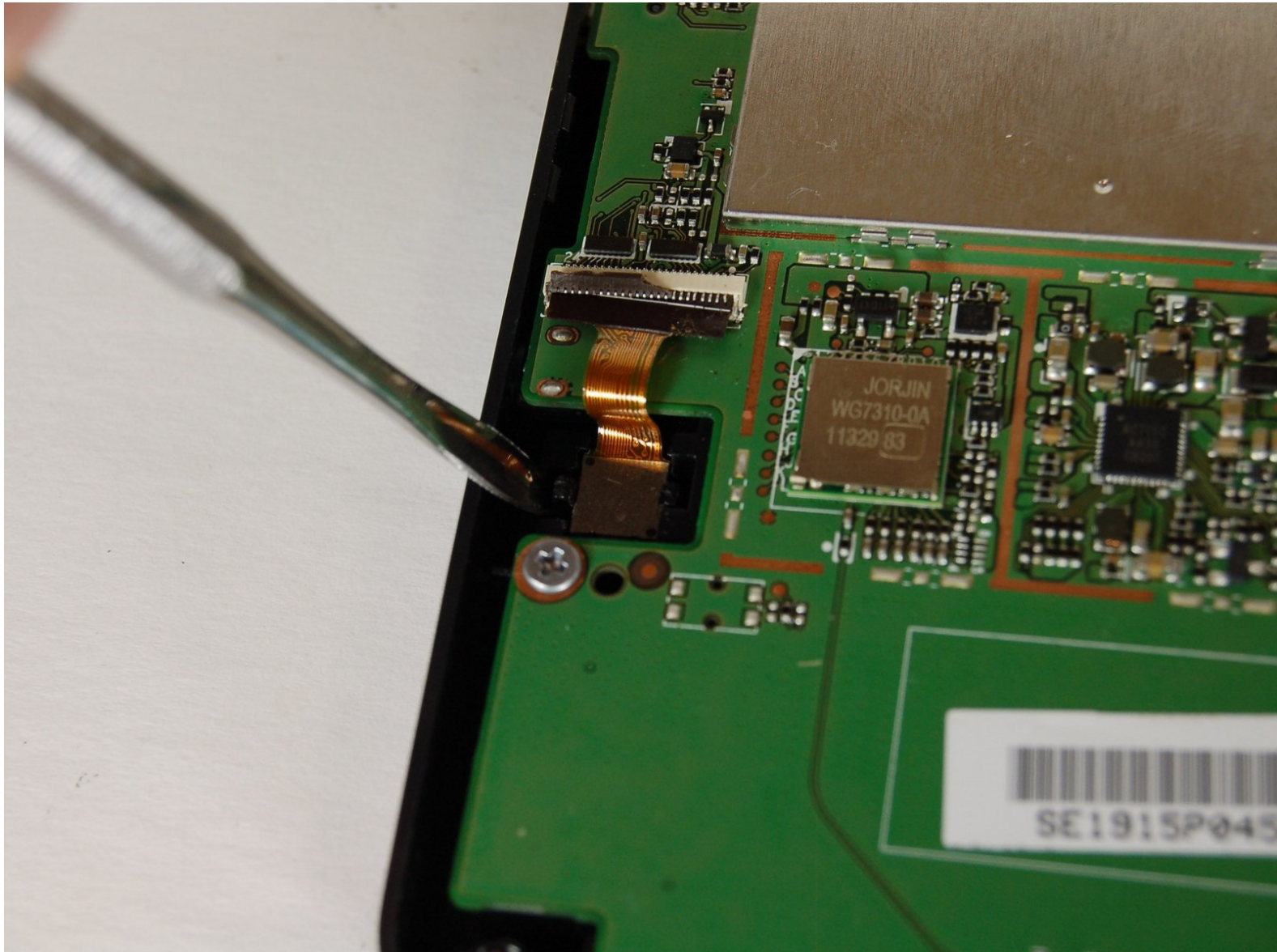




# Pandigital Super Nova Front Facing Camera Replacement

Remove the front facing camera of the Pandigital Super Nova.

Written By: sterling hanzsz



## INTRODUCTION

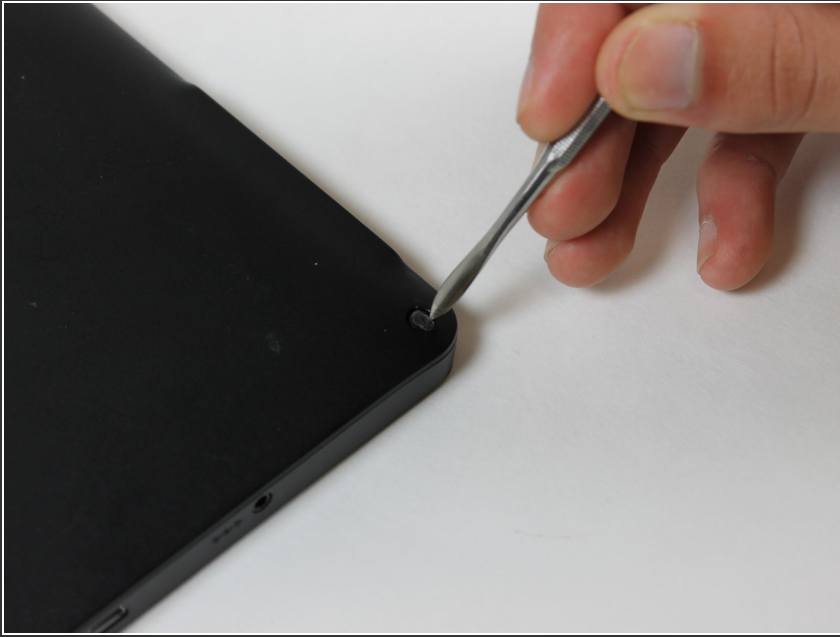
This guide demonstrates in detail how to remove and replace a Pandigital Super Nova front facing camera in order to preserve the function of the camera. See the battery replacement guide for instructions for taking off the back cover.



### TOOLS:

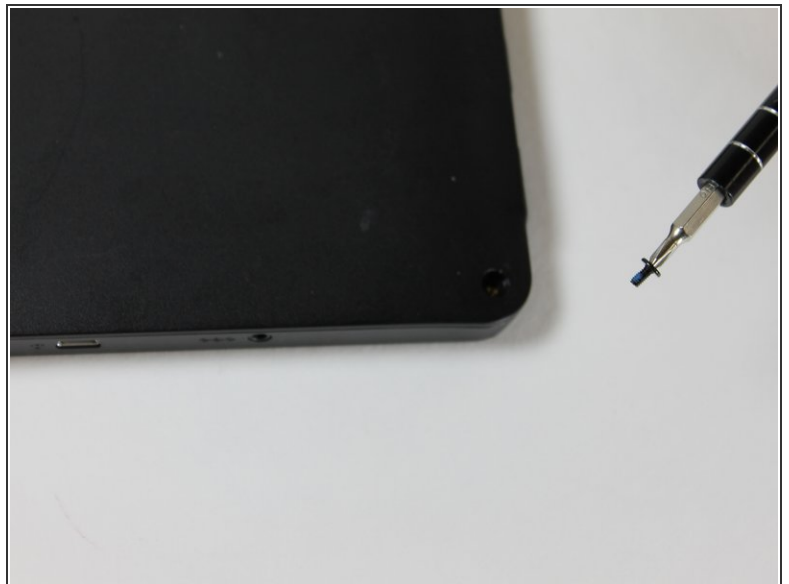
- [iFixit Opening Tools](#) (1)
  - [Metal Spudger Set](#) (1)
  - [Phillips #0 Screwdriver](#) (1)
  - [Tweezers](#) (1)
-

## Step 1 — Battery



- Remove the screw covers from each corner of the back side of the device.
- Set aside.

## Step 2



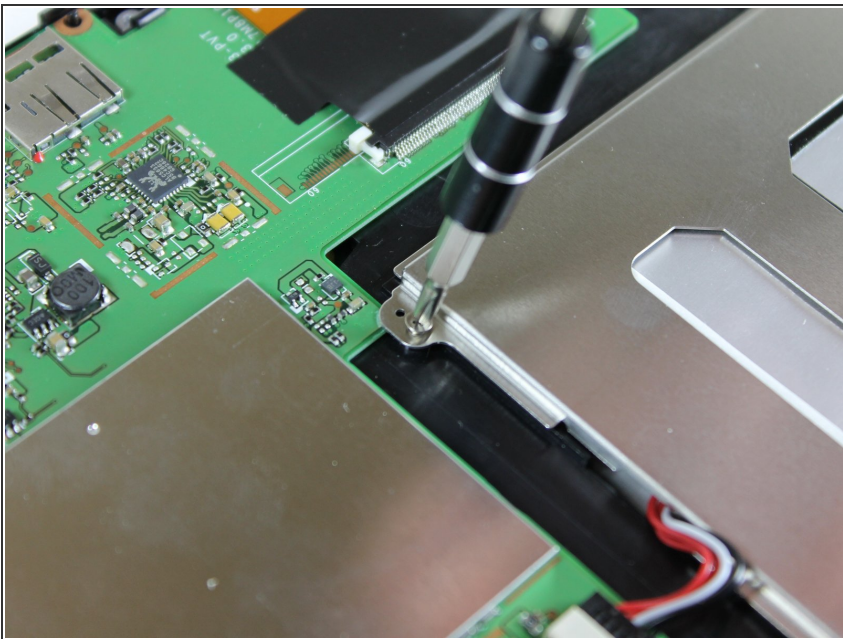
- Using a Philips screwdriver, remove all four .15 mm screws from each corner.
- Set aside.

### Step 3



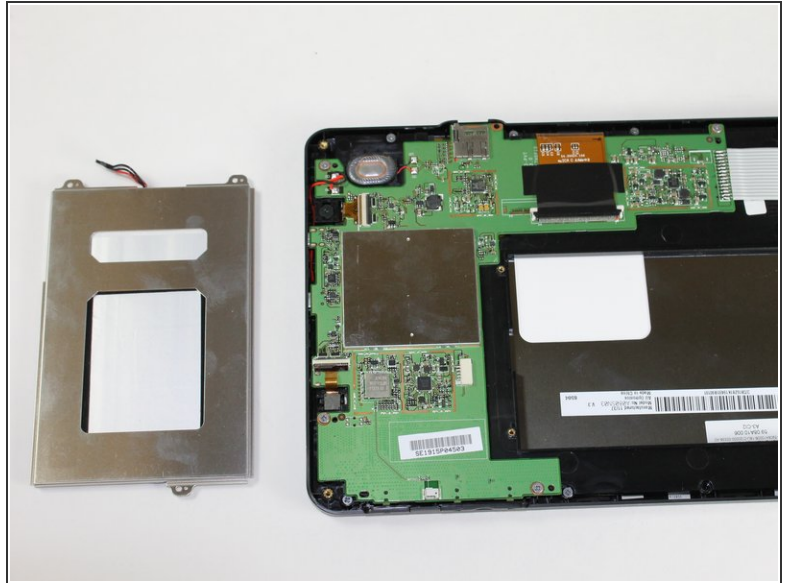
- Using the plastic opening tool, remove the back cover of the device.

### Step 4



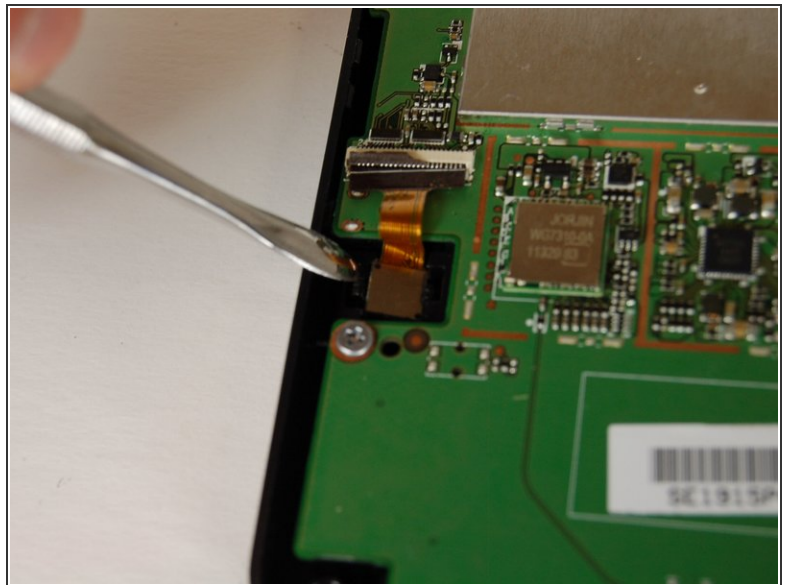
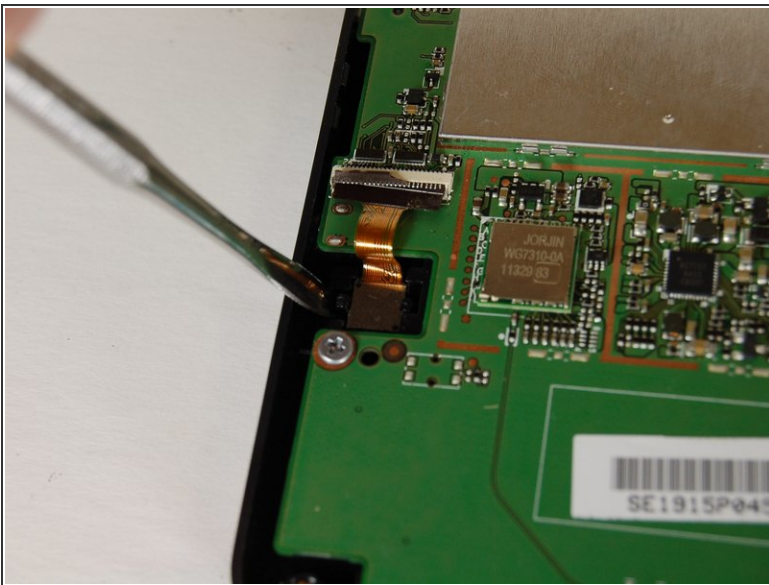
- Remove the three .11 mm screws that hold the battery in place.
- Set aside.

## Step 5



- Unplug the battery and remove from device.  
⚠ Avoid touching the motherboard as it is fragile.

## Step 6 — Front Facing Camera



- Use a metal pry tool to separate the camera and the small clip that holds it in place.  
⚠ Do **NOT** touch the MotherBoard with your bare hands. There is risk of short circuiting the device. Use nitrile gloves to prevent this.

## Step 7



- Use a pair of small tweezers to gently pull the camera connector out of the motherboard.

To reassemble your device, follow these instructions in reverse order.