



Pandigital Super Nova Screen Replacement

A guid to remove your screen if it is cracked or broken.

Written By: sterling hannsz



INTRODUCTION

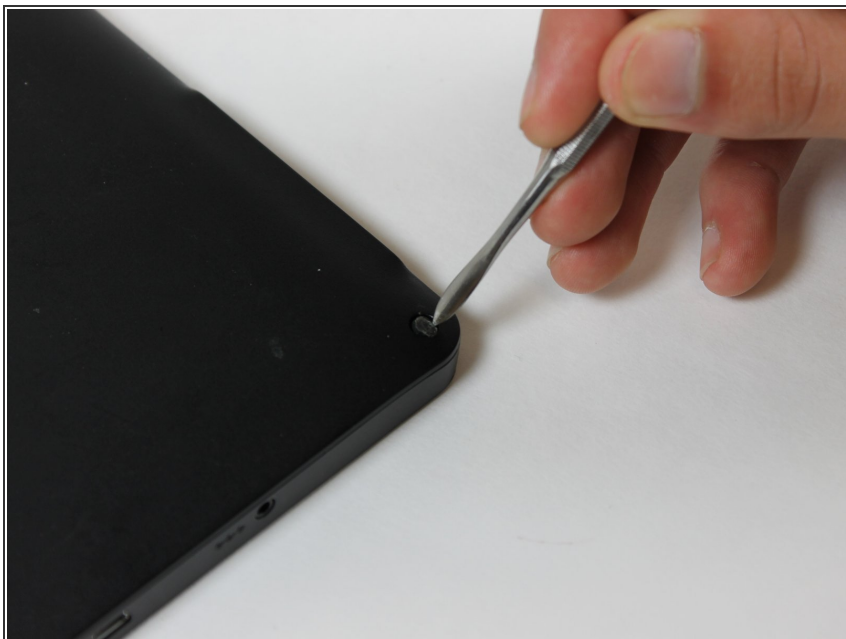
This guide demonstrates how to remove and replace a Pandigital Super Nova screen in order to preserve the function of the device.



TOOLS:

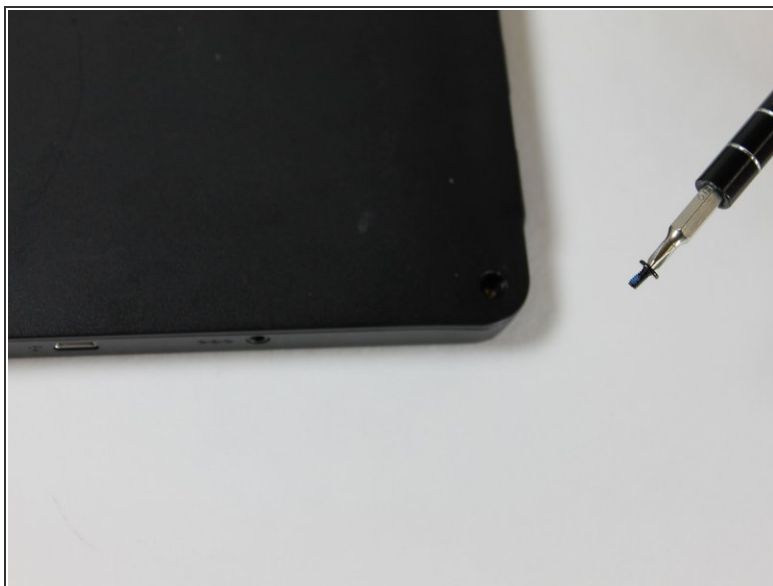
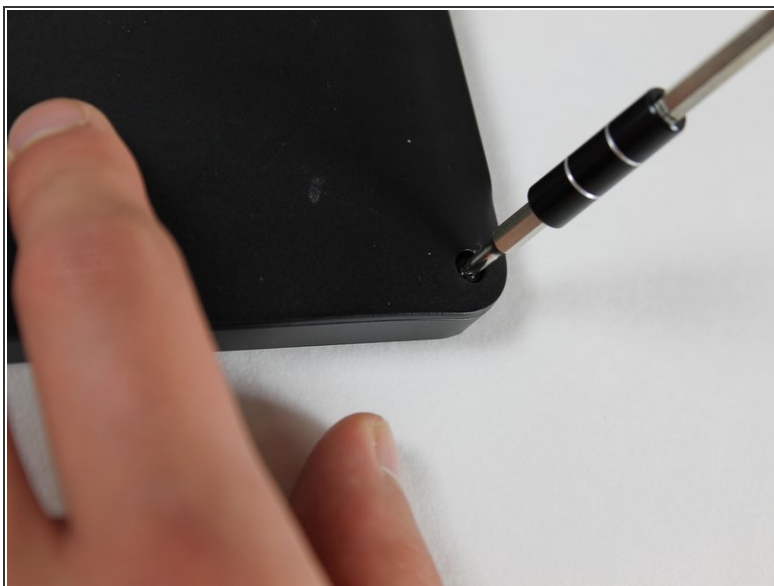
- [iFixit Opening Tools](#) (1)
 - [Phillips #0 Screwdriver](#) (1)
 - [Metal Spudger Set](#) (1)
 - [Tweezers](#) (1)
-

Step 1 — Battery



- Remove the screw covers from each corner of the back side of the device.
- Set aside.

Step 2



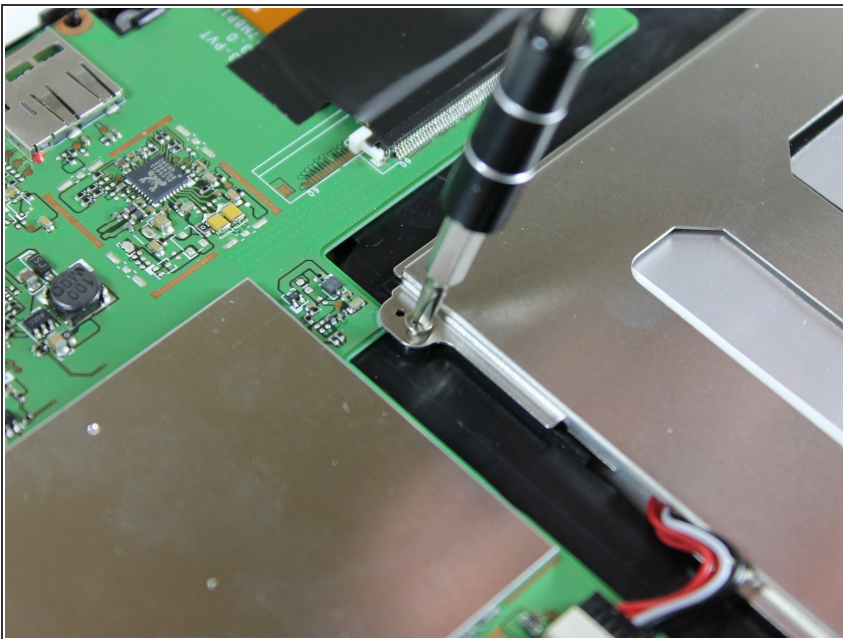
- Using a Philips screwdriver, remove all four .15 mm screws from each corner.
- Set aside.

Step 3



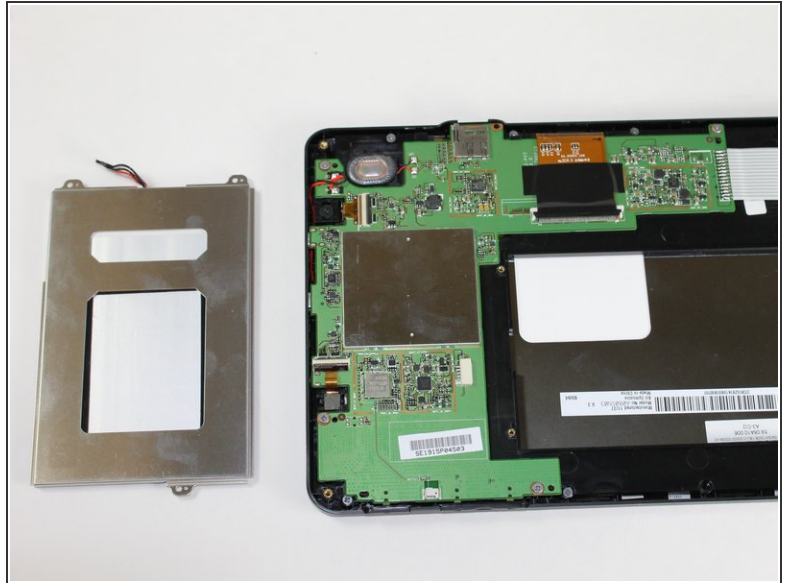
- Using the plastic opening tool, remove the back cover of the device.

Step 4



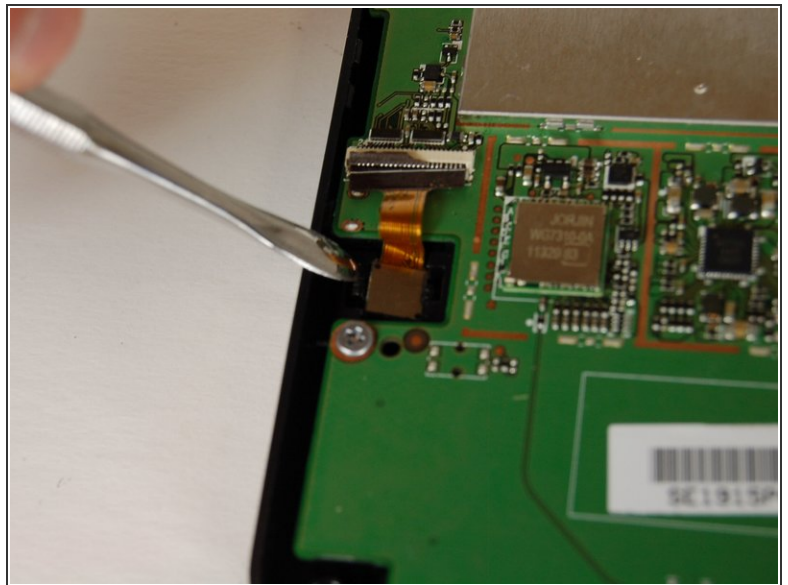
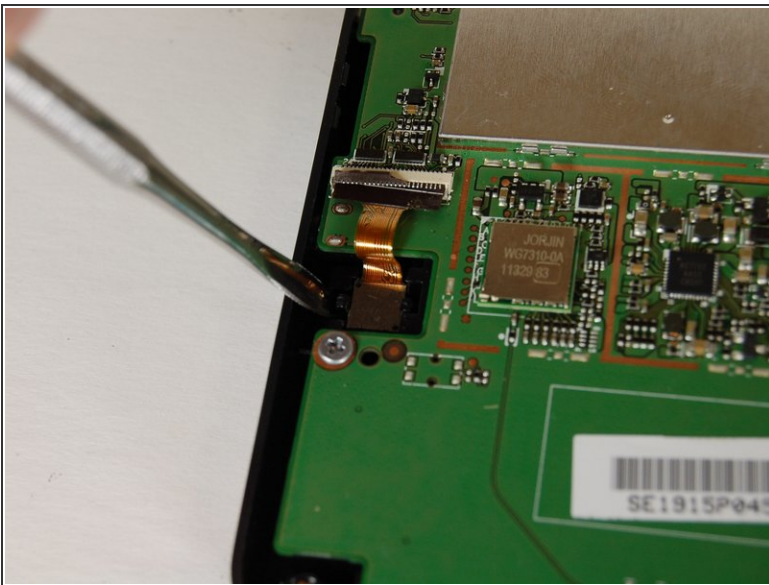
- Remove the three .11 mm screws that hold the battery in place.
- Set aside.

Step 5



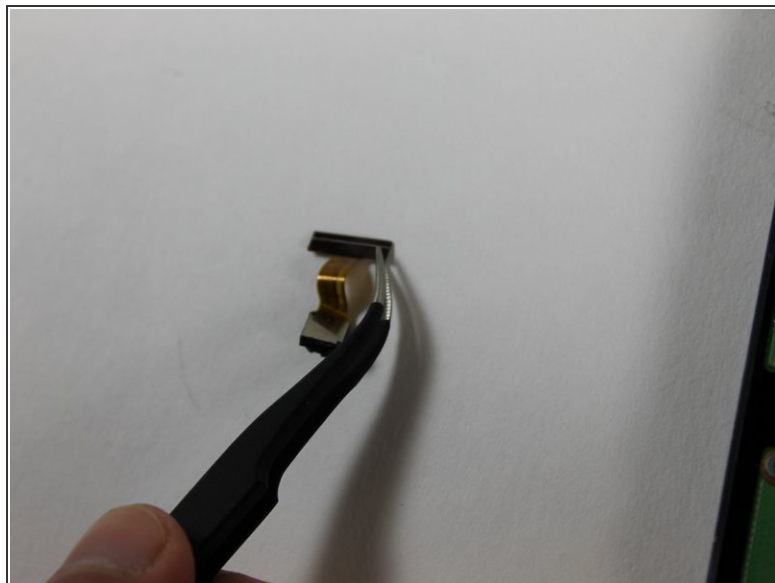
- Unplug the battery and remove from device.
- ⚠ Avoid touching the motherboard as it is fragile.

Step 6 — Front Facing Camera



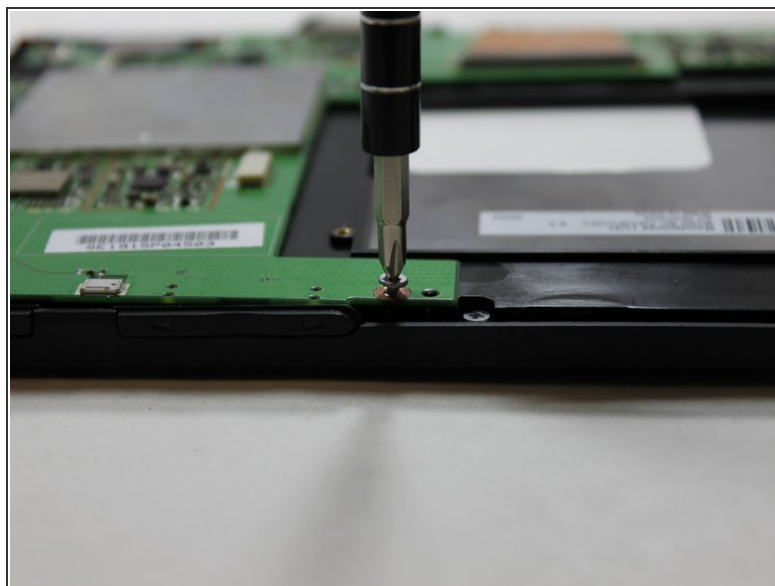
- Use a metal pry tool to separate the camera and the small clip that holds it in place.
- ⚠ Do **NOT** touch the MotherBoard with your bare hands. There is risk of short circuiting the device. Use nitrile gloves to prevent this.

Step 7



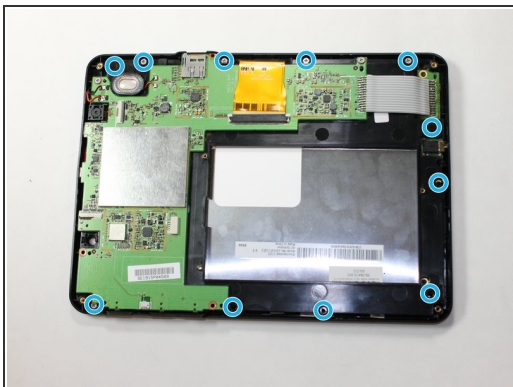
- Use a pair of small tweezers to gently pull the camera connector out of the motherboard.

Step 8 — Screen



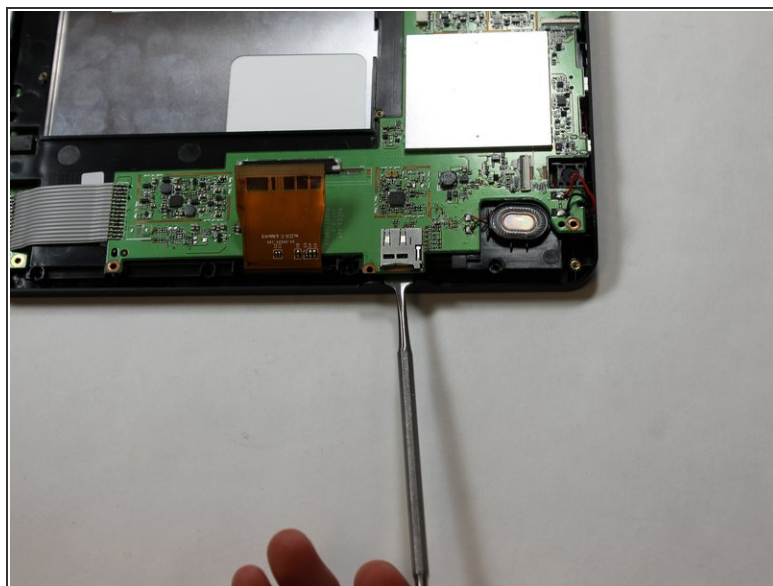
- Use a screwdriver to remove the six .15 mm screws that hold the motherboard in place. Set aside.

Step 9



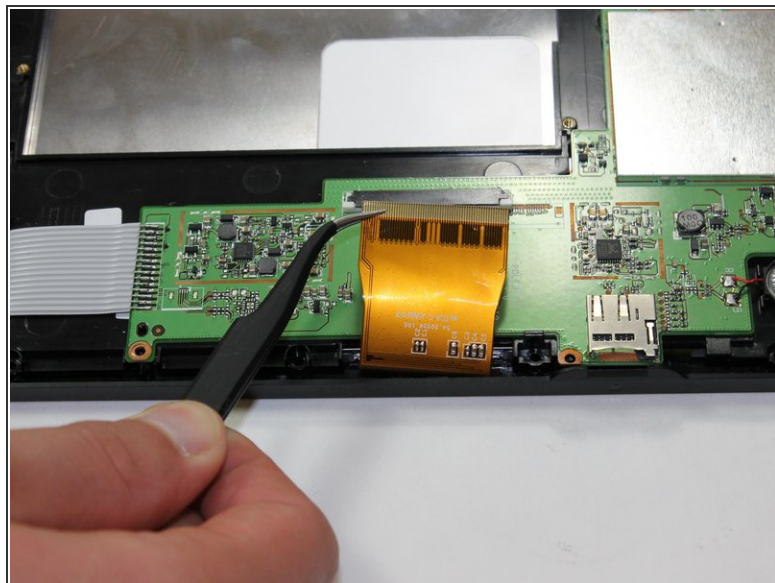
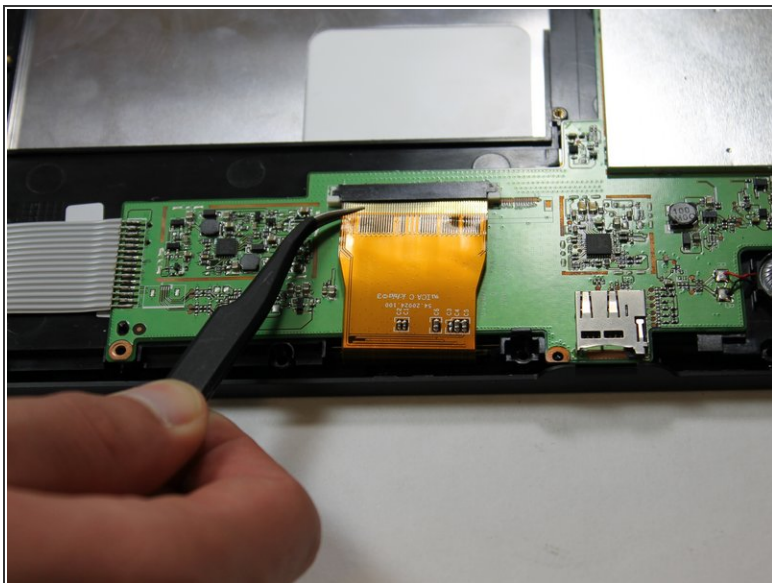
- Remove the eleven screws that hold the screen to the base. Eight are .15 mm and three are .11 mm.

Step 10



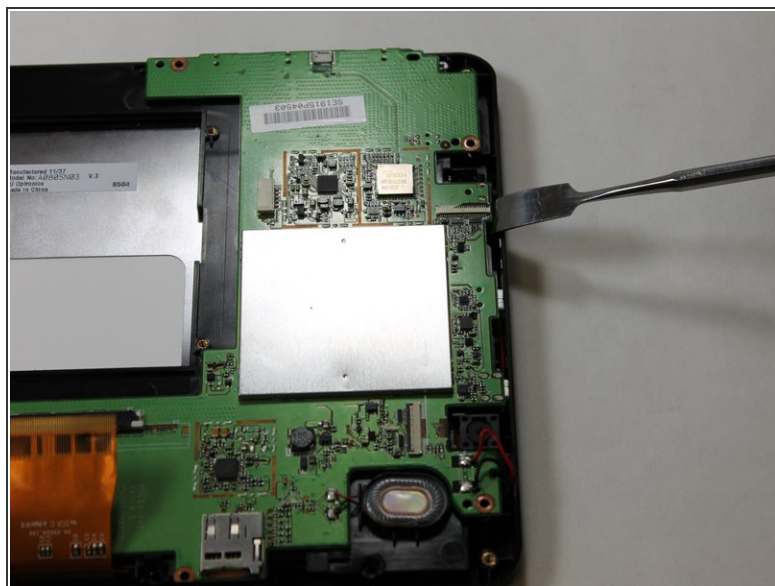
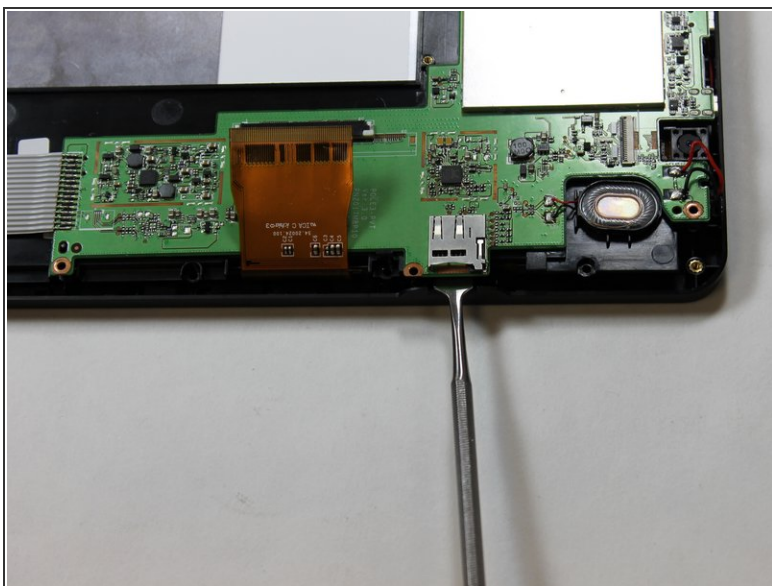
- Remove the motherboard from the tablet using a nylon spudger.
⚠ A regular black nylon spudger should be used to avoid damaging the motherboard.

Step 11



- Use tweezers to carefully remove the connector between the screen to the tablet.

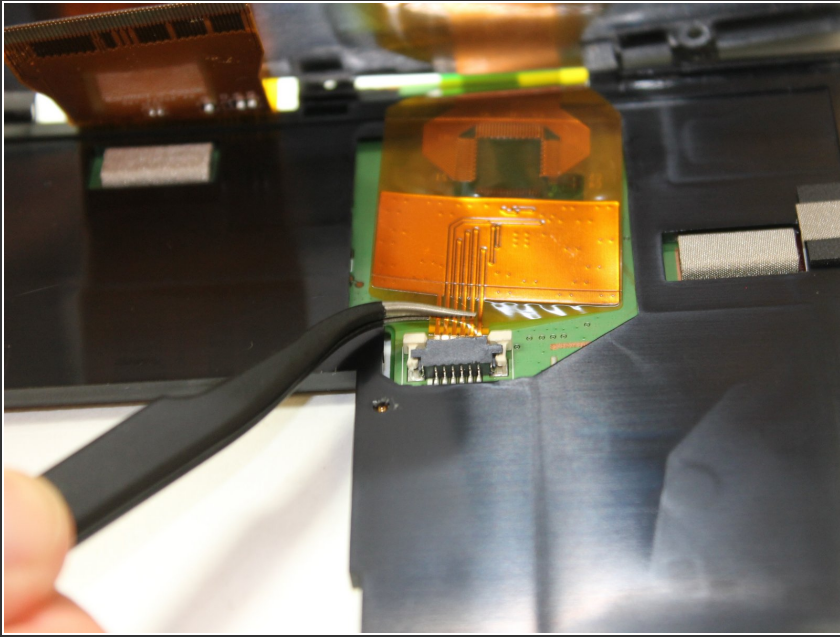
Step 12



- Use a pry tool to carefully separate the motherboard from the hard casing.

⚠ Excessive force in this step can damage your device.

Step 13



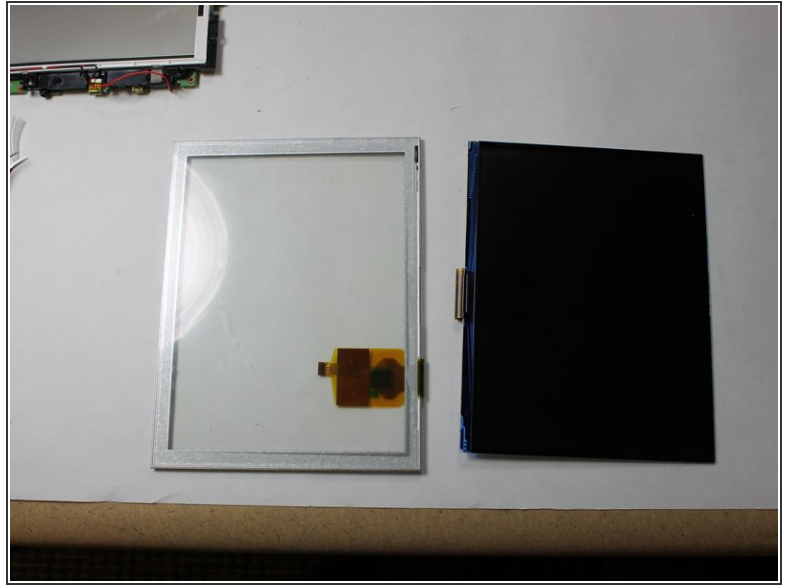
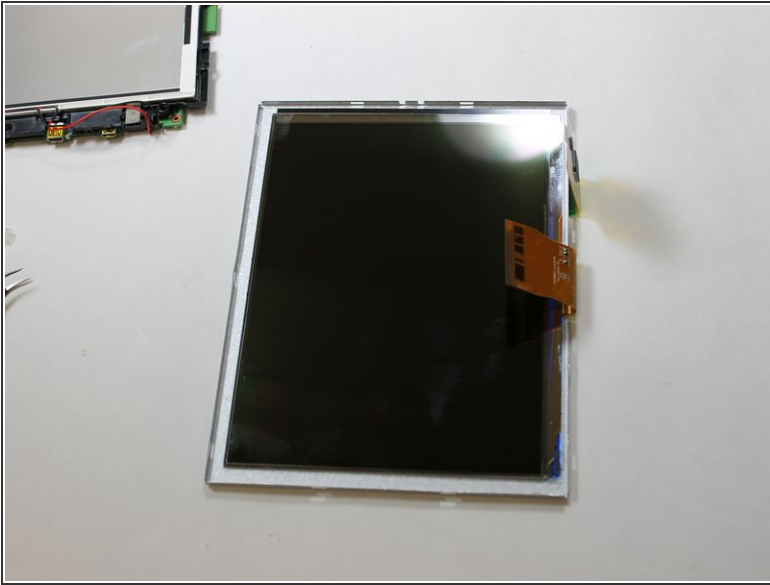
- Lift the motherboard out of the tablet.
- Remove the second connector between the screen and the motherboard.

Step 14



- Pry the silver screen box from away from the device.
- Open each of the four clips securing the screen box to open it.

Step 15



- Lift the screen out of its protective box.
- ❗ If the protective box is damaged, it will also need replacing.

To reassemble your device, follow these instructions in reverse order.