



# Panini Iron Teardown

A guide on how to dismantle a fairly standard panini iron.

Written By: Wouter Meijer



## INTRODUCTION

In this teardown guide, we will look at how to dismantle a panini iron. The iron used in this example is an anonymously produced one.

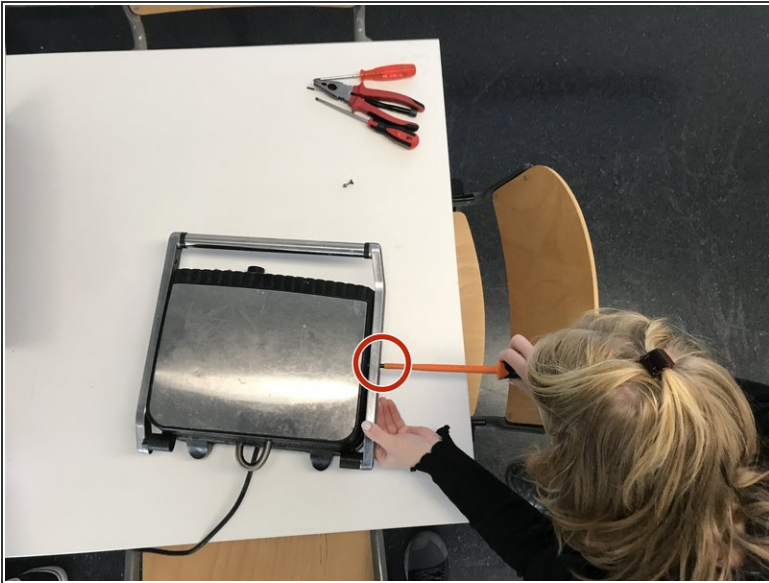
To dismantle this product not much is needed: skill nor tools. A Phillips screwdriver, a Tamper Proof Spanner, a combination plier and an iOpener will get you nearly all the way. Below is a simple step by step guide on how to take the panini iron apart.



### TOOLS:

- [Phillips #00 Screwdriver](#) (1)
  - [Tamper Proof Spanner](#) (1)
  - [Combination plier](#) (1)
  - [iOpener](#) (1)
  - [Pry Bar](#) (1)
-

## Step 1 — Side handles



- Start by taking off the handle bar with the side handles by removing the screws on the side of the product.

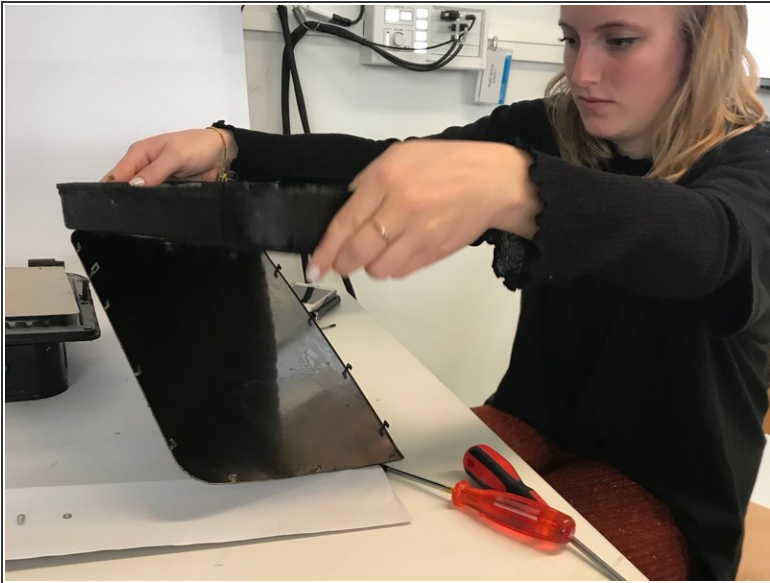
## Step 2 — Handle bar



- Next, separate the handle bar from the side bars by unscrewing the screws on the inside of the handle bar.



### Step 3 — Top cover



- Now, take the top cover off. It should come off automatically, as the screws that held the side handles also held the top off the panini iron. Then, we can take of the metal top cover, by bending the pieces of iron that keep it together.

### Step 4 — Upper heating plate



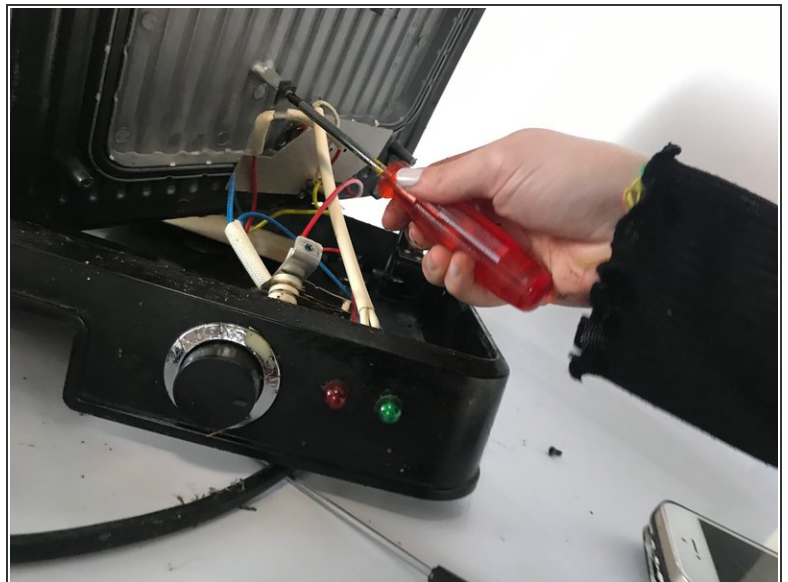
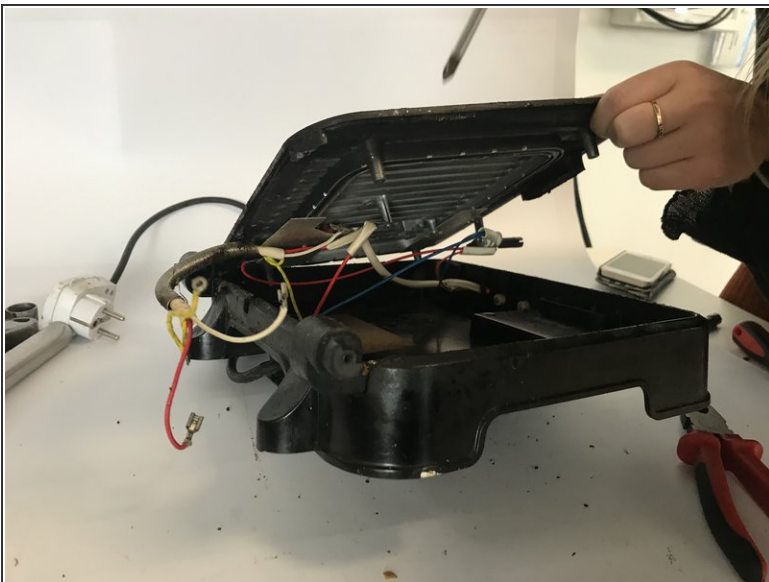
- After that, we can disconnect the wires and take the heat shield of the upper heating plate. The upper heating plate should be free now.

## Step 5 — Bottom cover



- Now that the top is entirely dismantled, we can continue with the bottom. Turn the product around and remove all the screws from the bottom cover (this is where you'll need the Tamper Proof Spanner). The cover of the electronics will fall off automatically.

## Step 6 — Lower heating plate



- Next, the lower heating plate can be unscrewed. There are some wires attached that can be seen when lifting it up from the bottom cover.

## Step 7 — Heat shields



- From the heating plate, we are now able to unscrew the heat shields.

## Step 8 — Lower heating plate



- Take the rest of the screws out of the inside of the bottom cover. This allows for the heat shield to come out.

## Step 9 — LEDs



- Now grab the iOpener and melt the glue around the wiring of the LEDs. This allows for the LEDs to come out.

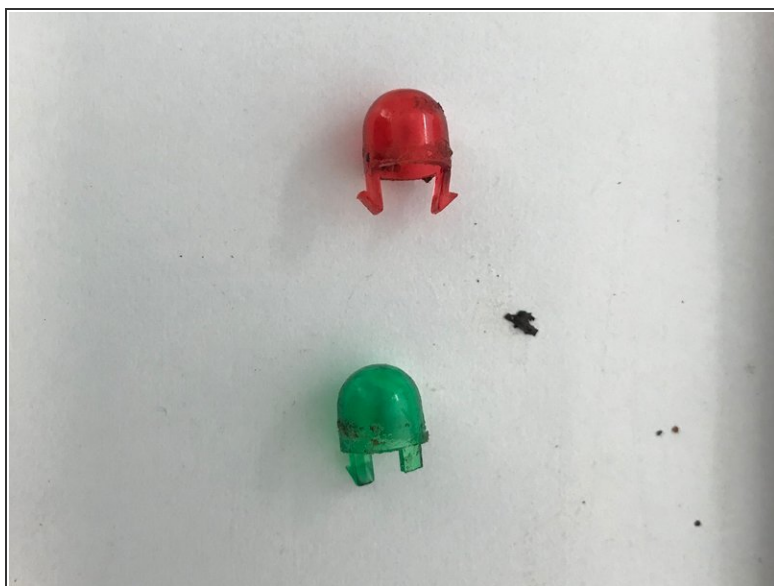
## Step 10 — Wiring



- What's left now is the wiring in the bottom and the last heat shield. The wiring can be disconnected outside of the cover. There is little plastic parts attached, that can be taken off, after which the wires can be disconnected.



## Step 11 — Buttons



- The last step is to take out the button and the covers of the neon indicator's. They are attached with snapfits, so can be pushed out.