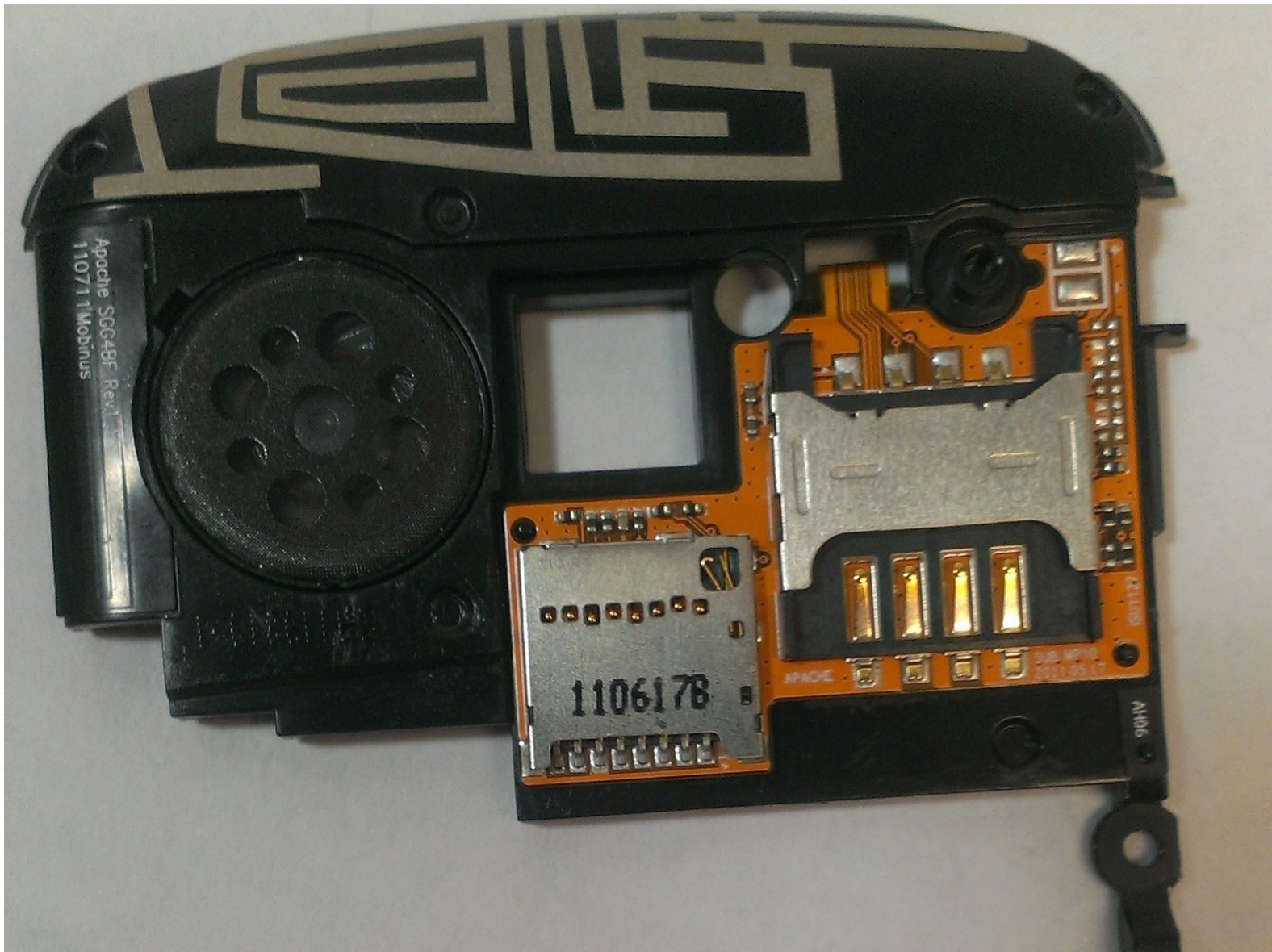




# Pantech Breakout Micro SD/SIM Card Replacement


This guide will show you how to insert or remove a Micro SD or SIM card for the Pantech Breakout.

Written By: Ryan Murphy



## Step 1 — Removing Back Cover



 Before proceeding, completely power off phone and disconnect power cords to avoid electrical shock.

- Turn phone over so that the back side is facing up.
- Using a finger, apply moderate pressure to the top of the back cover while sliding the cover down and off.
- Lift and remove the back cover from the phone.

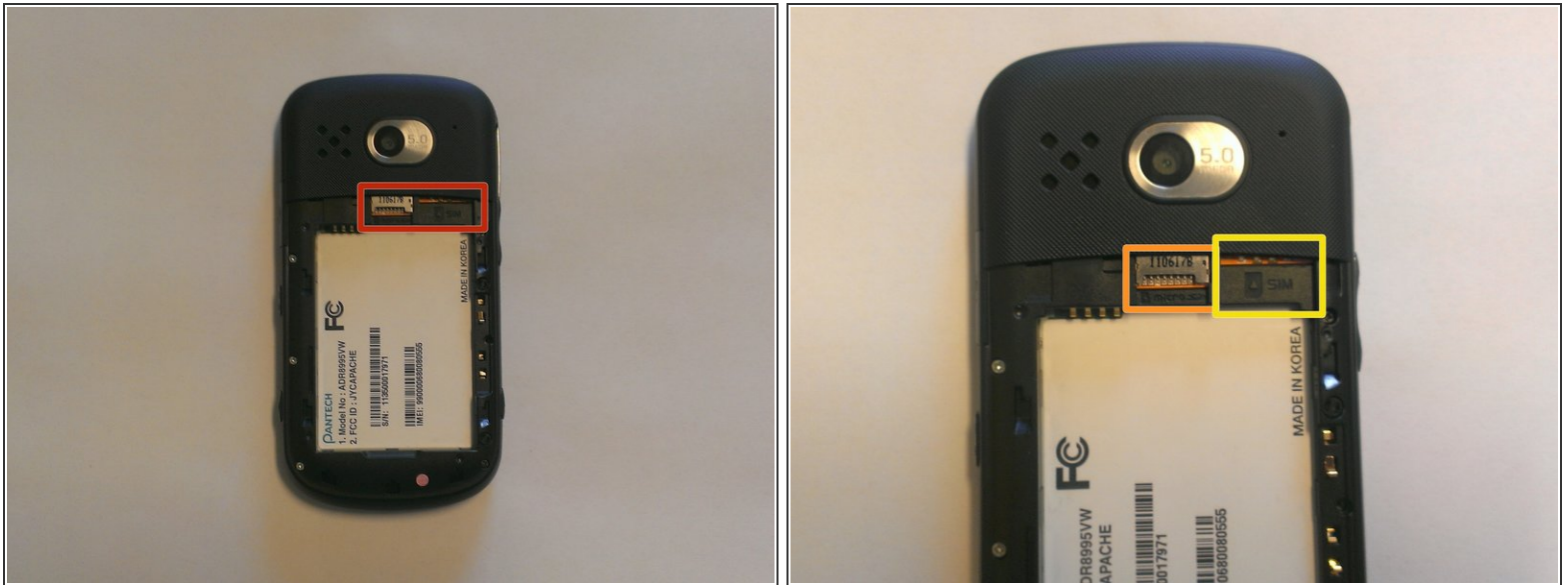
## Step 2 — Removing the Battery



- Locate the battery: It is a silver, rectangular object.
- Insert a fingernail into the indent just below the battery about 0.5 inches from the bottom of the phone.
- Then, apply pressure to the battery, pushing up and away from the phone. It will come out easily.



## Step 3 — Inserting Micro SD or SIM Card



- The slots for the Micro SD and SIM cards are directly above the battery tray.
- To insert a card, slide it face up into the slot. To remove a card, slide the card out from the slot.
- Micro SD Card Slot - On the Left
- SIM Card Slot - On the Right

To reassemble your device, follow these instructions in reverse order.