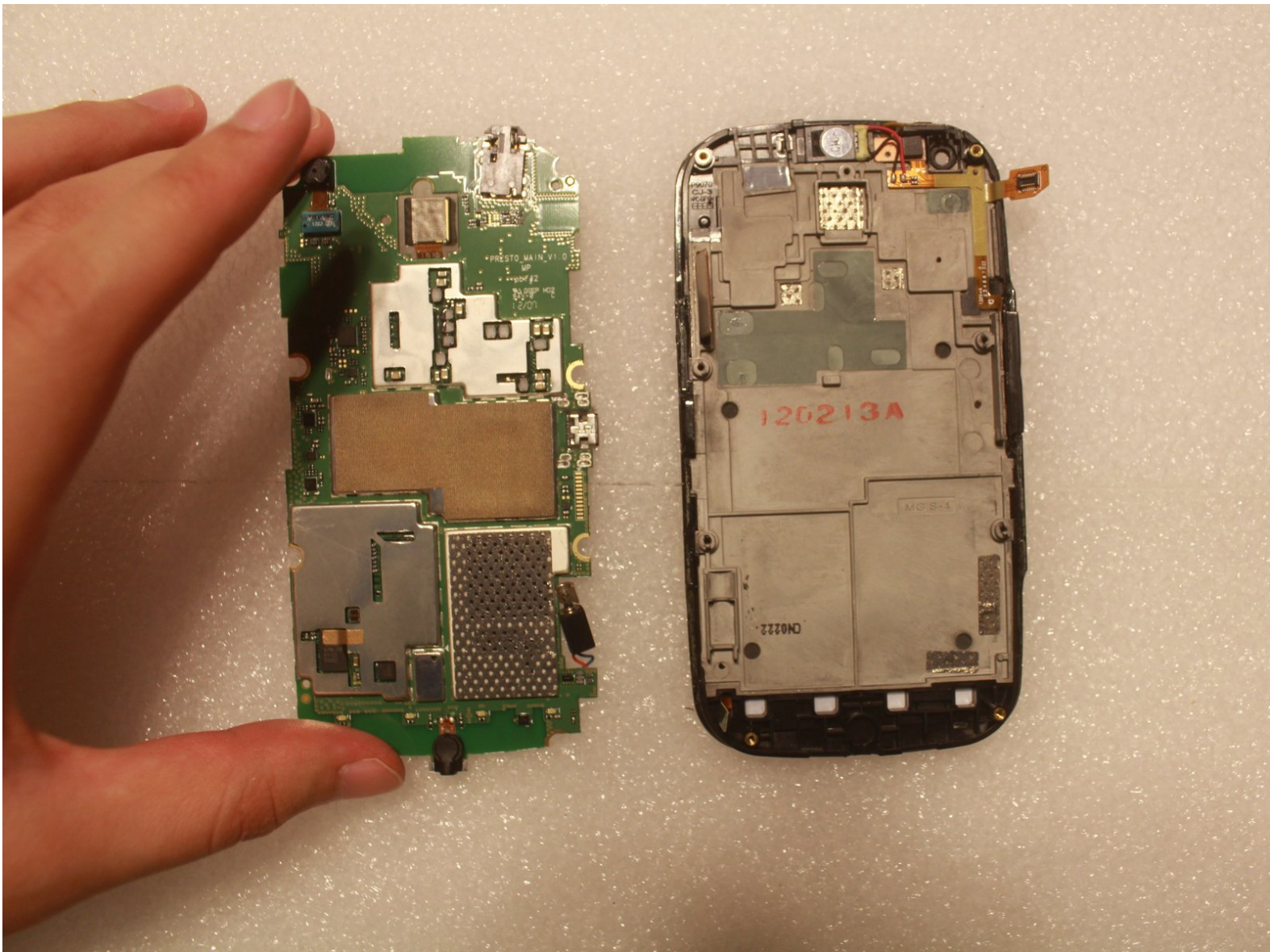




Pantech Burst Motherboard Replacement

Replace the motherboard in your Pantech Burst phone.

Written By: Kyle Kurashima



INTRODUCTION

This guide should help the reader through the necessary steps to successfully replace the Motherboard of your Pantech Burst. Be aware that the insides of the phone can be easily damaged and must be handled carefully.



TOOLS:

- [Phillips #000 Screwdriver](#) (1)
- [iFixit Opening Tools](#) (1)




PARTS:

- [Pantech Burst Replacement Motherboard](#) (1)

Step 1 — Motherboard

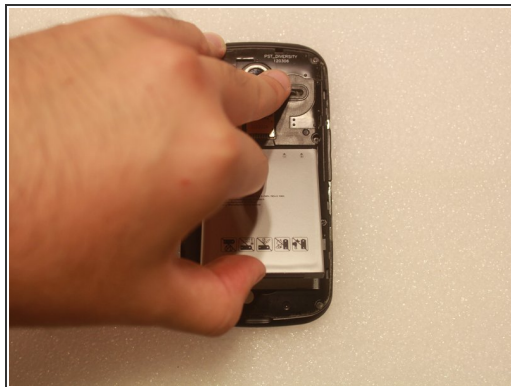
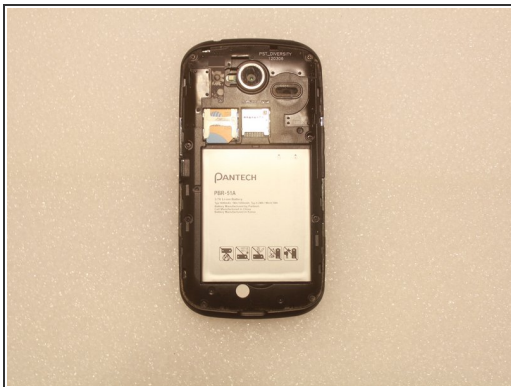


 Power off your phone before beginning disassembly.

- Turn over the phone so that you're facing the back cover.
- Locate the indent(?) below the back cover.
- Using a fingernail, pull up to remove the back cover.

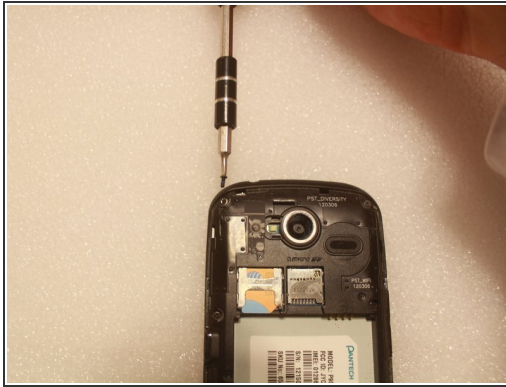
 Removing the back cover may require some force.

Step 2



- Locate the silver battery. It is the big, rectangular, silver tape on black plastic object.
- Find the gap between the battery and the rest of the device.
- Using your fingernail, gently pull the battery up and away from the rest of the device.

Step 3



- Undo all 8 visible screws using a phillips size 000 screwdriver.

 The screws are marked in red on the picture.

Step 4



- Remove the SD card if there is one inserted into the phone.

Step 5



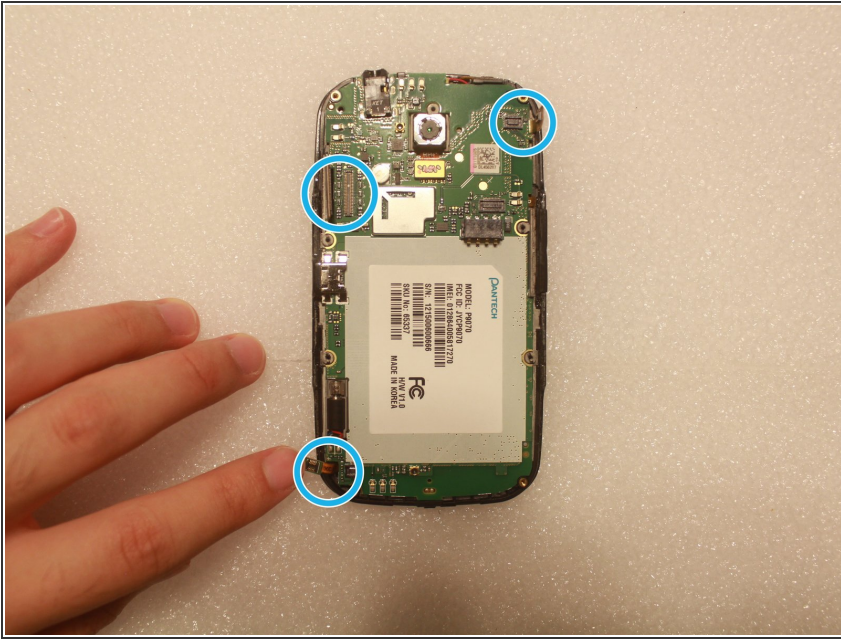
- Using an opening tool or some other solid, flat-ended tool, begin pulling apart the phone from the indent below the USB port.
 - Continue using the tool, while moving around the edge of the phone until the two parts are largely disengaged.
 - Once there is space enough to pull the pieces apart with your fingers, you may do so.
- i** Opening the phone may require a good amount of force.

Step 6



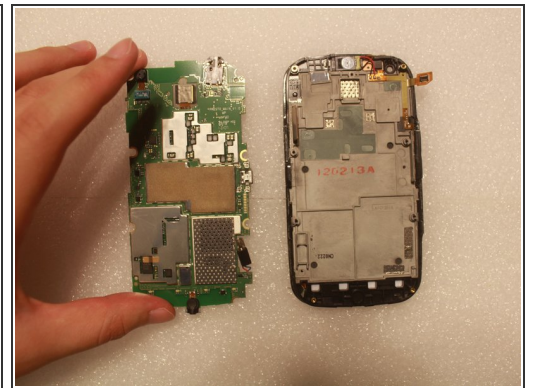
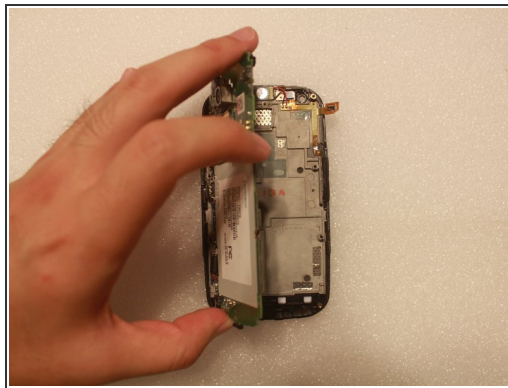
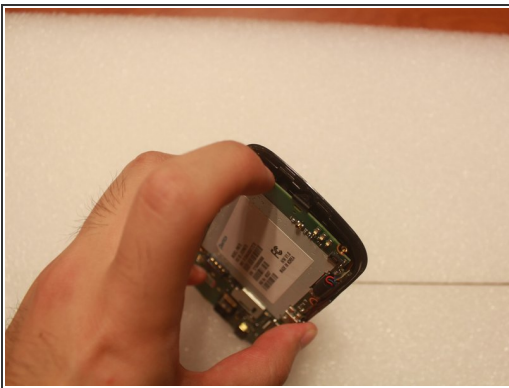
- Unscrew the screw with a phillips size 000 screwdriver.
- Disconnect the blue connector from the motherboard using a fingernail to lightly pull up.
- Gently remove the SIM/SD card part.

Step 7



- Gently disconnect the connectors attached to the motherboard using a fingernail to pull them up from the board.
- ❗ Connectors are marked in blue in the image.

Step 8



- Starting from the bottom and going around counterclockwise, carefully pry the motherboard out of the device.

⚠ Beginning with the side with the USB port may damage the phone.

To reassemble your device, follow these instructions in reverse order.