



# Pantech CDM8975 Keyboard Replacement

This guide will guide you through the replacement of a keyboard for the Pantech CDM8975.

Written By: Richard



## INTRODUCTION

You will need a Phillips screwdriver to remove the screws from the back of the phone, and a spudger to pry the plastic pieces from each other.



### TOOLS:

- [Phillips #00 Screwdriver](#) (1)
  - [Spudger](#) (1)
-

## Step 1 — Keyboard



- Remove the battery.
- Remove four Phillips screws.

## Step 2



- Pry up the plastic layer with a plastic opening tool.
- **NOTE:** Be careful that you do not separate the two plastic parts completely they are fragile and may break if pulled too hard.

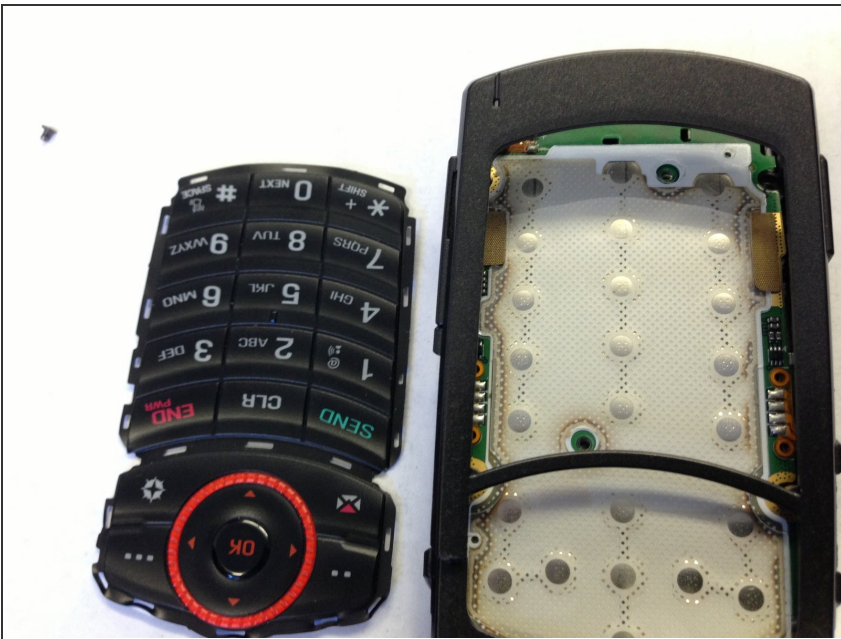


### Step 3 — Remove Keyboard



- Slide out the keyboard carefully in between the two layers.

### Step 4



- Insert the new keyboard in between the two layers carefully.

## Step 5



- Check if the edges are perfectly aligned between the two plastic layers after you insert the keyboard.

## Step 6



- Press the two plastic layers back together.
- Reinsert the four screws and place the battery and cover back.

You now have a new keyboard.