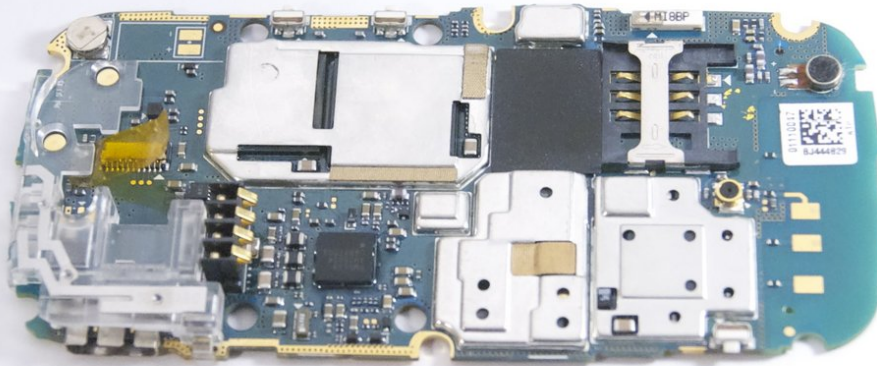




Pantech Matrix Motherboard Replacement

This guide provides step-by-step instructions on how to properly replace the motherboard of the Pantech Matrix C740.

Written By: Zeel Patel



INTRODUCTION

The motherboard of the Pantech Matrix C740 functions as the control center for phone functioning; however, faulty functioning of the motherboard may cause the device to either not function properly or not function at all. Therefore, this guide serves as an aid in the replacement of the motherboard for the Pantech Matrix C740.

TOOLS:

- [Spudger](#) (1)
 - [Phillips #000 Screwdriver](#) (1)
-

Step 1 — Phone Orientation



- Place phone with screen side facing toward you.

Step 2 — Phone Orientation



- Flip phone over so screen side is now facing down.

Step 3 — Remove Back Cover



- Gently slide the backside phone cover off exposing the battery underneath.

Step 4 — Lift Battery



- Carefully lift the battery up from where the spudger is pointed.

Step 5 — Remove Battery



- Remove the battery from its dock.

Step 6 — Slide SIM Card Out



- Slide the SIM Card out of its dock.

Step 7 — Remove Phone Screws



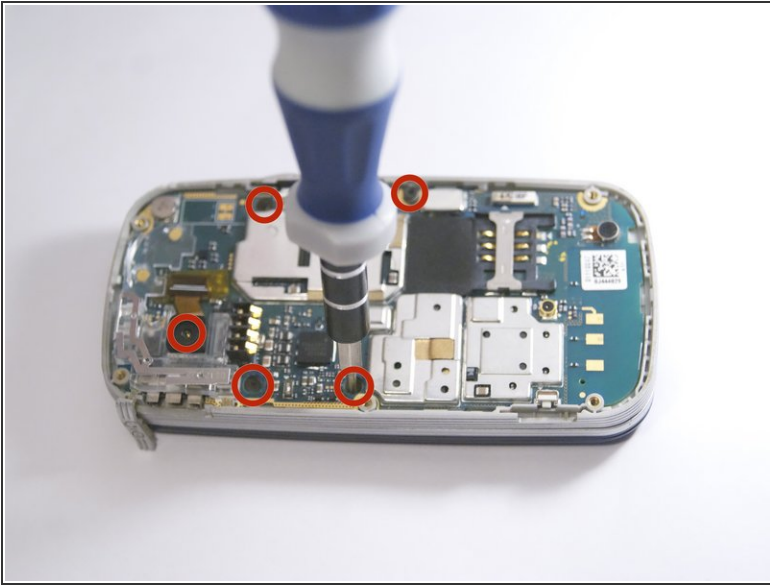
- Use a Phillips screwdriver to remove the four 2mm Phillips #000 screws from each corner of the device.

Step 8 — Remove Phone Casing



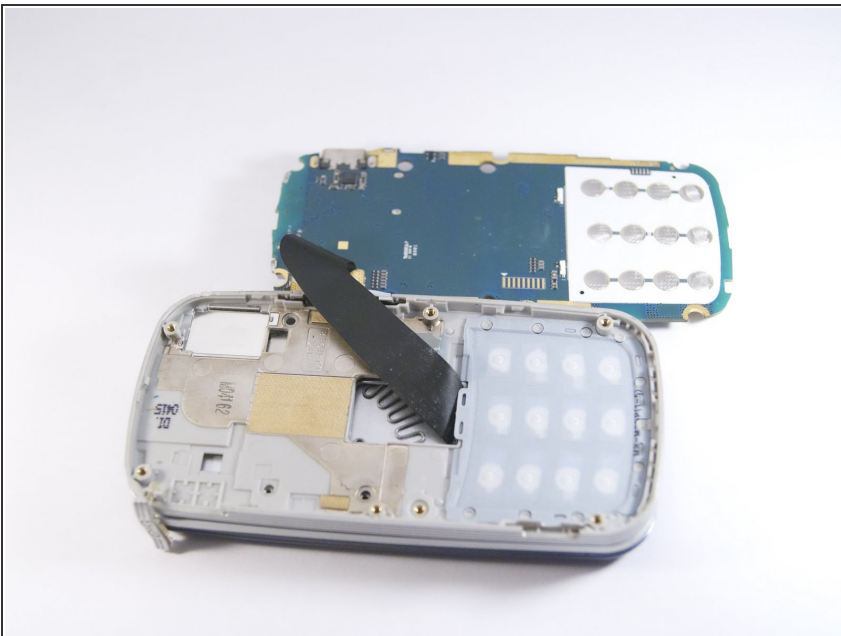
- Rotate the phone so the base is facing you.
- Use spudger to separate phone casing and inside as shown.
- Remove the casing carefully and set aside.

Step 9 — Remove Camera Screws



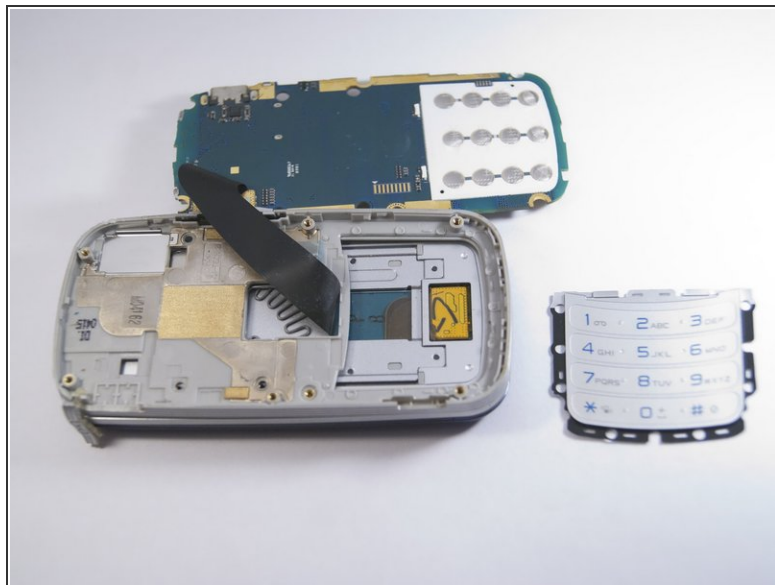
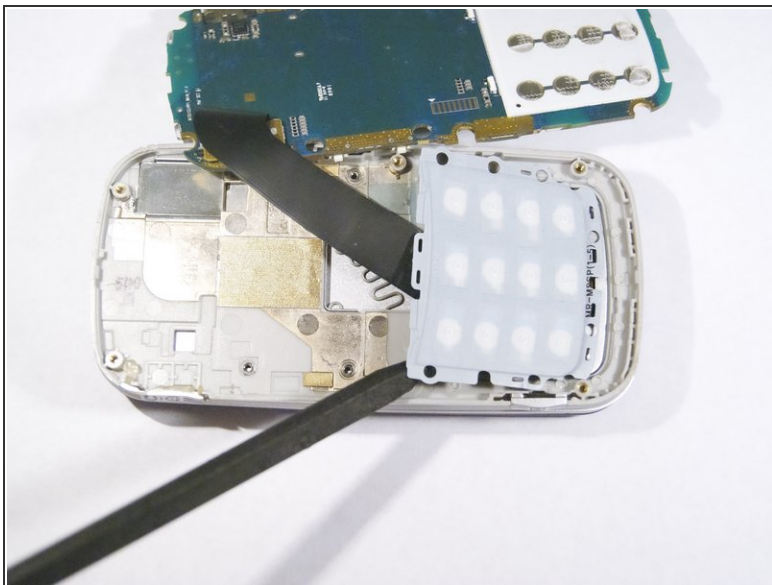
- Place phone with exposed motherboard facing you.
- Use a Phillips screwdriver to remove the five 2mm Phillips #000 screws holding the camera in place.

Step 10 — Expose Keypad



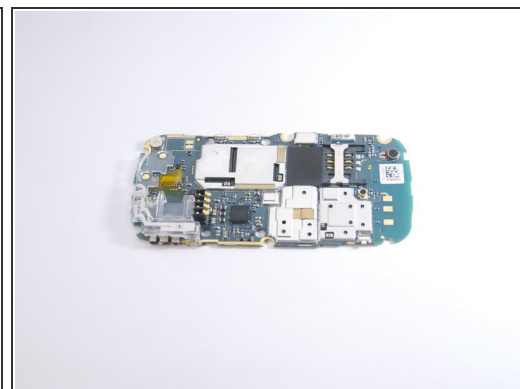
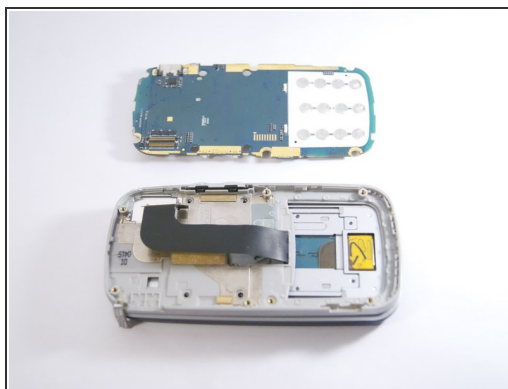
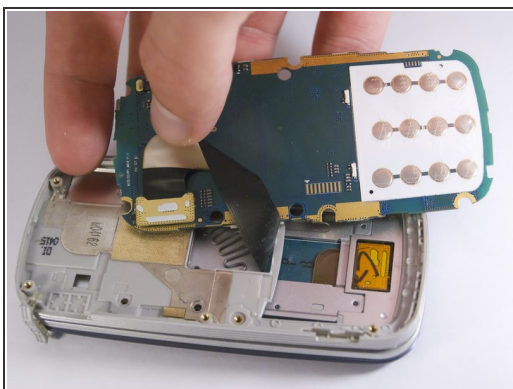
- Carefully lift up the motherboard to expose the back of the keypad.

Step 11 — Remove Keypad



- Use spudger to gently pry the keypad away from the rest of the phone.

Step 12 — Remove Motherboard



- Grip the motherboard and gently pull to separate it from the rest of the phone.

To reassemble your device, follow these instructions in reverse order.