



Patagonia Transport Roller Telescoping Handle Replacement

Here's how to replace a jammed or stuck telescoping handle on your Patagonia Transport Roller Luggage, Style Number 49405.

Written By: Marty Rippens



INTRODUCTION

The telescoping handle on your Patagonia Transport Roller Luggage is designed to withstand years of hard use. But sometimes the handle becomes jammed or stuck and needs to be replaced to operate properly. Fortunately, installing a replacement handle is quick and easy.

For replacement parts or further assistance, contact [Patagonia Customer Service](#).

This guide is specifically for the Patagonia Transport Roller, Style Number 4905. If you aren't sure which bag you have, [here's a guide](#) that can help you identify the style number of Patagonia products.



TOOLS:

- [Phillips #1 Screwdriver](#) (1)
-

Step 1 — Telescoping Handle



- Lay your Transport Roller on its back on a table.
- Unzip the main compartment.

Step 2



- Flip open the main compartment of your bag.

Step 3



- Unbuckle the internal compression straps.

Step 4



- Unzip the the zipper in the gray inner lining of the bag, opening the lining as you go.

Step 5



- Remove the two Phillips #1 screws from the retaining bracket at the bottom of the bag.

i These screws are approximately 2 cm in length.

Step 6



- Remove the five Phillips #1 screws from the retaining bracket at the top of the bag.
- i* These five screws are 1.5 cm in length, visibly shorter than the screws removed from the bottom retaining bracket.

Step 7



- Remove the black plastic retaining bracket from the top of the frame.

Step 8



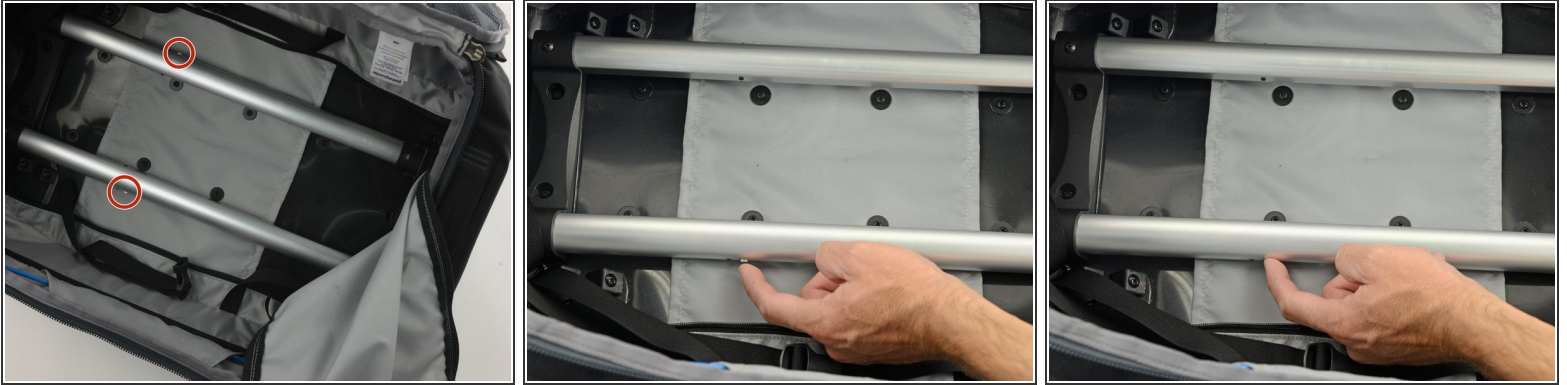
- Using your thumb, depress the button on the telescoping handle.
- With the button depressed, extend the handle by pulling away from the bag.

Step 9



- Turn the bag over so that the back is facing up.
 - Remove the telescoping handle assembly by pulling it out of the top of the bag.
- i** This step may take some force. It may help to push down on the back of the bag while pulling up on the outer edge of the plastic handle guard so the screw anchors can move up and out of the holes in the hard backing.

Step 10



- If you are having trouble with your handle, check the pins inside the bag.
- i** When you depress the button on the handle, the two pins on the sides of the handle should retract, freeing the handle to slide.
- If either pin is not retracting when the button on the handle is depressed, push the pin into the hole using your finger or another thin object such as a pencil or screwdriver.

Step 11



- With the pin depressed, pull the handle to extend it from the bag.

To reassemble your luggage, follow these instructions starting with Step 9. You'll be working backwards now from that point in the guide, following the steps in reverse order.