



Patching a Hole in Drywall

This guide will show the basic principles of how to patch a small hole in a wall.

Written By: Michael Toscano



INTRODUCTION

After a big party in your apartment, have you ever found a chunk of drywall knocked out of your wall? If so, follow this repair guide to bring your party palace back to its original splendor and get your security deposit back.



TOOLS:

- [Allway Putty Knife 3-pack](#) (1)
 - [Spackle](#) (1)
 - [String](#) (1)
 - [Adhesive Wall Repair Patch](#) (1)
 - [400 Grit Sandpaper](#) (1)
 - [Paint](#) (1)
 - [Small Paintbrush](#) (1)
-

Step 1 — Patching a Hole in Drywall



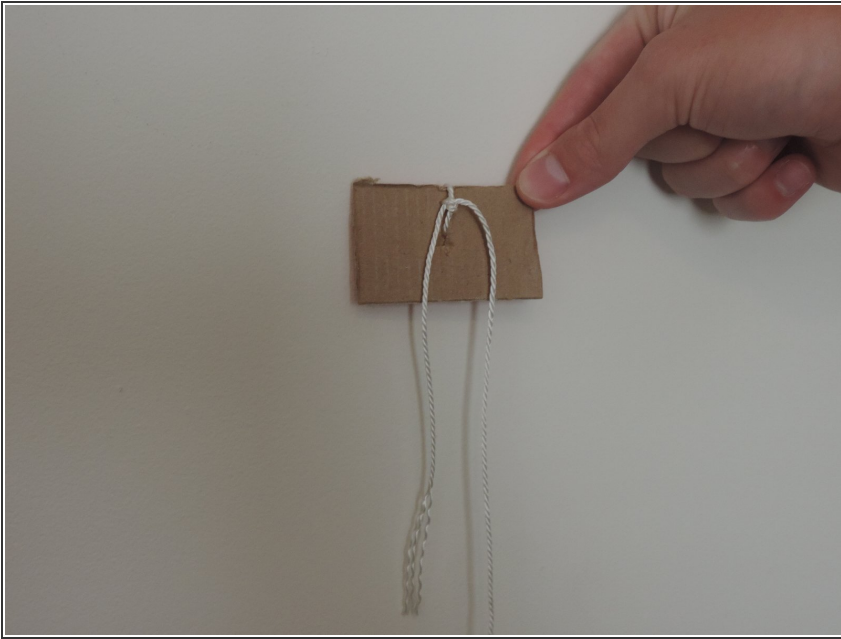
- Here you have a typical hole. It has broken into the drywall and needs to be repaired.
- This hole is approximately 2" X 2".

Step 2



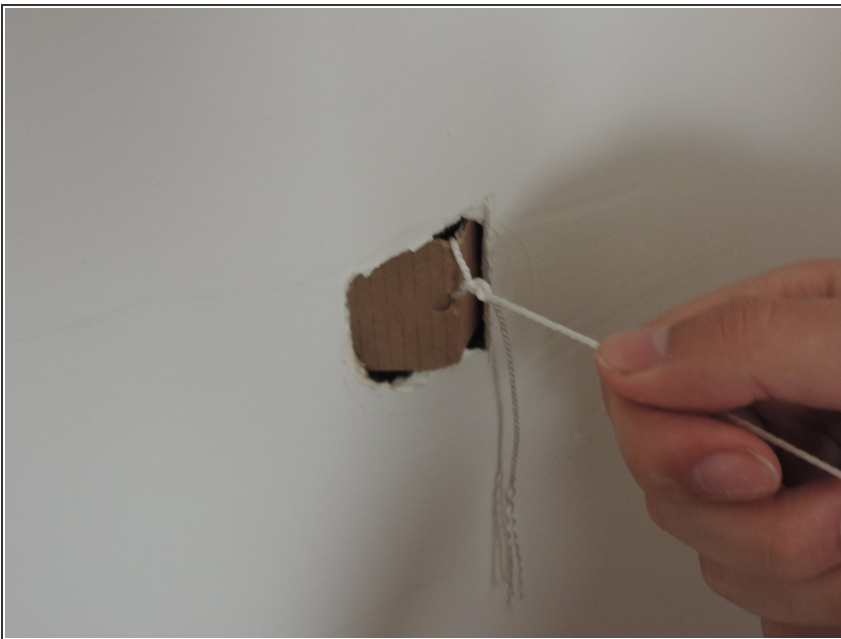
- For this fix, you will need (from left to right): an adhesive wall repair patch, spackle, string, a putty knife, and sand paper.
- NOT PICTURED: Paint that matches the color of the wall you are fixing and the scrap of cardboard used in the hole.

Step 3



- Use a scrap piece of cardboard and tie about 9 inches of string around it.
- You will need the strongest piece of cardboard available to ensure a better fix.

Step 4



- Put the cardboard in the hole.
- Pull the string so that the cardboard is flush with the wall.
- This step makes it easier to plaster.

Step 5



- Plaster the hole carefully, and be sure to keep the string taut during this process.

Step 6



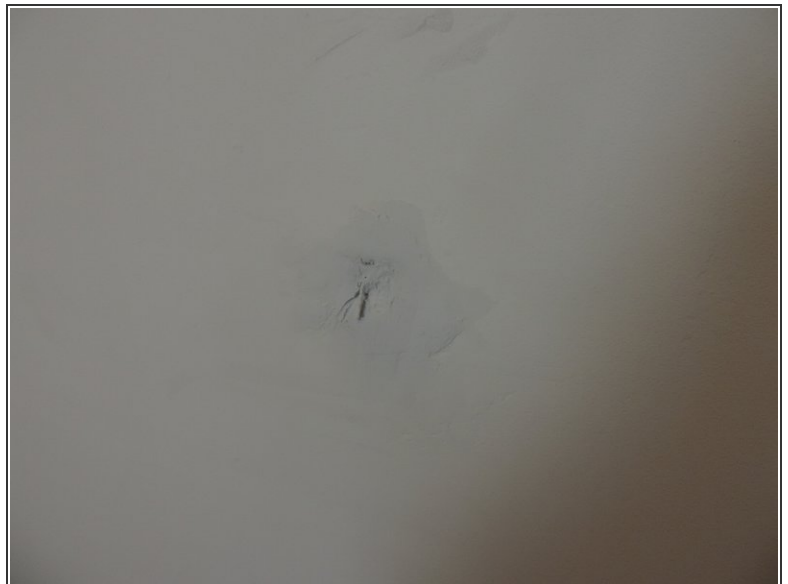
- Once the plaster is started, let it dry (will require several hours).
- Find a way to keep it straight, as seen here with this door knob.

Step 7



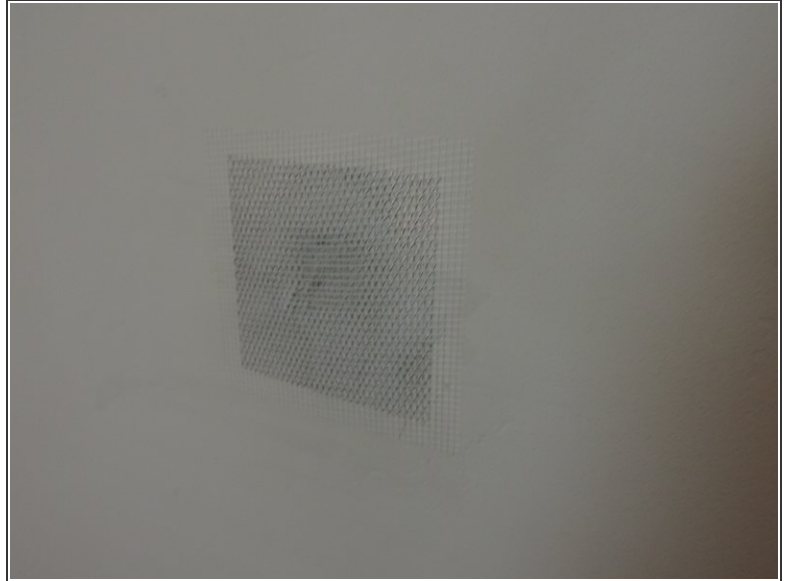
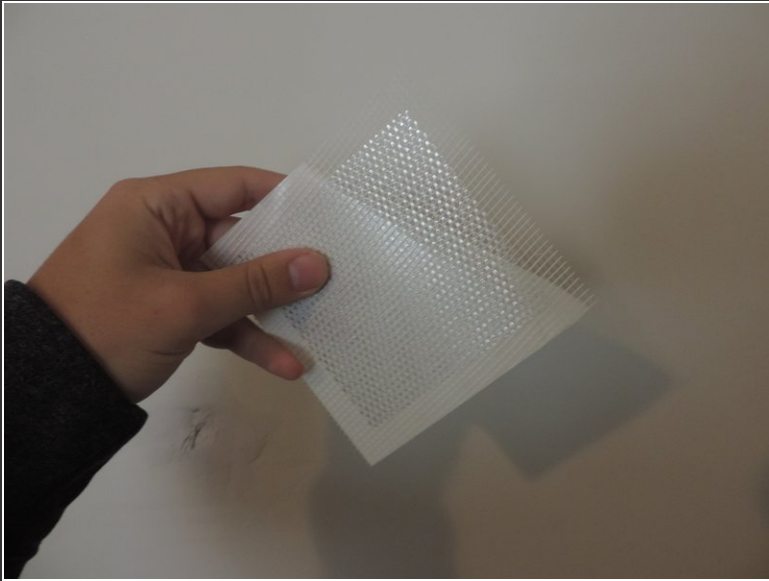
- Once dry, continue to plaster up the hole completely.

Step 8



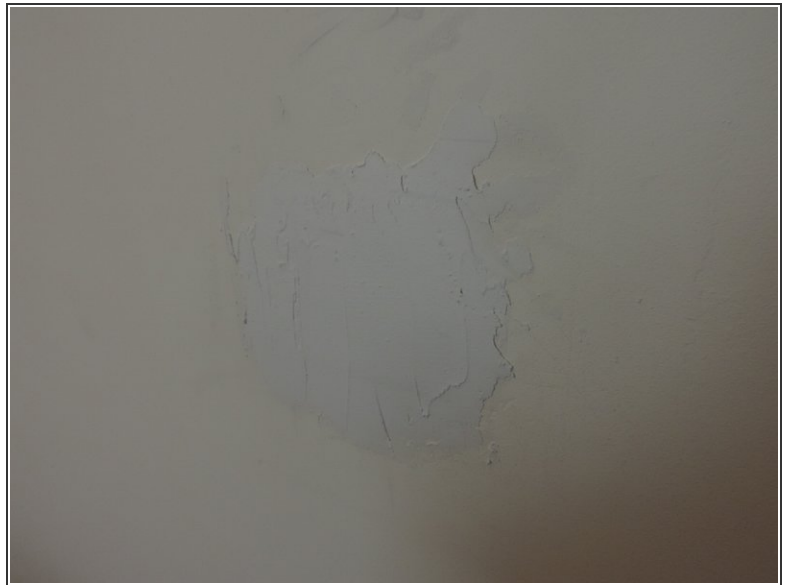
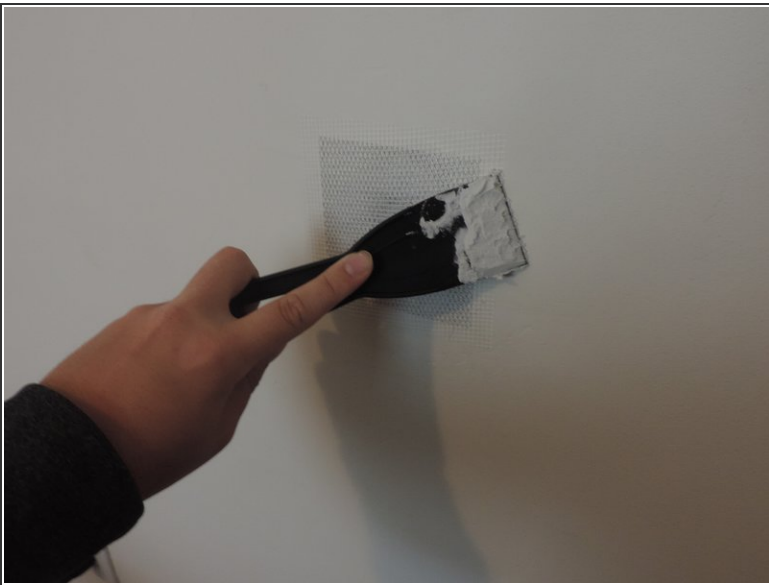
- Prepare the sand paper and begin to sand off all excess bumps and lumps.
- Cut off the extra string.

Step 9



- Peel off the adhesive wall patch from its wax paper.
- Center the patch on the hole and seal it down.

Step 10



- For this next step, you will apply plaster to the patched area.
- Apply until the patch is no longer visible.

Step 11



- To finish this repair, you will want to apply paint. It will make the finished product more attractive, as seen here.
- ⓘ In order to show the repaired hole, only one coat of paint was applied. Add at least 2 coats to fully cover up the repair.

Now go throw another party, and work you way back to being the party king!