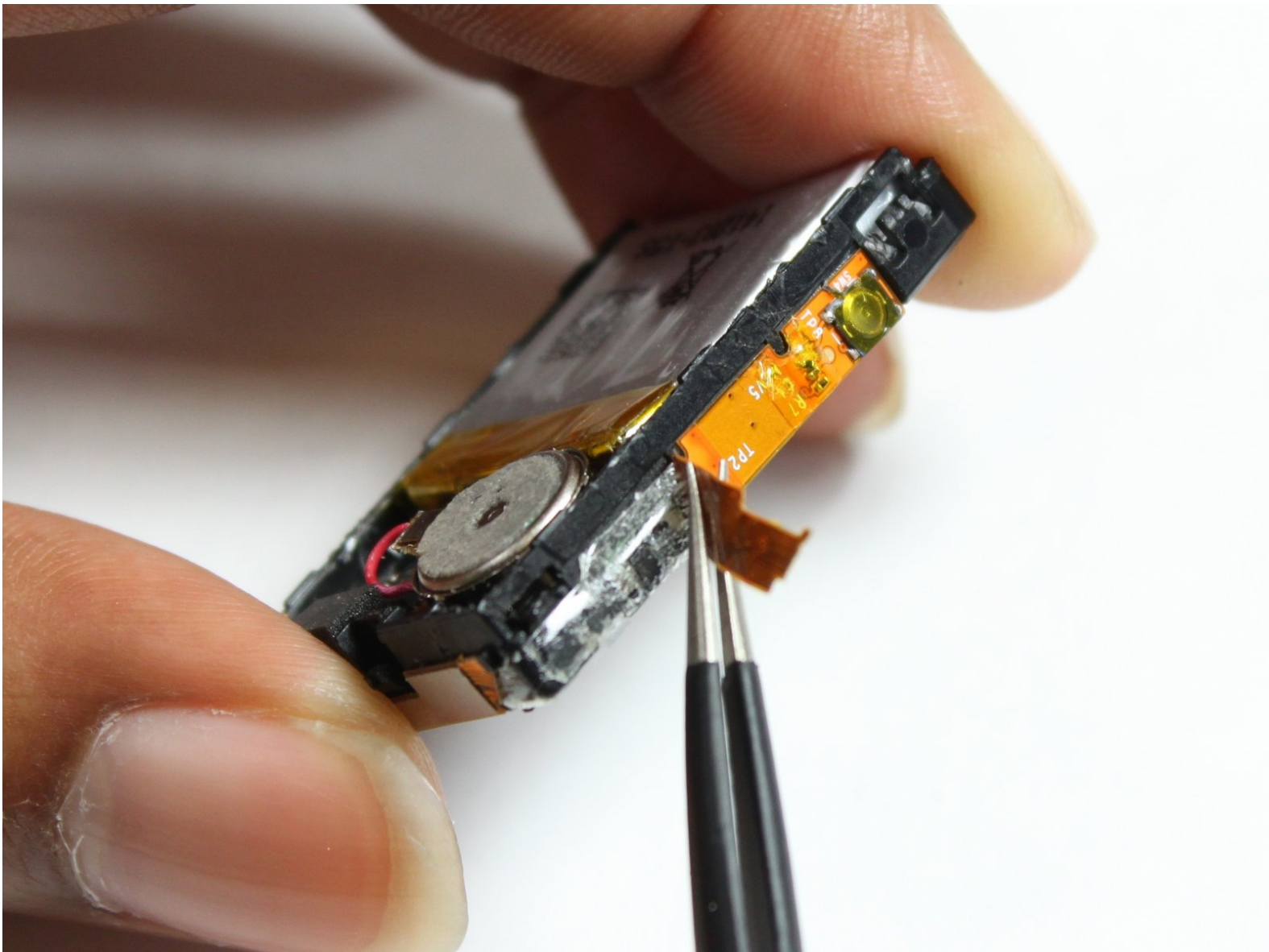




Pebble Steel Buttons Replacement

This is a guide to replace the inner ribbon for the buttons.

Written By: Orlandria Heggs



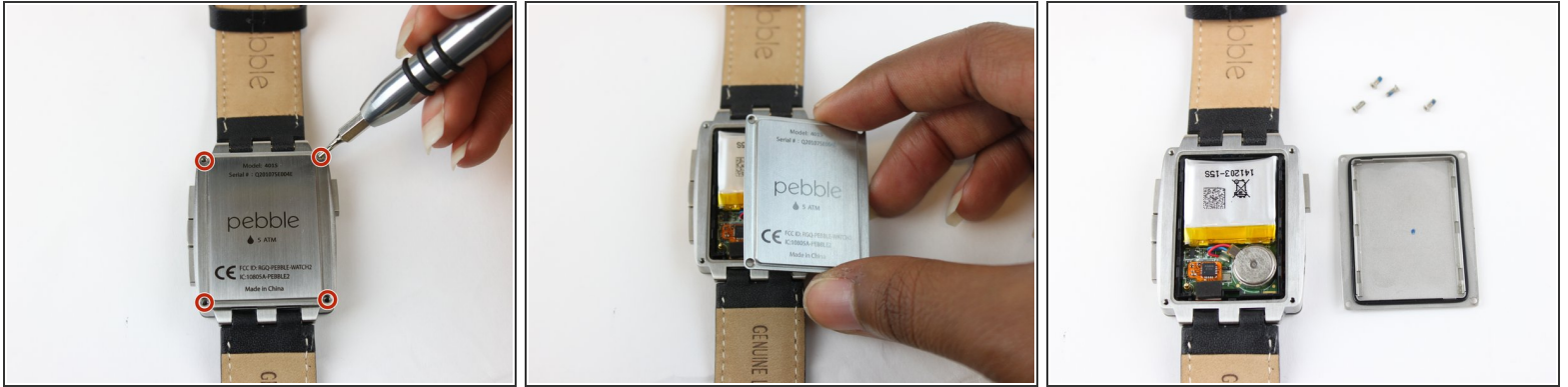
INTRODUCTION

Are the buttons on your Pebble Steel not responding anymore? This could result from the inner sensors being worn down. Replacing the inner Zebra ribbon may fix this problem.

TOOLS:

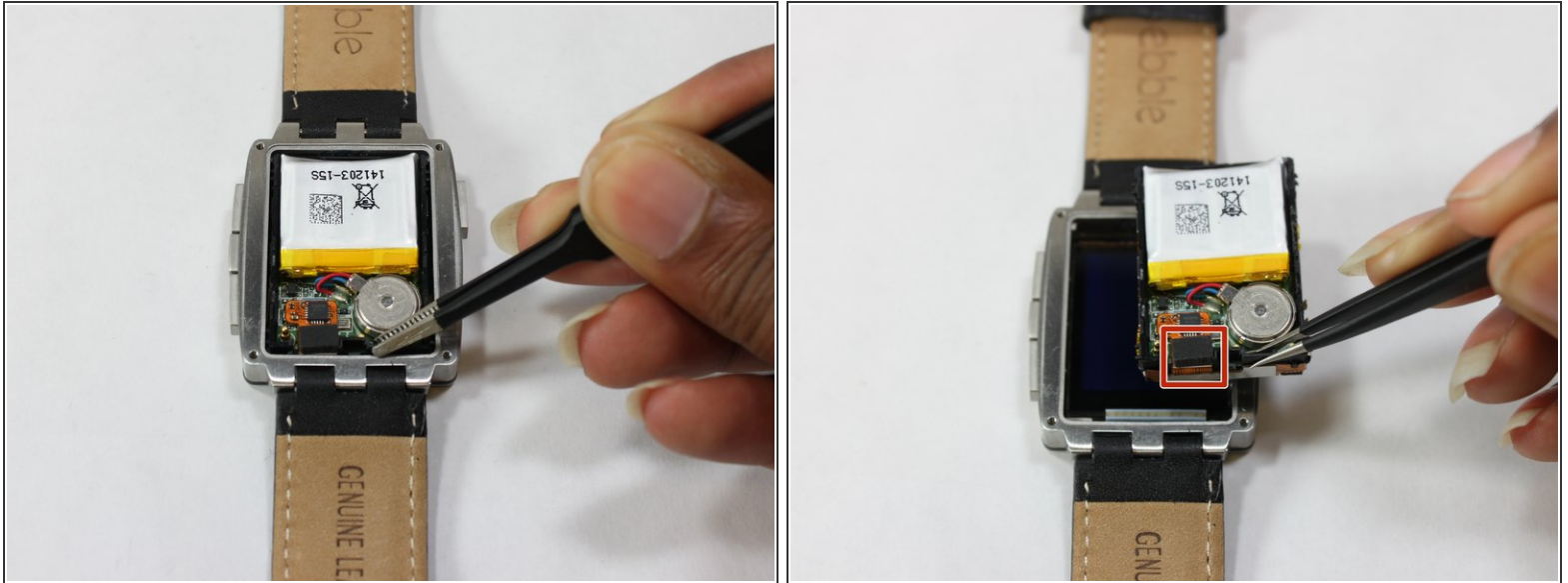
- [T3 Torx Screwdriver](#) (1)
 - [Tweezers](#) (1)
-

Step 1 — Internal Hardware



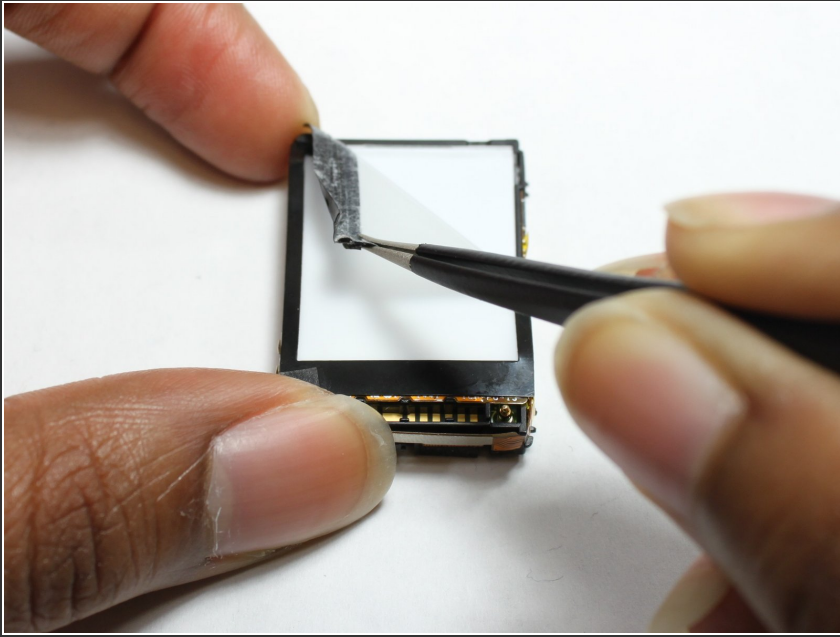
- Use a Torx T3 screwdriver to unscrew the four 3.5 mm Torx T3 screws holding the back plate.
- ☑ Make sure the screws are kept in a safe place to insure they are not lost.
- Remove the back plate.

Step 2



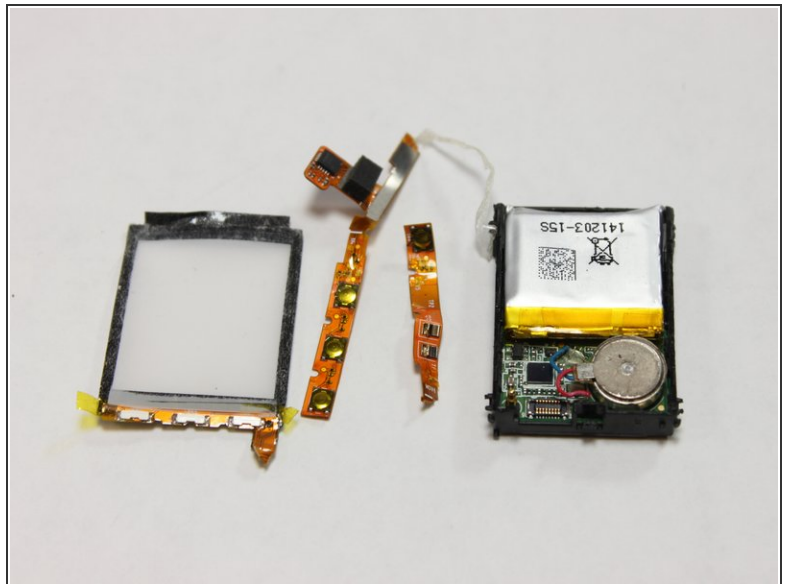
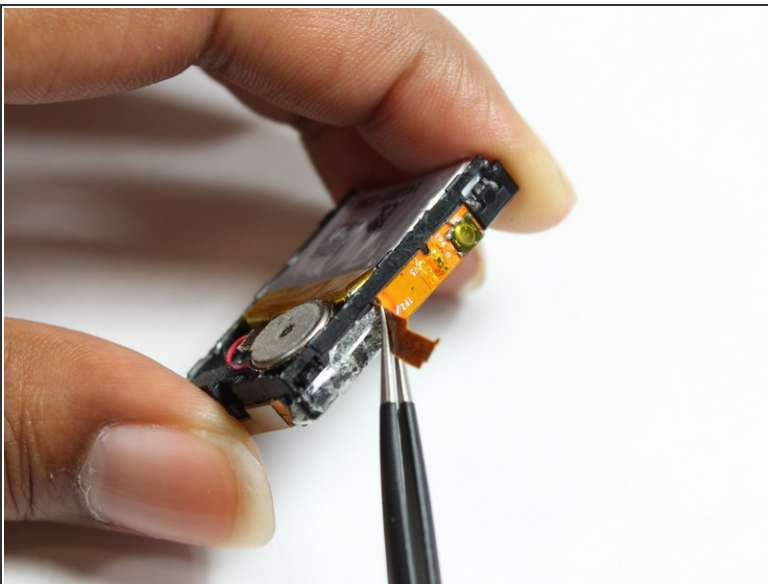
- The plastic frame is clipped inside the steel body with four clips, two each on the left and the right side of the watch, near the corners. You can stick a small screwdriver into the cutouts right above the clips and gently lever the plastic frame up, corner by corner.
- Once the clips are released, use a pair of tweezers to grab onto the black plastic frame and remove the internal hardware.
- ⓘ Adhesive on the back side of the battery holds the internal components to the front case.
- Use tweezers or a plastic opening tool to disconnect the ribbon cable from the motherboard.

Step 3 — Buttons



- Starting in the top right corner, use a pair of tweezers to remove the white film.

Step 4



- Continue pulling off the attached orange Zebra ribbon and the inner sensors attached to the ribbon.

i If pieces of the orange Zebra ribbon remain on the frame, remove them.

To reassemble your device, follow these instructions in reverse order.