



# Pebble Steel failure of screen

Repairing the screen issue in the Pebble Steel smart watch. The unreadable screen is fixed with this simple solution.

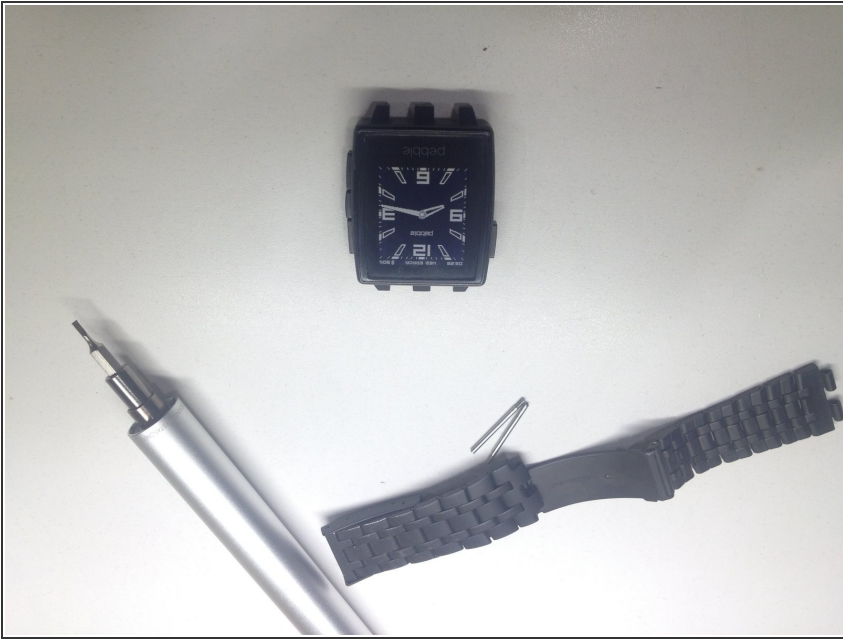
Written By: Marcos Garcia



# INTRODUCTION

Before any repairing starts, you must have a clean space and a T5 screwdriver and another 1.5 flathead.

## Step 1 — Disassemble Strap



- The first step is to remove the strap. To do this, we will use a 1.5mm flathead screwdriver.

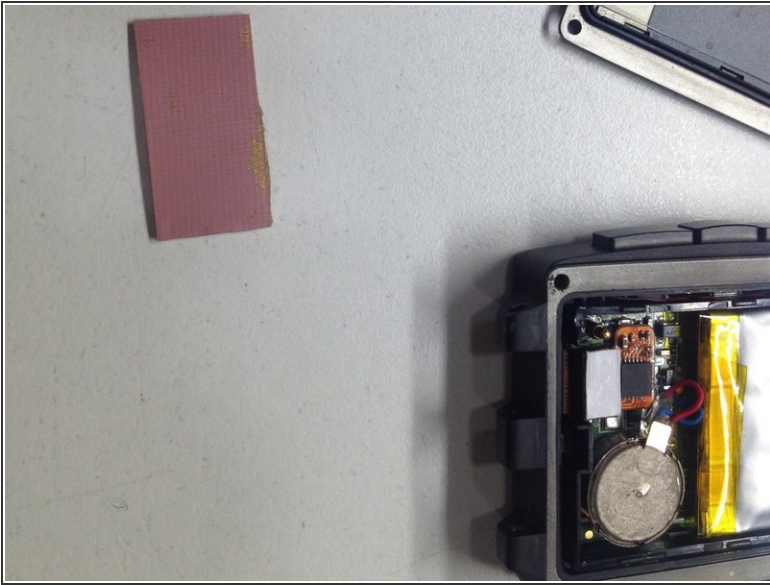
## Step 2 — Remove back cover



- We will disassemble the cover of the clock using a screwdriver T-5, and being careful with the rubber gasket that has, we will remove the metallic cover.

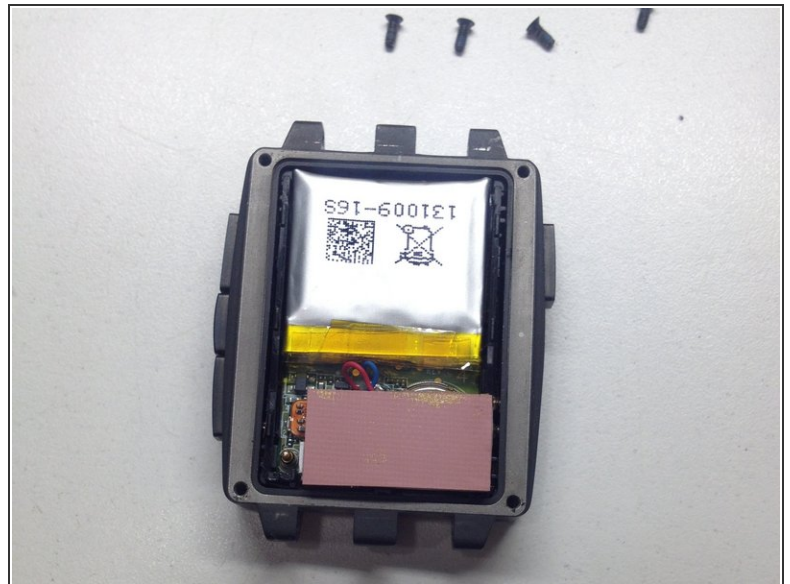
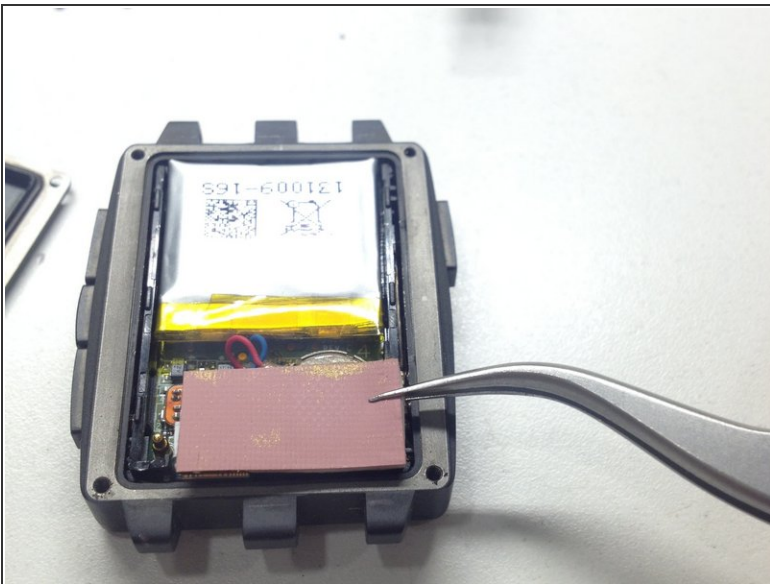


### Step 3 — Find and cut a soft rubber



- In this step we will look for a dissipative silicone of those that carry the laptops for the microprocessor. If you do not have it, you could use a piece of soft rubber that does not exceed 0.65mm thick.

### Step 4 — Place rubber



- We will place this rubber in the lower right corner of the watch, on the vibrator and the connector of the screen. The golden connector on the left must be left free since it makes contact with the lid.

## Step 5 — Close and READY !!!!



- Finally we assemble the clock reversing the steps. '++ It is important when placing the cover to put first the two screws above and then the two screws below.' (This forces the entire internal chassis, thus exerting a pressure on the rubber contact of the screen.)

For reassembling your device, follow these instructions in the reverse order.