



Pebble Time Battery Replacement

Removal of battery for replacement.

Written By: Nicolas Hempe



INTRODUCTION

Removal of battery for replacement.



TOOLS:

- [Metal Spudger](#) (1)
 - [iFixit Opening Tools](#) (1)
 - [Phillips #000 Screwdriver](#) (1)
-

Step 1 — Screen Cover



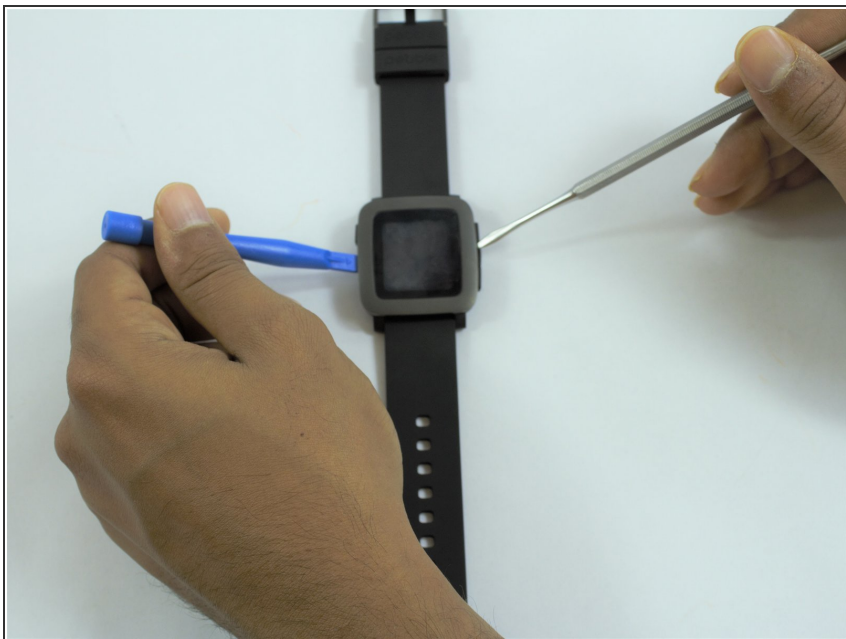
- Lay the watch flat on your workstation.

Step 2



- Use the metal spudger to carefully pull apart the screen cover from the case.
- Replace the metal spudger with a plastic opening tool to hold the cover open.

Step 3



- Use the metal spudger tool to carefully loosen the rest of the cover.

Step 4



- Carefully, pull apart the cover with the plastic opening tool.

Step 5 — Screen



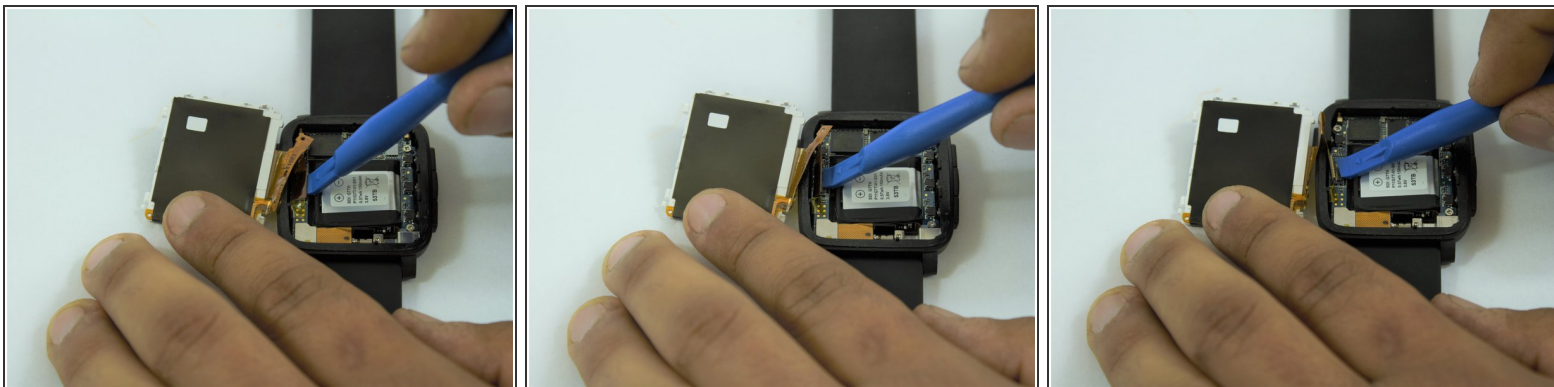
- Insert metal spudger into the side of the screen shown in the picture.

Step 6



- Use the metal spudger to pry the screen up.

Step 7



- Once screen is lifted, insert plastic opening tool between the screen connector and circuit board.
- Disconnect the screen from the circuit board.

Step 8 — Circuit Board



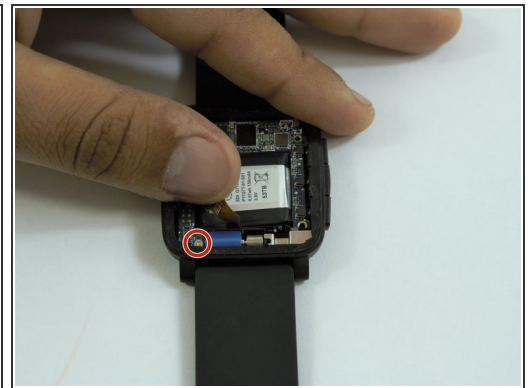
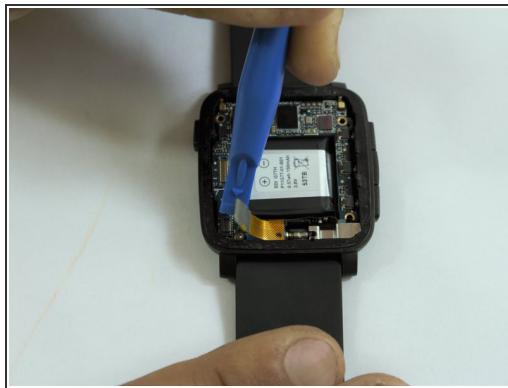
- Keep the watch flat on your workstation.

Step 9



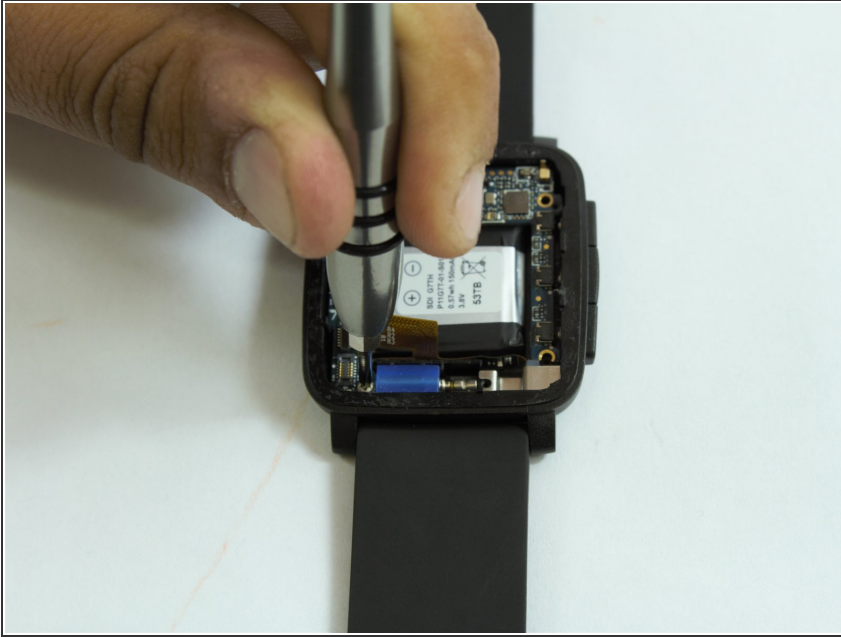
- Locate the three screws on the circuit board.
- Remove using the J000 Philips head screwdriver.

Step 10



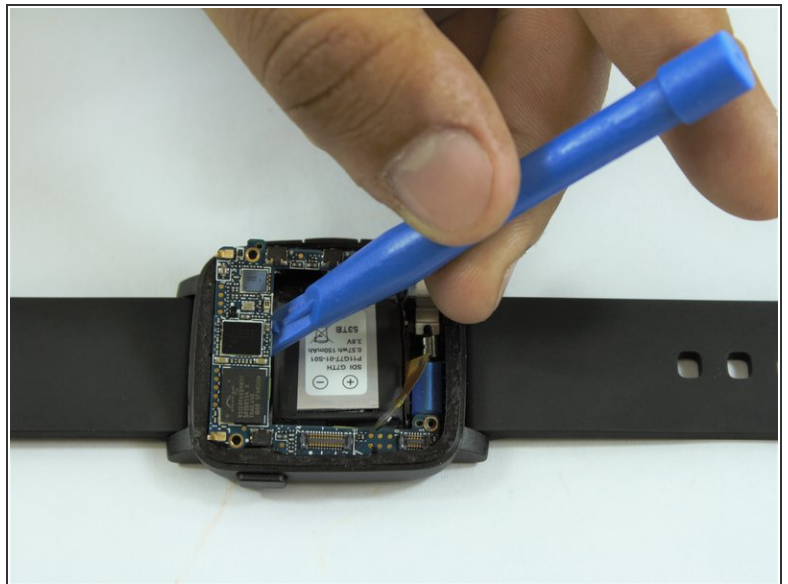
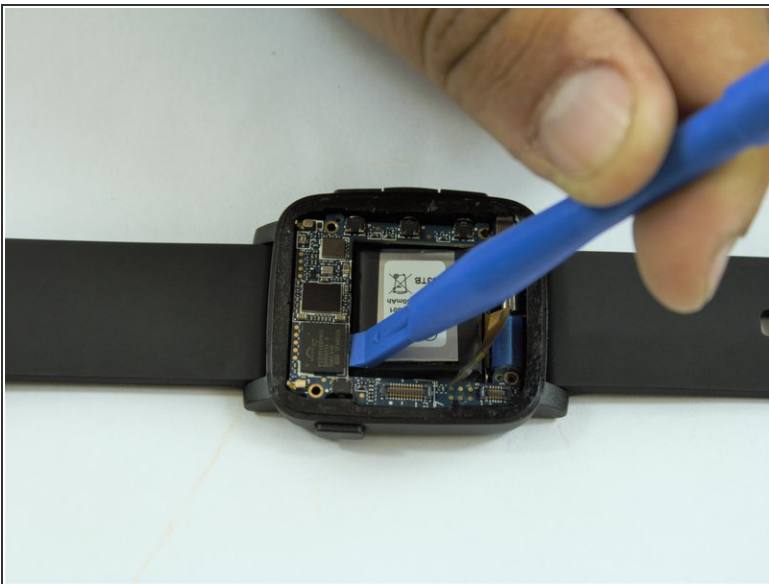
- Carefully disconnect the connector wire on the bottom left edge of the circuit board using a plastic opener tool.
- Move apart the connector to expose the fourth screw.

Step 11



- Remove the final screw from the circuit board with a J000 Philips head screwdriver.

Step 12



- Turn the watch to the side and use the plastic opening tool to lift up the circuit board.
- Remove the circuit board from the case.

Step 13 — Battery



- After removing the circuit board, the battery is located in the middle of the case.

Step 14



- Locate the battery connector on the left side of the case.
- Carefully disconnect the wire using a metal spudger.

Step 15



- After disconnecting the battery use the plastic opening tool to lift the battery off of the case.
- ⓘ The battery might be glued to the case.

To reassemble your device, follow these instructions in reverse order.