



# Pebble Time Circuit Board Replacement

Replacement guide for the circuit board of the Pebble Time.

Written By: Nicolas Hempe



---

# INTRODUCTION

Replacement guide for the circuit board of the Pebble Time.



## TOOLS:

- [Metal Spudger](#) (1)
  - [iFixit Opening Tools](#) (1)
  - [Phillips #000 Screwdriver](#) (1)
-

## Step 1 — Screen Cover



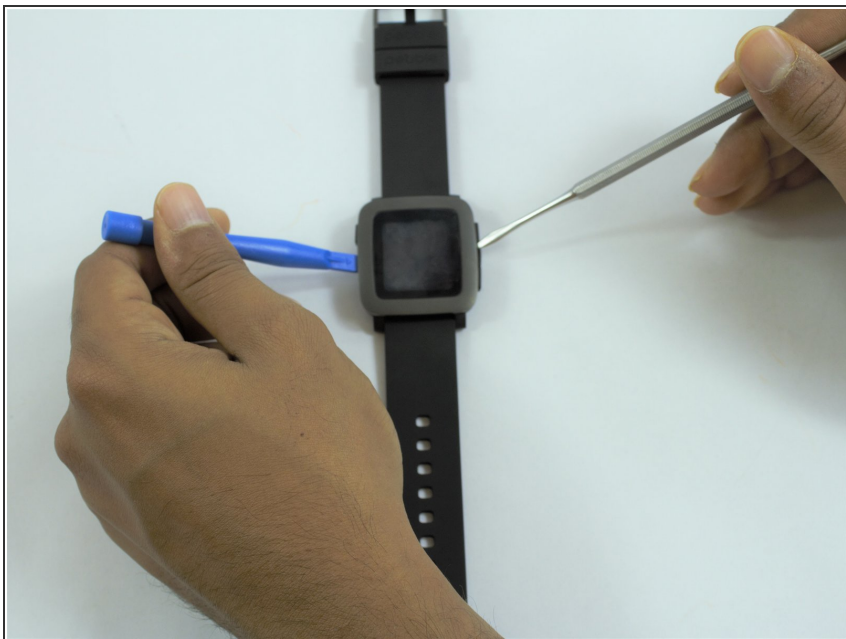
- Lay the watch flat on your workstation.

## Step 2



- Use the metal spudger to carefully pull apart the screen cover from the case.
- Replace the metal spudger with a plastic opening tool to hold the cover open.

### Step 3



- Use the metal spudger tool to carefully loosen the rest of the cover.

### Step 4



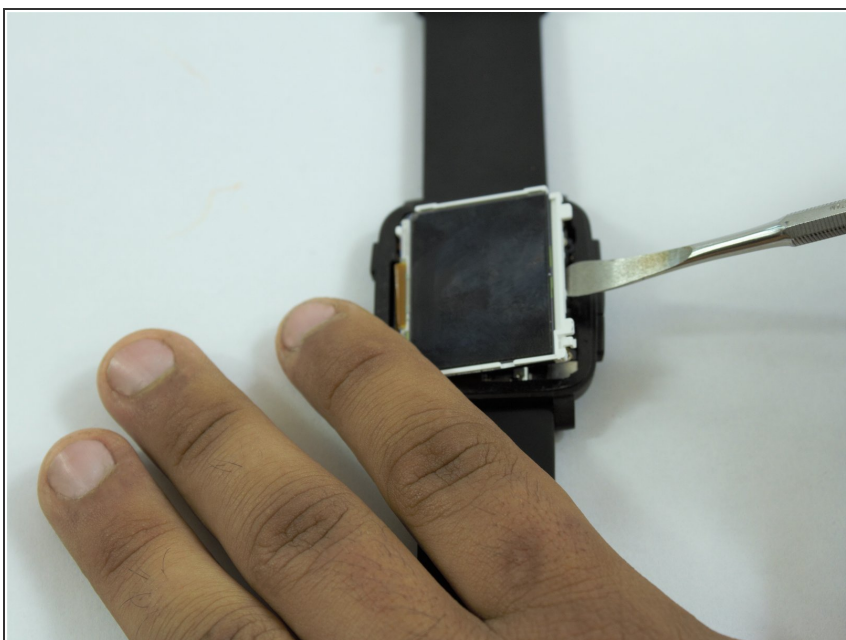
- Carefully, pull apart the cover with the plastic opening tool.

## Step 5 — Screen



- Insert metal spudger into the side of the screen shown in the picture.

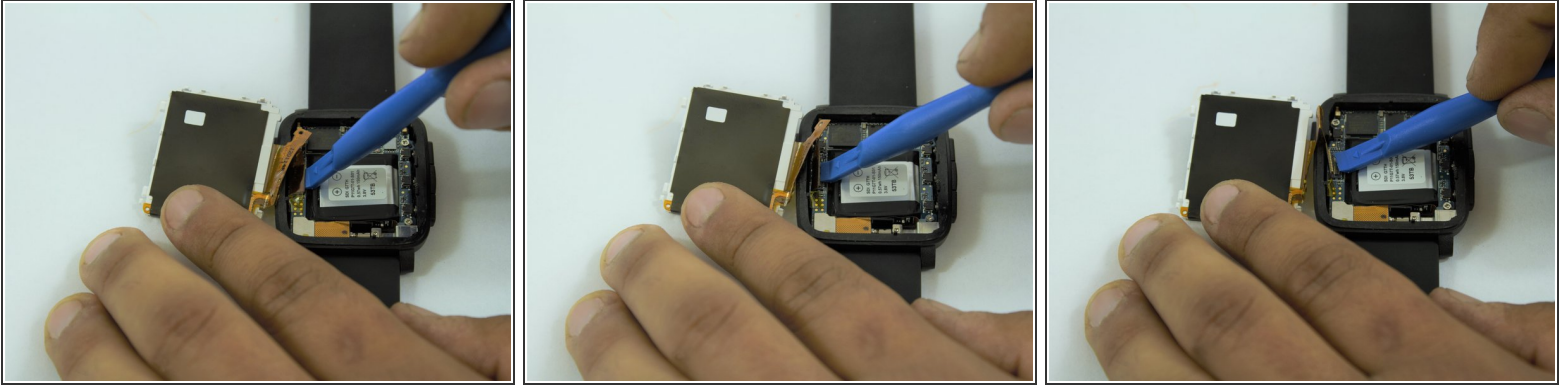
## Step 6



- Use the metal spudger to pry the screen up.



## Step 7



- Once screen is lifted, insert plastic opening tool between the screen connector and circuit board.
- Disconnect the screen from the circuit board.

## Step 8 — Circuit Board



- Keep the watch flat on your workstation.

## Step 9



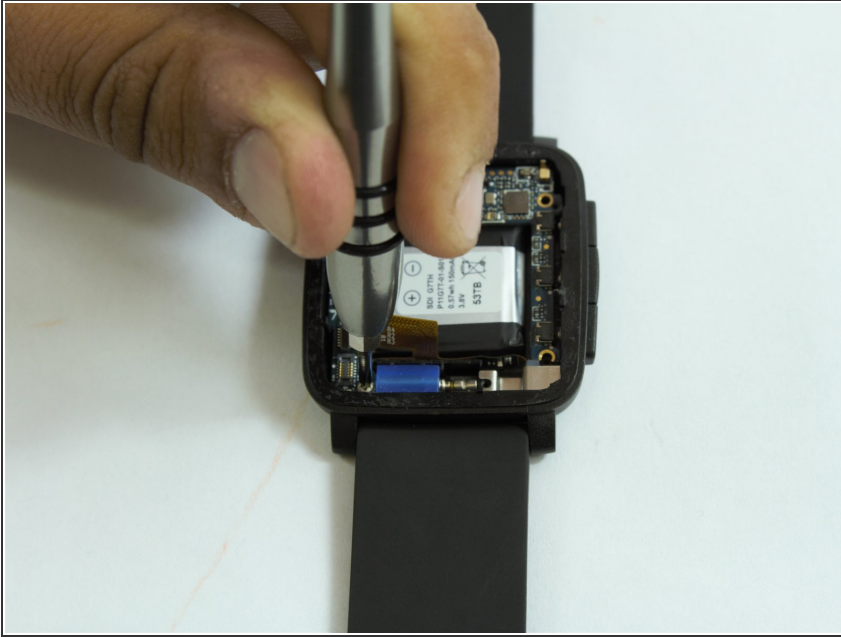
- Locate the three screws on the circuit board.
- Remove using the J000 Philips head screwdriver.

## Step 10



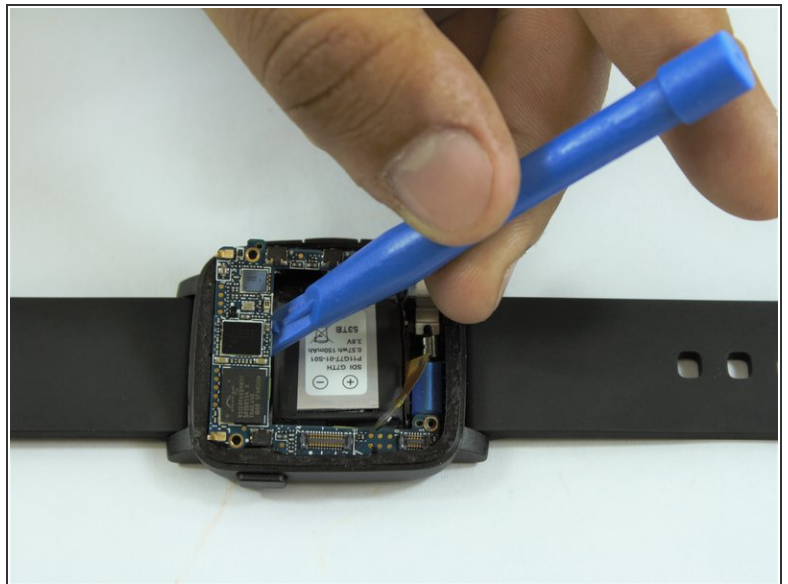
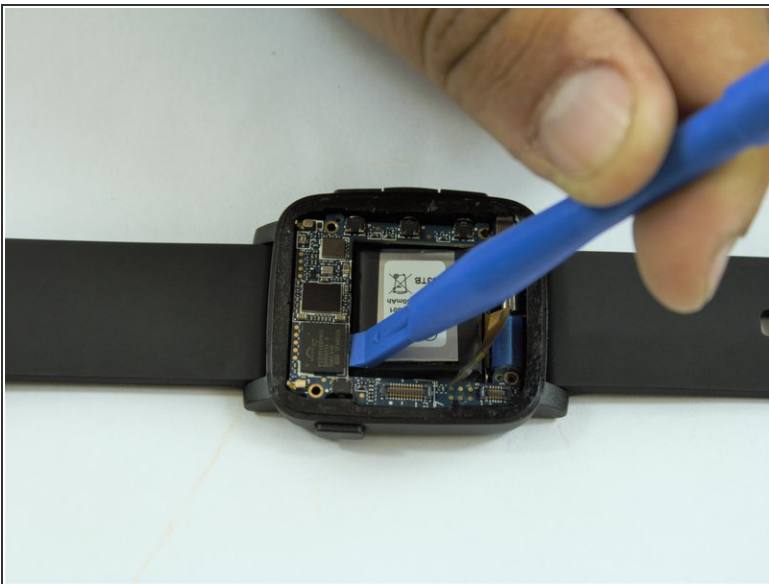
- Carefully disconnect the connector wire on the bottom left edge of the circuit board using a plastic opener tool.
- Move apart the connector to expose the fourth screw.

## Step 11



- Remove the final screw from the circuit board with a J000 Philips head screwdriver.

## Step 12



- Turn the watch to the side and use the plastic opening tool to lift up the circuit board.
- Remove the circuit board from the case.



To reassemble your device, follow these instructions in reverse order.