



# Pebble Time Screen Replacement

Replacement guide for the screen of the Pebble Time.

Written By: Saud Al-Malki



---

# INTRODUCTION

Replacement guide for the screen of the Pebble Time.



## TOOLS:

- [Metal Spudger](#) (1)
  - [iFixit Opening Tools](#) (1)
-

## Step 1 — Screen Cover



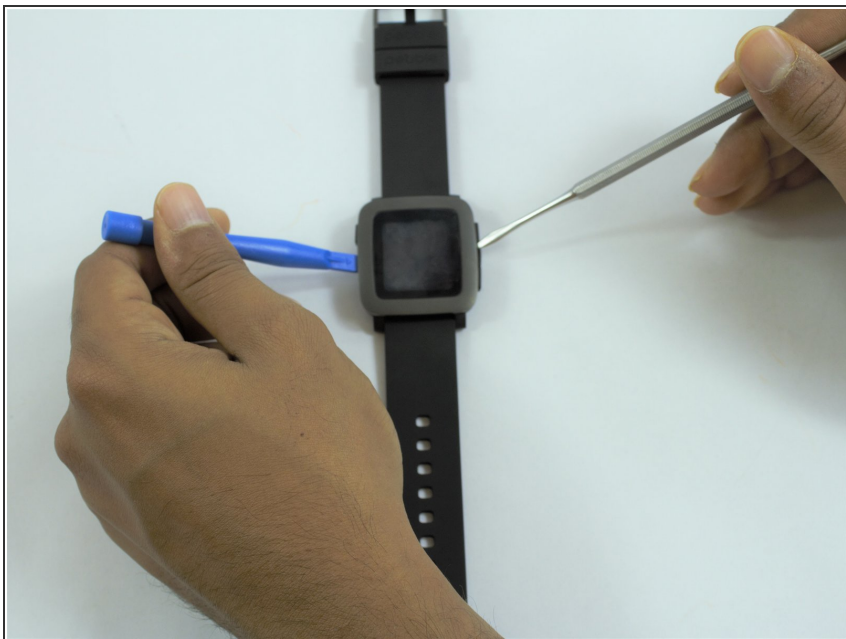
- Lay the watch flat on your workstation.

## Step 2



- Use the metal spudger to carefully pull apart the screen cover from the case.
- Replace the metal spudger with a plastic opening tool to hold the cover open.

### Step 3



- Use the metal spudger tool to carefully loosen the rest of the cover.

### Step 4



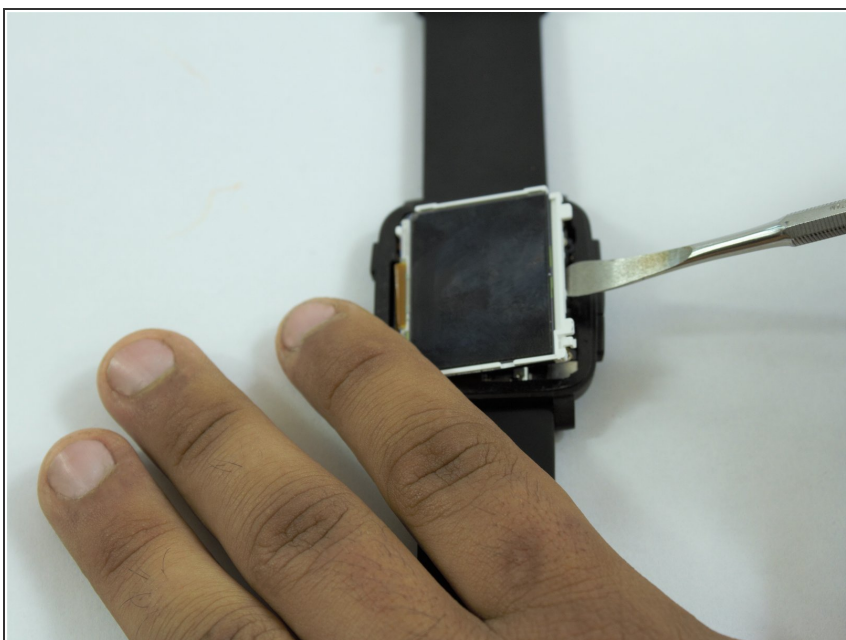
- Carefully, pull apart the cover with the plastic opening tool.

## Step 5 — Screen



- Insert metal spudger into the side of the screen shown in the picture.

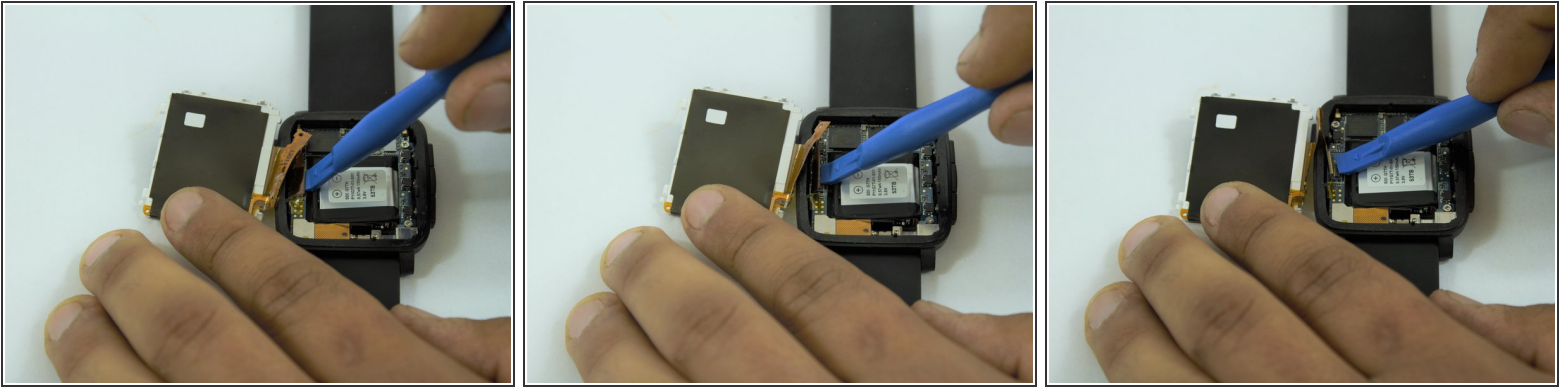
## Step 6



- Use the metal spudger to pry the screen up.



## Step 7



- Once screen is lifted, insert plastic opening tool between the screen connector and circuit board.
- Disconnect the screen from the circuit board.

To reassemble your device, follow these instructions in reverse order.