



Pentax Optio S4i Battery Replacement

Remove and install camera battery

Written By: Nicole Wong



INTRODUCTION

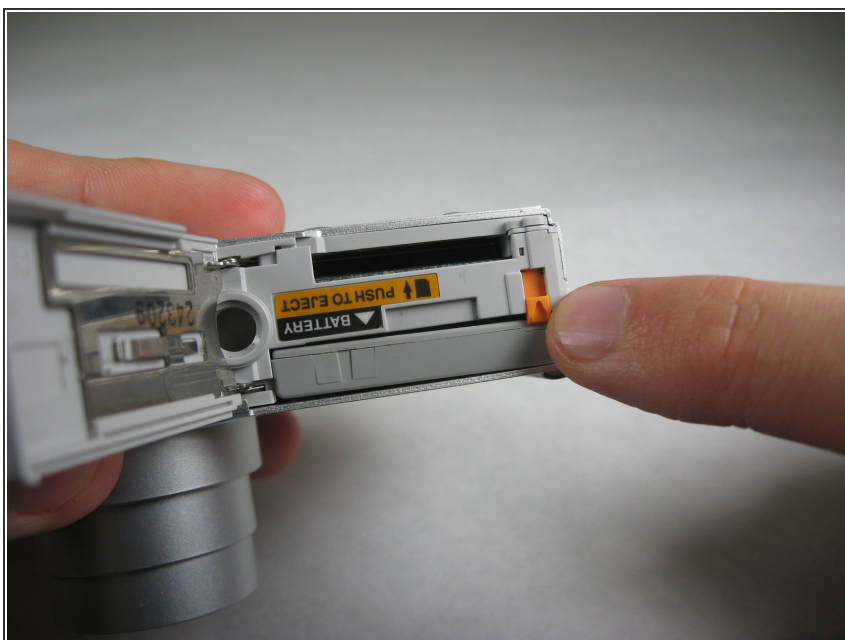
This guide will teach you how to properly remove and insert the camera's battery.

Step 1 — Battery



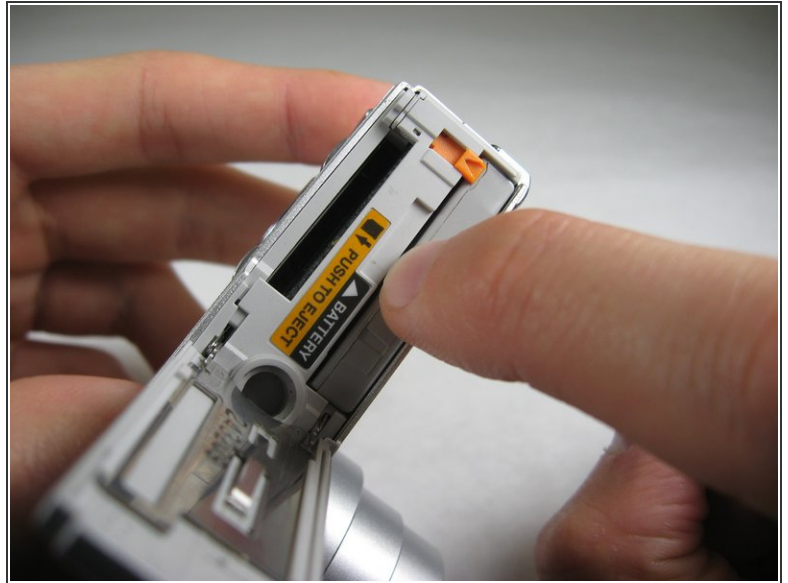
- Flip camera over to bottom side. Slide battery cover to the right and flip open.

Step 2



- Push small, orange lever up to release battery.

Step 3



- To reinsert battery, if necessary repeat Step 1. Insert battery so that the side of the battery with "CAUTION" below the black bar with an arrow faces the label "BATTERY". Make sure to push battery until small, orange lever holds battery in place. Close battery cover.