



Pentax Optio WG-1 GPS Teardown

The Pentax Optio WG-1 GPS is a 14 megapixel rugged waterproof digital camera with a 5x zoom lens. It also has a 2.7 inch LCD monitor display and is capable of outputting 720p HD video at 30 frames per second.

Written By: Brandon Berlew





TOOLS:

- [Phillips #0 Screwdriver](#) (1)
-

Step 1 — Pentax Optio WG-1 GPS



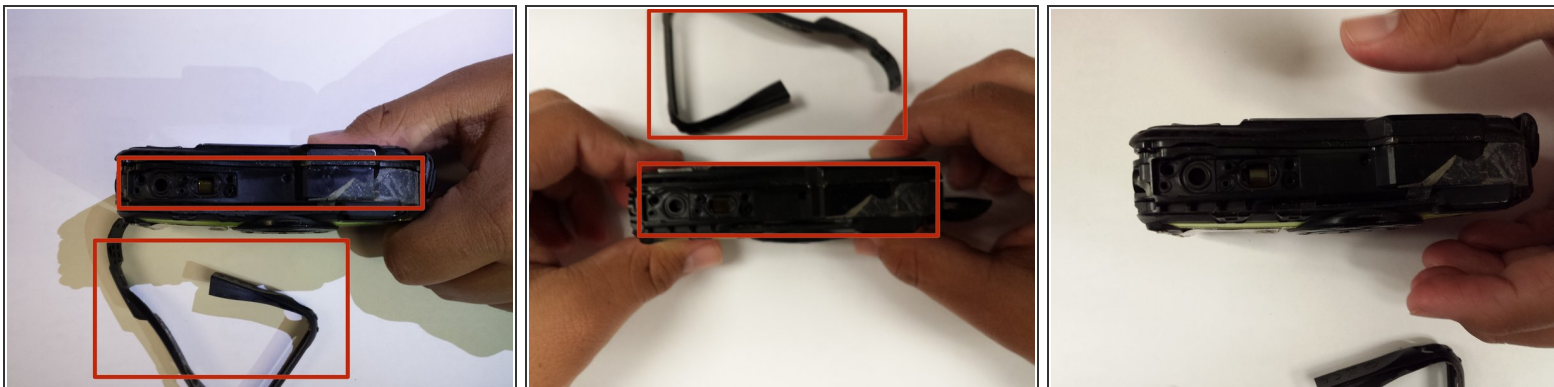
- Clean the device. You are able to rinse with under running water. It is recommended to ensure that you remove the battery and memory card before working with the device.
- Prepare a clean workstation and have your tool(s) ready.

Step 2



- Remove 4 Phillips 1/4 inch 00 screws around the border of the display with the screwdriver.

Step 3



- Remove the black rubber adhesive around the border of the device by peeling slowly.

Step 4



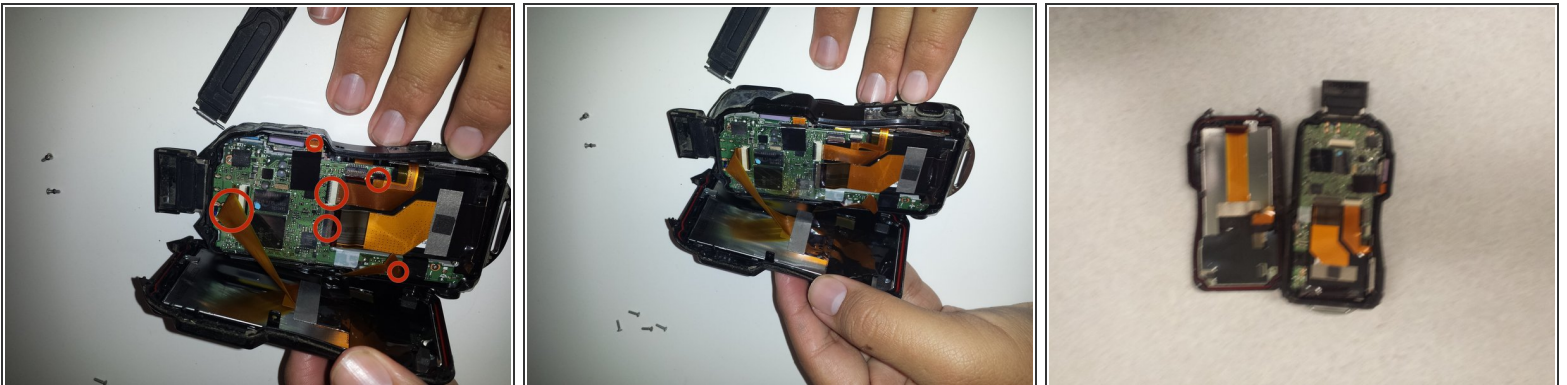
- Remove 2 Phillips 00 1/4 inch rubber sealed screws off the top of the camera.

Step 5



- Remove the display screen from the casing. When opening, the micro USB cover and the battery cover will fall out with a pin.

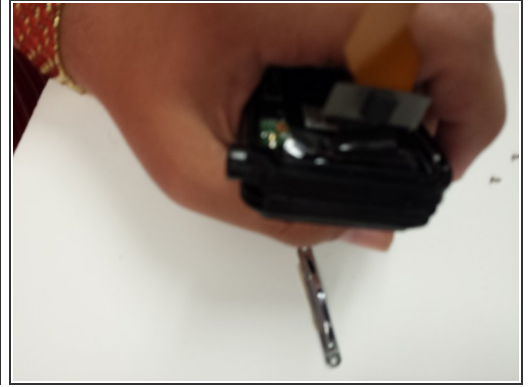
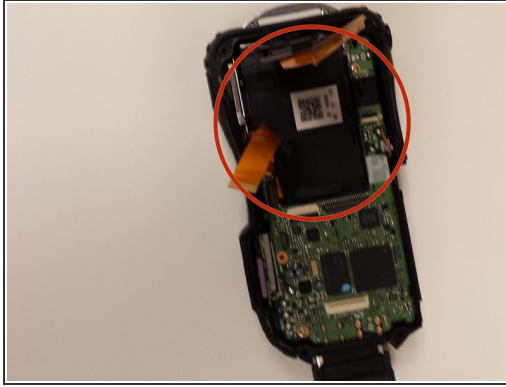
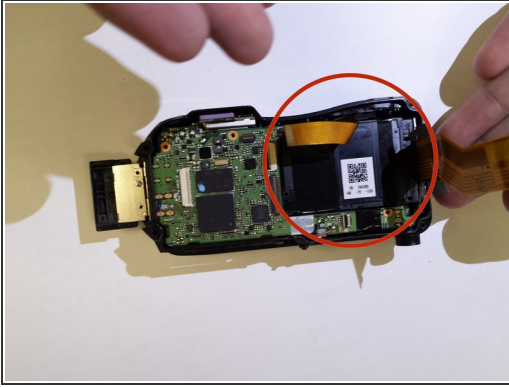
Step 6



- Remove all orange strips located on the motherboard and the LCD screen.

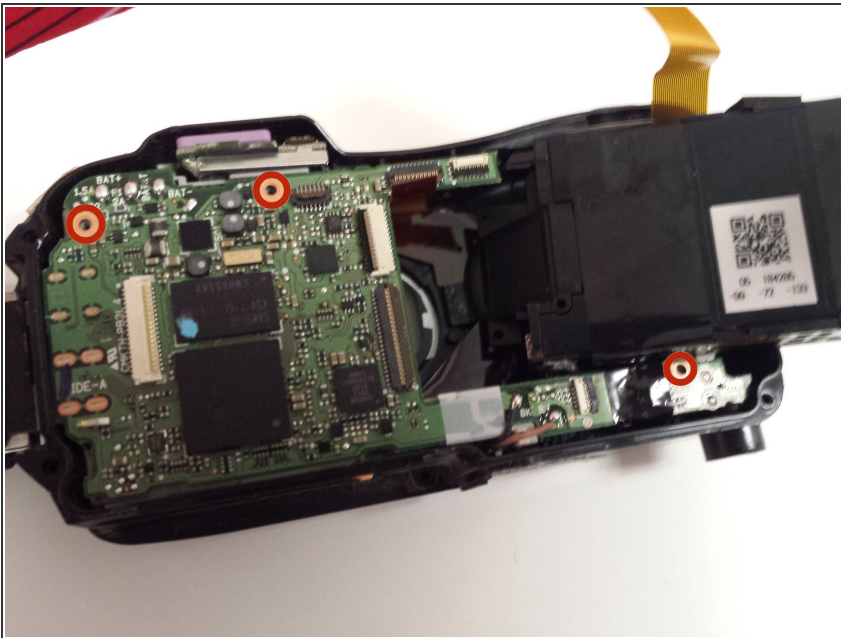
⚠ Lift black latches before removing the strips.

Step 7



- Remove the lens from the camera carefully. It is the black block held inside the casing.

Step 8



- Remove 3 Phillips 00 screws from the motherboard.

Step 9



- Remove 2 Phillips 00 screws from the mini USB bay.

Step 10



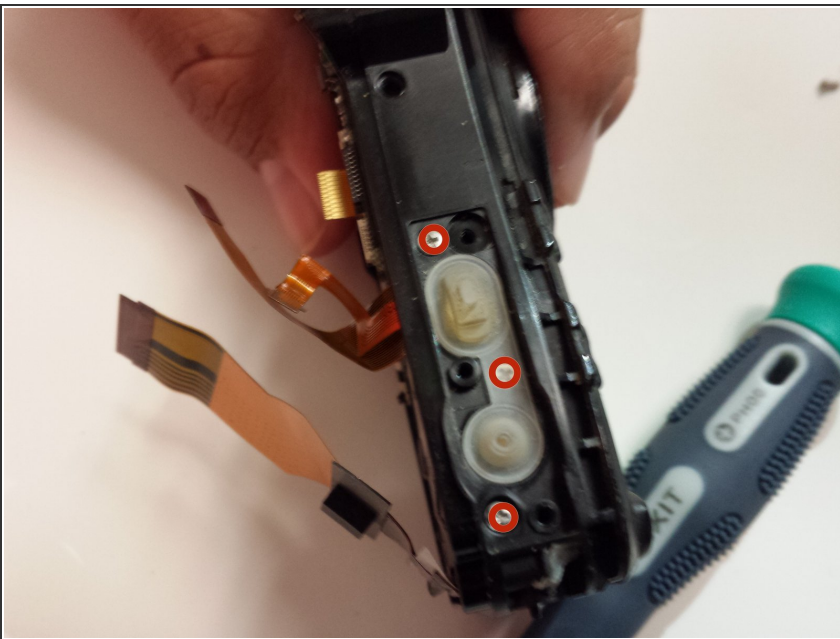
- Remove 2 Phillips 00 screws from the silver handle on the side of the camera.

Step 11



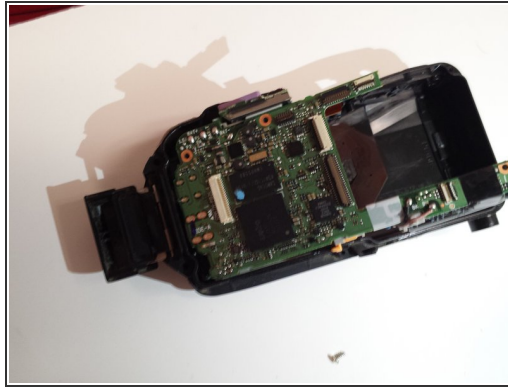
- Remove 3 Phillips 00 screws from the camera's photo capture button.
- After removing those screws, remove the plastic piece and buttons they secure.

Step 12



- Remove 3 Phillips 00 screws from the same location located under the camera's photo capture button.

Step 13



- Remove the motherboard from the housing.

To reassemble your device, follow these instructions in reverse order.