



Pentax Optio WG-2 Battery Compartment Door Replacement

Replace the battery cover of your Pentax Optio WG-2.

Written By: Matthew Bessette



INTRODUCTION

Use this guide to remove and replace a damaged battery cover on the Pentax Optio WG-2.



TOOLS:

- [JIS Driver Set](#) (1)
 - [Tweezers](#) (1)
 - [Phillips #000 Screwdriver](#) (1)
 - [Spudger](#) (1)
-

Step 1 — Back Case



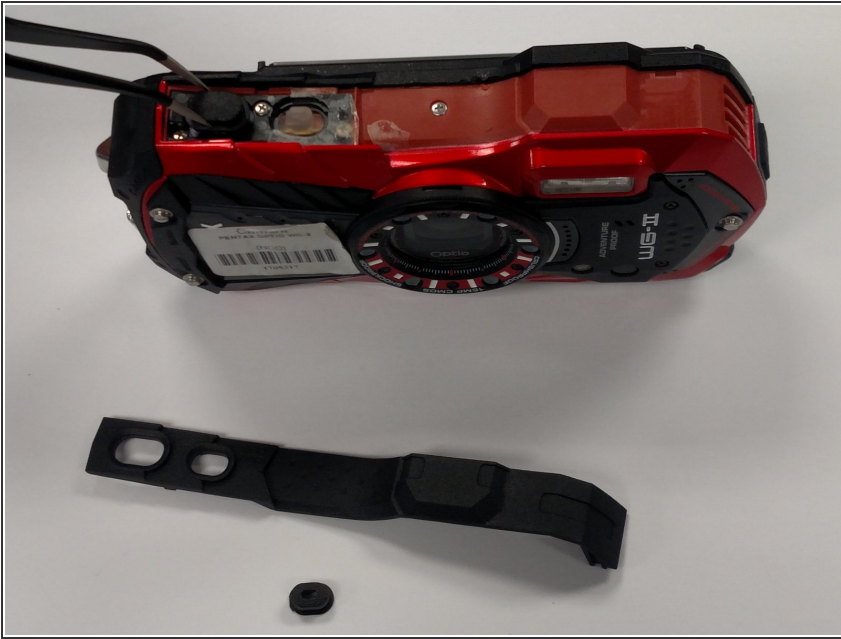
- Remove all four 1 mm JIS #00 screws from the back of the camera.

Step 2



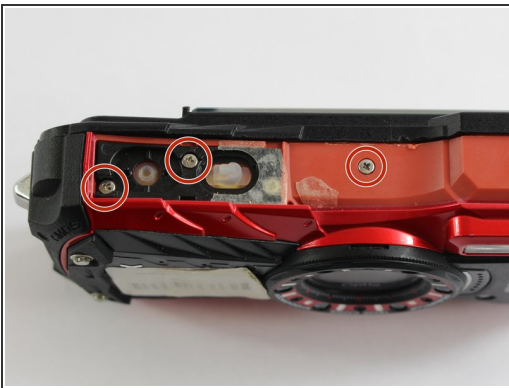
- Use your finger to peel the grip off the top of the camera.
 - For best results, start from the right side of the camera, opposite the buttons.
- ⚠ Once the grip is removed, you will most likely lose the water-tight seal.

Step 3



- Use the tweezers to remove the two buttons from the top of the camera.
- ⓘ The buttons may fall out while removing the grip.

Step 4




- Remove the three 1 mm JIS #000 screws from the top.
- Remove the 1 mm JIS #000 screw from the bottom.

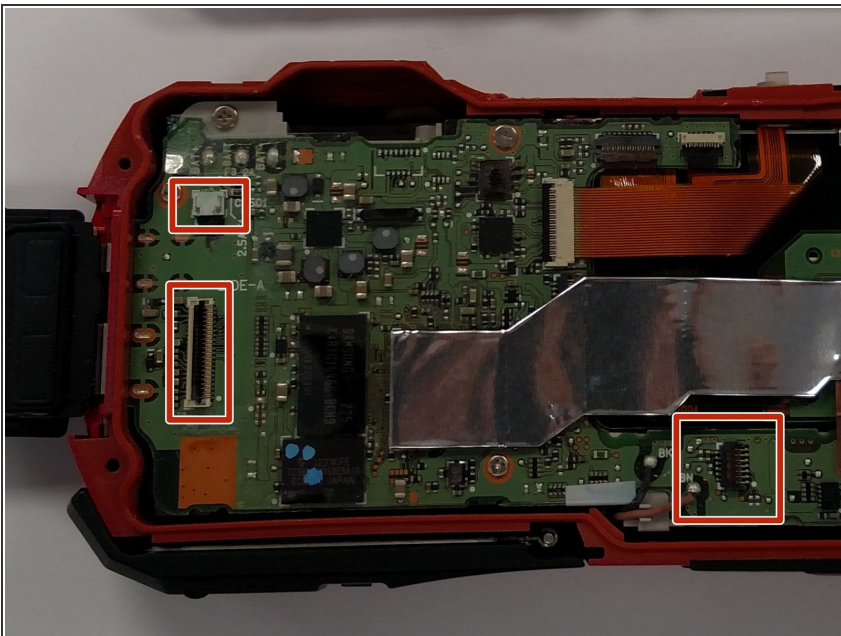
Step 5



- Carefully separate the back and the front of the camera.

 There are three ribbon cables connecting the two boards. Be careful not to tear them.

Step 6



- Use the tip of a spudger to flip up the small retaining flaps on the ribbon cable ZIF connectors.
- Carefully pull the ribbon cables out of their sockets.

Step 7 — Battery Compartment Door



- Lift the cover as you normally would if replacing battery.
 - Holding the camera with the lens facing away from you and the battery slot upward slide the cover towards the back of the camera.
- ⚠ There is a pin (3/4 of an inch long) that attaches the cover to the camera and it will come loose when the cover is removed.

To reassemble your device, follow these instructions in reverse order.