



# Pentax PZ-10 Back Cover Locking Switch Spring Replacement

This guide will show the 4 steps to accessing the back cover locking switch spring for replacement.

Written By: Ryan Su



## INTRODUCTION

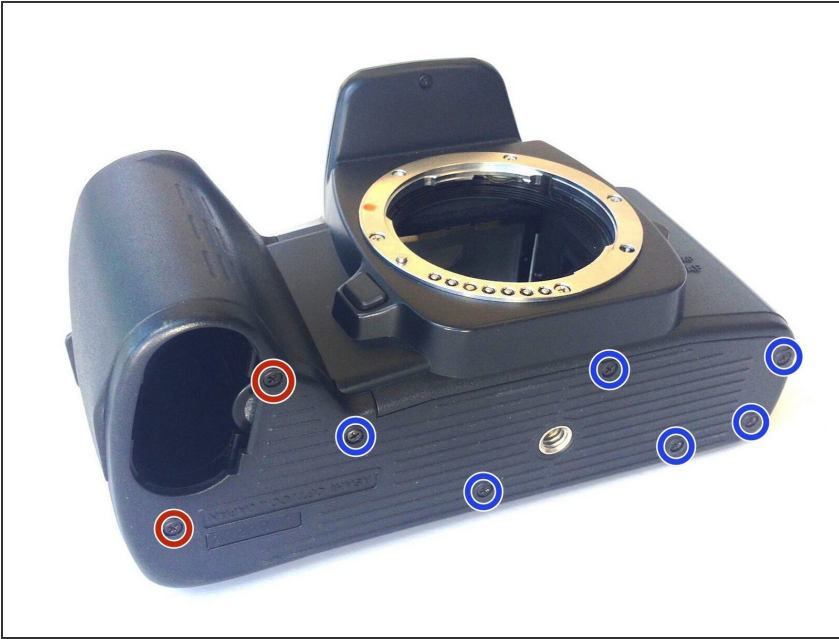
If the back cover of the Pentax PZ-10 won't lock in place, the spring that holds the door in place may need to be replaced.



### TOOLS:

- [iFixit Opening Tools](#) (1)
  - [64 Bit Driver Kit](#) (1)
-

## Step 1 — Removing the Bottom Cover



- With the lens face up and the bottom panel of the camera facing you, remove the two 7mm screws on the left using the J0 screwdriver.
- Remove the six 4.3mm screws in the middle and right of the panel using the J0 screwdriver.
- Pull off the bottom casing to remove.

## Step 2 — Removing Bottom Casing



- With the screws removed, the bottom casing should come off very easily by pulling on the casing.

### Step 3 — Removing the Back Cover



- ❗ Place the camera on its side so the lens is facing left.
- Press down on the locking switch on the side panel facing you.

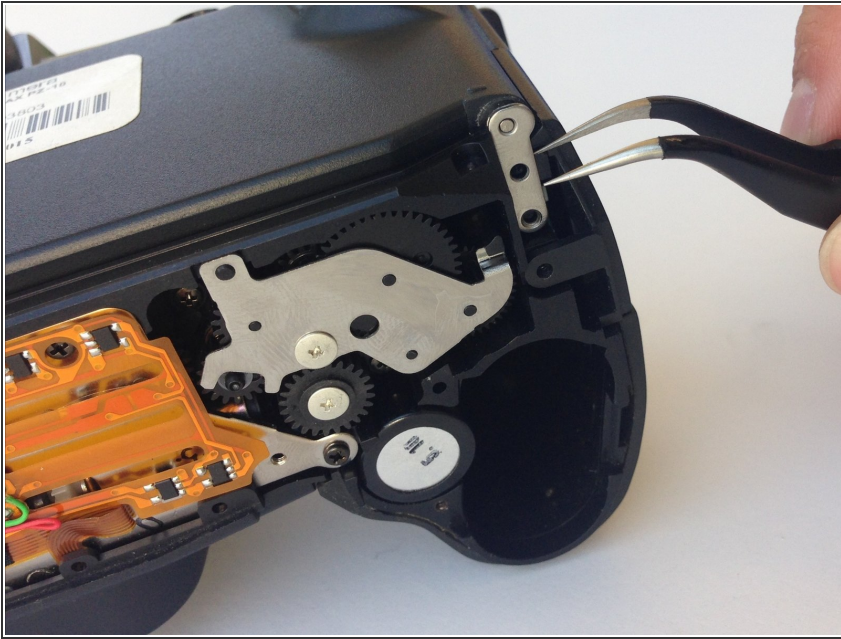
### Step 4



- With the door unlocked, rotate the device to access the bottom.



## Step 5



- Using a pair of tweezers, gently remove the metal tab securing the back door axle.

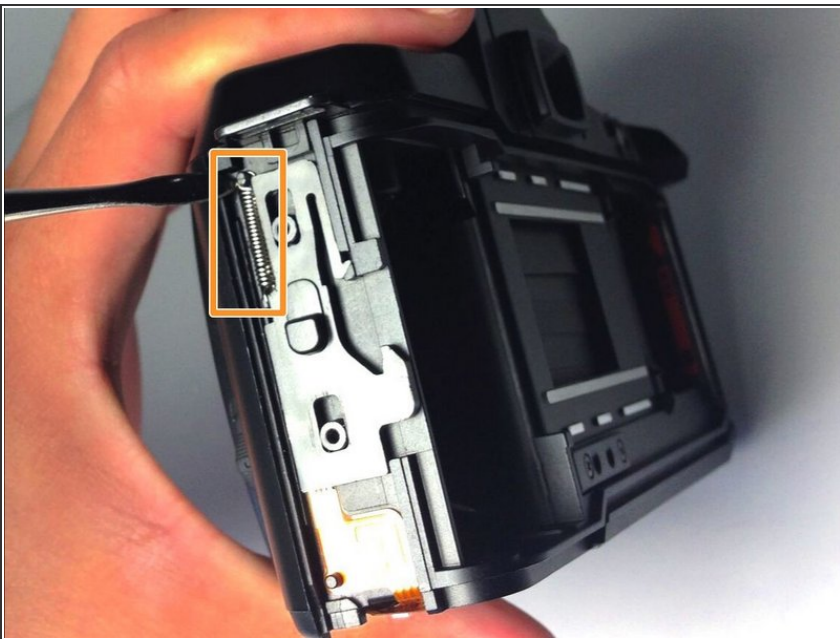
⚠ The door will come loose at this point, watch for any loose parts that may also come out.

## Step 6 — Removing the Side Panel



- Once the back cover is fully removed, remove the two 4.35mm screws attaching the cover of the unlocking switch, and remove the plate.


## Step 7 — Removing the Spring



- Locate the spring at the upper left corner of the face, and pull the rings of the spring off of the pins to

---

remove it using plastic opening tools.

 You are now ready to replace the spring.

---

To reassemble your device, follow these instructions in reverse order.