



# Pet Treat Launcher Teardown

A pet treat launcher is disassembled to see how it is constructed and how it works.

Written By: Isaiah Rogers



---

## INTRODUCTION

The device being torn down today is a spring action (no batteries required) dog kibble launcher. A chamber can be loaded with a handful of small (~3/8" - 1/2" diameter) round dog food treats, then shot into the air, one by one, by this toy-gun style launcher. Both the concept and execution of this toy design are flawed for several reasons; however, the toy functions fairly well and kids love it.



### TOOLS:

- [Phillips #0 Screwdriver](#) (1)
-

## Step 1 — Pet Treat Launcher Teardown



- First, the clear hopper is removed by twisting until two tabs each fall through a groove. This bulb retention design allows for simple, intuitive reloading.

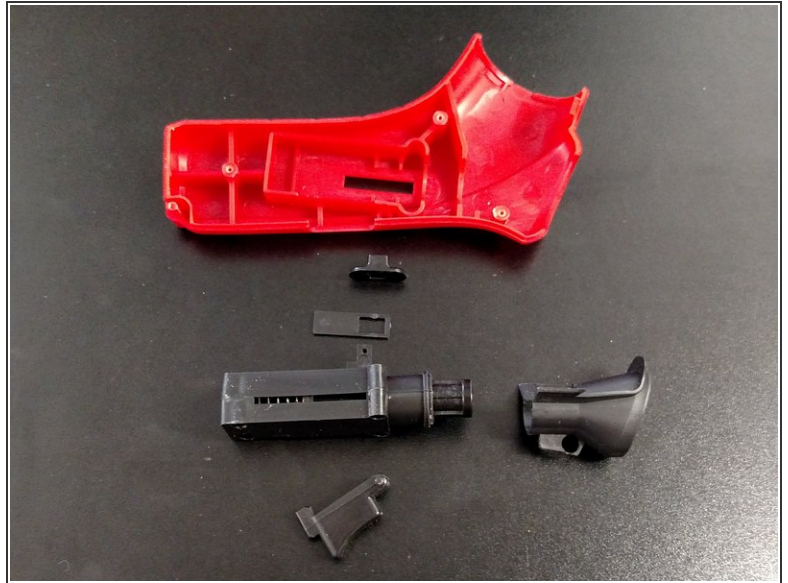
## Step 2



- 3 phillips head-screws fasten two halves of the red plastic body together.
- The red body pops apart after the screws are removed.



### Step 3



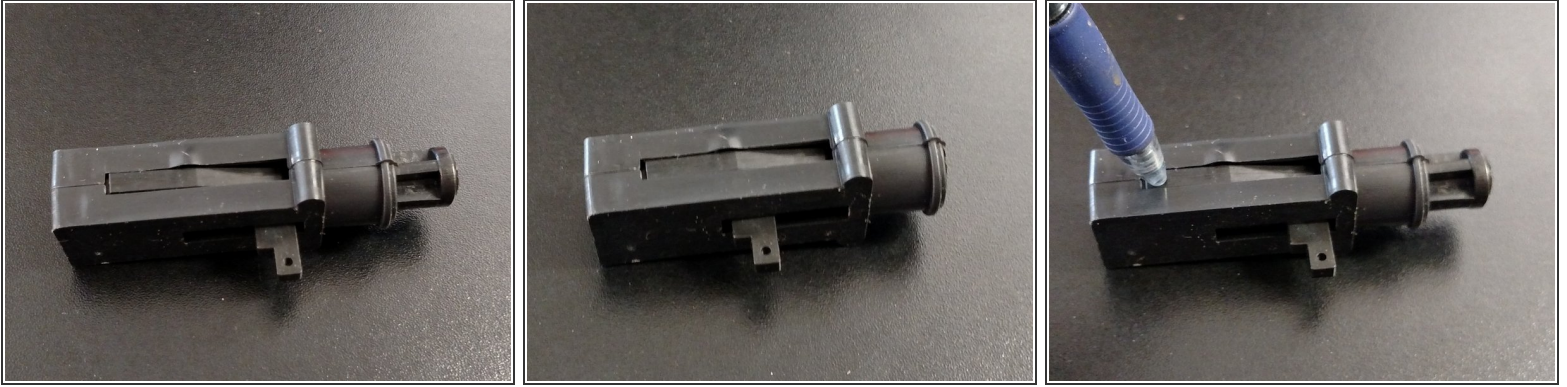
- The red body contains internal support ribs which make it mechanically sturdy.
- The black internal pieces are held firmly in place by the red plastic body.
- The black pieces--trigger, cannon, cocking thumb tab, dust cover, and launch barrel/cone--all simply slide out by hand.

### Step 4



- Exploded view of the pet treat launcher.

## Step 5



- The cannon is a simple and sturdy assembly (image 1).
- The tab, protruding out of the assembly at the bottom of the picture, pulls the launch pad back until it latches into place (image 2). The launch spring is now loaded and the cannon ready to fire.
- The latch tab (long slender groove on top of the assembly) can then be pushed to fire the cannon. Typically this is accomplished by pulling the trigger, but here it is shown with a pen tip (image 3).