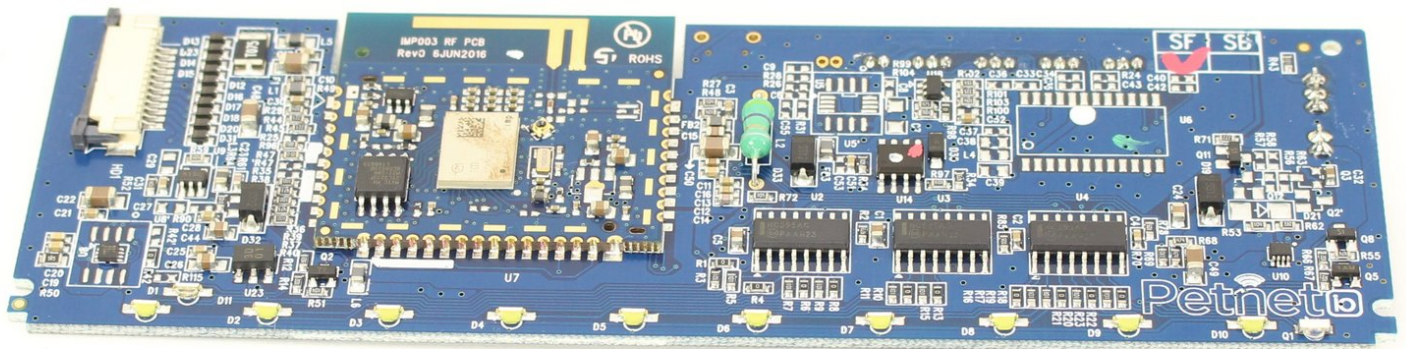




Petnet SmartFeeder SF10E Motherboard Replacement

Replace your motherboard to access electrical components of your Petnet SmartFeeder SF10E.

Written By: Travis Lamb



INTRODUCTION

The motherboard is fairly simple to remove. No special tools are needed besides a screwdriver to open up the SmartBowl. Be careful when handling the motherboard because the components on it are very delicate.



TOOLS:

- [Tweezers](#) (1)
 - [Phillips #1 Screwdriver](#) (1)
 - [Spudger](#) (1)
-

Step 1 — Battery



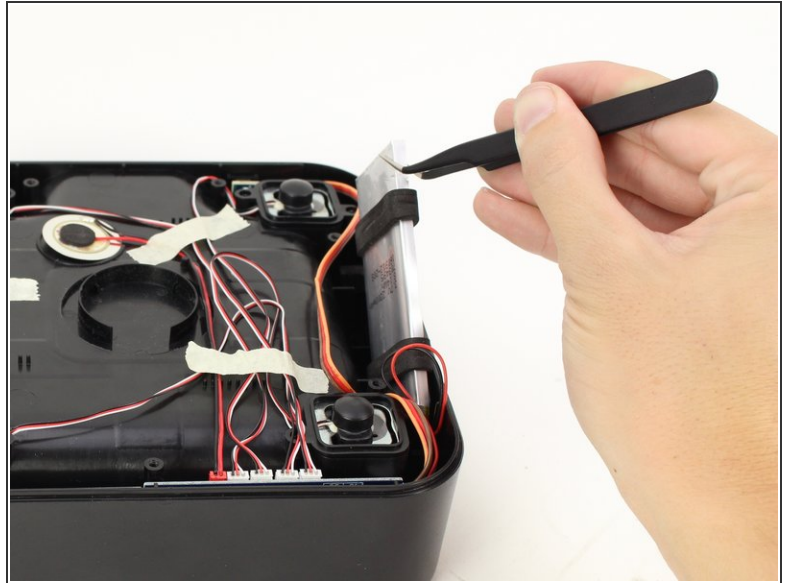
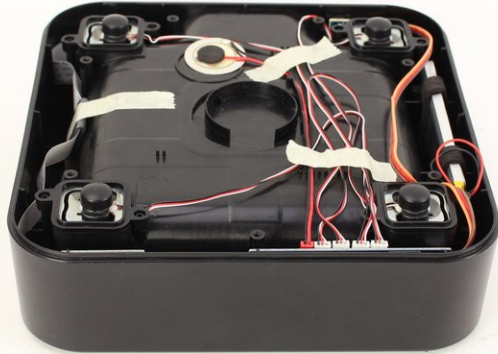
- Eject the SmartBowl by pressing the button located at the front of the SmartFeeder base.
- Remove the metal tray by using both hands and pulling out the bowl towards you.

Step 2



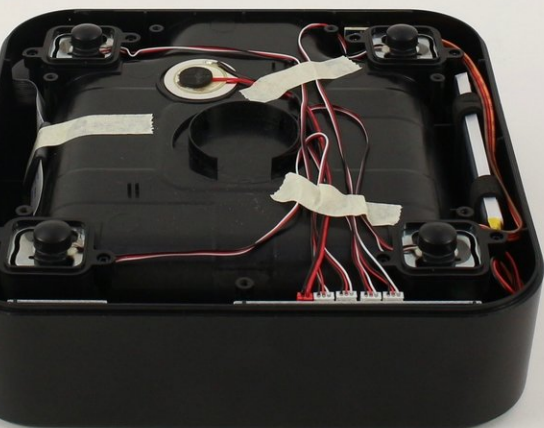
- Turn the bowl tray side down by using both hands.
- Remove seven 11 mm screws by using the Phillips #1 screwdriver.

Step 3



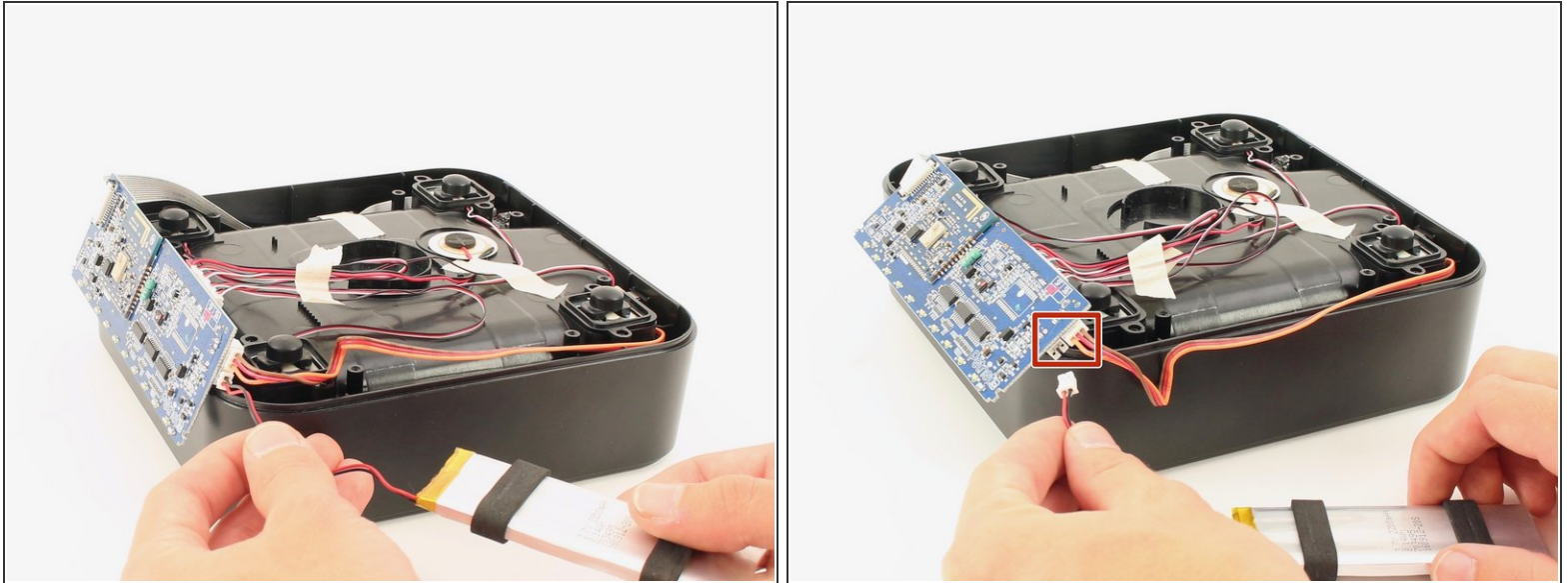
- Take the battery out of the SmartBowl with tweezers, avoid pulling on any wires.
- ⓘ Hold the SmartBowl down using one hand while using the other hand to remove the battery.

Step 4



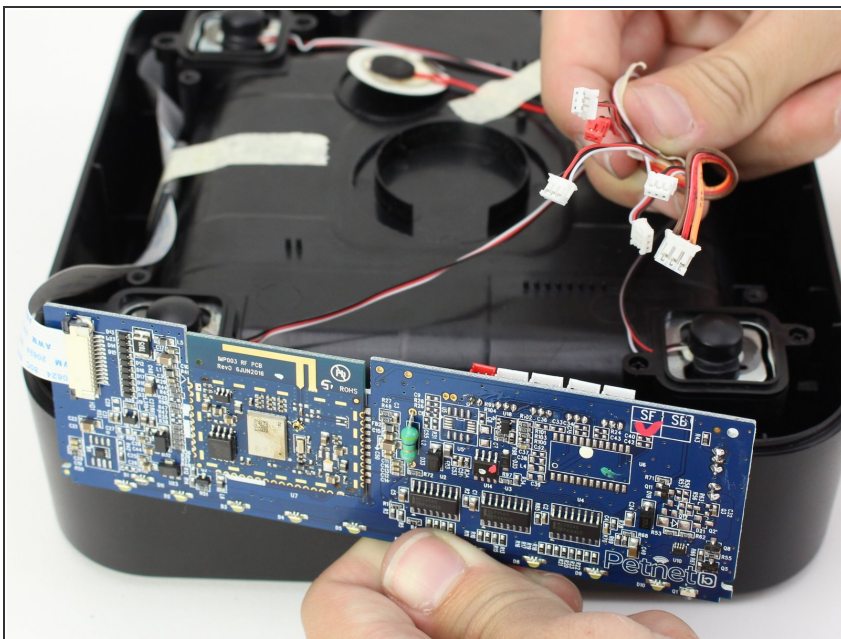
- Remove the tape, closest to the four white connectors, with your hands.
- ☑ Keep the wires attached to the tape for easy reassembly.

Step 5



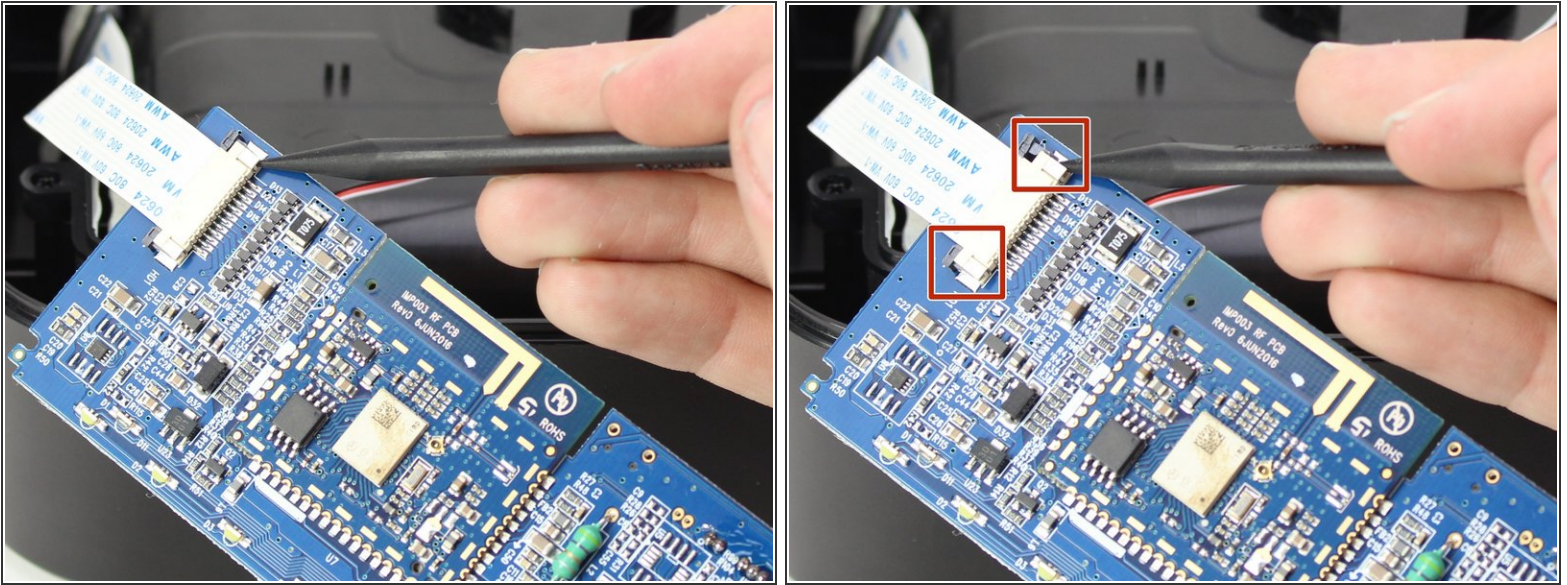
- Trace the wires with your hands from the battery to the motherboard.
 - Detach the three-prong connector between the battery and the motherboard by pulling the white connectors with your hands.
- ⚠ Hold on to the sockets on the motherboard or you could accidentally pull off the entire assembly.

Step 6 — Motherboard



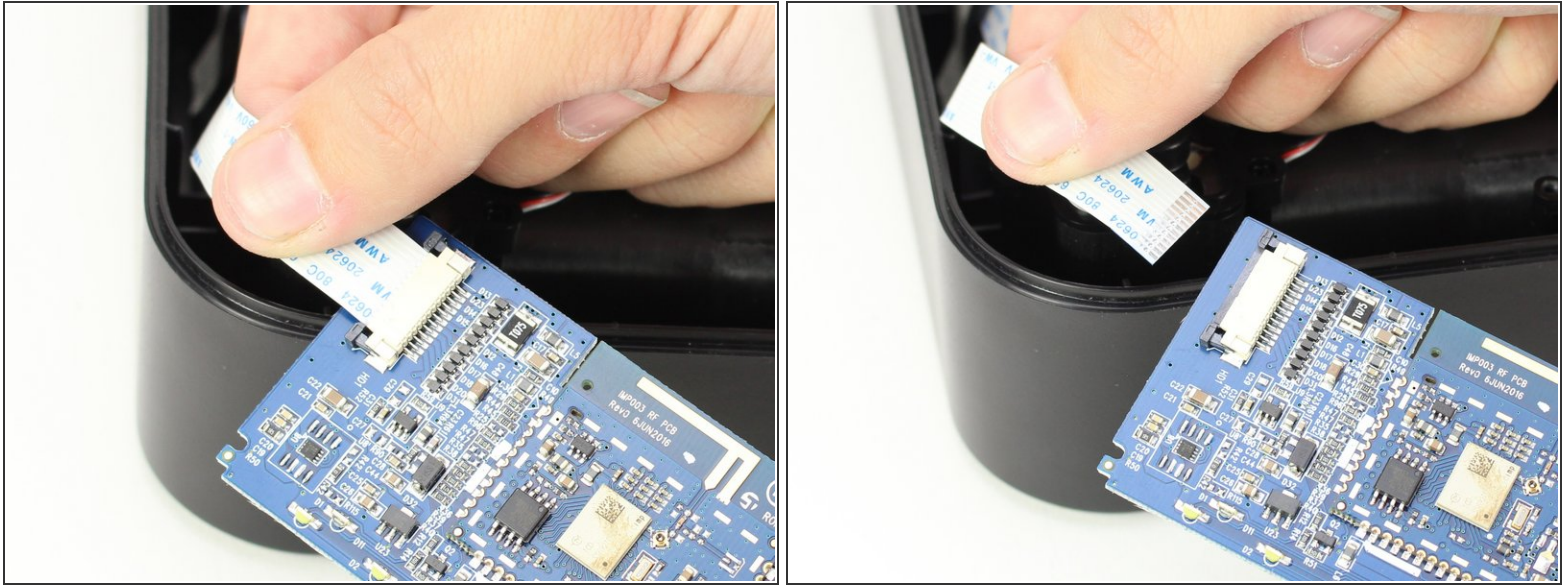
- Remove the remaining 3-prong connectors by carefully pulling outwards.
- ⚠ Hold on to the sockets on the motherboard or you could accidentally pull off the entire assembly.

Step 7



- Push both small gray pieces next to the ribbon connector towards the ribbon to put them in the “open” position using the nylon spudger.

Step 8



- Remove the ribbon connector from its slot by pulling on it with a couple fingers.
- ⚠ The ribbon should come out easily with the gray pieces in the "open" position. Do not use too much force with the ribbon or it could be damaged.
- 👉 Make sure the gray pieces are in the "open" position when you reassemble the ribbon connector or the connector will not go into its slot. Once the connector is in the slot, slide the gray tabs back down into the "closed" position

To reassemble your device, follow these instructions in reverse order.