



Philips Bluetooth adapter AEA2700 Teardown

How to open the device and what you'll find inside.

Written By: RFischer



INTRODUCTION

How to open the device and what you'll find inside.



TOOLS:

- [Pro Tech Toolkit](#) (1)
-

Step 1 — Philips Bluetooth adapter AEA2700 Teardown



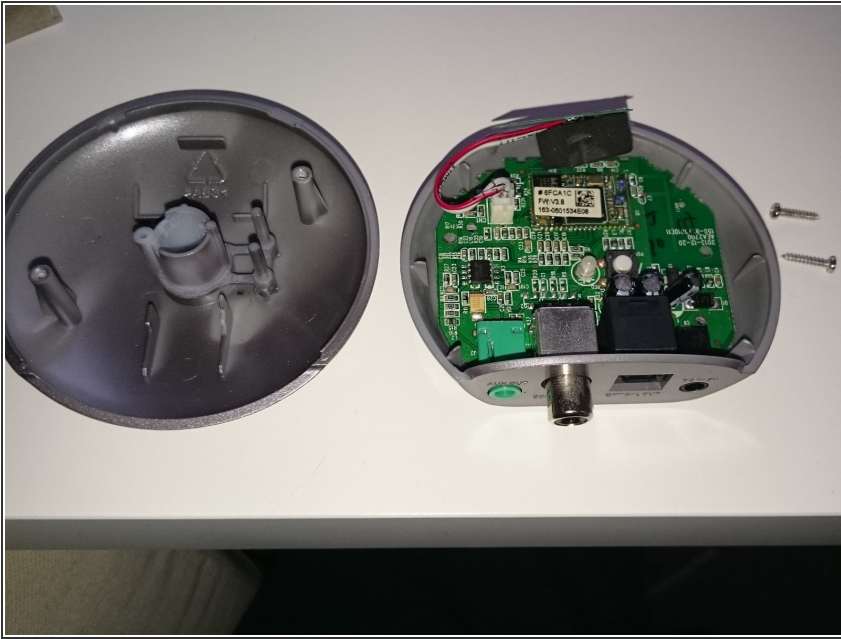
- here you can see the view from the top, the bottom and the backface - device is really tiny: only 7,5cm in diameter!

Step 2



- Remove 2 of the rubbers on the bottom side - you'll find 2 screws afterwards>> unscrew them ;)

Step 3



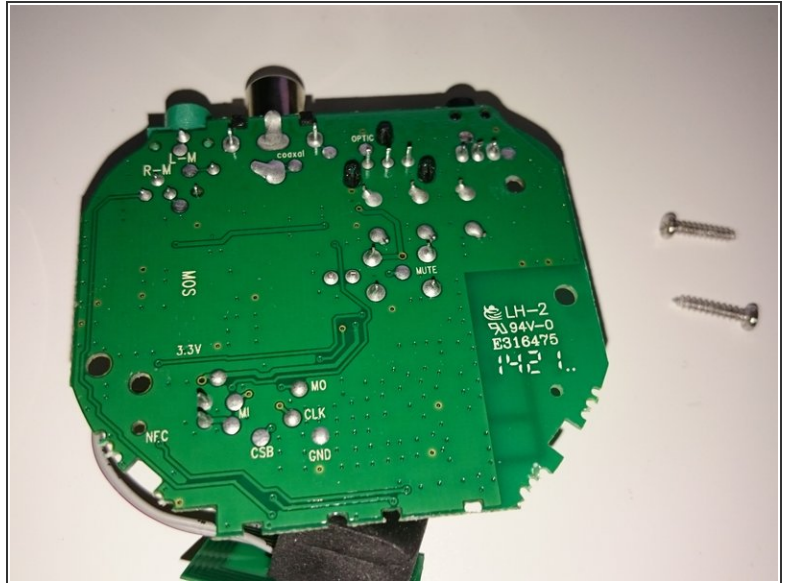
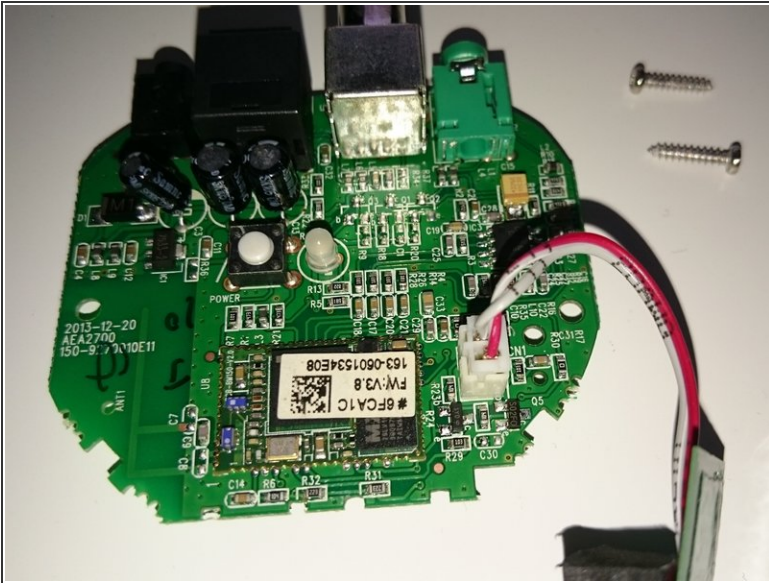
- now simply remove the top cover.

Step 4



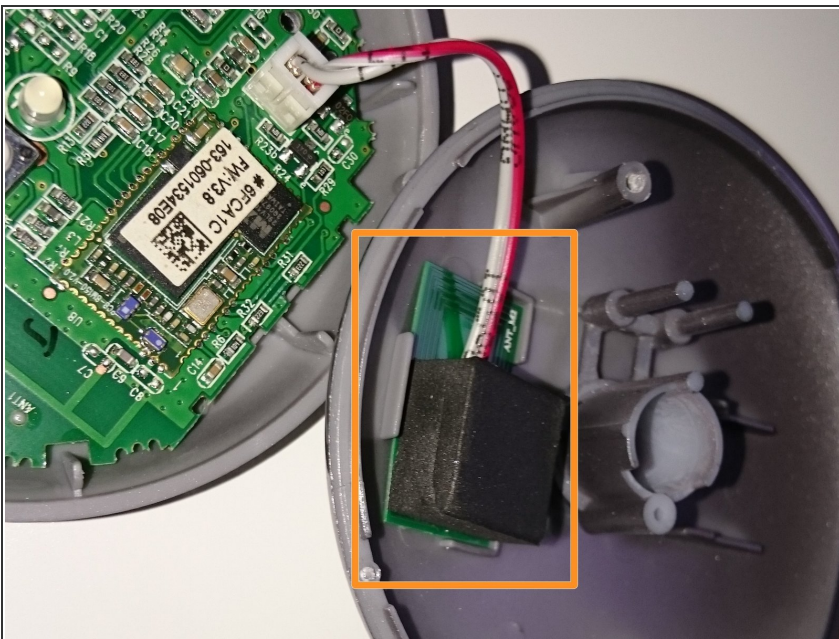
- there's only one external component connected by cable: the NFC tag
- it's easily possible to remove the circuit
- lift it on the front side of the device
- and pull it this direction - it helps to push at the cinch connector!

Step 5



- Front- and backview of the circuit

Step 6



- when reassembling take care to stick the NFC tag to the correct location in the cover