



# Philips DC320 37 Connector Replacement

This guide outlines how to remove and install the iPod/iPhone connector for the Philips DC320/37.

Written By: Greg Lane



# INTRODUCTION

Follow the procedure outlined in this guide to remove and install a broken iPhone/iPod connector.



## TOOLS:

- [Phillips #00 Screwdriver](#) (1)
  - [Phillips #2 Screwdriver](#) (1)
  - [Spudger](#) (1)
-

## Step 1 — Bottom Panel



- Pry off the four white feet with the pointed end of the spudger

## Step 2



- Unscrew the four 15.5 mm Phillips #2 screws that hold the bottom panel to the dock.



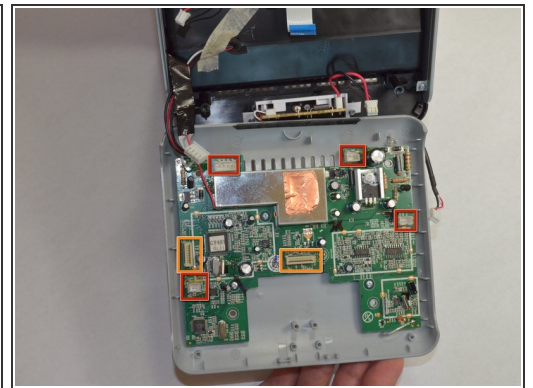
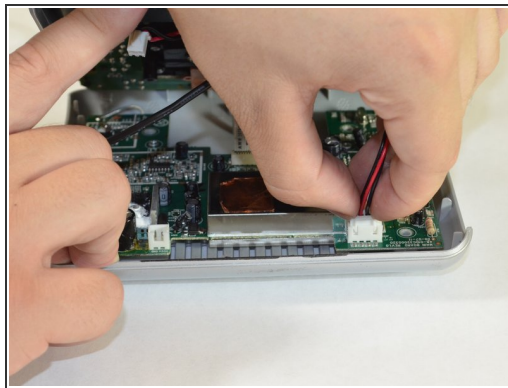
### Step 3



- Use the flat end of the spudger to pry the lid off from the two connectors holding it to the body of the dock.

⚠ The connectors on the panel are fragile and may break.

### Step 4



- Carefully pull up and out the four electrical connectors and the two ribbon connectors connecting the bottom panel and the dock.

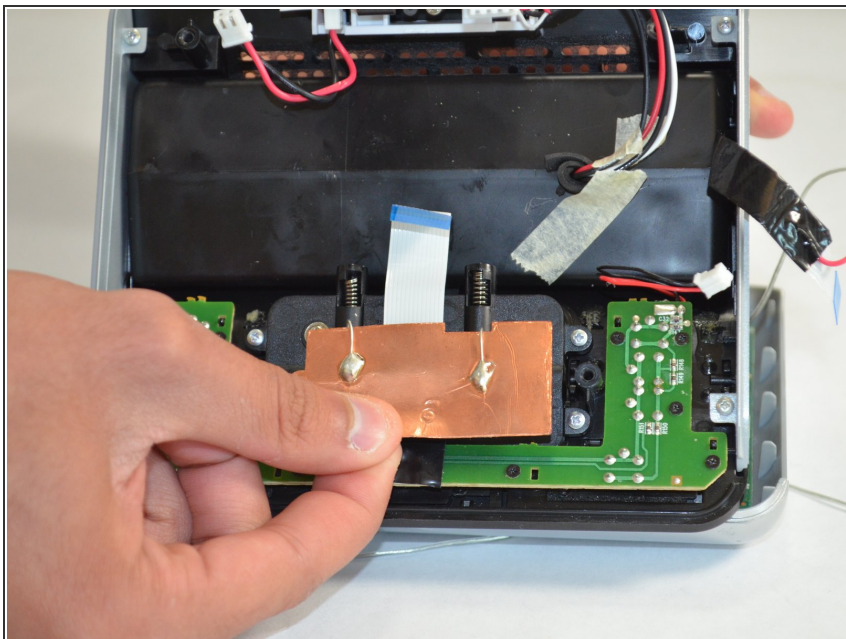
- Electrical Connectors

- Ribbon Connectors

⚠ The cables do not have a lot of slack in them. Be careful not to break the connectors.

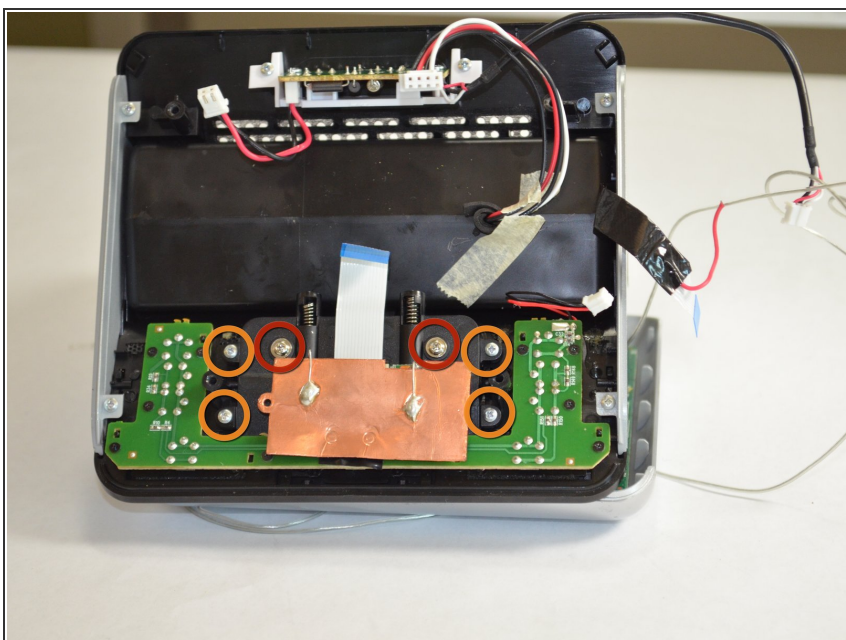
⚠ One wire is soldered onto the bottom panel. Be careful not to break this bond.

## Step 5 — Connector



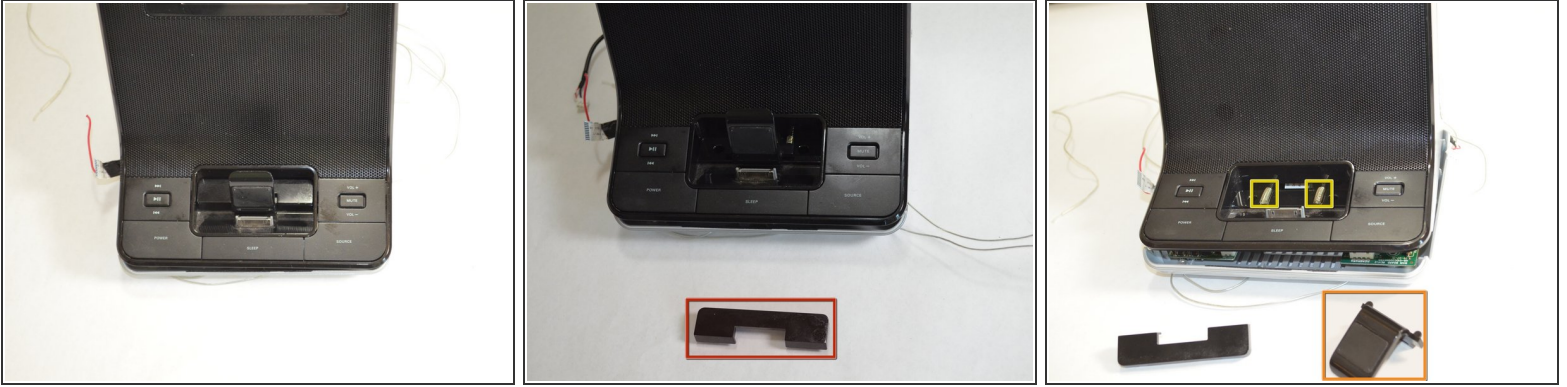
- Pull the copper plate out of the way of the two Phillips #00 screws in the middle of the connector.

## Step 6



- Unscrew the two 7 mm Phillips #00 screws holding the connector together.
- Unscrew the four 5 mm Phillips #00 screws holding the connector to the dock

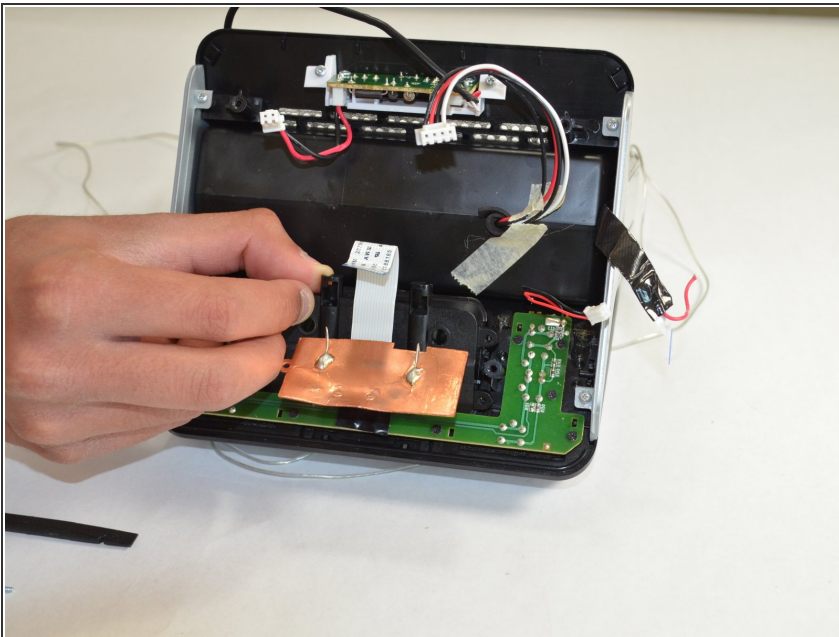
## Step 7



**i** Turn the dock so that you are looking at the front of the dock.

- Pull out the black U-shaped piece.
- Pull out the iPhone/iPod support cradle.
- Pull out the two springs.

## Step 8



- i** Turn the dock so that you are looking at the bottom of the dock.
- Pop out the black connector frame and attached circuit board from the body of the dock.

To reassemble your device, follow these instructions in reverse order.

