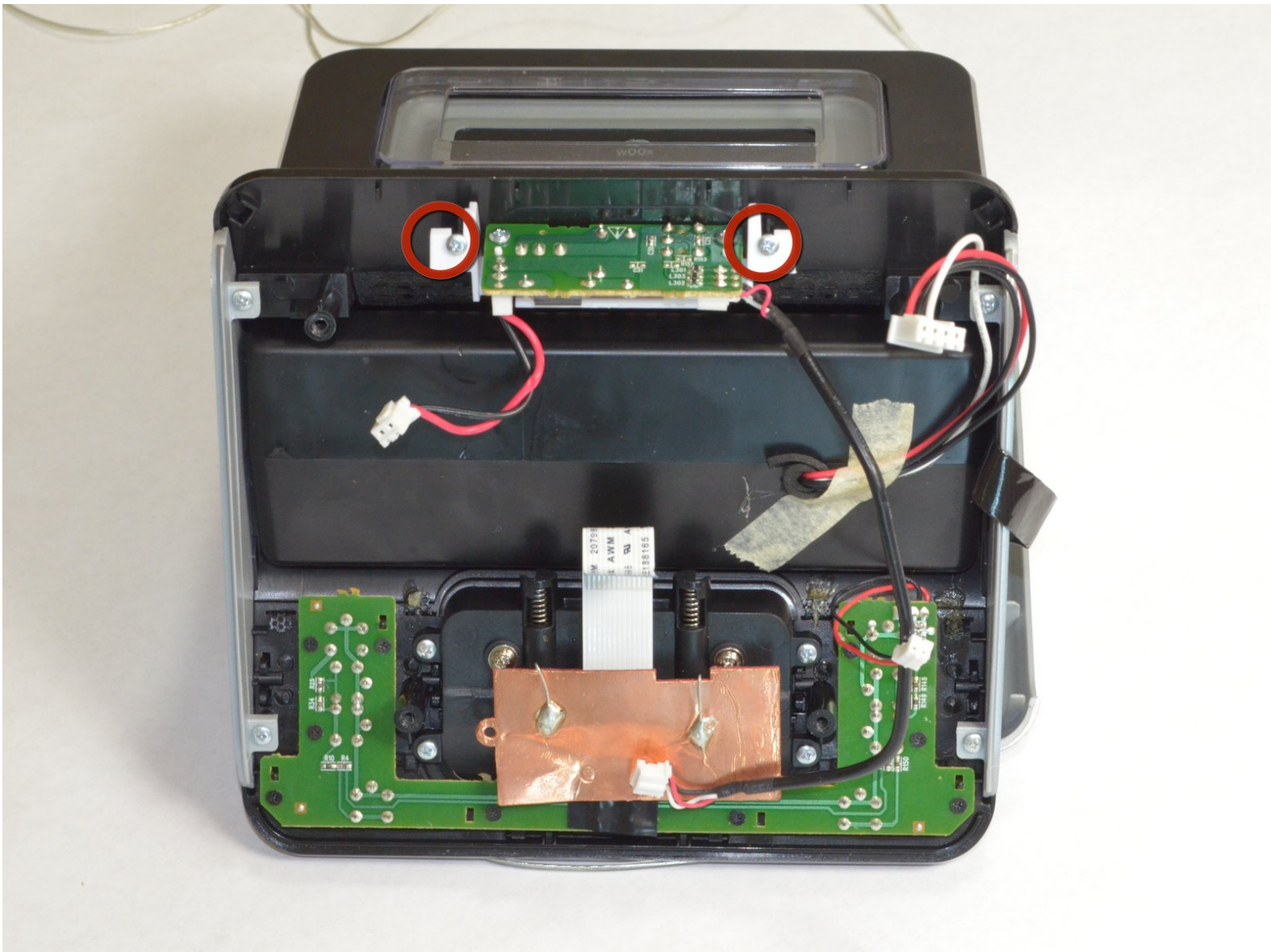




Philips DC320 37 Headphone or Power Jack Replacement

This guide outlines how to remove and install the headphone or power jack for the Philips DC320/37.

Written By: Graham Rolph



INTRODUCTION

Follow the procedure outlined in this guide to remove and install a broken audio or power jack.



TOOLS:

- [Phillips #00 Screwdriver](#) (1)
 - [Phillips #2 Screwdriver](#) (1)
 - [Spudger](#) (1)
-

Step 1 — Bottom Panel



- Pry off the four white feet with the pointed end of the spudger

Step 2



- Unscrew the four 15.5 mm Phillips #2 screws that hold the bottom panel to the dock.

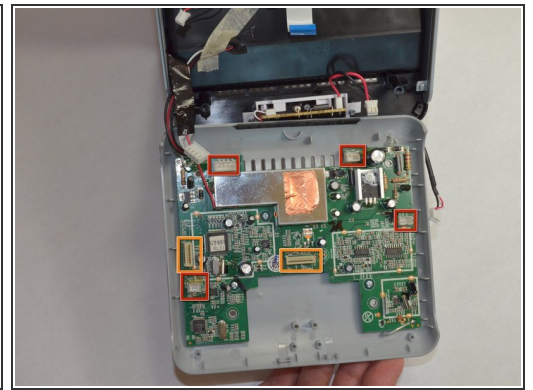
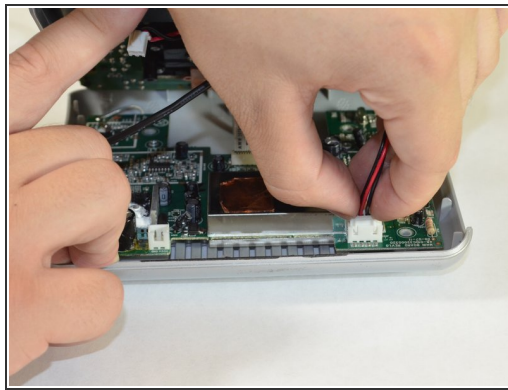
Step 3



- Use the flat end of the spudger to pry the lid off from the two connectors holding it to the body of the dock.

⚠ The connectors on the panel are fragile and may break.

Step 4



- Carefully pull up and out the four electrical connectors and the two ribbon connectors connecting the bottom panel and the dock.

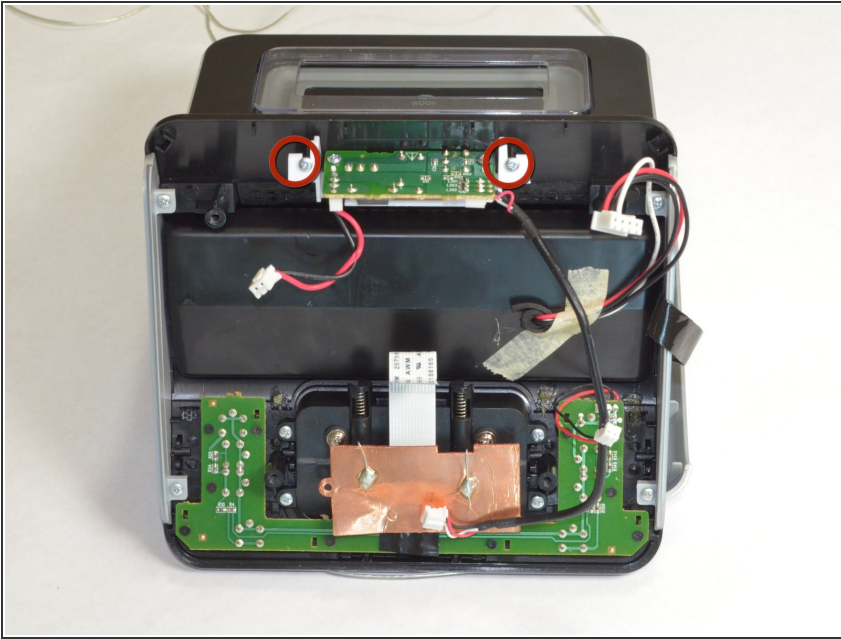
- Electrical Connectors

- Ribbon Connectors

⚠ The cables do not have a lot of slack in them. Be careful not to break the connectors.

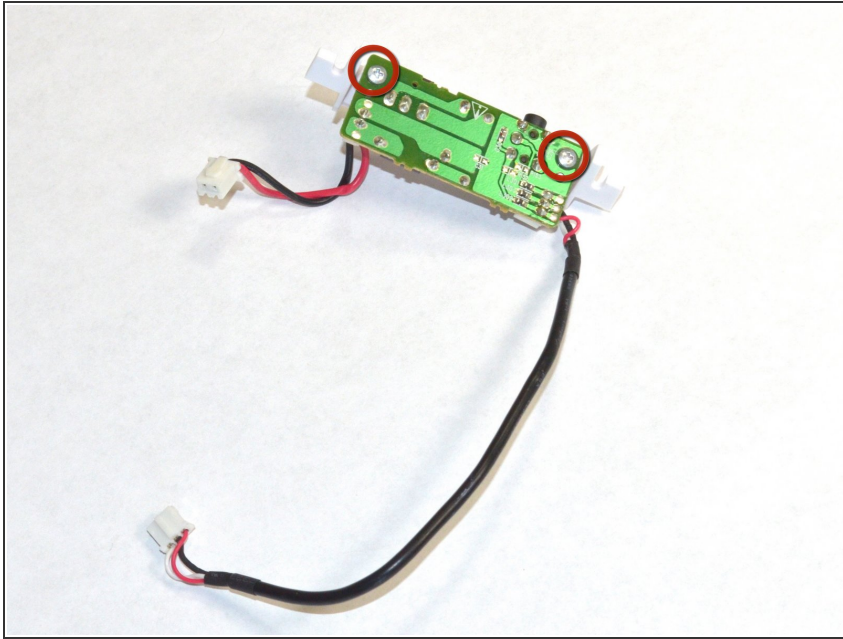
⚠ One wire is soldered onto the bottom panel. Be careful not to break this bond.

Step 5 — Headphone or Power Jack



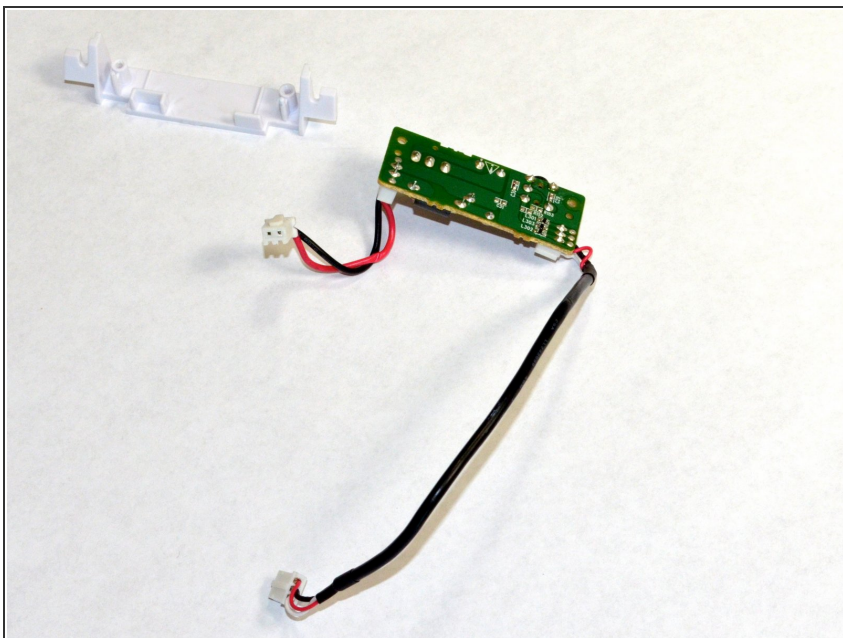
- Unscrew the two 5 mm Phillips #00 screws attaching white support bracket to the body of the device.

Step 6



- Unscrew the two 5 mm Phillips #00 screws from green Headphone/Power electronics board to detach from white support bracket.

Step 7



- Separate the white support bracket from the headphone/power electronics board.

To reassemble your device, follow these instructions in reverse order.