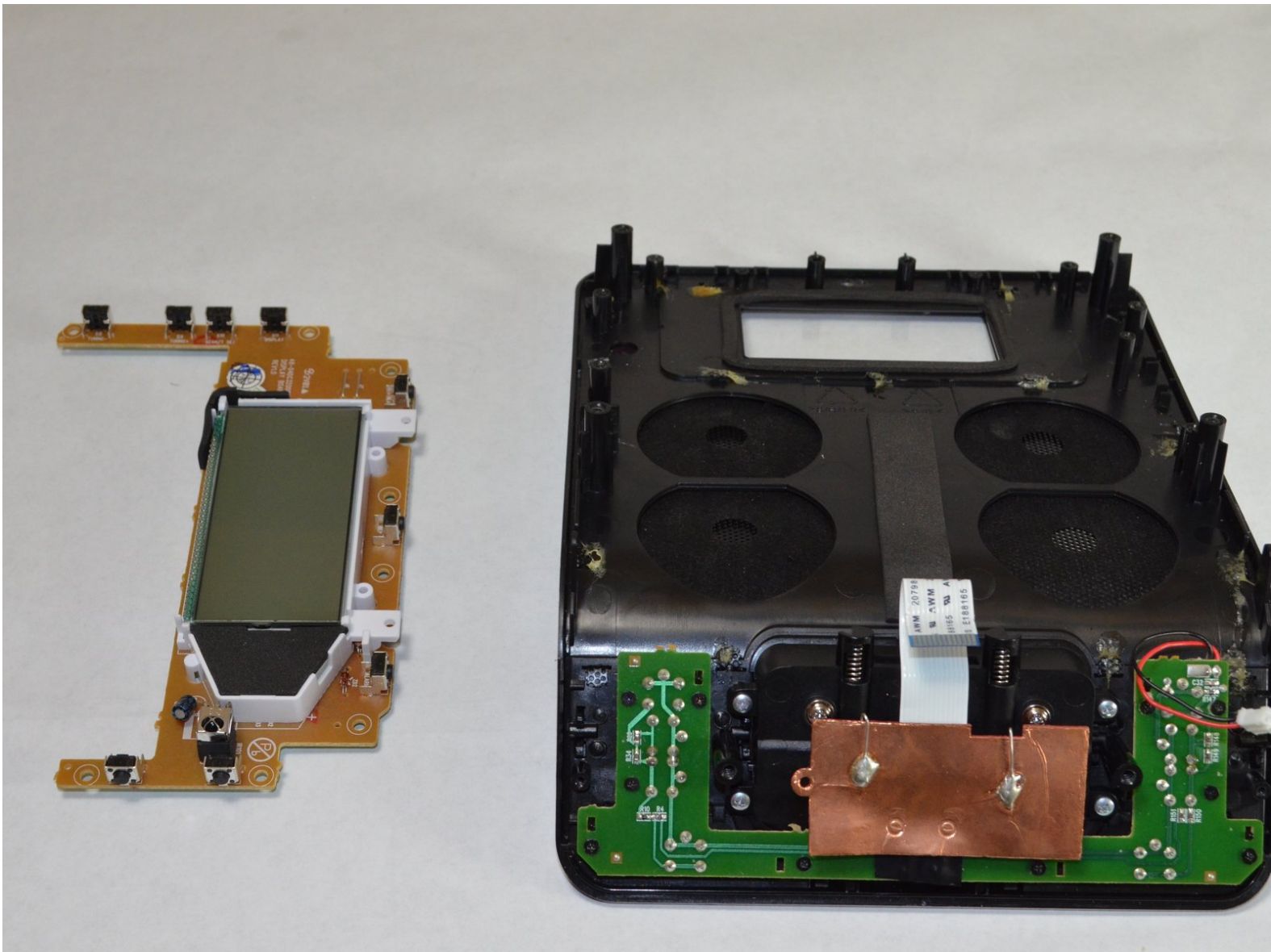




Philips DC320 37 LCD Screen Replacement

This guide outlines how to remove and install the LCD screen for the Philips DC320/37.

Written By: Greg Lane



INTRODUCTION

Follow the procedure in this guide to remove and install a broken LCD screen.



TOOLS:

- [Spudger](#) (1)
 - [Phillips #2 Screwdriver](#) (1)
 - [Phillips #1 Screwdriver](#) (1)
 - [Phillips #00 Screwdriver](#) (1)
-

Step 1 — Bottom Panel



- Pry off the four white feet with the pointed end of the spudger

Step 2



- Unscrew the four 15.5 mm Phillips #2 screws that hold the bottom panel to the dock.

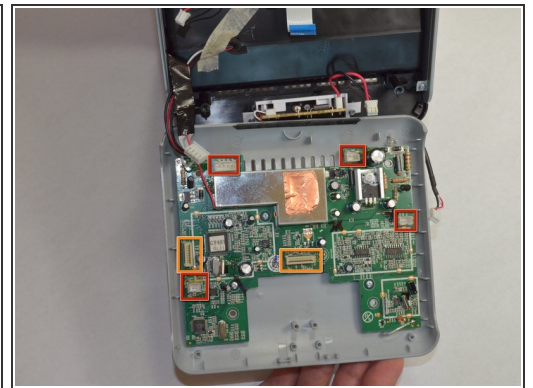
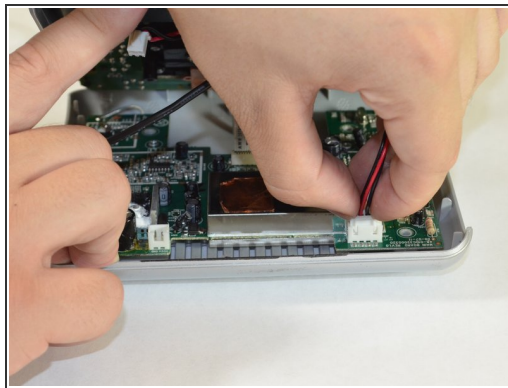
Step 3



- Use the flat end of the spudger to pry the lid off from the two connectors holding it to the body of the dock.

⚠ The connectors on the panel are fragile and may break.

Step 4



- Carefully pull up and out the four electrical connectors and the two ribbon connectors connecting the bottom panel and the dock.

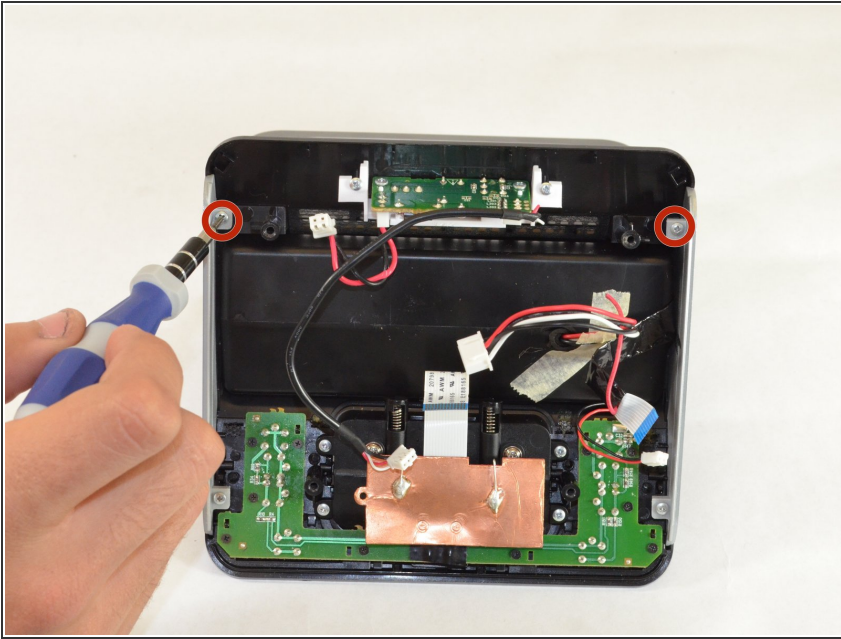
- Electrical Connectors

- Ribbon Connectors

⚠ The cables do not have a lot of slack in them. Be careful not to break the connectors.

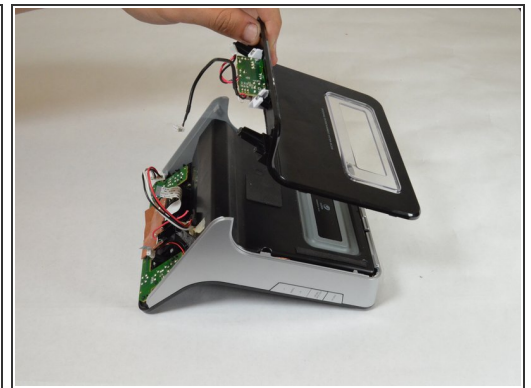
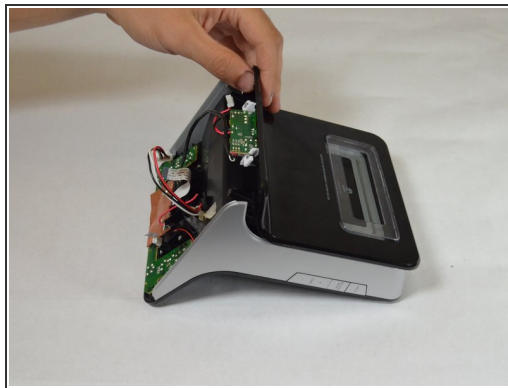
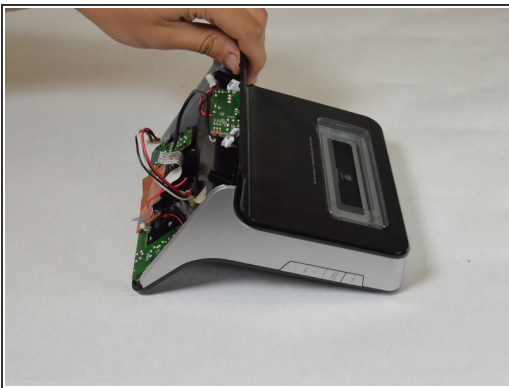
⚠ One wire is soldered onto the bottom panel. Be careful not to break this bond.

Step 5 — Speaker



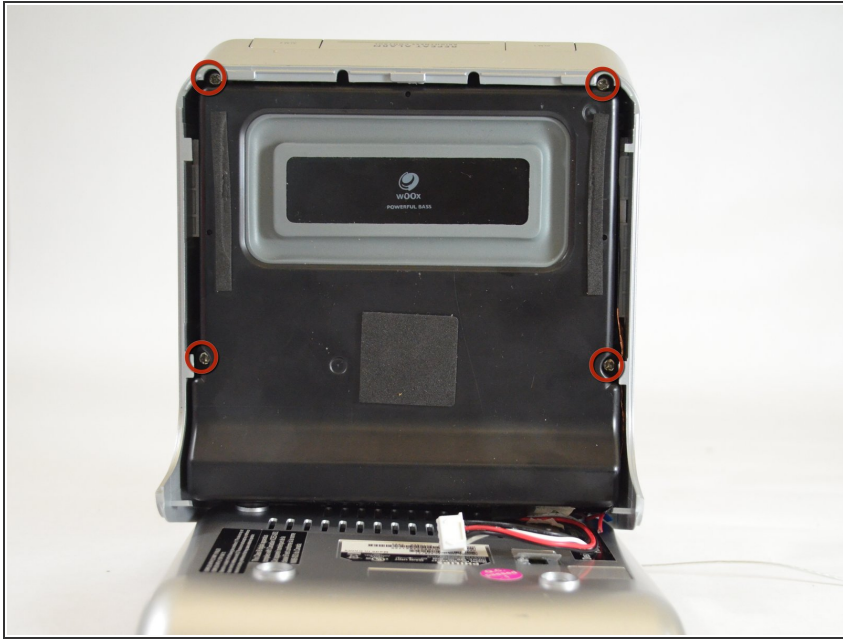
- Unscrew the two 6 mm Phillips #00 screws attaching the back panel to device.

Step 6



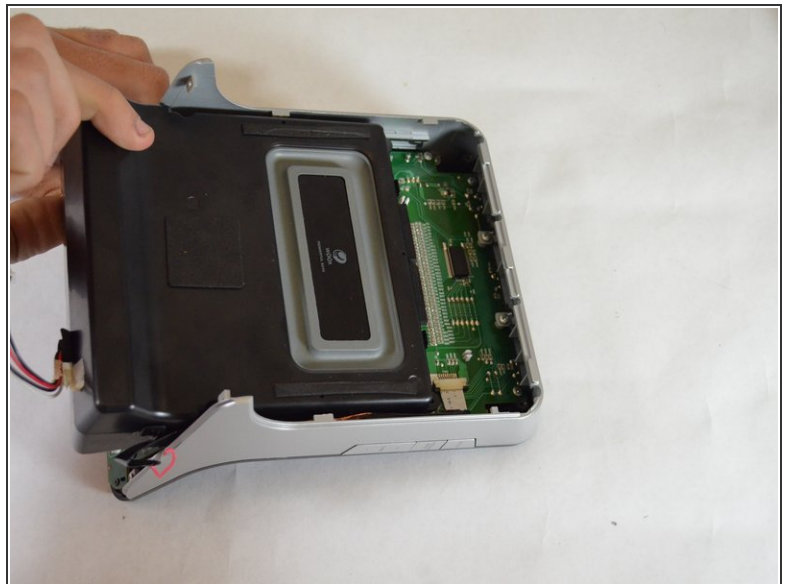
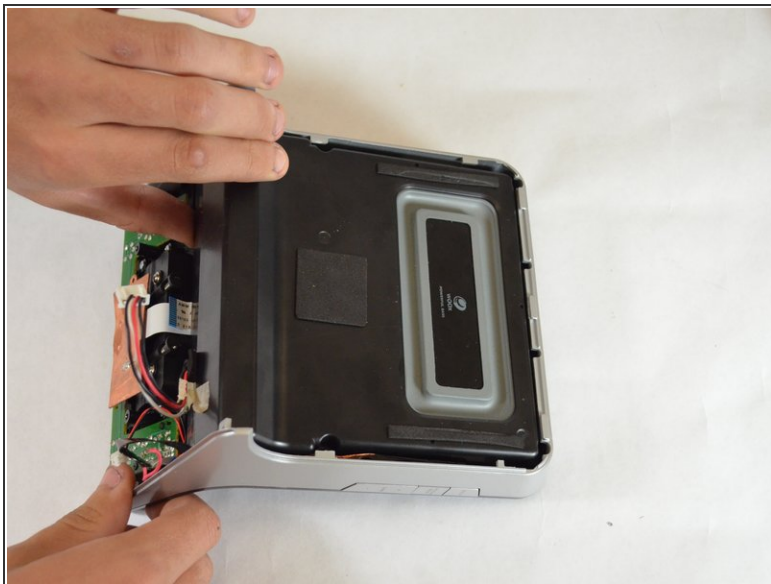
- Slide the back panel towards top of the device and lift away from the device to detach back panel.

Step 7



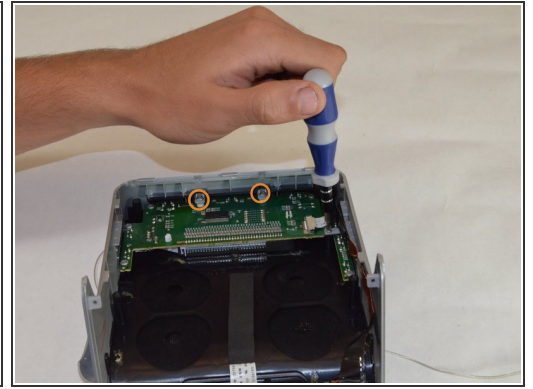
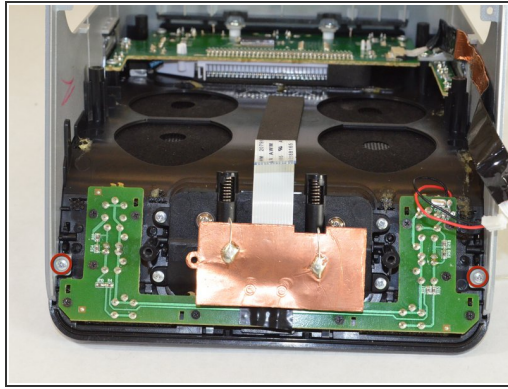
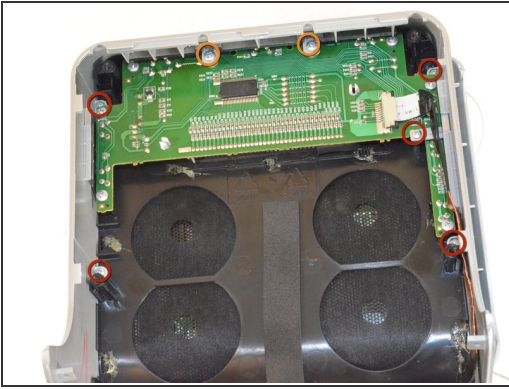
- Unscrew the four 16 mm Phillips #2 screws attaching the speaker unit to device.

Step 8



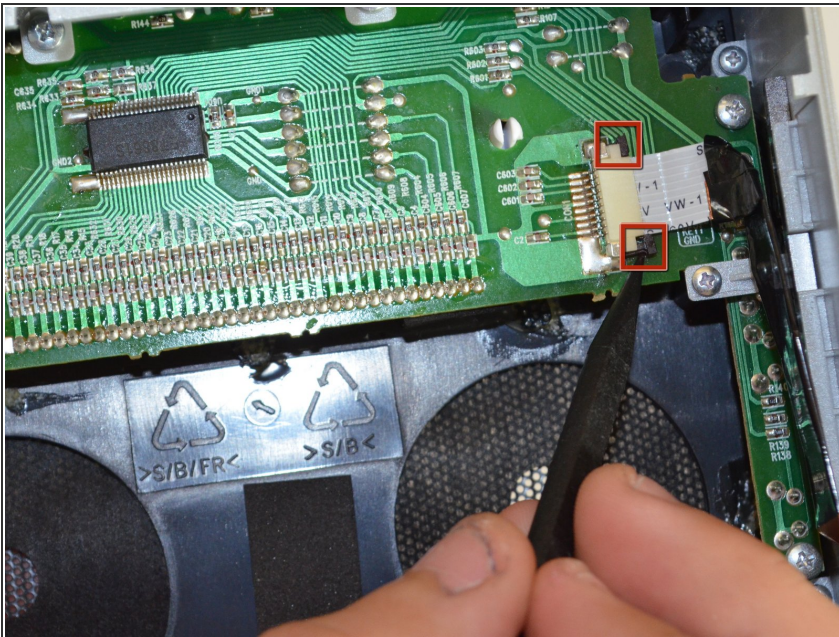
- Slide the speaker towards the bottom of the device to remove.

Step 9 — LCD Screen



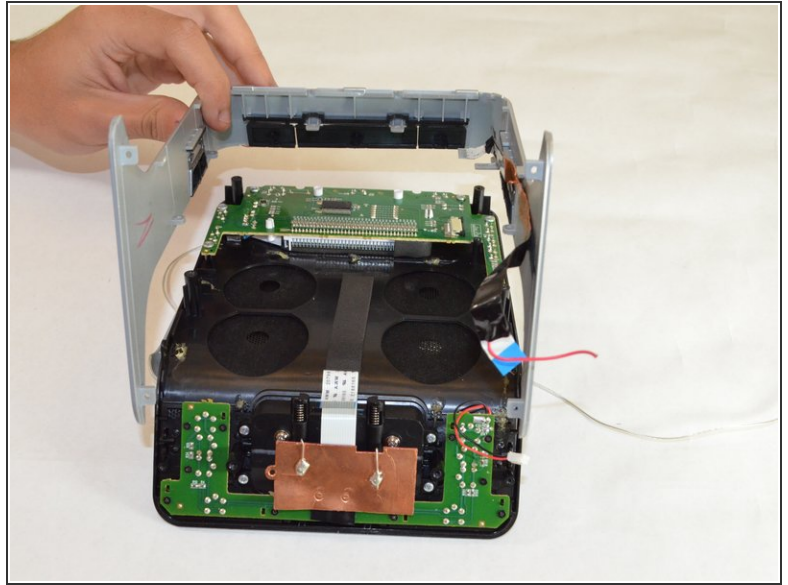
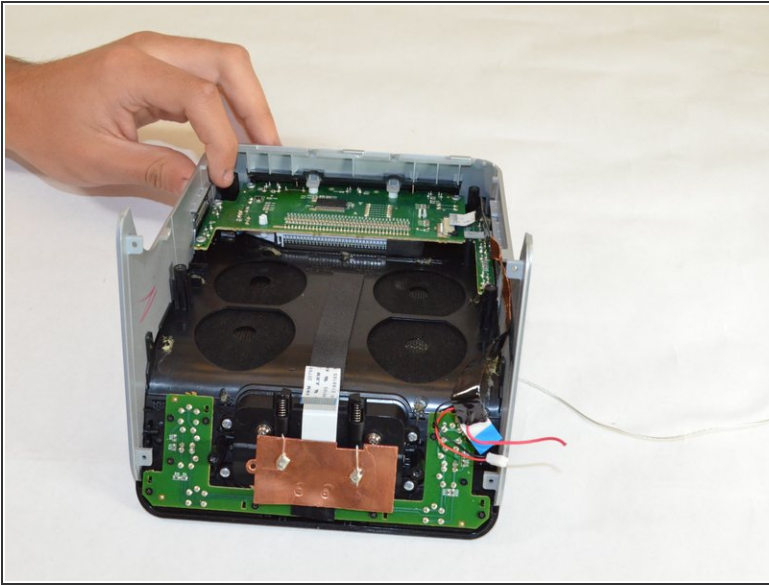
- Unscrew the seven 6 mm Phillips #00 screws holding the grey side piece to the black front panel.
 - ❗ Five of the Phillips #00 screws are on the LCD board. The other two are on the dock's bottom circuit board.
- Unscrew the two 8 mm Phillips #1 screws that go through the grey piece and the LCD motherboard.

Step 10



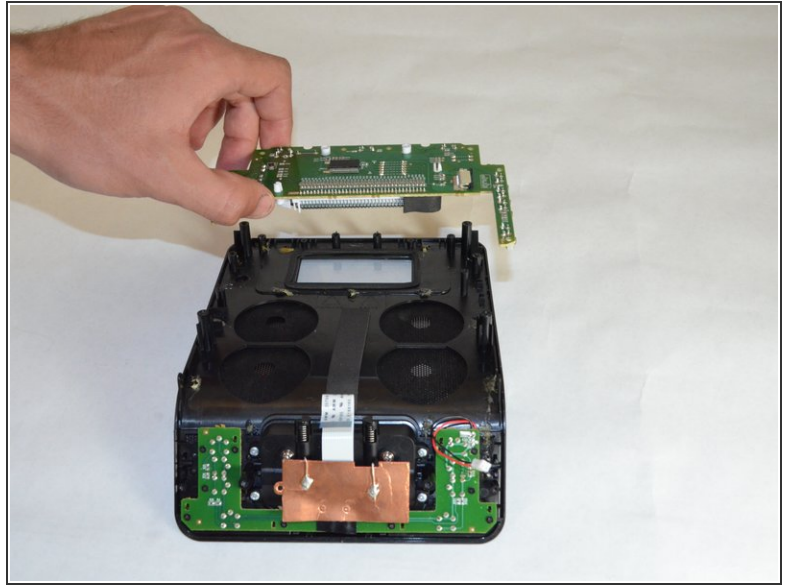
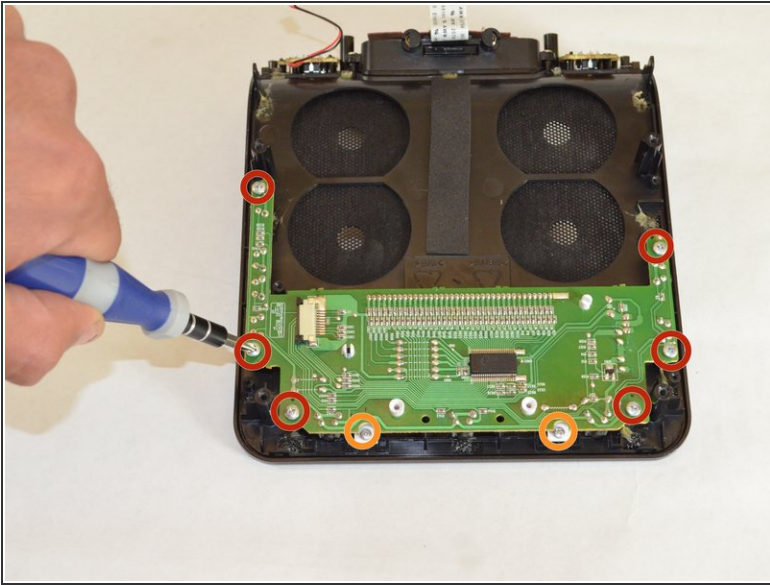
- Remove the ribbon cable from the ZIF connector by pulling out the two black tabs with the pointed end of the spudger then pulling the cable straight out of the connector.

Step 11



- Remove the grey side piece from the black front panel by pulling it straight up. It should easily slide off.

Step 12



- Unscrew the six 8 mm Phillips #1 screws holding the LCD screen to the black front panel.
- Unscrew the two 6 mm Phillips #00 screws from the top of the panel holding the the LCD screen to the front panel.
- Pull the LCD and circuit board off of the front panel.

To reassemble your device, follow these instructions in reverse order.