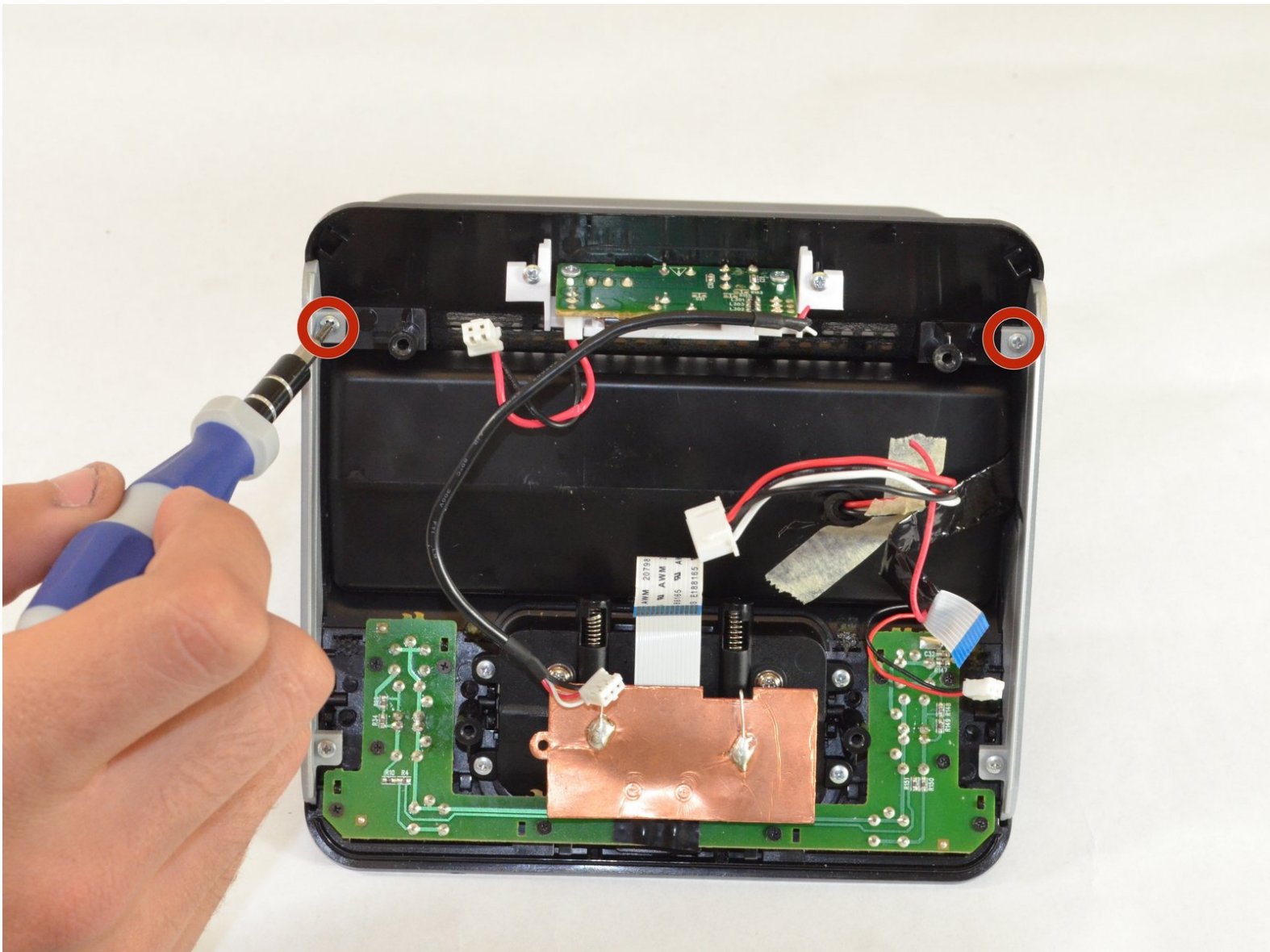




Philips DC320 37 Speaker Replacement

This guide outlines how to remove and install the speaker for the Philips DC320/37.

Written By: Graham Rolph



INTRODUCTION

Follow the procedure outlined in this guide to remove and install a speaker.



TOOLS:

- [Phillips #2 Screwdriver](#) (1)
 - [Spudger](#) (1)
 - [Phillips #00 Screwdriver](#) (1)
-

Step 1 — Bottom Panel



- Pry off the four white feet with the pointed end of the spudger

Step 2



- Unscrew the four 15.5 mm Phillips #2 screws that hold the bottom panel to the dock.

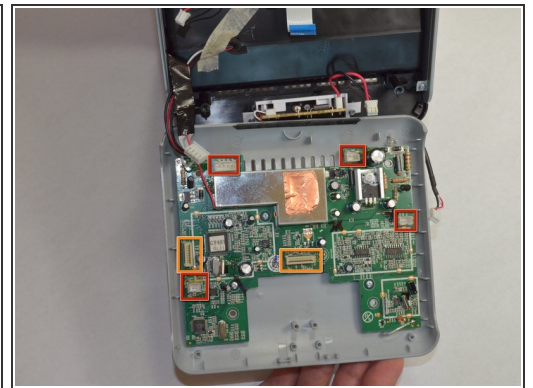
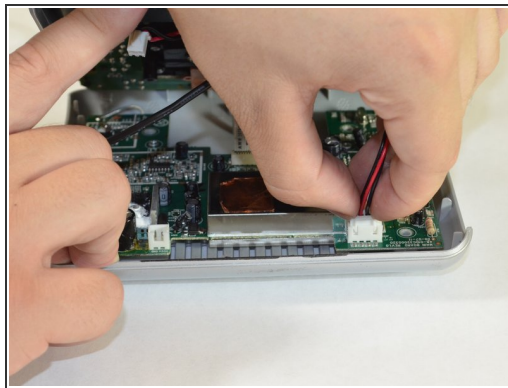
Step 3



- Use the flat end of the spudger to pry the lid off from the two connectors holding it to the body of the dock.

⚠ The connectors on the panel are fragile and may break.

Step 4



- Carefully pull up and out the four electrical connectors and the two ribbon connectors connecting the bottom panel and the dock.

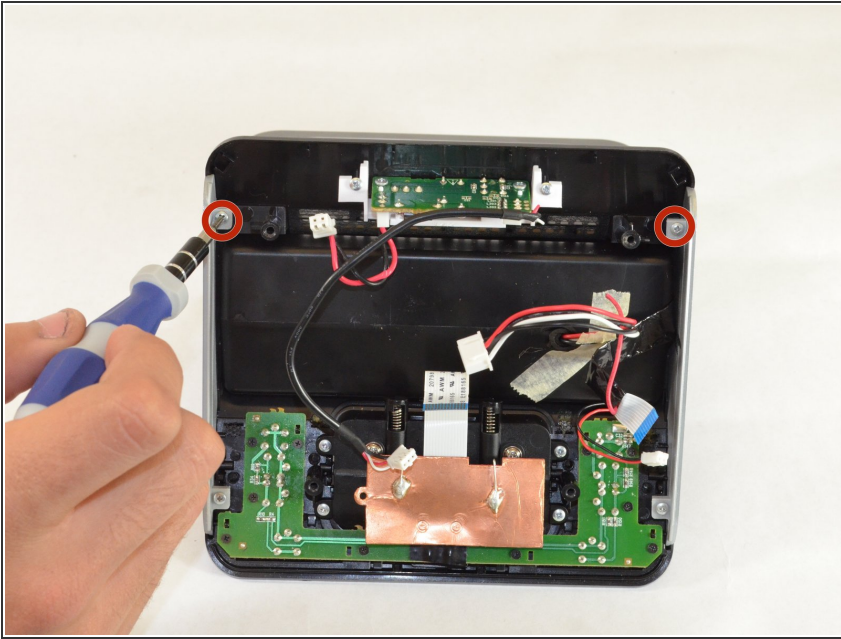
- Electrical Connectors

- Ribbon Connectors

⚠ The cables do not have a lot of slack in them. Be careful not to break the connectors.

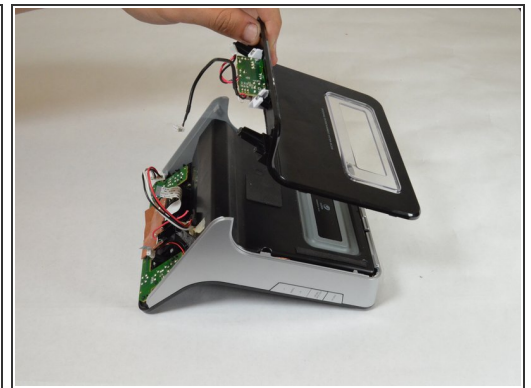
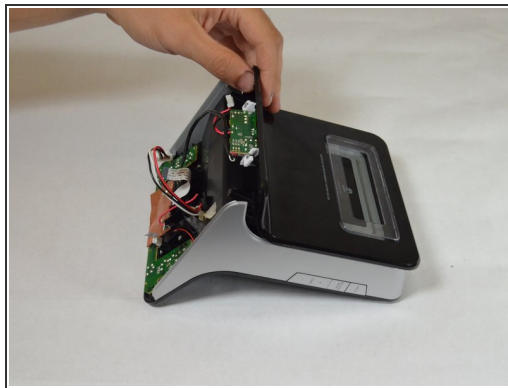
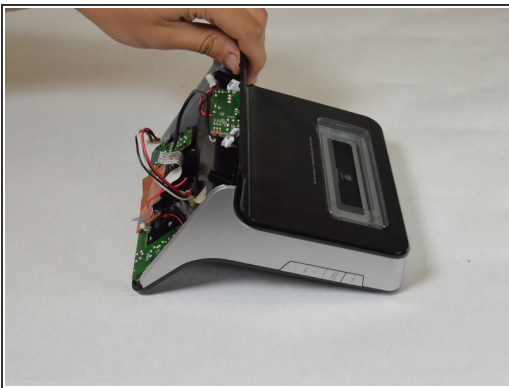
⚠ One wire is soldered onto the bottom panel. Be careful not to break this bond.

Step 5 — Speaker



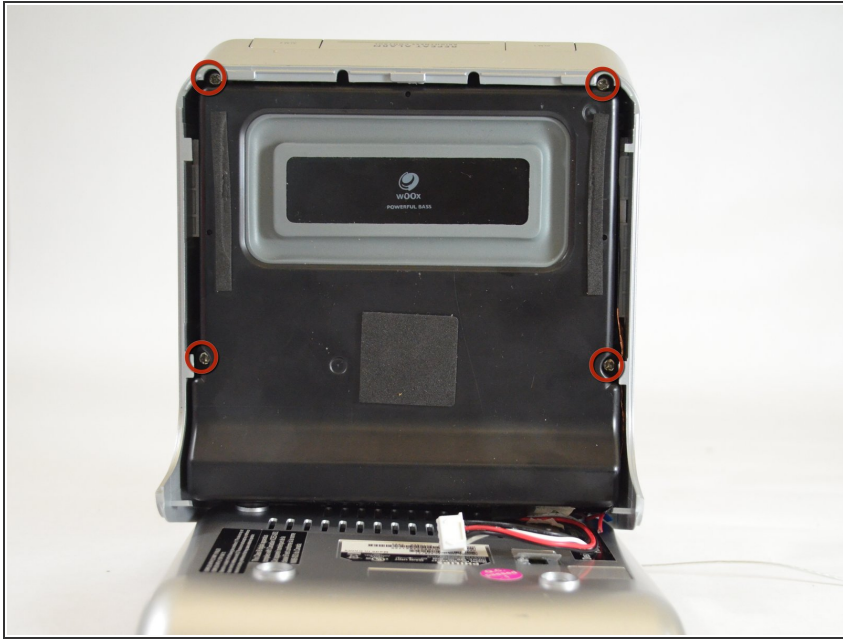
- Unscrew the two 6 mm Phillips #00 screws attaching the back panel to device.

Step 6



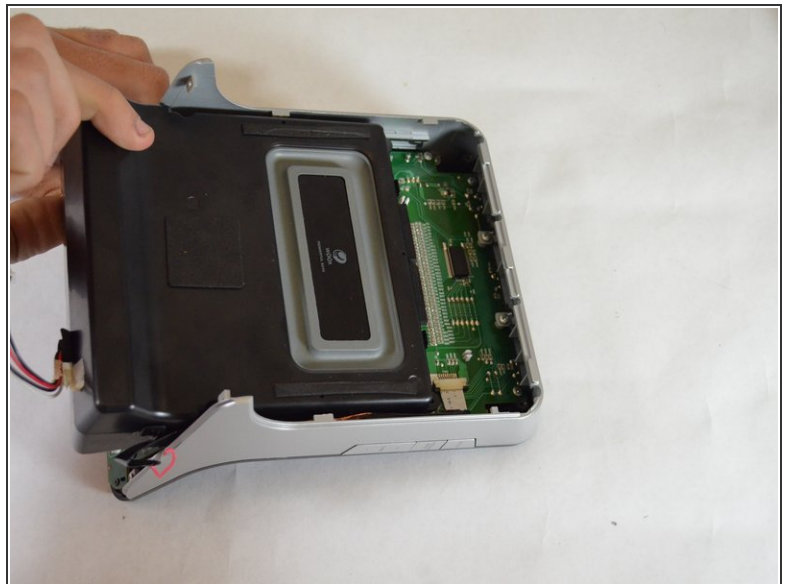
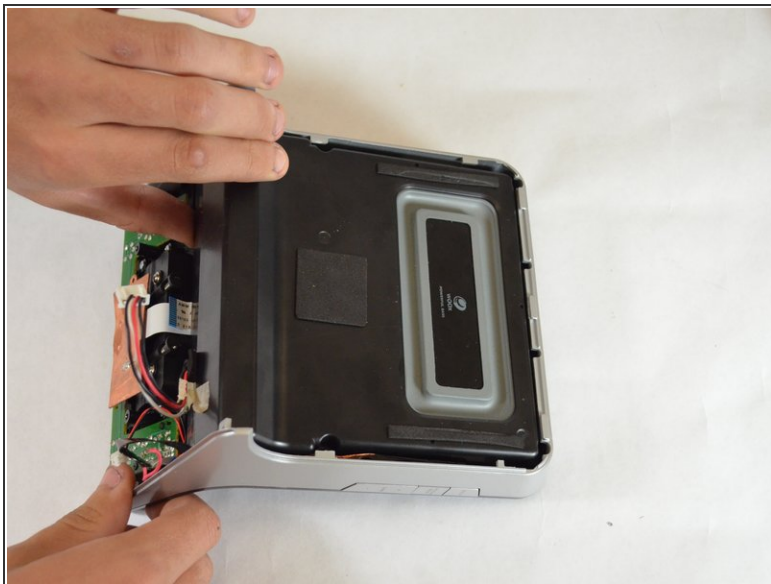
- Slide the back panel towards top of the device and lift away from the device to detach back panel.

Step 7



- Unscrew the four 16 mm Phillips #2 screws attaching the speaker unit to device.

Step 8



- Slide the speaker towards the bottom of the device to remove.

To reassemble your device, follow these instructions in reverse order.