



Philips DVP5992-F7 HDMI port Replacement

This guide will teach you how to replace the HDMI port on your Philips DVP5992-F7.

Written By: Nathan Sarti



INTRODUCTION

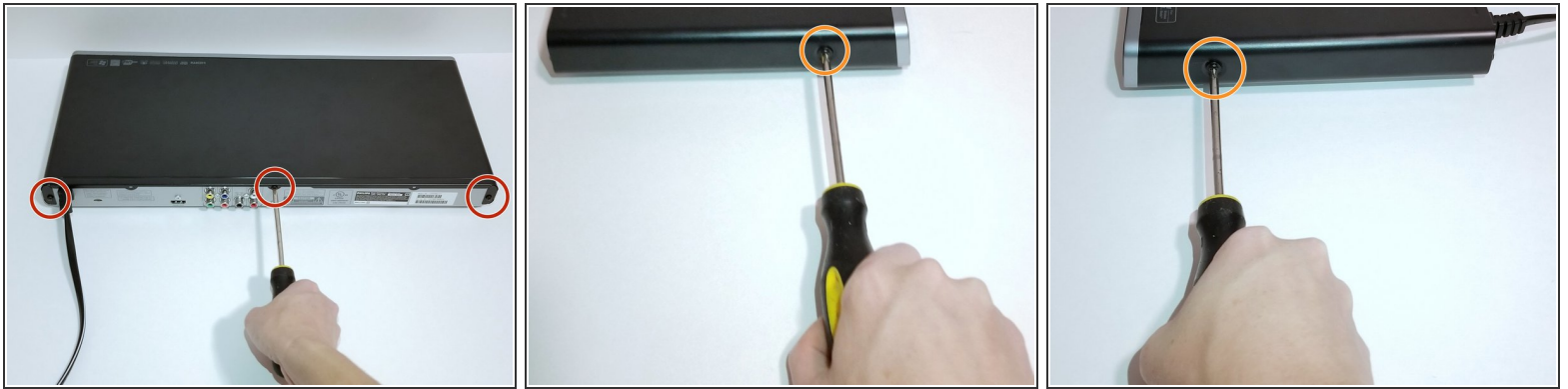
Over time, the HDMI port can become unresponsive. This guide will show you how to replace an unresponsive HDMI port on your Philips DVP5992-F7.



TOOLS:

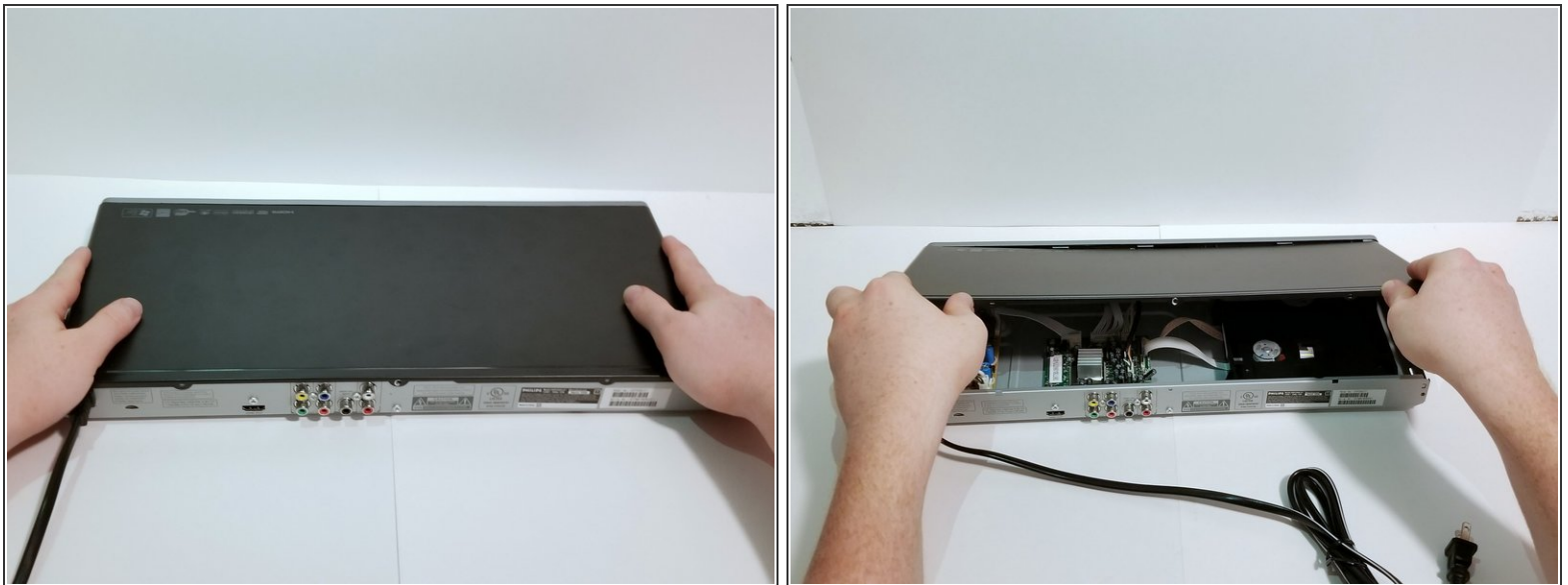
- [Phillips #1 Screwdriver](#) (1)
-

Step 1 — HDMI port



- Remove the three 6.4 mm Phillips #1 screws on the back of the device with a Phillips head screwdriver.
- Remove the 6.4 mm Phillips #1 screws on each side of the device.

Step 2



- Remove the top plate of the DVD by firmly grasping the player on both sides.
- Shift the top plate towards the backside of the player.
- Lift the back half of the top plate up to remove it from the player.

Step 3



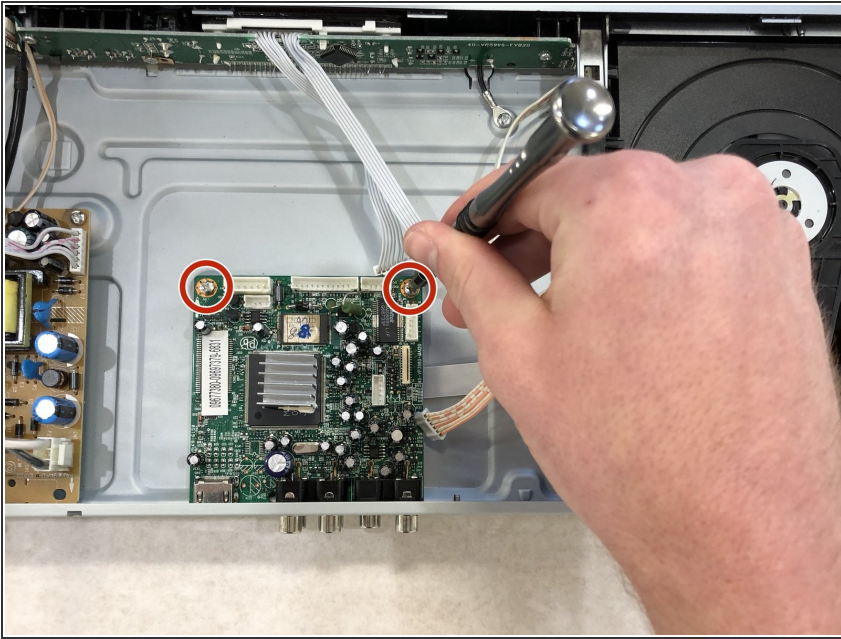
- Unplug the one ribbon wire and the five bundled cable connectors that are plugged into the motherboard.

Step 4



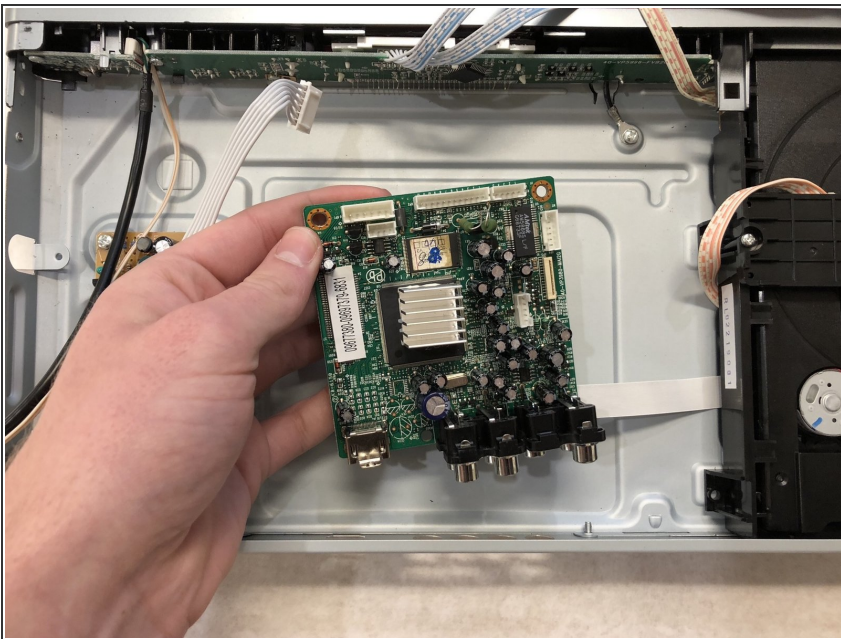
- Remove the three 4.76 mm #1 Phillips head screws located on the back of the DVD player.

Step 5



- Remove the two 7.94 mm #1 Phillips head screws from the motherboard.

Step 6



- Remove the motherboard from the DVD player.

To reassemble your device, follow these instructions in reverse order.