



# Philips DVP642 Disc Tray Replacement

Removing the disc tray from the device to install a new one.

Written By: Toby Goldsteinholm



---

## INTRODUCTION

In this guide, we are going to detach the disc tray from the device.



### TOOLS:

- [Phillips #0 Screwdriver](#) (1)
-

## Step 1 — Top Panel



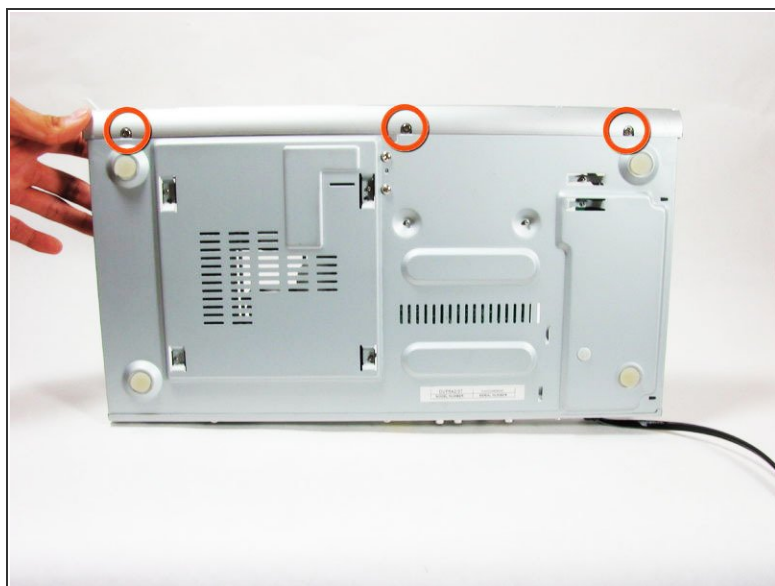
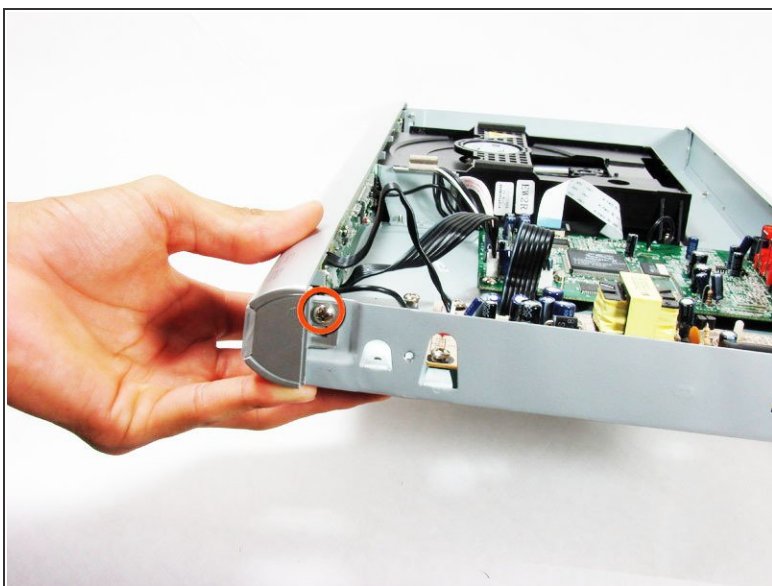
- Remove four 7.5 mm Phillips screws on the both sides (2 on each side).
- Remove five 7.5 mm Phillips screws on the back of the player.

## Step 2



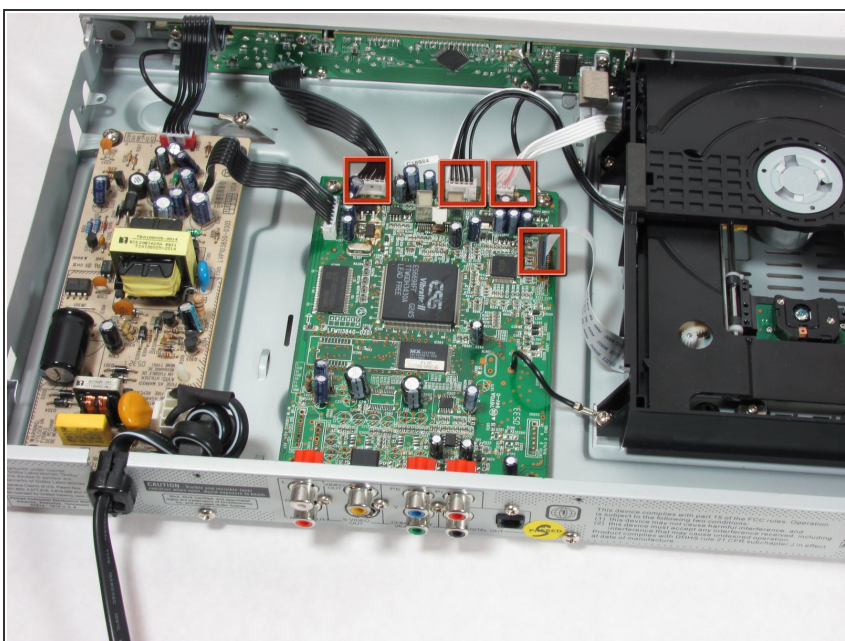
- Lift the top panel from the back and remove. It should come off without being forced. There is a lip near the front so you may need to slide the top panel back slightly to remove it.

## Step 3 — Disc Tray



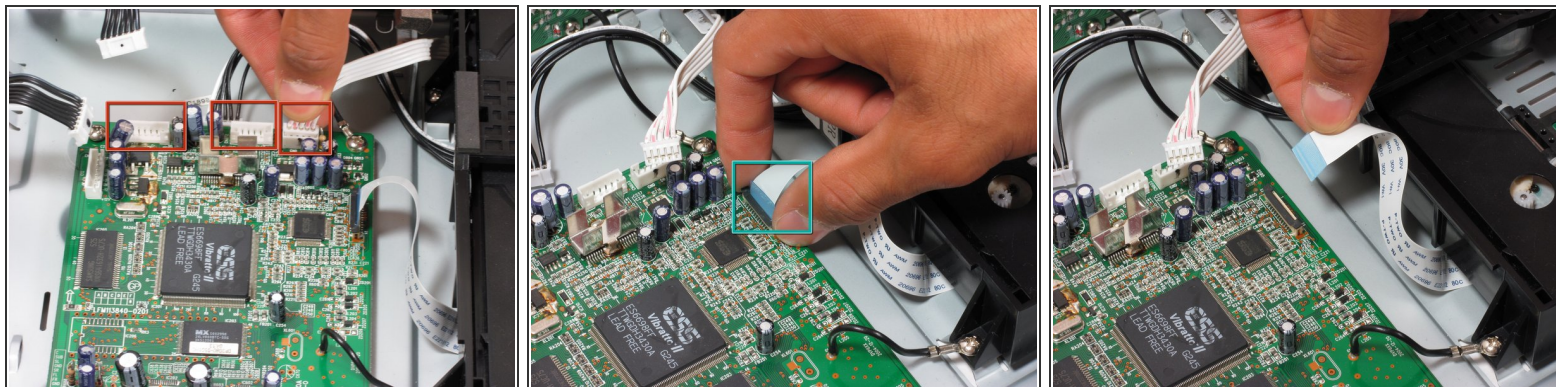
- Remove two 7.5 mm screws, one on each side of the player.
- Remove three 7.5mm screws from the bottom of the player.
- ⓘ Note that the three screws from the bottom are slightly different screws.

## Step 4



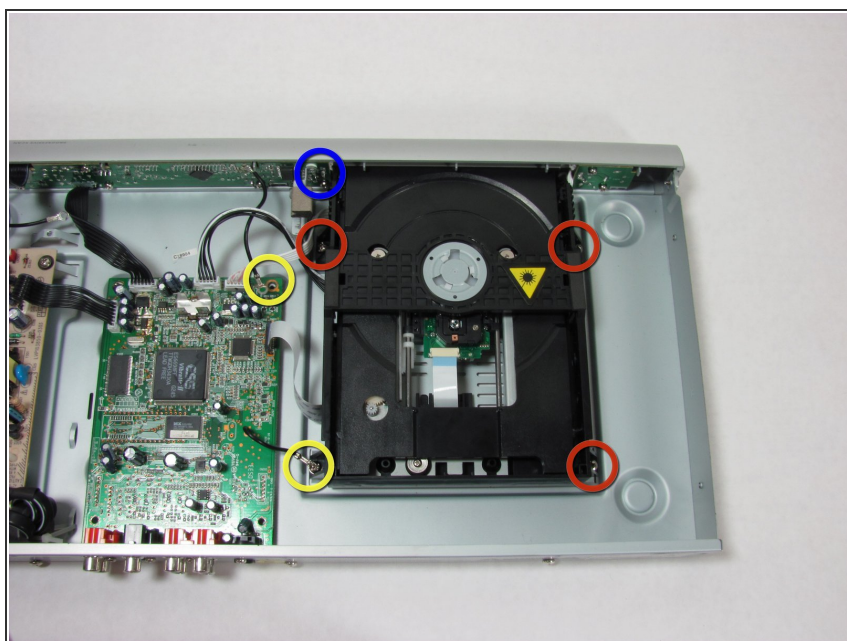
- Detach all the ribbon wires (4) attached to the motherboard

## Step 5



- The first 3 ribbon wires can be removed by grasping near the head and gently pulling up.
- Locate the skinny fourth ribbon wire near the top right of the motherboard.
- ⚠ Remove the fourth ribbon wire by grasping both sides of the black clip and pulling up. When reinserting, pull the black clip up, insert the ribbon ribbon, and push the black clip back down.
- ⚠ Be firm, but gentle when pulling to avoid pulling the wires off the head.

## Step 6



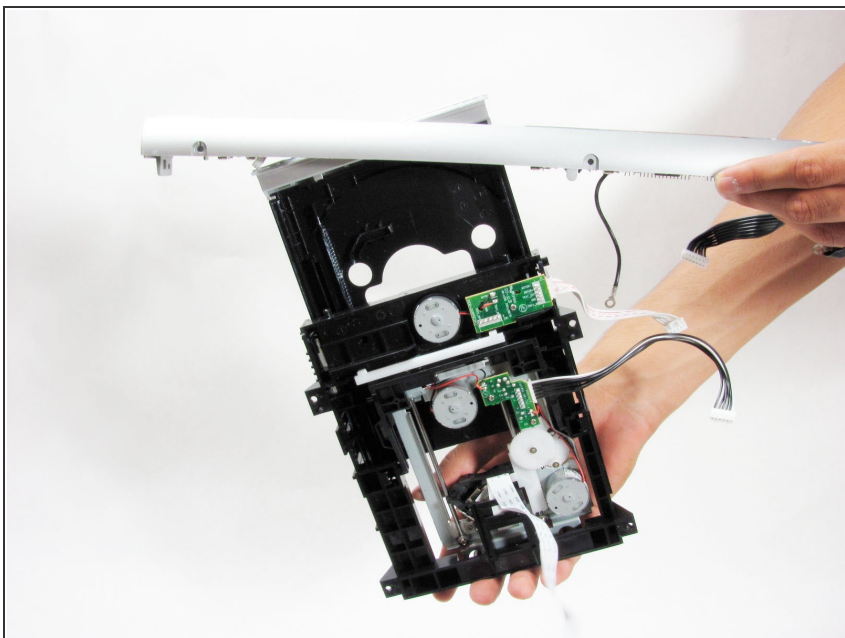
- Now remove the remaining three 7.5 mm Phillips screws that hold the disc tray to the body.
- Remove the 12 mm Phillips screw that secures the tray to the upright metal frame.
- Remove the two 7.5 mm Phillips screws that attach the disc tray to the motherboard and front panel.

## Step 7



- Gently pull forward and upward to free disc tray.

## Step 8



- Tilt the tray sideways and then pull back gently to separate the tray from the front panel.

To reassemble your device, follow these instructions in reverse order.