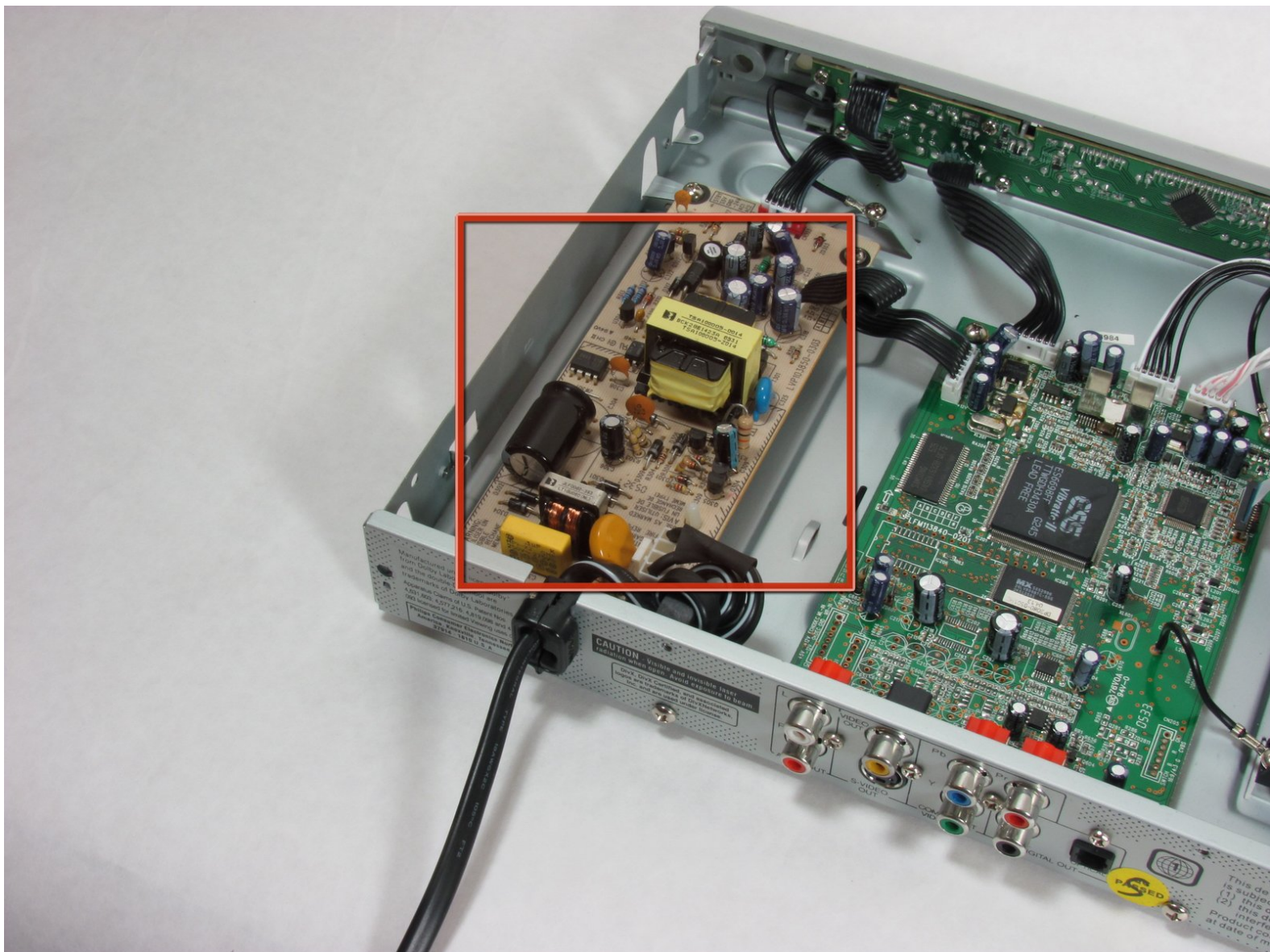




# Philips DVP642 Power Supply Replacement

Removing the power supply for the DVD player to install a new one.

Written By: Toby Goldsteinholm



---

## INTRODUCTION

This guide will walk you through removing the old power supply for the DVD player so that a new one may be installed. This guide will also show you how to replace a blown fuse if needed.

---

### **TOOLS:**

- [Phillips #0 Screwdriver](#) (1)
-

## Step 1 — Top Panel



- Remove four 7.5 mm Phillips screws on the both sides (2 on each side).
- Remove five 7.5 mm Phillips screws on the back of the player.

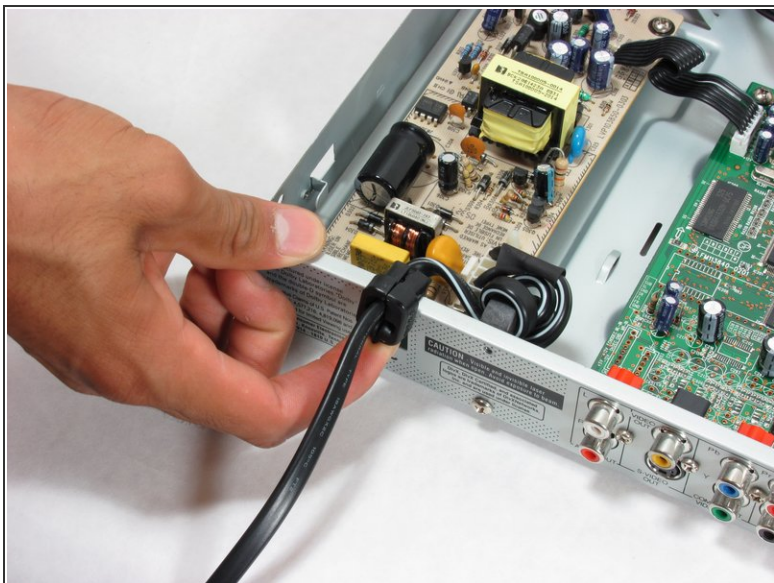
## Step 2



- Lift the top panel from the back and remove. It should come off without being forced. There is a lip near the front so you may need to slide the top panel back slightly to remove it.

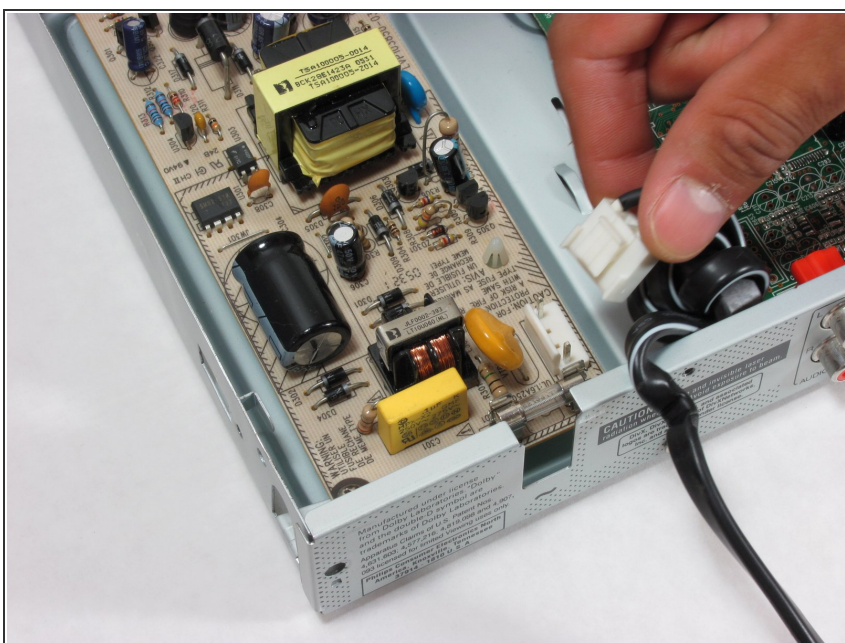


## Step 3 — Power Supply



- Slide the power cord out from the case.
- Be sure not to lose the rubber clip that is wrapped around the cord.

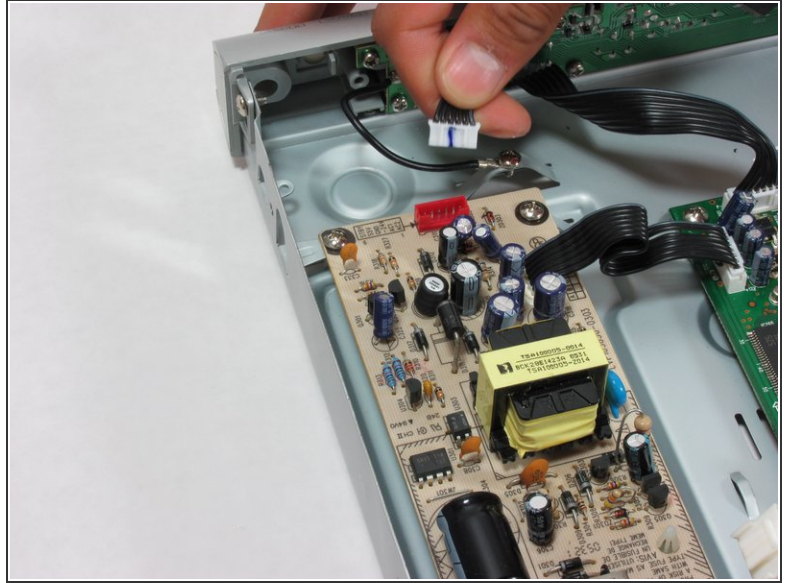
## Step 4



- Remove the ribbon attached to the power supply by pushing the latch and gently pulling up.

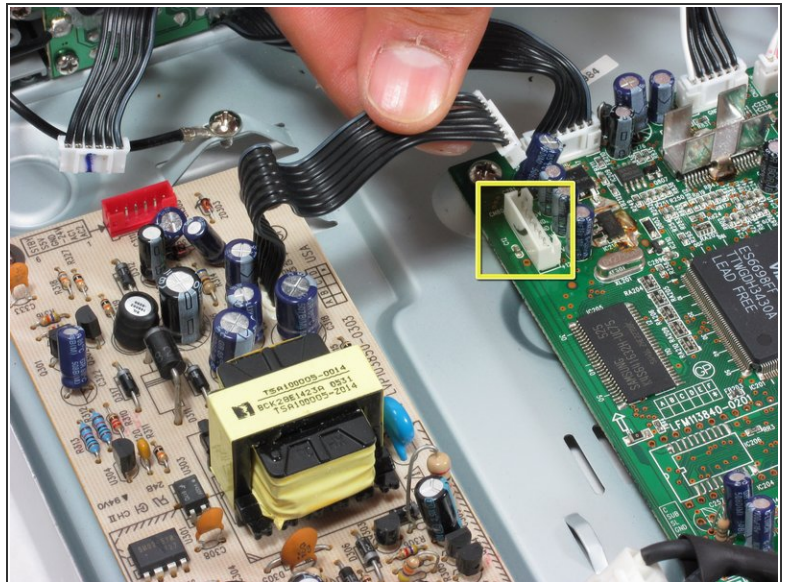
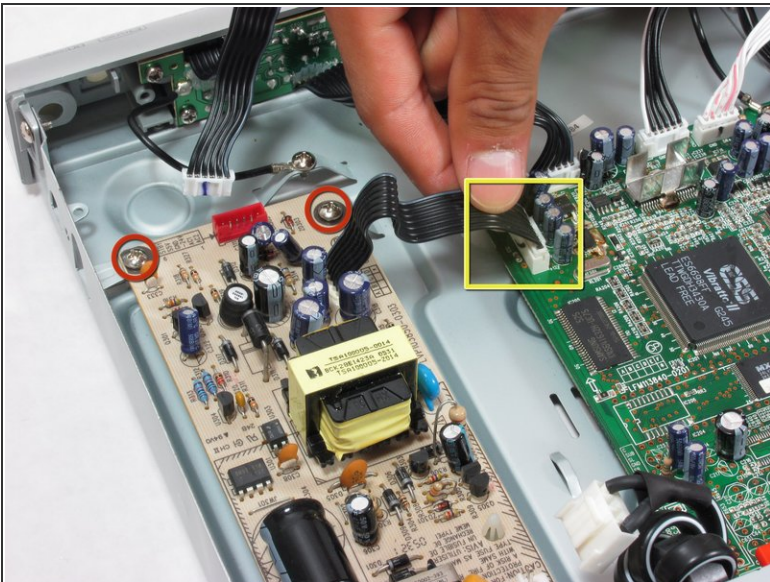


## Step 5



- Now remove this ribbon wire by grasping the white head firmly and pulling up gently.

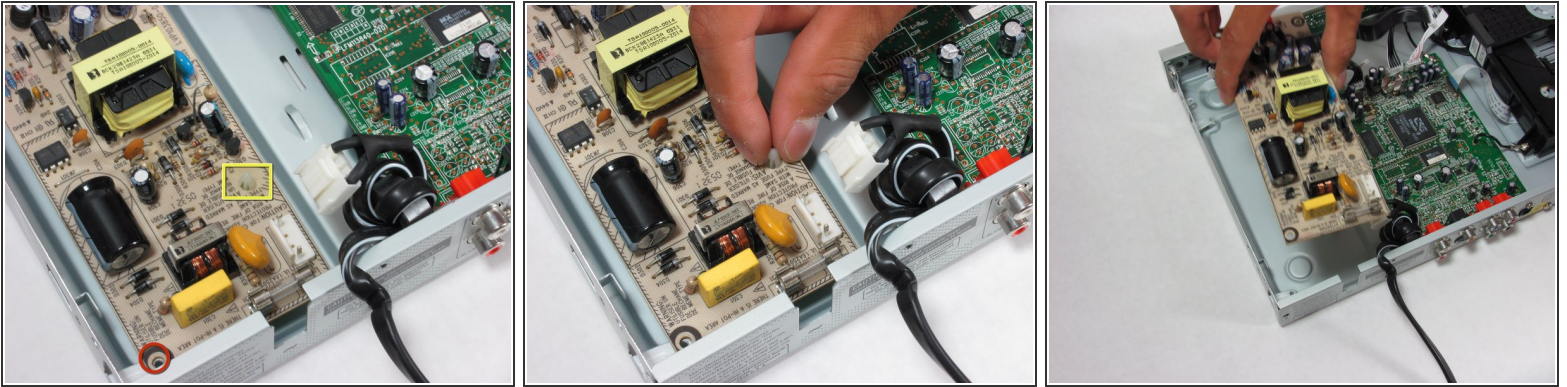
## Step 6



- Remove these two 7.5mm Phillips screws and the matching set at the other end of the supply.
- Now remove the ribbon that attaches the power supply to the motherboard by grasping the white head and gently pulling up.

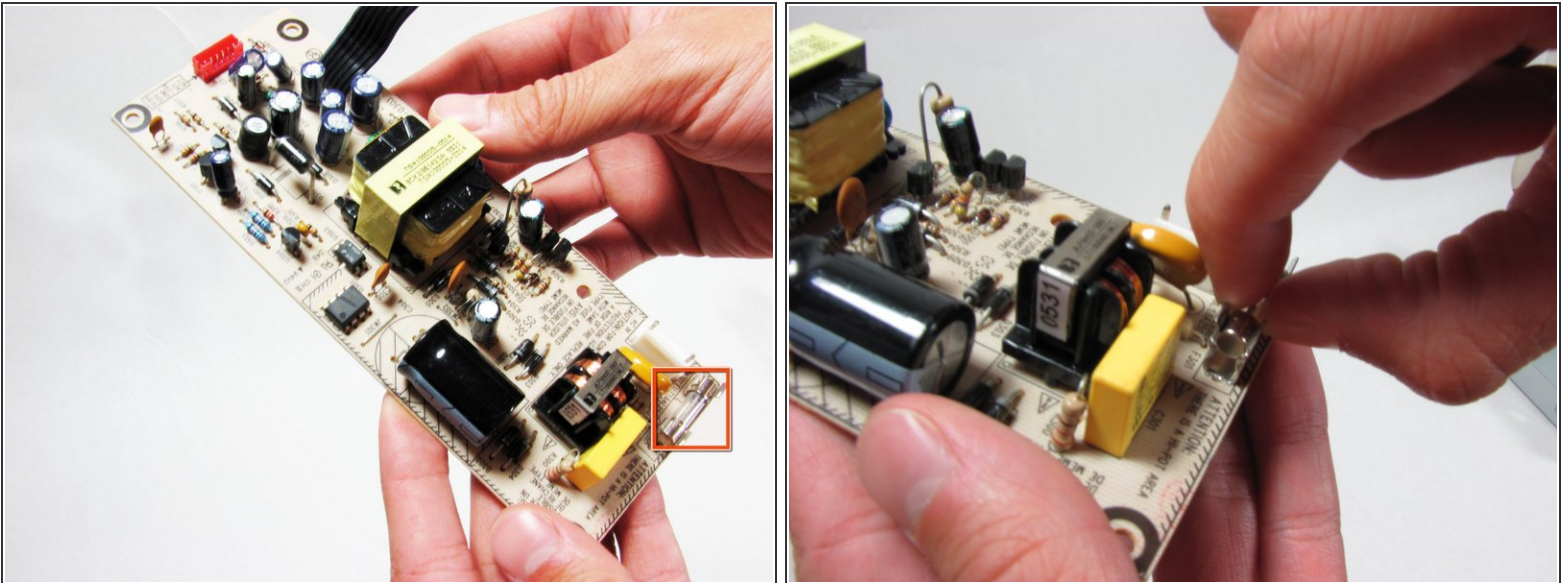


## Step 7



- Remove the last screw.
- Pinch this plastic prong and slide the power supply up and over it. The power supply should lift free.

## Step 8



- Your power supply is now free!
- If the fuse circled here is blown (the small wire in the glass tube is missing or broken), remove it by pinching it tightly and pulling it straight out.
- You can find a new fuse [here](#).

To reassemble your device, follow these instructions in reverse order.