



Philips Norelco BeardTrimmer 3100 Battery Replacement

Removing the battery on the Philips Norelco BeardTrimmer 3100.

Written By: Darren Chu



INTRODUCTION

When the battery dies completely and no longer holds a charge, this guide will illustrate the proper way of removing the battery for replacement. **CAUTION.** Please do not throw away the dead battery in the trash. See a proper disposal center for any handling of dead batteries.



TOOLS:

- [Metal Spudger](#) (1)
 - [Utility Scissors](#) (1)
-

Step 1 — Front and Back Panels



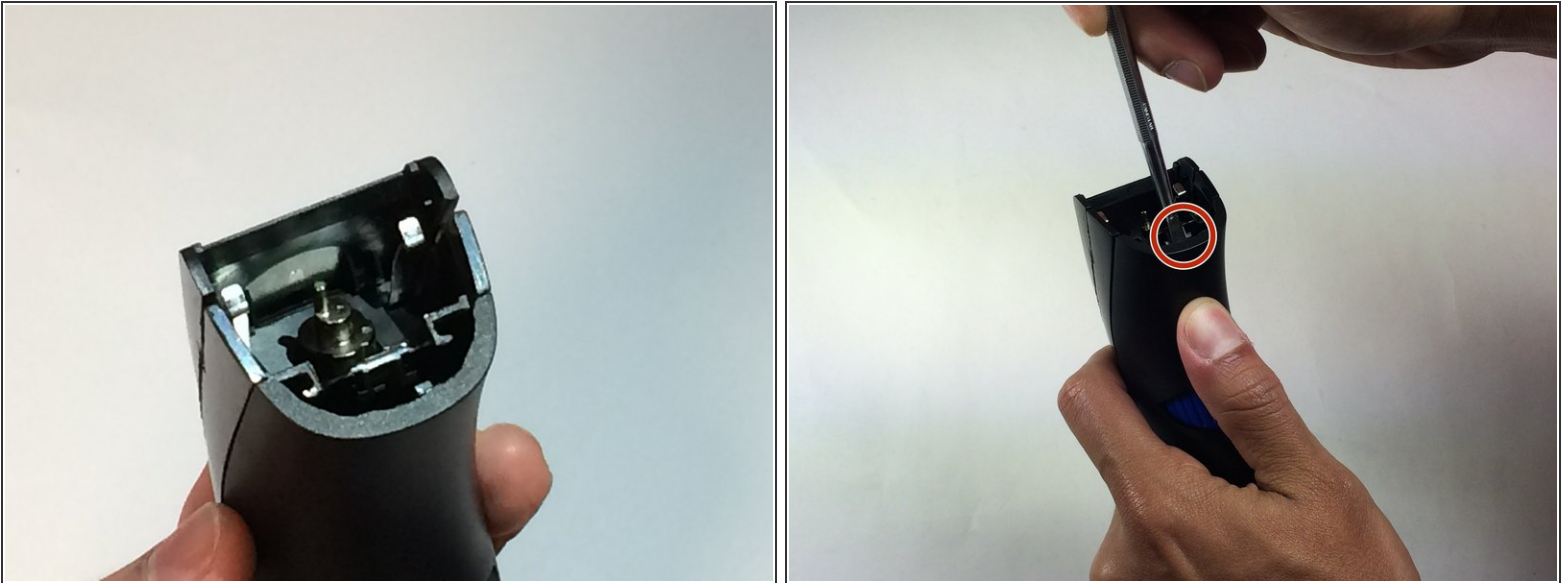
- Remove the comb from the top of the trimmer.

Step 2



- Place your thumb underneath the blade and push upward to remove it.

Step 3



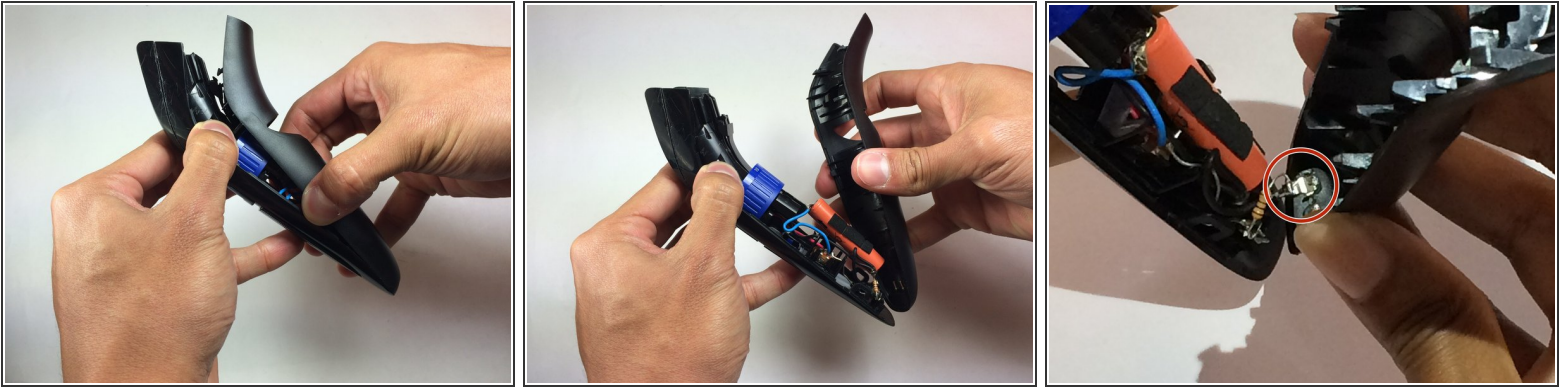
- Hold trimmer towards you as shown in the diagram.
- Insert your prying tool/metal spudger into the marked area.

Step 4



- Apply gentle pressure and begin prying open the back panel.
- Separate the panel one notch at a time. Listen carefully as you're prying the panel apart and notice each individual notch release.

Step 5



- Pull the trimmer apart using your hands once the panel is at least halfway apart.
- Pull the wires attached to the battery off of the power connectors before completely removing the back panel.

Step 6



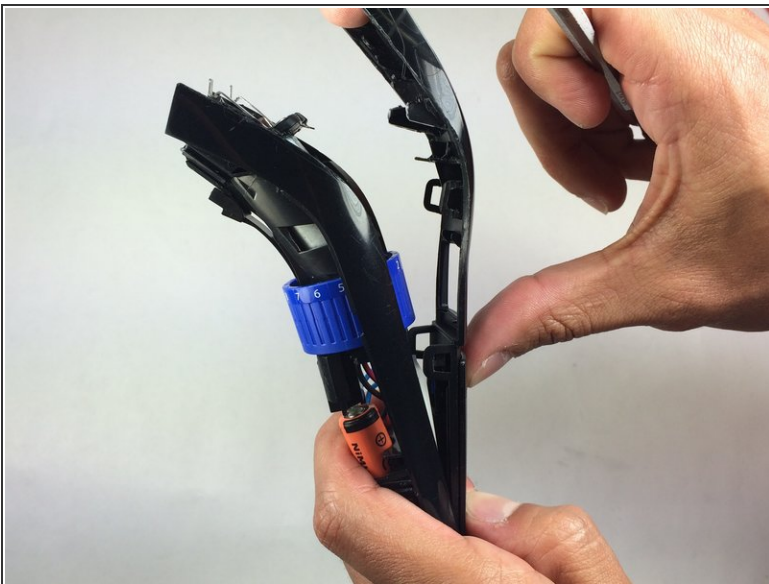
- Hold the trimmer towards you.
- Place the metal spudger tool in the marked area.

Step 7



- Apply gentle pressure and begin prying the front panel.
- Separate the front panel one notch at a time.

Step 8



- Pull the trimmer apart using your hands once the panel is at least halfway apart.

Step 9 — Battery



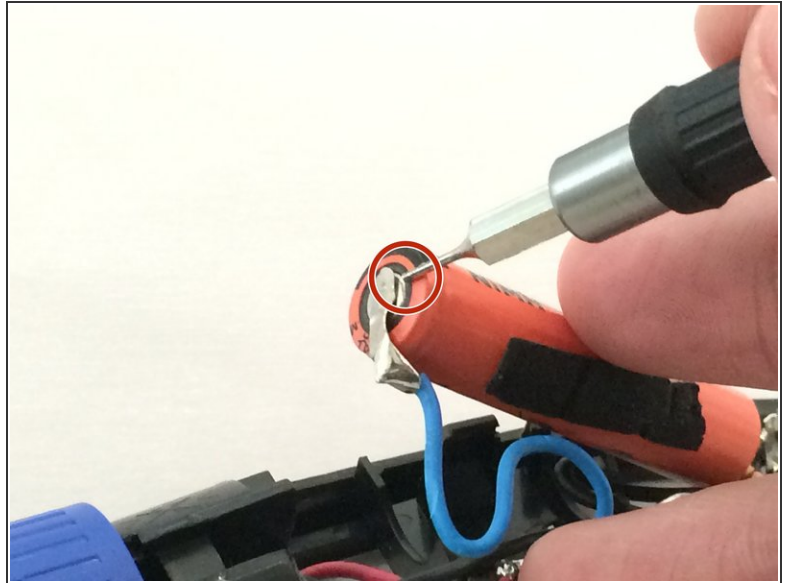
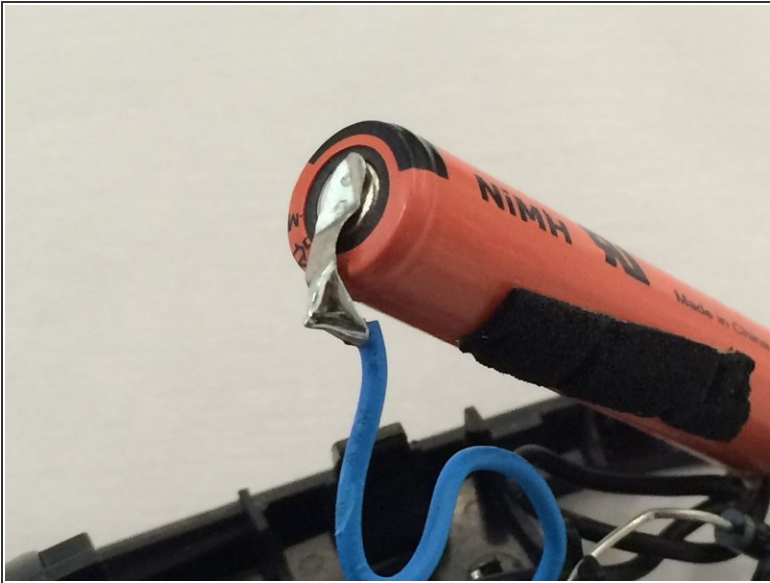
- Face the battery towards you.
- Locate the power connectors on the bottom of the trimmer, pull them from the base with your spudger.

Step 10



- Grab the battery by its sides, pull it upwards out of the base of the trimmer.

Step 11



- Locate the connection between the blue wire and the battery. Melt the solder and completely remove the battery.
- ⚠ Be careful when dealing with solder. The metals will become very hot and can cause damage to skin/clothing.

To reassemble your device, follow these instructions in reverse order.