



# Philips Norelco MultiGroom 3100 Battery Replacement

Battery replacement of a Philips Norelco MultiGroom 3100

Written By: Mahmoud



## INTRODUCTION

This guide will demonstrate how to change the battery of a Philips Norelco MultiGroom 3100. Tear down/reassembly requires a plastic spudger and soldering equipment.



### TOOLS:

- [iFixit Opening Tools](#) (1)
- [Staples](#) (1)
- [Solder](#) (1)
- [Desoldering Braid](#) (1)
- [Soldering Iron](#) (1)
- [Spudger](#) (1)



### PARTS:

- [Norelco Battery](#) (1)

## Step 1 — Power Button



- Remove the comb from the top of the trimmer.

## Step 2



- Grip the attachment and twist it counterclockwise until you hear a click.
- Pull the attachment up to remove it from the trimmer.

### Step 3



- Hold the trimmer upright so it is facing you.
- Insert the plastic opening tool in the gap at the top of the power button.

### Step 4



- Apply pressure to pry off the power button.



## Step 5 — Casing



- Insert the spudger into the bottom of the gray bezel and begin to gently pry it off.

**i** Separate the bezel one clip at a time so that the clips do not break.

## Step 6



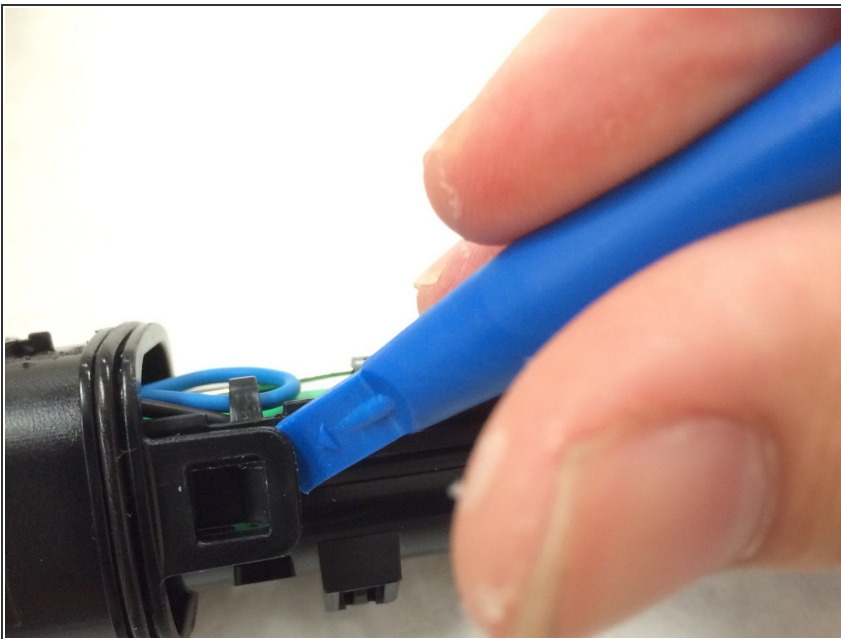
- Insert the spudger in the indicated hole and apply a tilting force to loosen the outer casing.
- Pull upward on the top of the inner housing to remove it from the outer casing.

## Step 7 — Battery



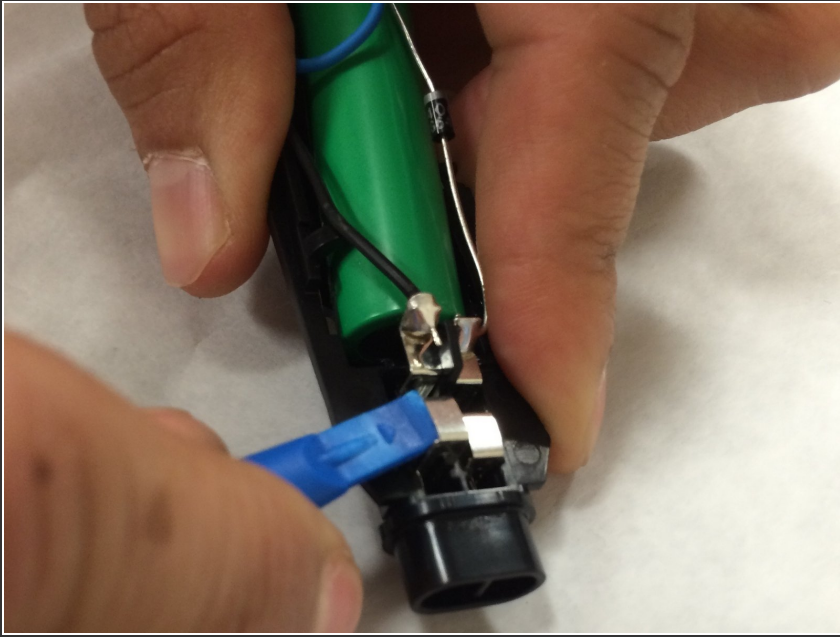
- Grab the upper casing firmly and pull to separate from lower casing.
- ⚠ This will require some force and may separate suddenly.

## Step 8



- Once upper casing is removed, use plastic spudger and insert into the side tabs to free battery casing.
- Once tabs are freed, pull battery casing from upper casing.
- ⓘ Upper casing will not separate from tab separation alone, removal will still require manipulation by hand.

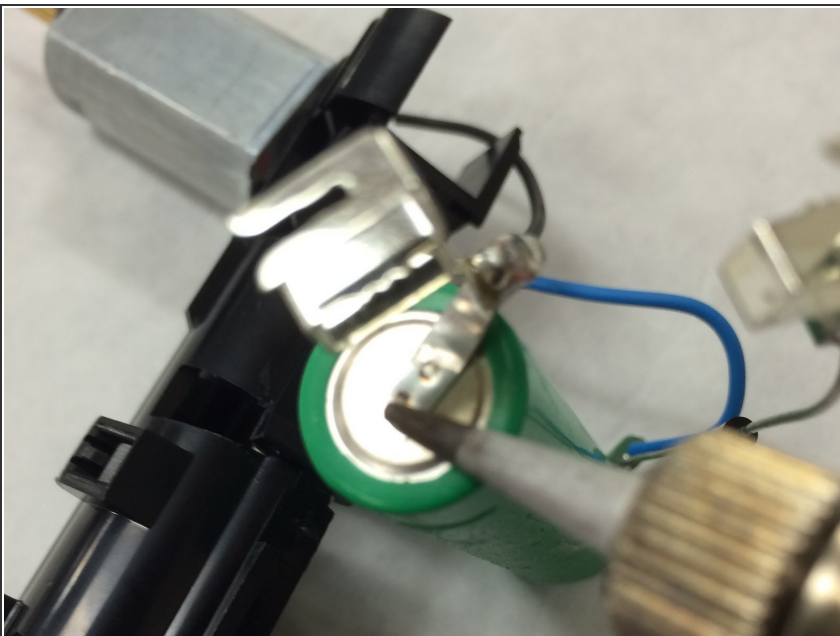
## Step 9



- Insert plastic spudger into battery brackets individually. "Wiggle" the bracket out of place

⚠ Be careful to not bend bracket severely --brackets will need to fit back into place later.

## Step 10

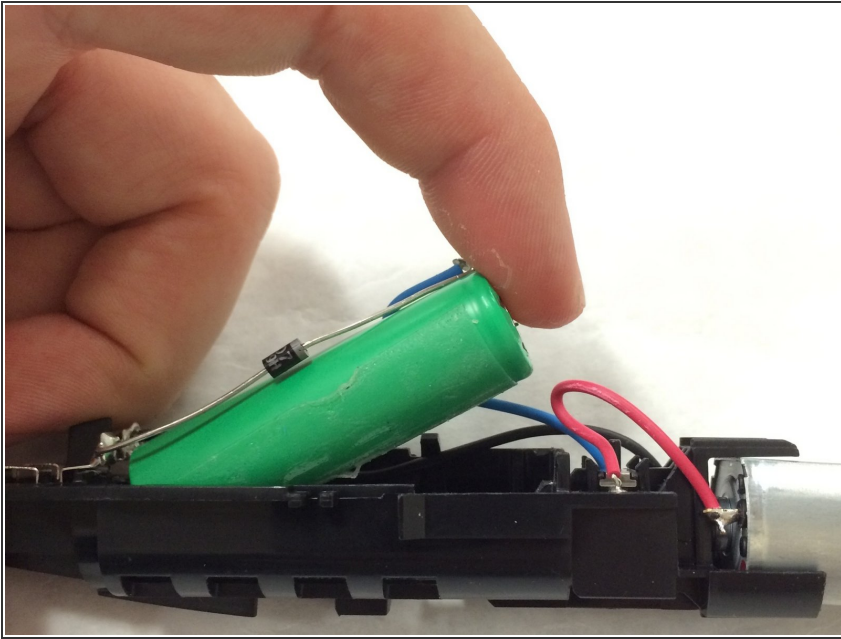


- Use a soldering gun and apply heat to the battery contact tabs until solder is malleable.
- Once solder is malleable, carefully insert a plastic spudger beneath the tab and over the battery to pry battery away from the contact tab.

⚠ Use proper safety equipment when operating a soldering gun, as burns can occur. Gloves and eye protection recommended.

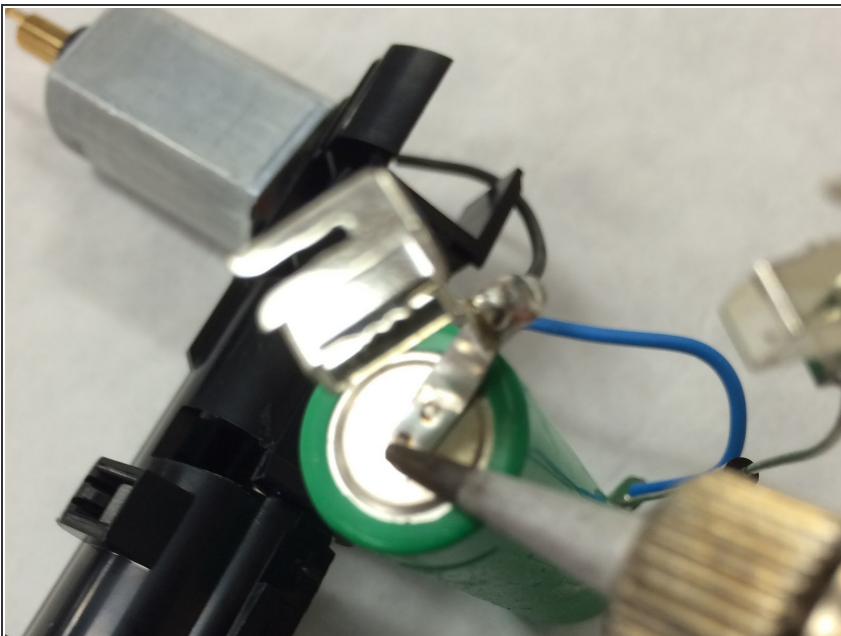



## Step 11




- Once contact tabs have been removed from the battery, the battery can now be removed by hand or by use of a plastic spudger.
- Locate new battery and prepare for soldering in next step.

## Step 12



- Make sure battery is safely secured and re-solder the battery contact tab onto new battery.
  - Check that contact tab is re-soldered onto the original solder.
  - Once solder is dried and cool, toggle the power switch (not the power button) to check that the device is functional.
-  Make sure solder adequately covers the contact tab so the solder will not break in the future

 Solder with caution. Use gloves and eye protection. Solder contains lead, work in a properly ventilated area.



