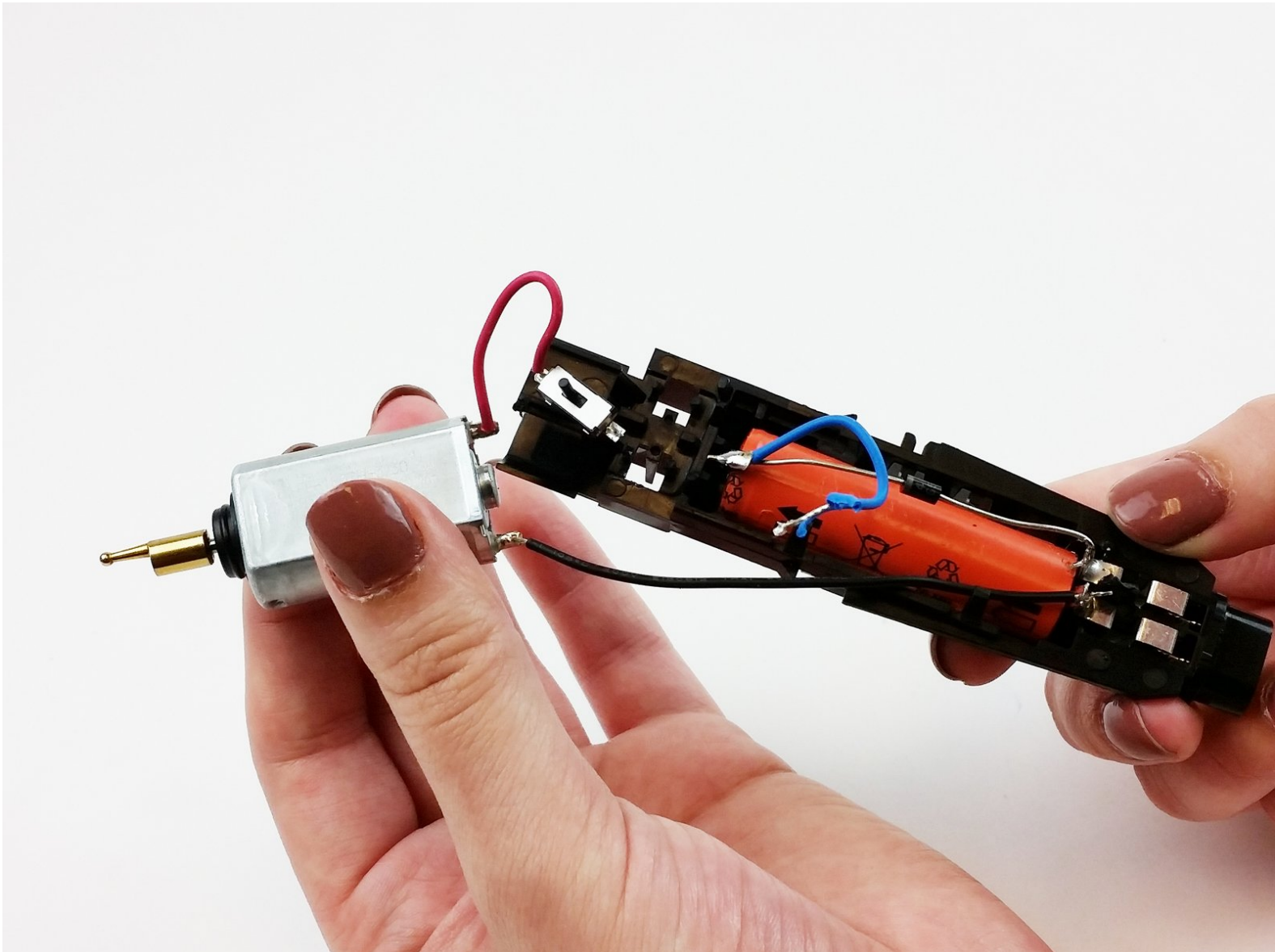




Philips Norelco MultiGroom 3100 Motor Replacement

Replace the motor located within the device.

Written By: ahaharevolution



INTRODUCTION

This guide will teach you how to replace the motor and will require some soldering.



TOOLS:

- [Soldering Iron](#) (1)
 - [iFixit Opening Tools](#) (1)
 - [Spudger](#) (1)
 - [Tweezers](#) (1)
-

Step 1 — Power Button



- Remove the comb from the top of the trimmer.

Step 2



- Grip the attachment and twist it counterclockwise until you hear a click.
- Pull the attachment up to remove it from the trimmer.

Step 3



- Hold the trimmer upright so it is facing you.
- Insert the plastic opening tool in the gap at the top of the power button.

Step 4



- Apply pressure to pry off the power button.

Step 5 — Casing



- Insert the spudger into the bottom of the gray bezel and begin to gently pry it off.

i Separate the bezel one clip at a time so that the clips do not break.

Step 6



- Insert the spudger in the indicated hole and apply a tilting force to loosen the outer casing.
- Pull upward on the top of the inner housing to remove it from the outer casing.

Step 7 — Motor



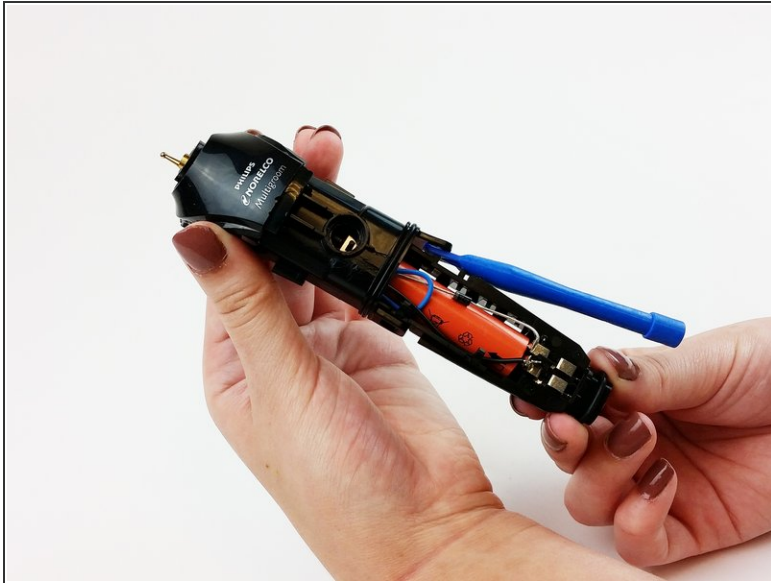
- Use the tweezers to pull out the inner power button.

Step 8



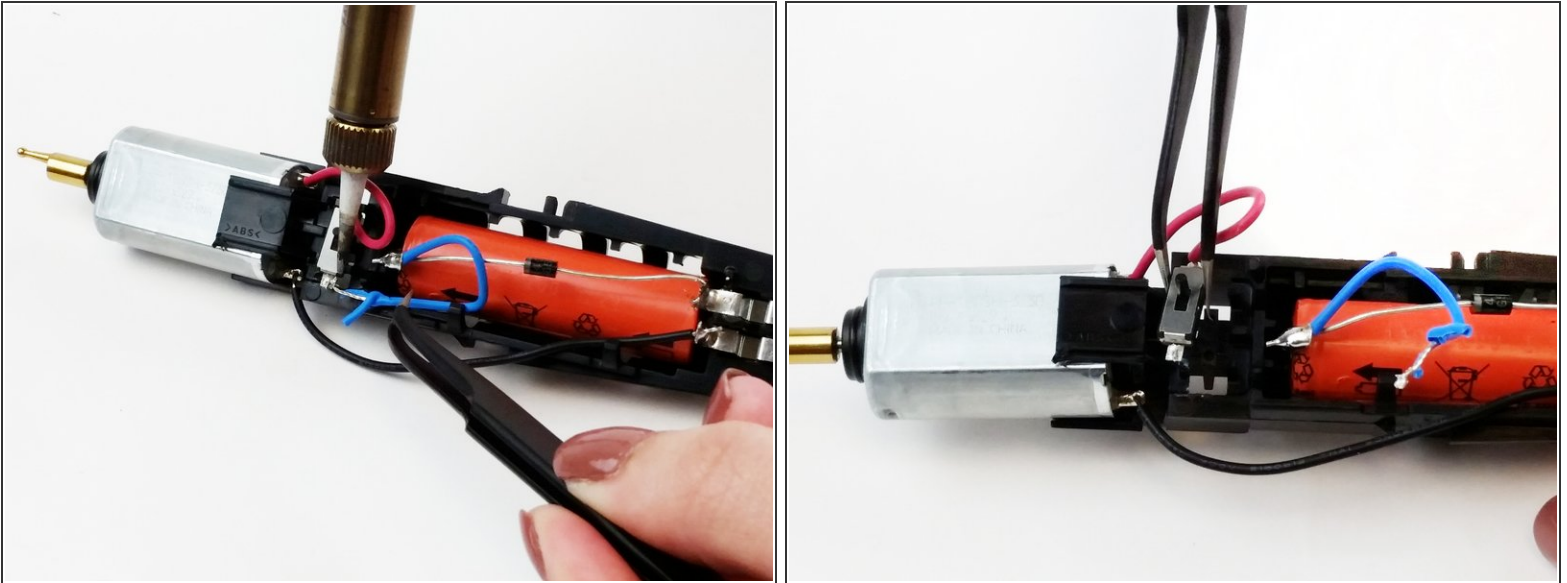
- Use the plastic opening tool to separate the clip on the right side of the inner housing.


Step 9



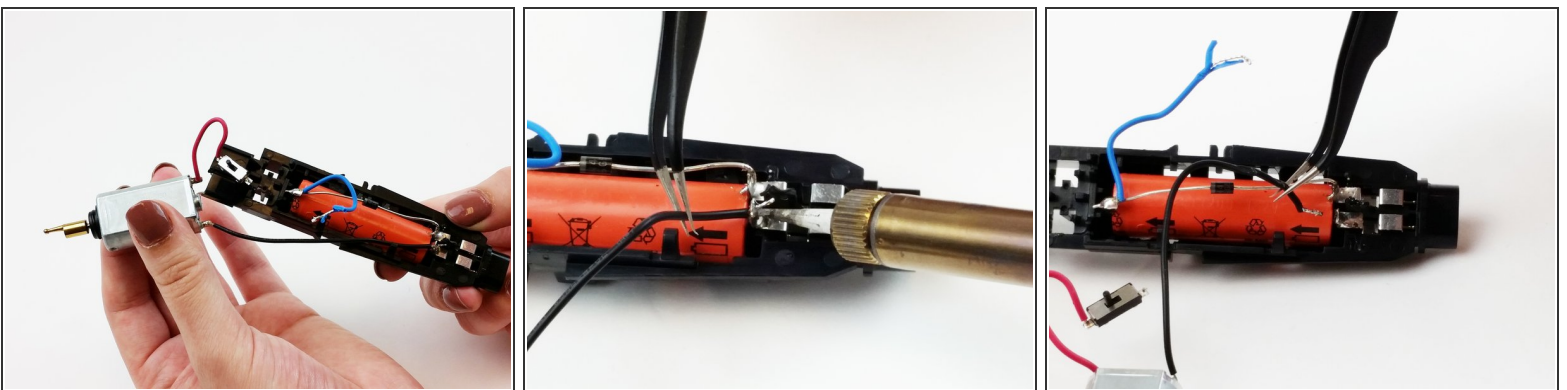
- Push the inner housing up and to the right to separate the left clip from the battery casing.
- Push the inner housing upwards to separate it from the battery casing.

Step 10



- Use the tweezers to hold the wire steady as you unsolder the blue wire from the power switch.
 - Use the tweezers to remove the power switch.
-  For help with soldering check out the [iFixit Soldering Technique Guide](#).

Step 11



- Pull up on the motor to remove it from the battery casing.
- Use the tweezers to hold the black wire steady while unsoldering it from the base of the battery.
- Using the tweezers, pull on the black wire to remove it from the base of the battery.

To reassemble your device, follow these instructions in reverse order.