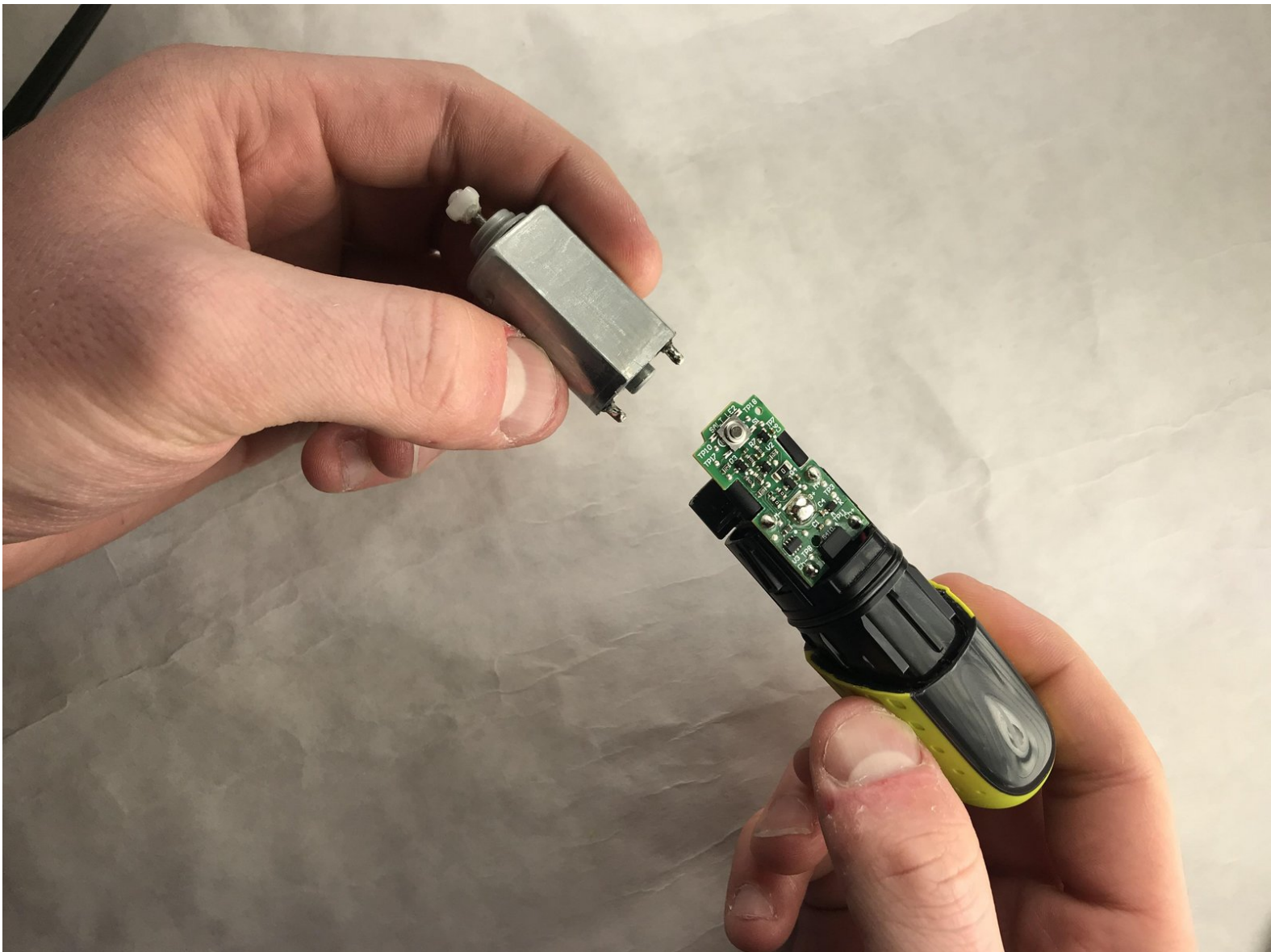




Philips Norelco OneBlade Servo Motor Replacement

Replace the motor in a Philips Norelco OneBlade. This guide requires a soldering kit and a replacement motor.

Written By: Joshua Etchberger



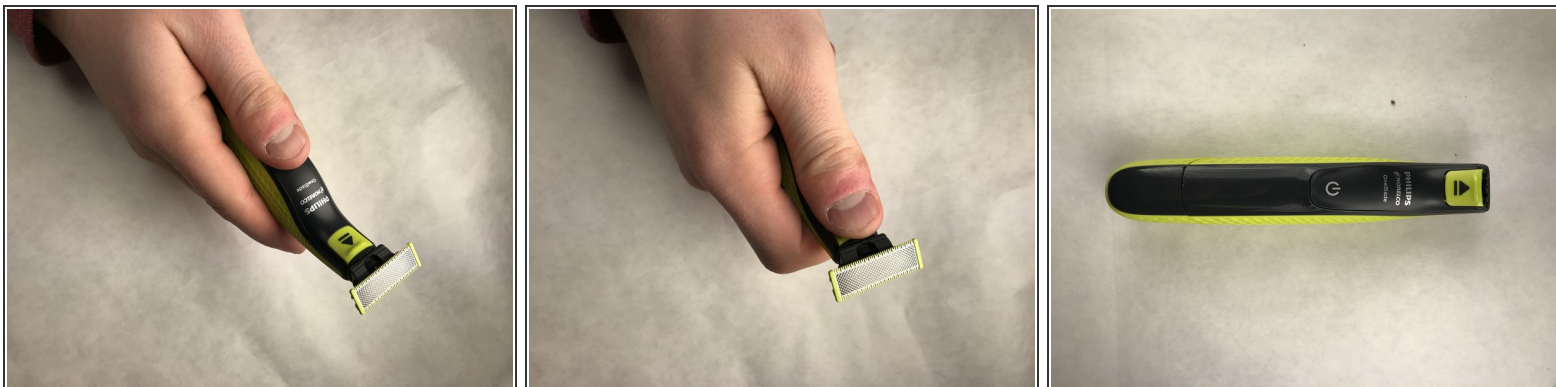
**TOOLS:**

- [Soldering Workstation](#) (1)

**PARTS:**

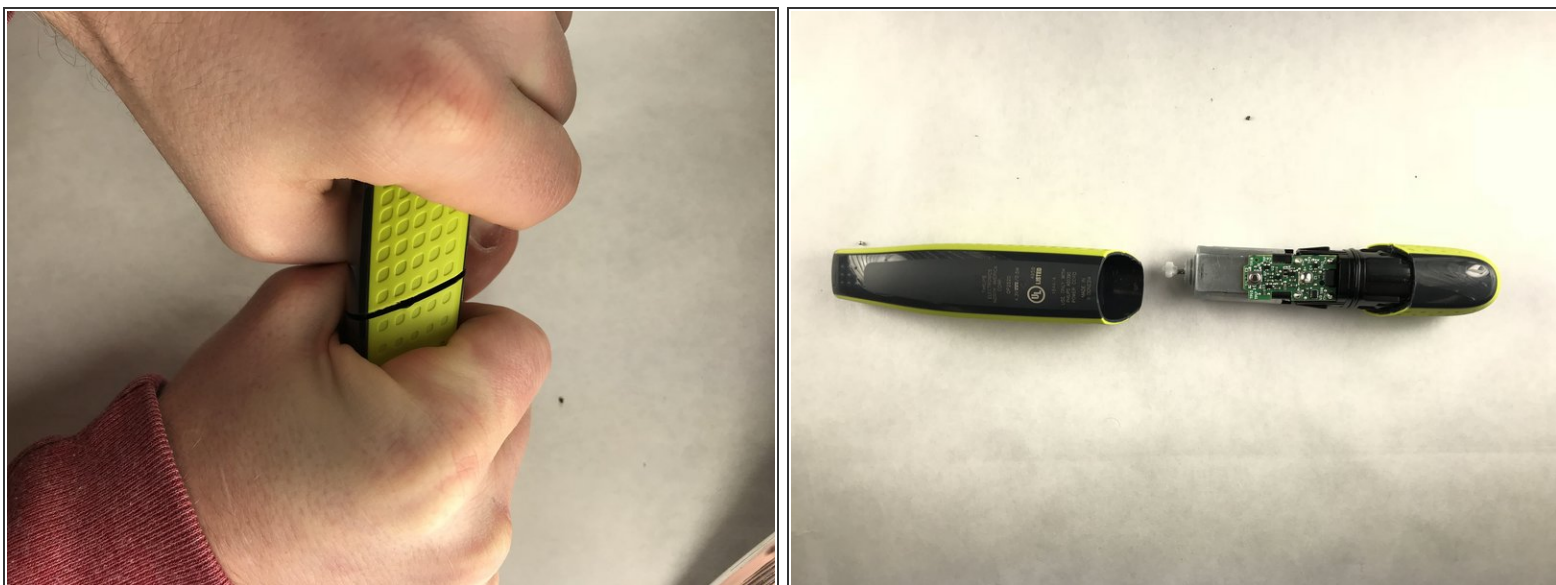
- [Replacement Servo Motor](#) (1)


Step 1 — Servo Motor



- Ensure razor is off and razor blade has been removed.

Step 2



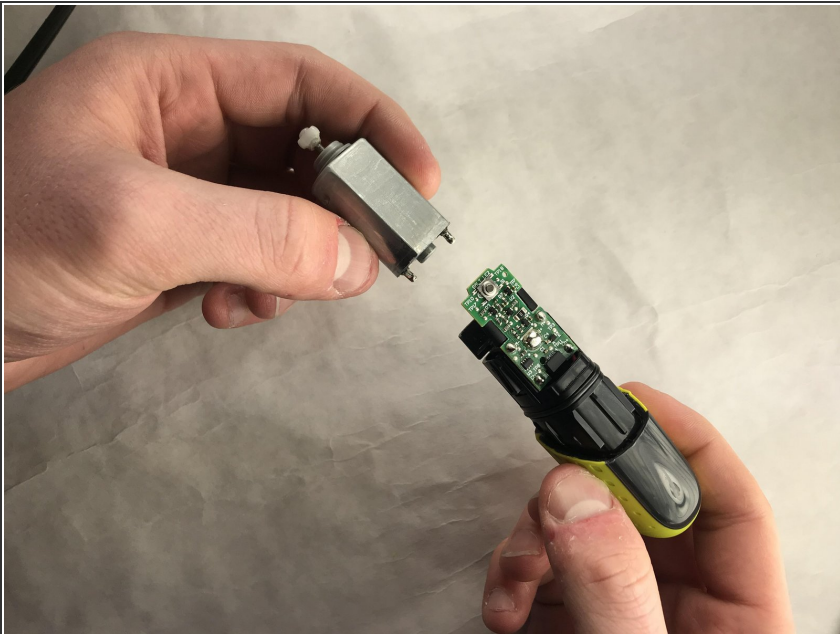
- Locate crease in bottom third of razor.
 - Hold razor in both hands, and place thumbs near crease.
 - Slightly bend the razor near crease.
 - Pull casing apart.
-  Device may turn on upon removal. Turn off razor before continuing.

Step 3



- Locate wires below motor on either side of circuit board.
- Remove solder from each joint using solder removal kit.
- *Do not attempt to remove wires by force.*

Step 4



- Remove new motor from package and place in position.
- Motor should sit above circuit board with connection prongs facing downward. Additionally, center extrusion on bottom of motor should sit in provided hole.

To reassemble your device, follow these instructions in reverse order.

Please dispose of servo motor properly. For recycling information, please contact your local waste management facilities or visit www.recycle.philips.com