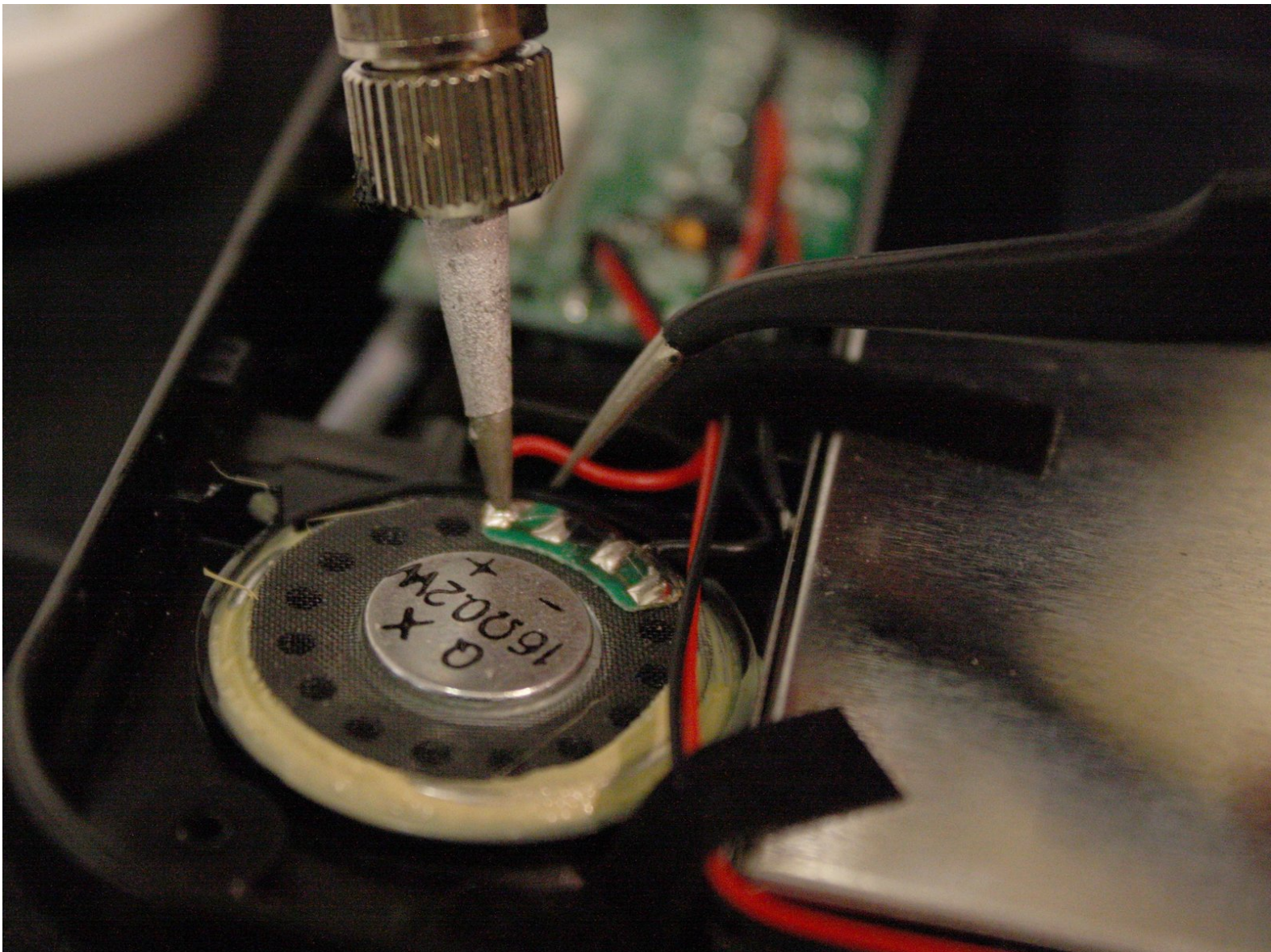




Philips PD9000 37 Internal Speakers Replacement

In this guide we will replace the internal speakers to improve sound quality or repair damaged speakers.

Written By: Alecia Franklin

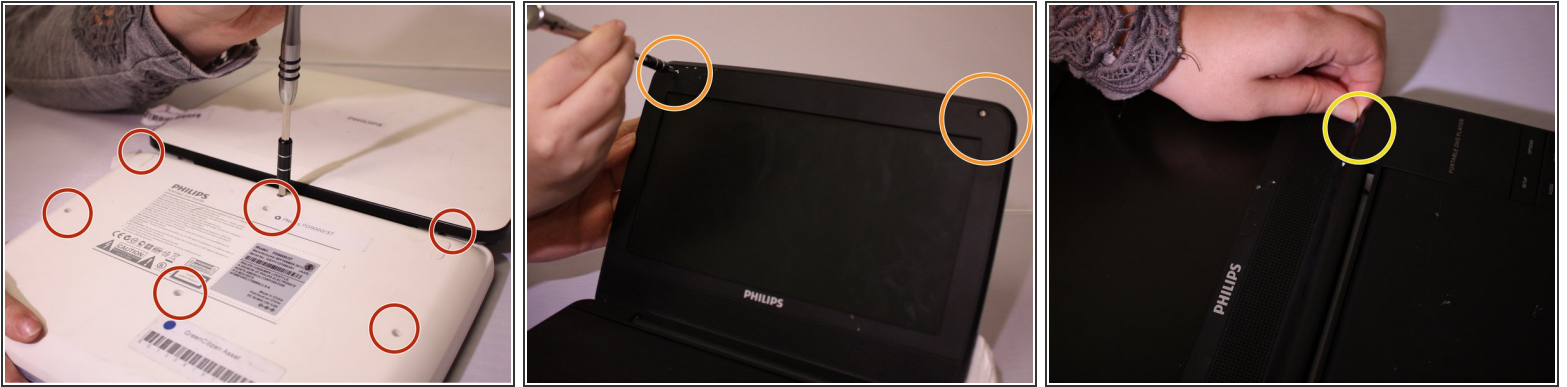




TOOLS:

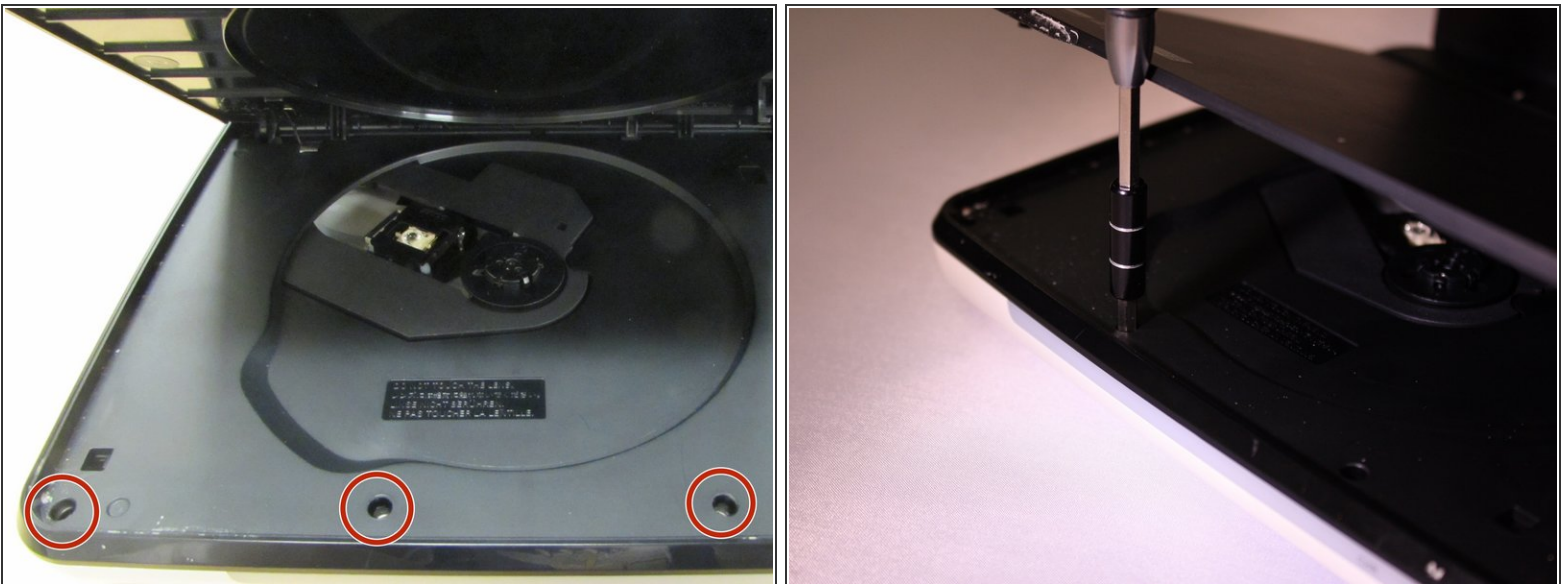
- [iOpener](#) (1)
 - [Metal Spudger](#) (1)
 - [Soldering Iron](#) (1)
 - [Tweezers](#) (1)
-

Step 1 — White Outer Housing



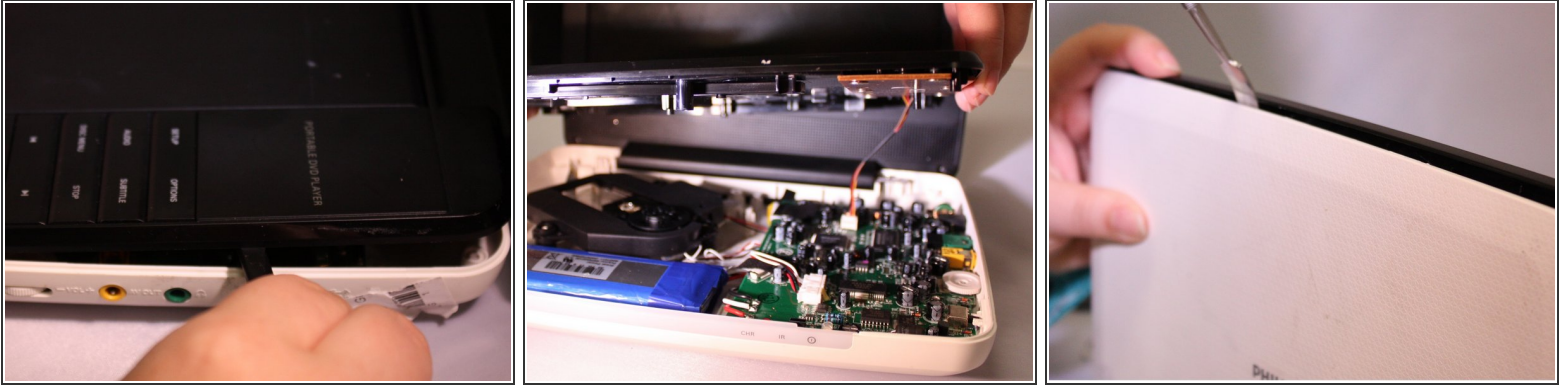
- Lay the player flat so the bottom outside is showing. Using the Phillips #0 screwdriver, unscrew all the housing screws on the bottom of the player.
- Have the player sitting upright, remove the rubber stoppers in order to get to the screw. Unscrew the inside screws by the screen using the Philips #0 screwdriver.
- Remove the rubber stoppers for the bottom two screws as well. Unscrew the middle two screws.

Step 2



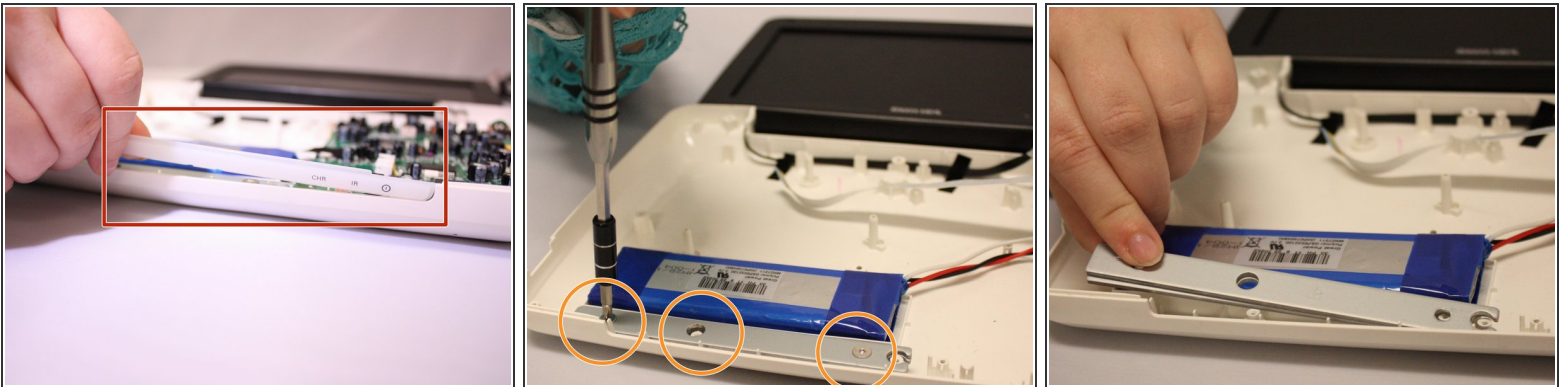
- Open the disc flap and remove the screws inside with the Phillips #0 screwdriver. There will be three screws.

Step 3



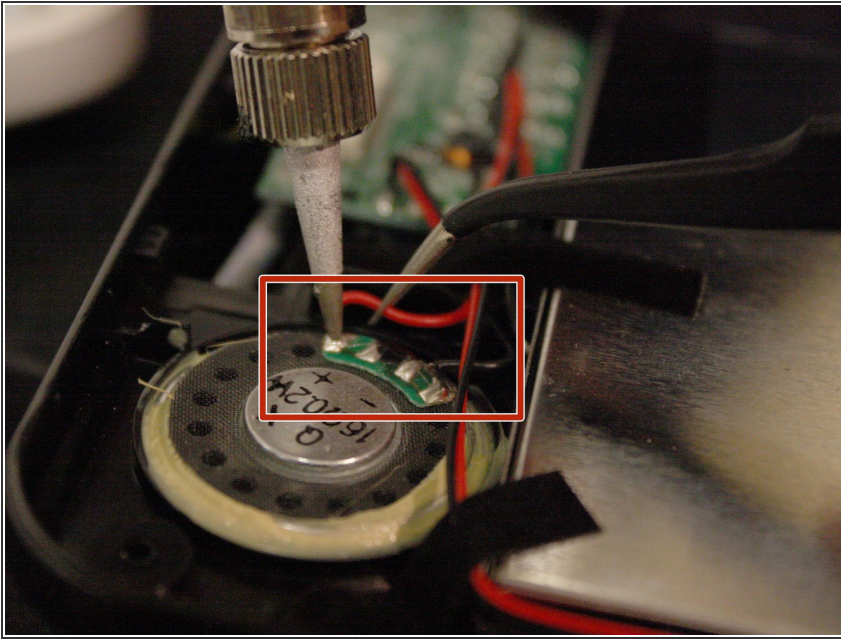
- Start removing the inside black face plate of the player by using a prying method between the white outer housing and the black face plate with a metal spudger.
- Pull the black face plate off once you have pried it from the white housing. The bottom inside layer should pop off.
- Using the same prying method with the metal spudger, start prying off the screens white outer housing.

Step 4



- The light panel on the front can just pop right off.
- To remove the metal bar against the battery, unscrew the screws with the Phillips #0 screwdriver.
- After unscrewing you can just lift the metal bar off.

Step 5 — Internal Speakers



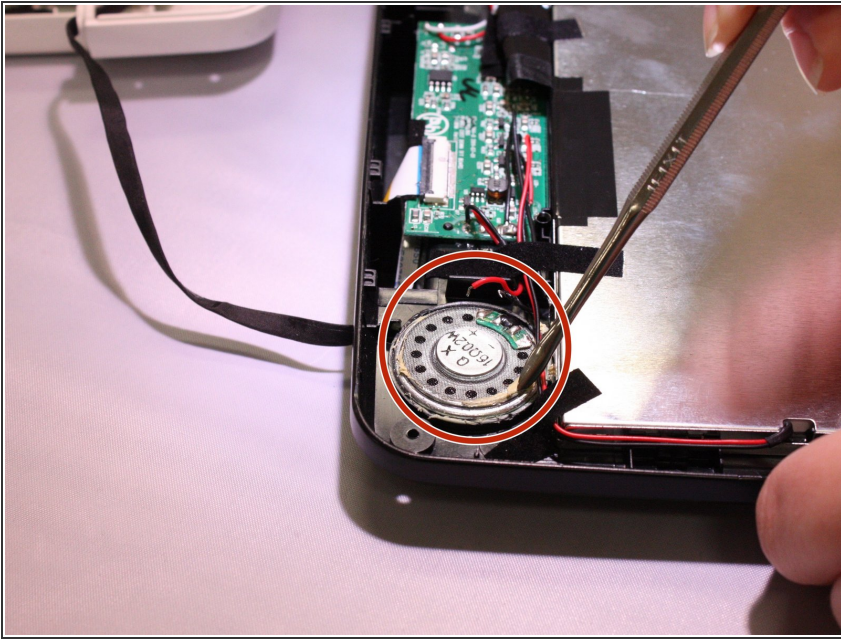
- Desolder the wires connected to the round speakers.

Step 6



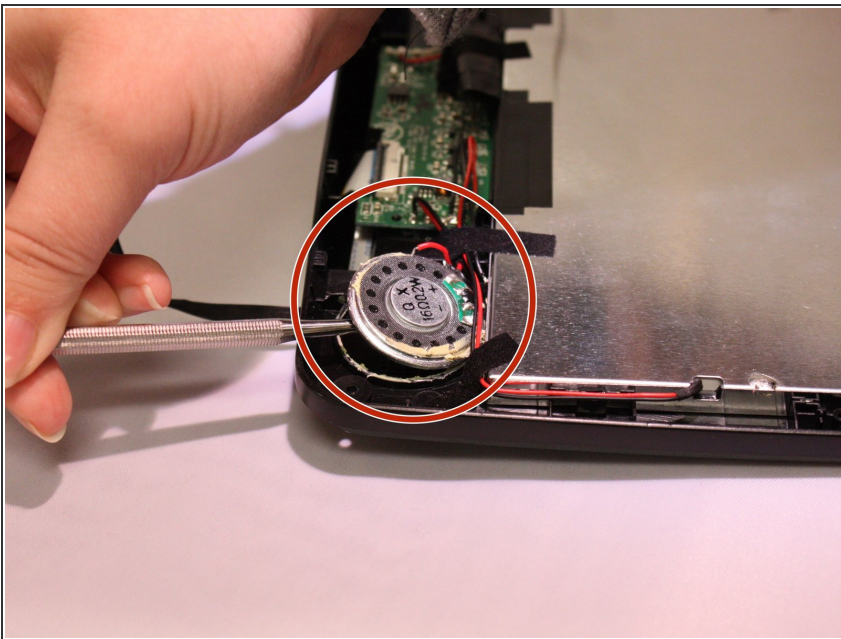
- Place the iOpener over the entire speaker panel to warm the glue.

Step 7



- After the glue is softened, use the metal spudger to scrape the glue away.
- You may need to use the iOpener more than once per speaker, but be sure to follow the instructions for the iOpener so as not to overheat it.

Step 8



- Use the spudger to pry the speaker out of it's setting.

To reassemble your device, follow these instructions in reverse order.