



Philips SBA1060 Capacitor Replacement

Replacing a damaged capacitor in the philips SBA1060.

Written By: April Driscoll



INTRODUCTION

The capacitor is the cylindrical shaped protruding object located on the circuit board. This guide will detail the instructions on how to replace the capacitor.



TOOLS:

- [Phillips #0 Screwdriver](#) (1)
- [iFixit Opening Tools](#) (1)



PARTS:

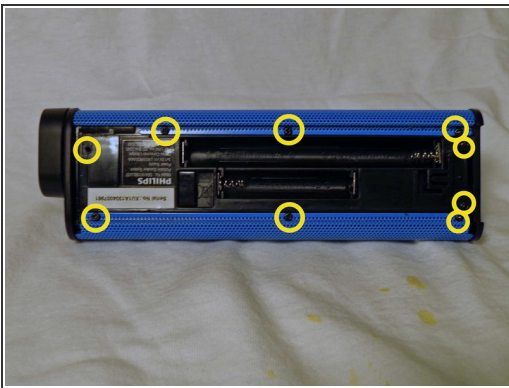
- [Philips Capacitor](#) (1)

Step 1 — Battery Casing



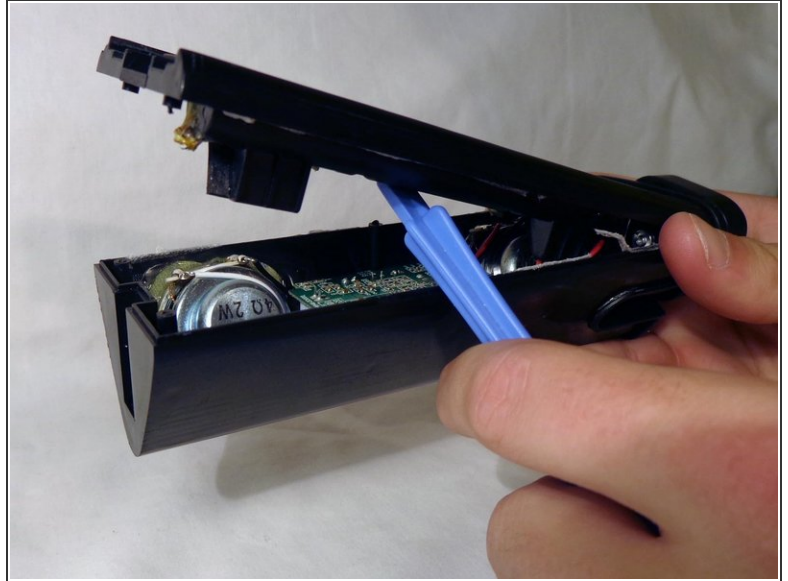
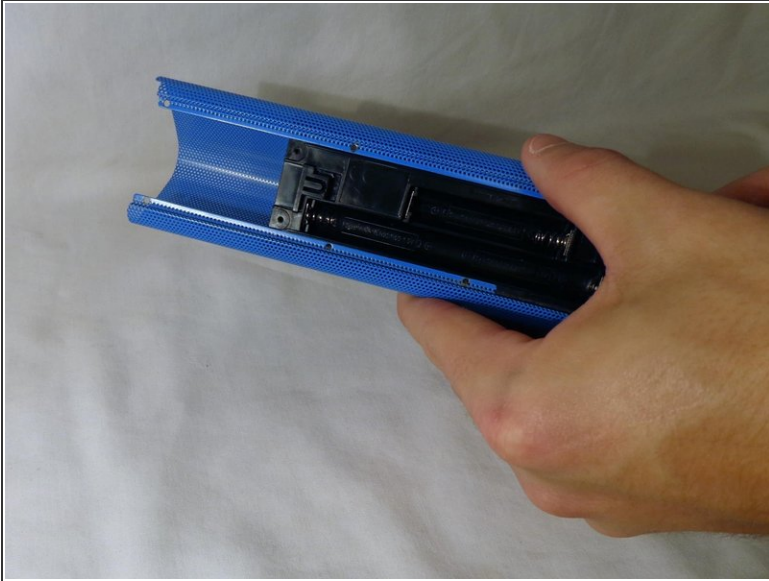
- Remove the back cover by sliding it off.
- Remove the 3 AAA batteries.

Step 2



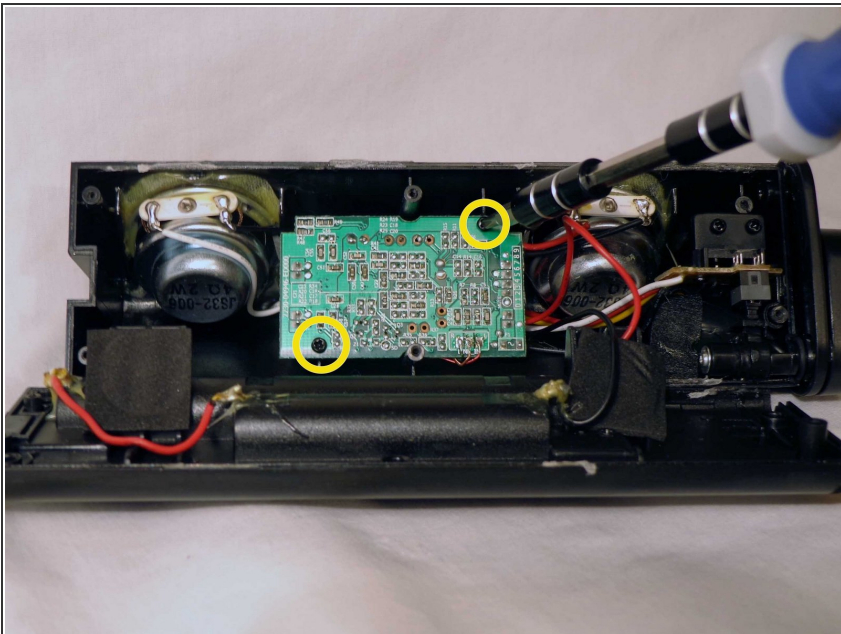
- Unscrew the nine exterior screws on the back panel using a PH0-size Philips-head screwdriver.
 - NOTE: A larger screwdriver head and more force may be required for damaged screws.
- Remove the triangular end piece by pulling it straight off.

Step 3



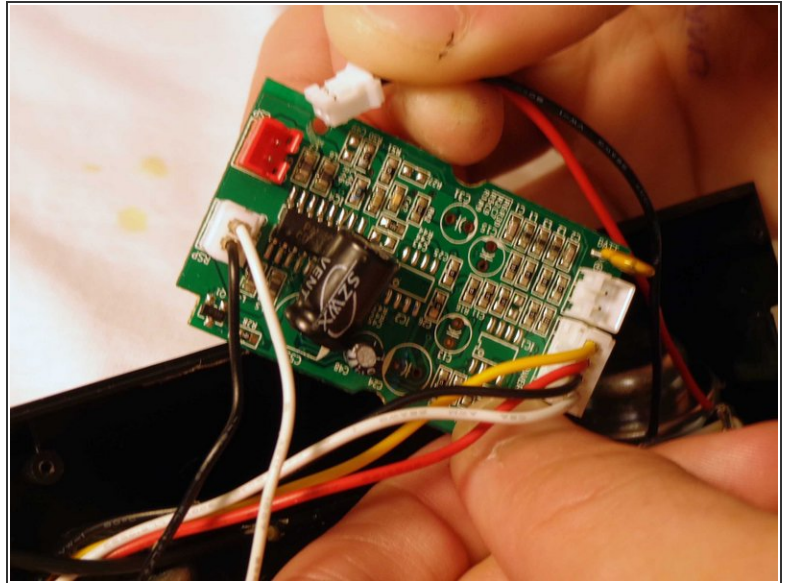
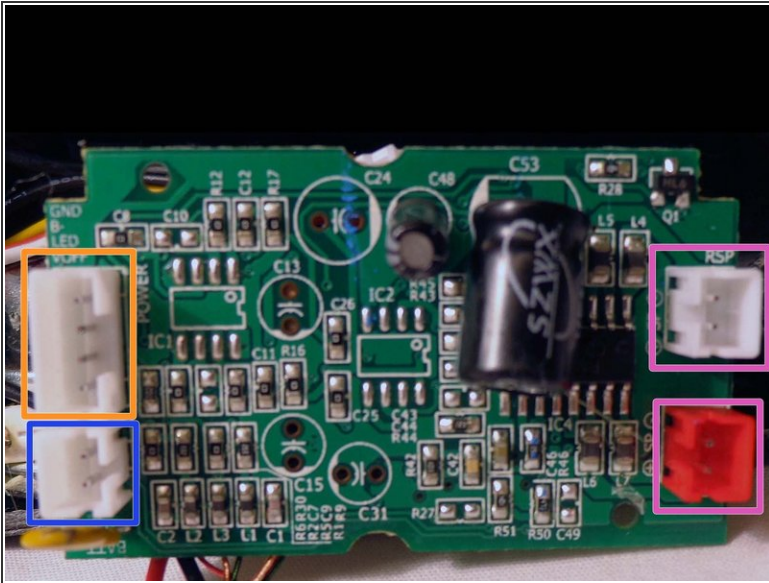
- Remove the colored grill by sliding it off in the direction of the removed end piece.
- Pry off the back battery panel with the plastic opening tool.
- NOTE: Be careful to avoid tearing any wires.

Step 4 — Capacitor



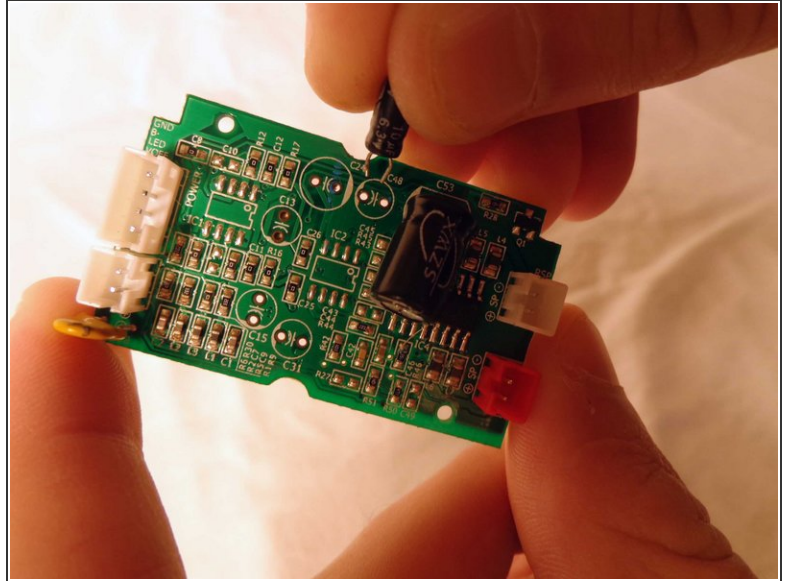
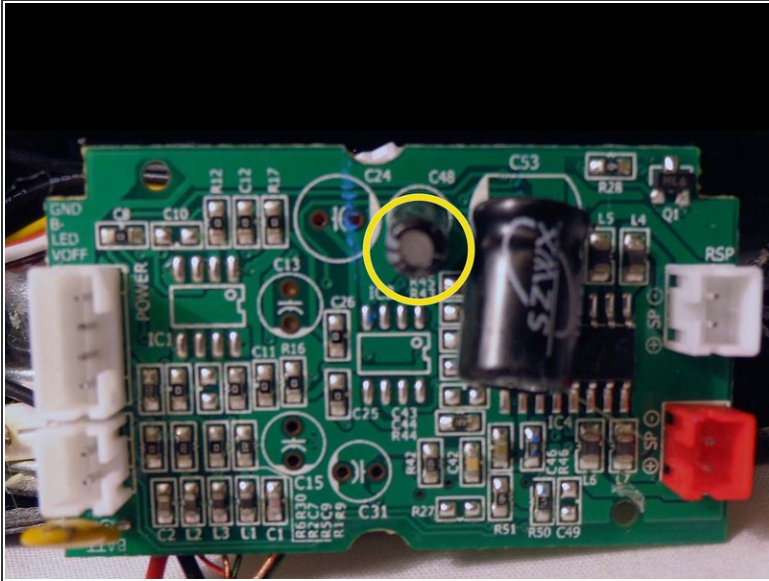
- Remove the two screws on opposite ends of the circuit board with the PH0 size philips head screw driver.
- Slowly pull the circuit board out of the device
- NOTE: Be careful not to damage any of the wires protruding from the back of the circuit board.

Step 5



- Flip the device and remove the battery plug from the circuit board by pulling out the plugs to fully remove back panel.
- Remove the speaker plugs from the circuit board by pulling out the plugs. They are located on opposite sides of the circuit board.
 - ⓘ NOTE: When reassembling, note that the speaker with the red wire goes to the red plug, and the speaker with the white wire goes to the adjacent white plug.
- Remove the light plug from the circuit board.
 - ⓘ NOTE: This plug is twice as wide as the speaker and battery plugs.

Step 6



- Locate the capacitor and carefully slide it out of the circuit board.
 - NOTE: The capacitor will be a cylindrical object protruding vertically near the center of the circuit board.
- Slide the prongs of the replacement capacitor into the two holes of the circuit board where the original capacitor was removed from.
- Reassemble the speaker.

To reassemble your device, follow these instructions in reverse order.