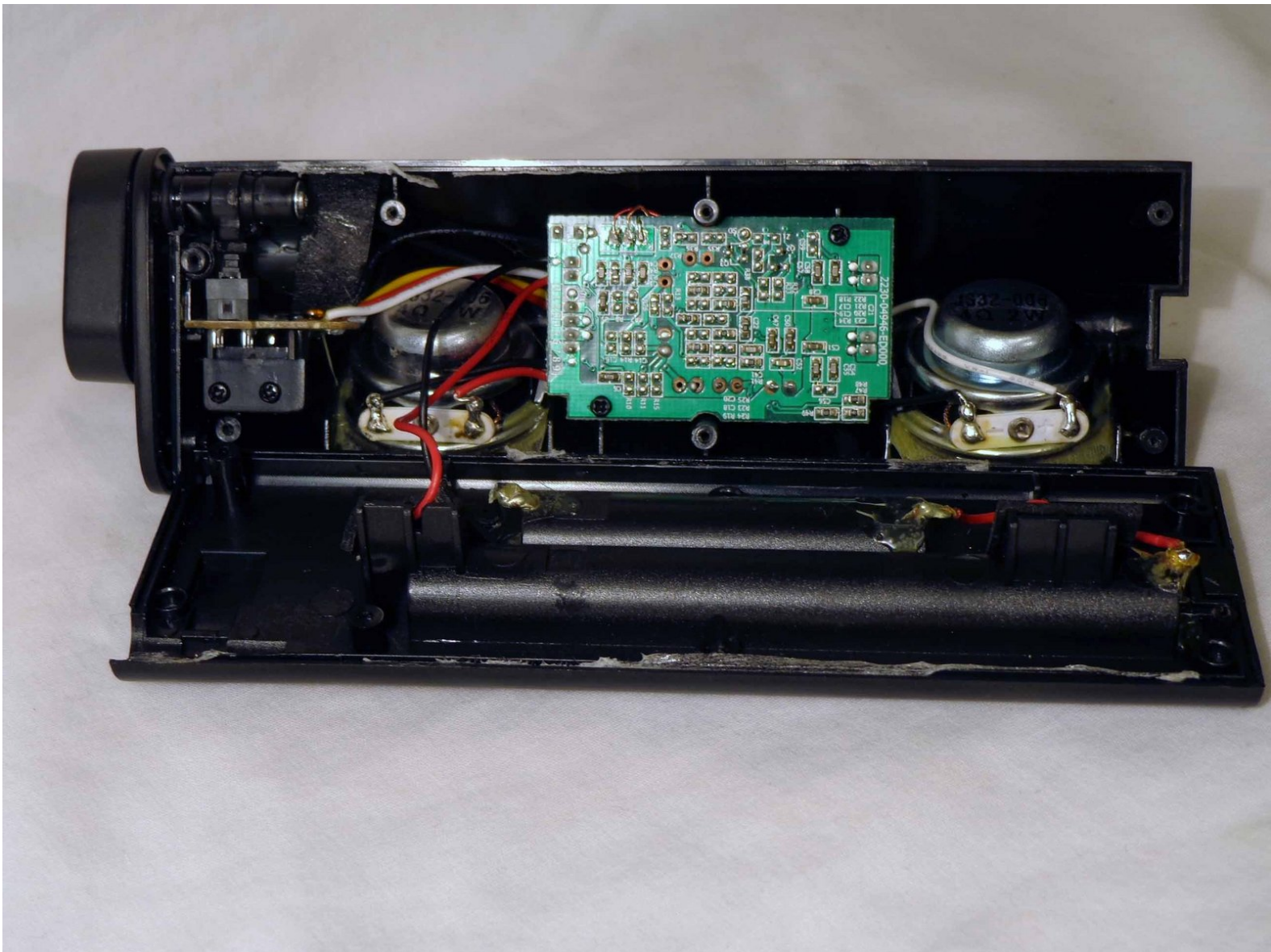




# Philips SBA1060 Circuit Board Replacement

Replacement of a damaged circuit board for the philips SBA1610 portable speaker.

Written By: April Driscoll



---

## INTRODUCTION

The circuit board is the large, flat, green rectangle in the middle of the device. This guide will detail the steps in how to replace the circuit board.

---



### TOOLS:

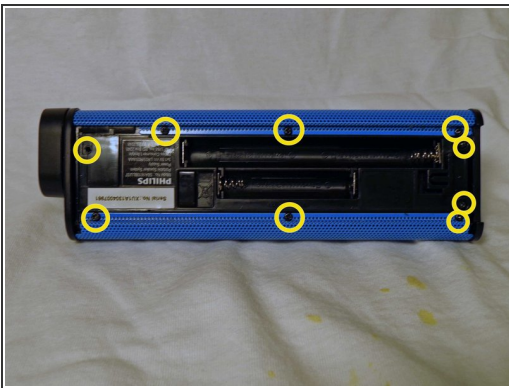
- [Phillips #0 Screwdriver](#) (1)
  - [iFixit Opening Tools](#) (1)
-

## Step 1 — Battery Casing



- Remove the back cover by sliding it off.
- Remove the 3 AAA batteries.

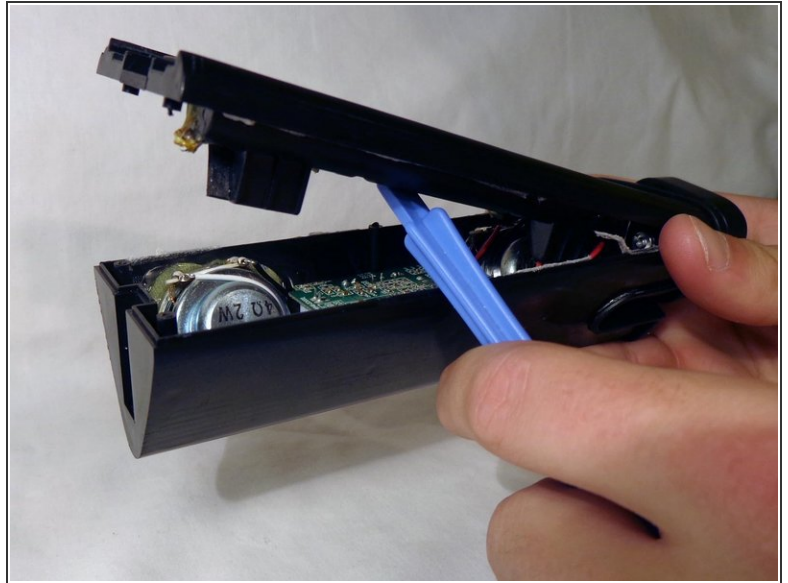
## Step 2



- Unscrew the nine exterior screws on the back panel using a PH0-size Philips-head screwdriver.
  - NOTE: A larger screwdriver head and more force may be required for damaged screws.
- Remove the triangular end piece by pulling it straight off.

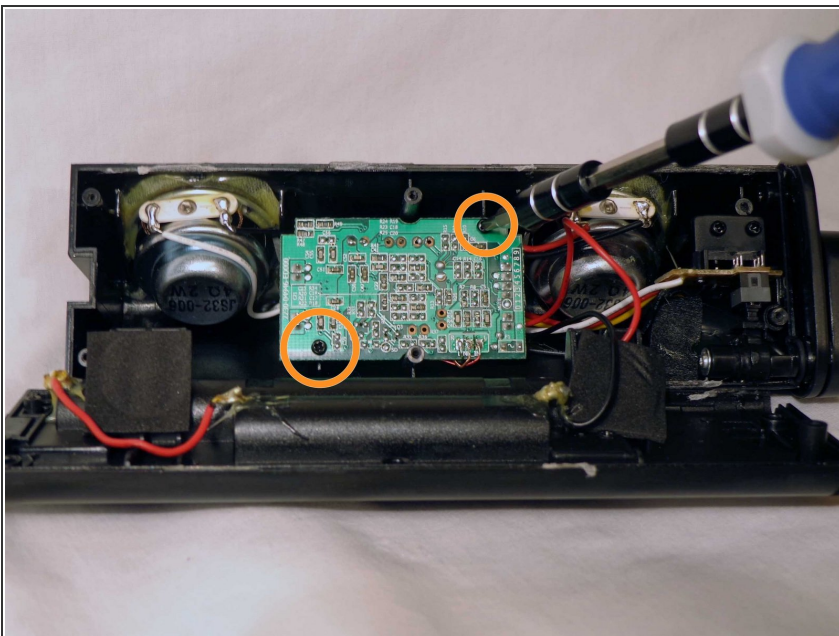


### Step 3



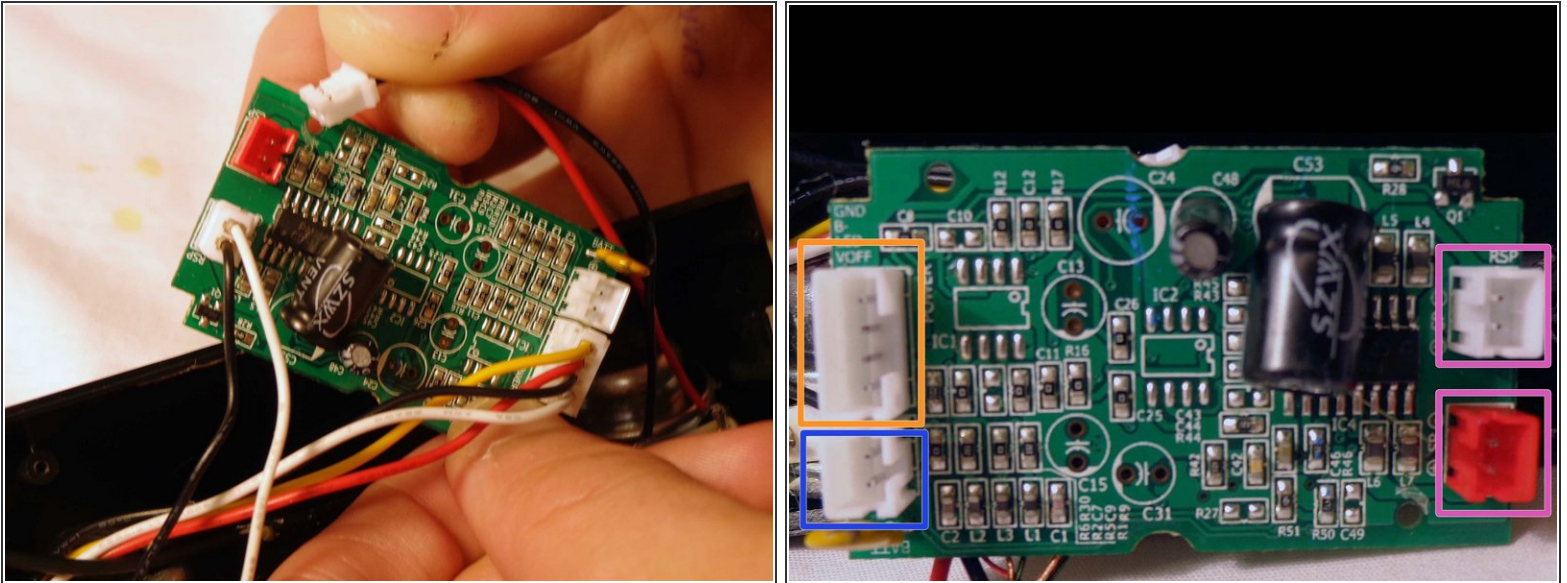
- Remove the colored grill by sliding it off in the direction of the removed end piece.
- Pry off the back battery panel with the plastic opening tool.
- NOTE: Be careful to avoid tearing any wires.

### Step 4 — Circuit Board



- Remove the two screws on opposite ends of the circuit board with the PH0 size philips head screw driver.
- Remove the damaged circuit board from the device.

## Step 5



- Remove the battery plug from the circuit board by pulling out the plugs to fully remove back panel.
- Remove the speaker plugs from the circuit board by pulling out the plugs. They are located on opposite sides of the circuit board.
- ⓘ NOTE: When reassembling, note that the speaker with the red wire goes to the red plug, and the speaker with the white wire goes to the adjacent white plug.
- Remove the light plug from the circuit board.
- ⓘ NOTE: This plug is twice as wide as the speaker and battery plugs.
- Reassemble the device.

To reassemble your device, follow these instructions in reverse order.