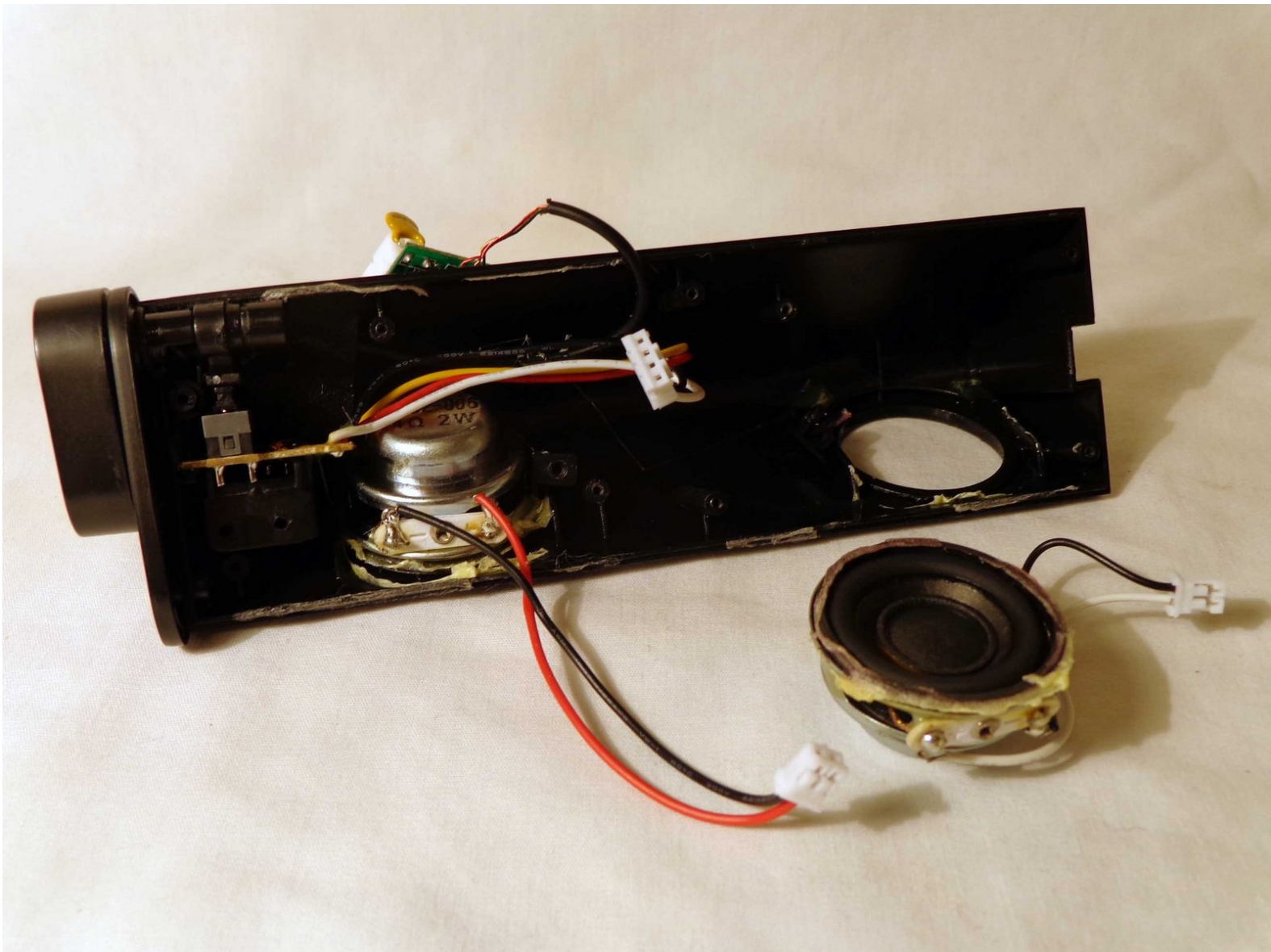




# Philips SBA1060 Speaker Replacement

Replacing a damaged speaker for the Philips portable speaker.

Written By: April Driscoll



# INTRODUCTION

The speakers are the two circular objects inside the device. This guide will detail the steps in how to replace a damaged speaker.



## TOOLS:

- [Phillips #0 Screwdriver](#) (1)
- [Spudger](#) (1)
- [iFixit Opening Tools](#) (1)
- [Polyurethane Glue](#) (1)



## PARTS:

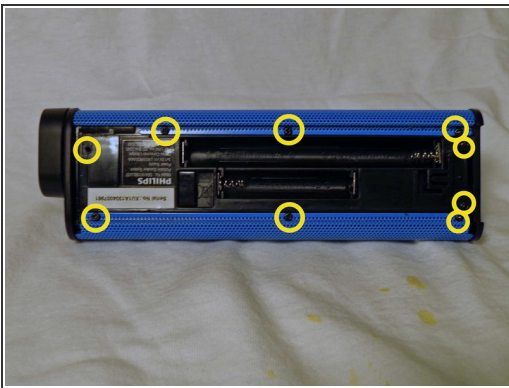
- [Speaker](#) (1)

## Step 1 — Battery Casing



- Remove the back cover by sliding it off.
- Remove the 3 AAA batteries.

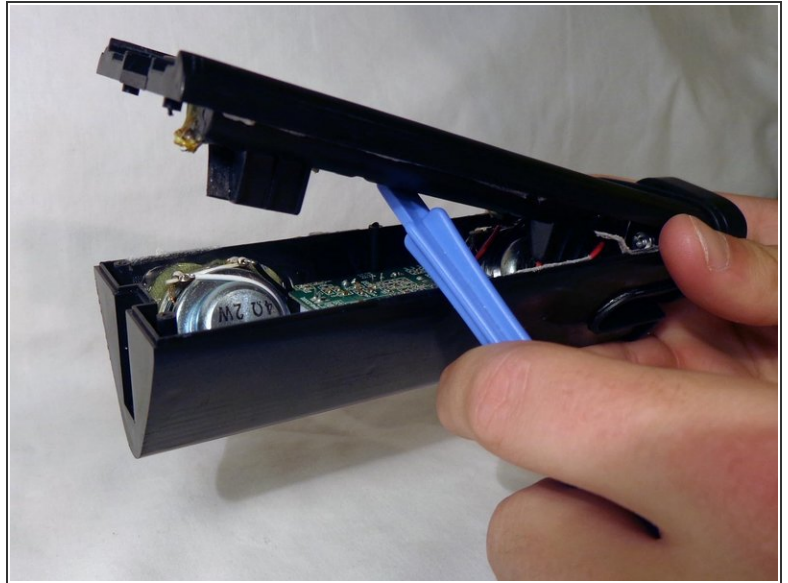
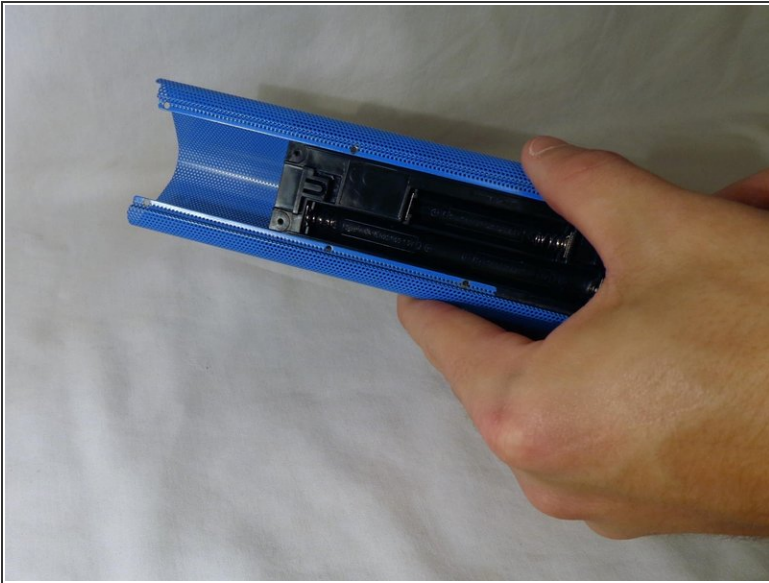
## Step 2



- Unscrew the nine exterior screws on the back panel using a PH0-size Philips-head screwdriver.
  - NOTE: A larger screwdriver head and more force may be required for damaged screws.
- Remove the triangular end piece by pulling it straight off.

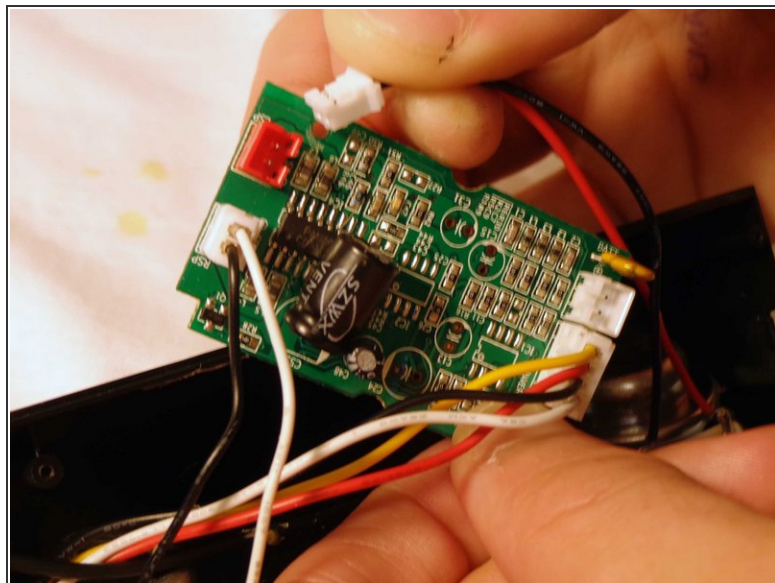
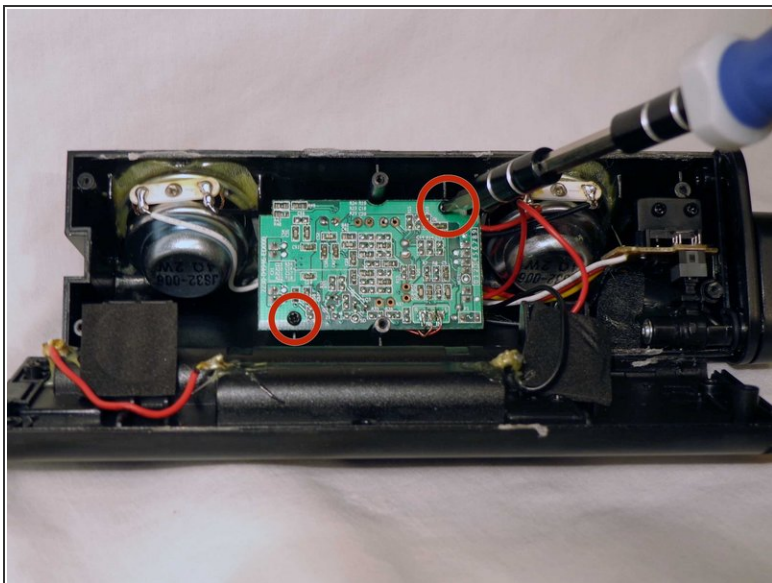


### Step 3



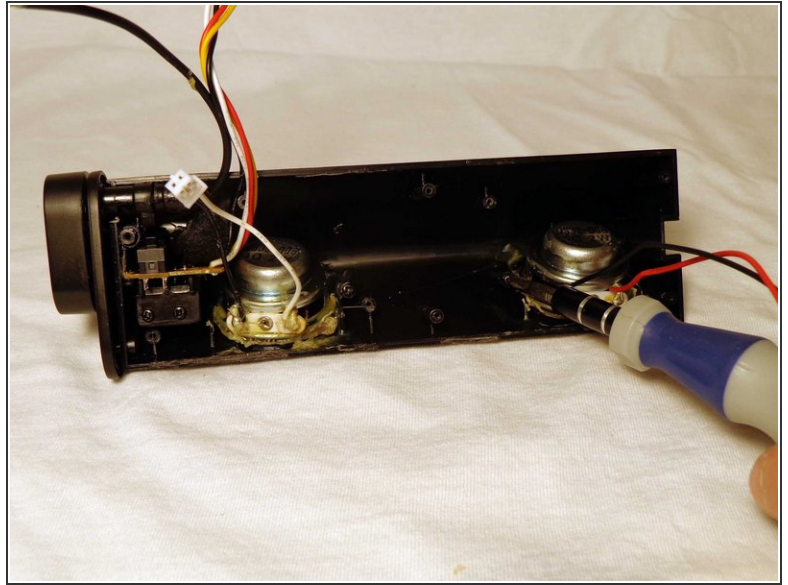
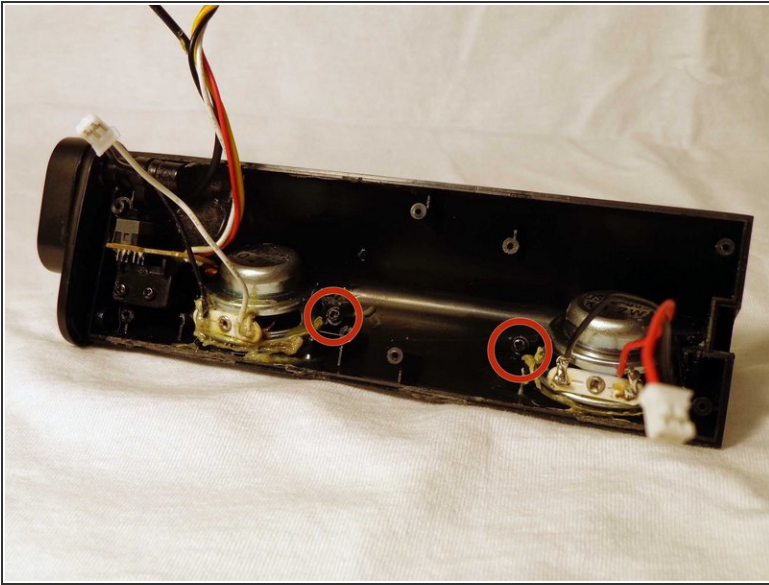
- Remove the colored grill by sliding it off in the direction of the removed end piece.
- Pry off the back battery panel with the plastic opening tool.
  - NOTE: Be careful to avoid tearing any wires.

## Step 4 — Speaker



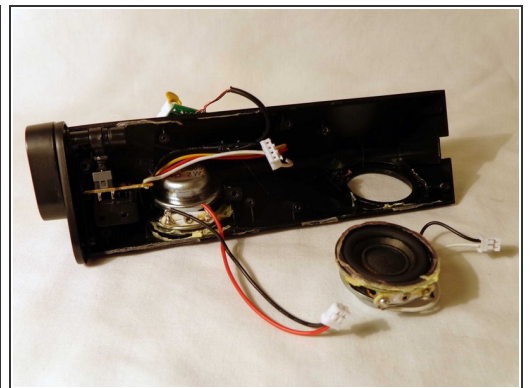
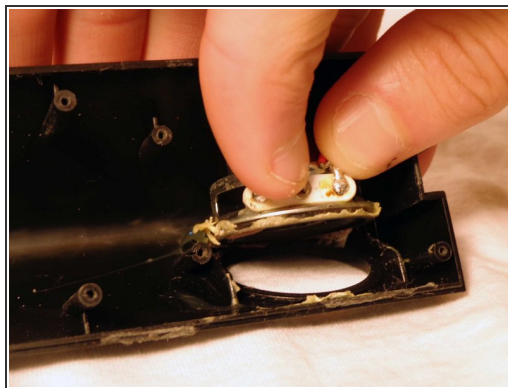
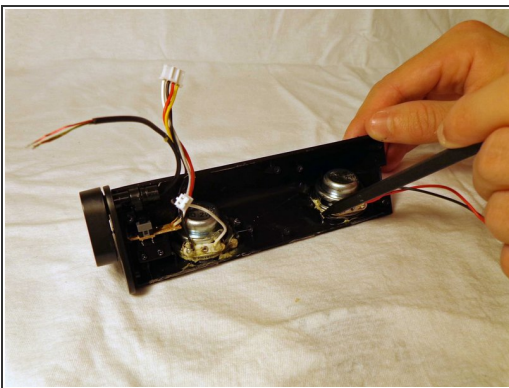
- Remove the circuit board by unscrewing the two interior screws located on the circuit board.
- Pull out the battery plugs from the circuit board by pulling out the plugs to fully remove the back panel from the rest of the speaker.

## Step 5



- Locate the speaker needing replacing.
- Remove the one screw holding the speaker in place with a PH0 size philips head screw driver.

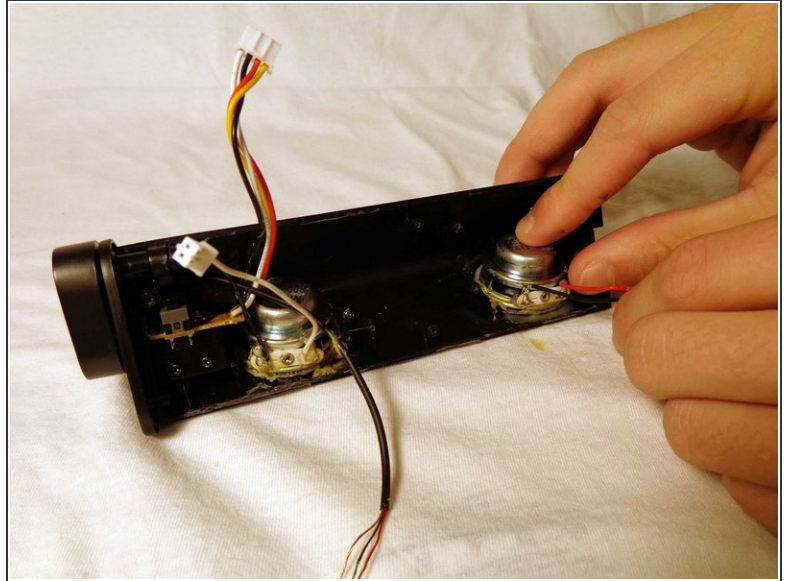
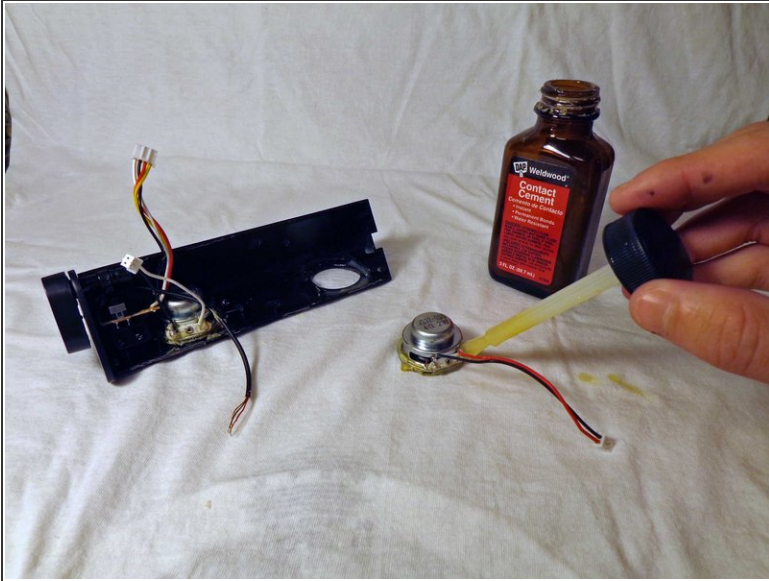
## Step 6



- Score the glue that is holding the speaker in place with the spudger, and use your hands to pry off the speaker.



## Step 7



- Using a non-conductive glue, carefully seal the speaker to the casing.
- Follow the glue instructions as set by the manufacturers. Let the glue set the appropriate amount of time.
- Reassemble the device

To reassemble your device, follow these instructions in reverse order.