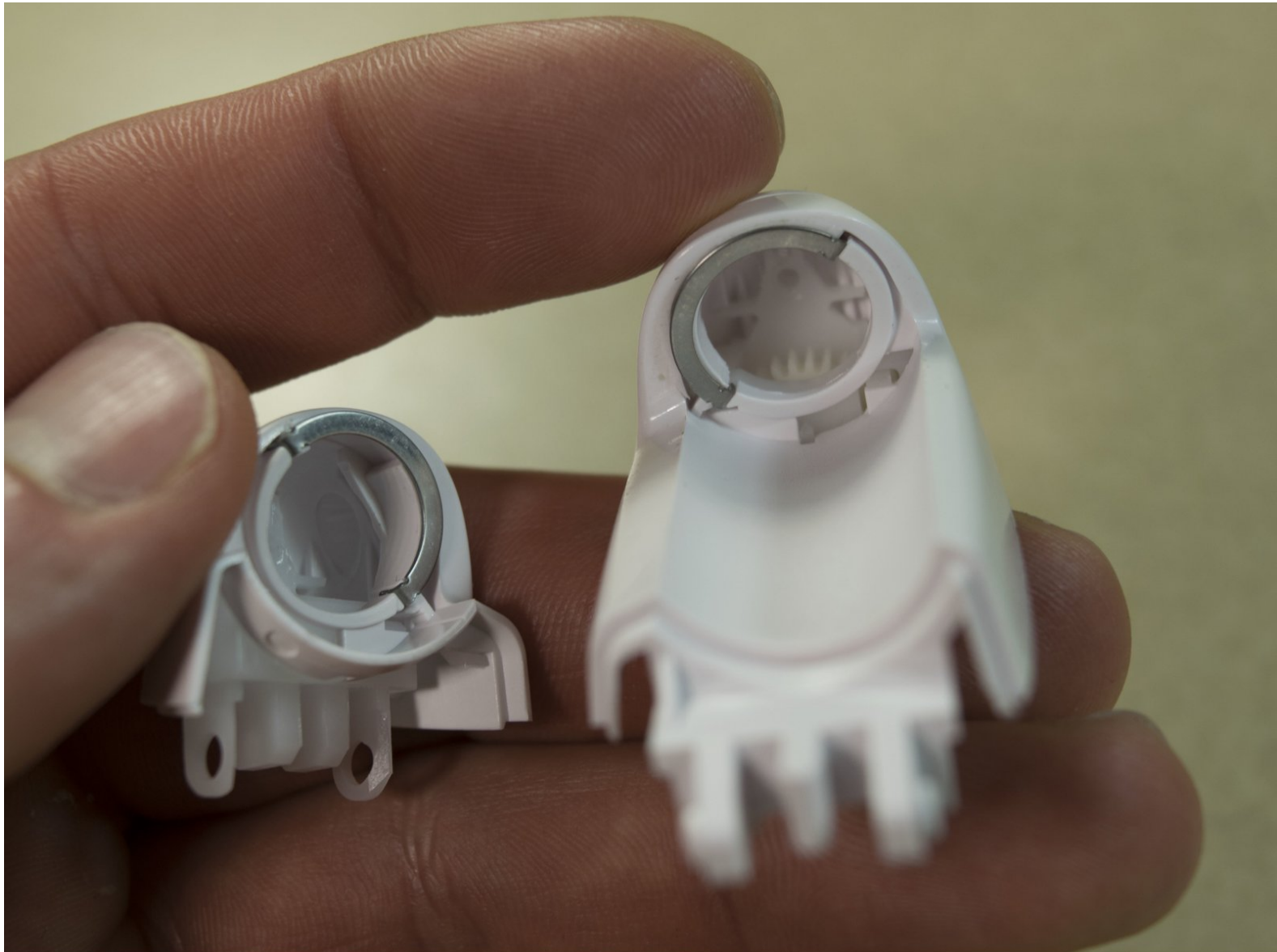




Philips Satinelle Metal Rolling Tracks Replacement

This guide will show how to replace the metal rolling tracks of your Philips Satinelle.

Written By: Nathan Christian



INTRODUCTION

If you need to replace the metal rolling tracks of your Philips Satinelle, use this guide.



TOOLS:

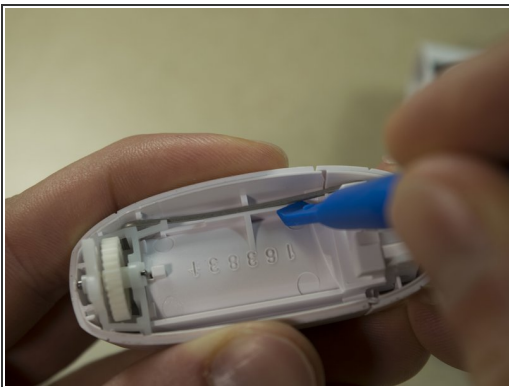
- [Metal Spudger](#) (1)
 - [iFixit Opening Tools](#) (1)
 - [Large Needle Nose Pliers](#) (1)
-

Step 1 — Philips Satinelle Disassembly



- Unplug the device and remove the purple guard.
- Remove the head by pressing the right side of the head (with the device facing away from you).
- You will hear a 'click' and the head will become dislodged from the body of the device.

Step 2



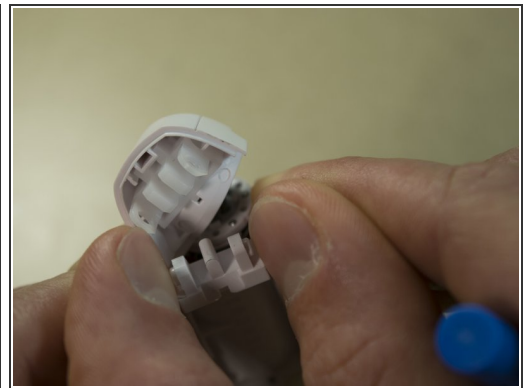
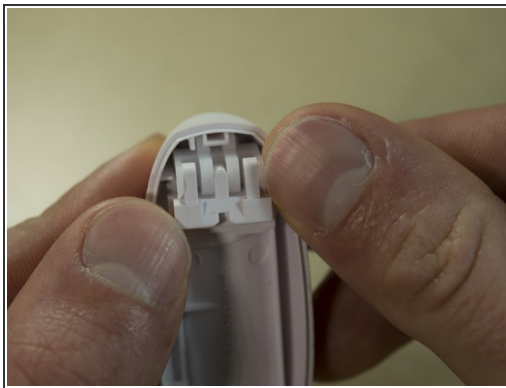
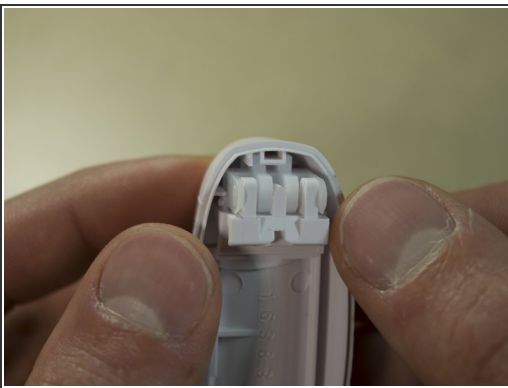
- While wearing safety glasses, use a plastic opening tool to pry from right to left to pry out the tensor clip.
- Be careful not to lose the clip. It will likely fly off when it releases.

Step 3



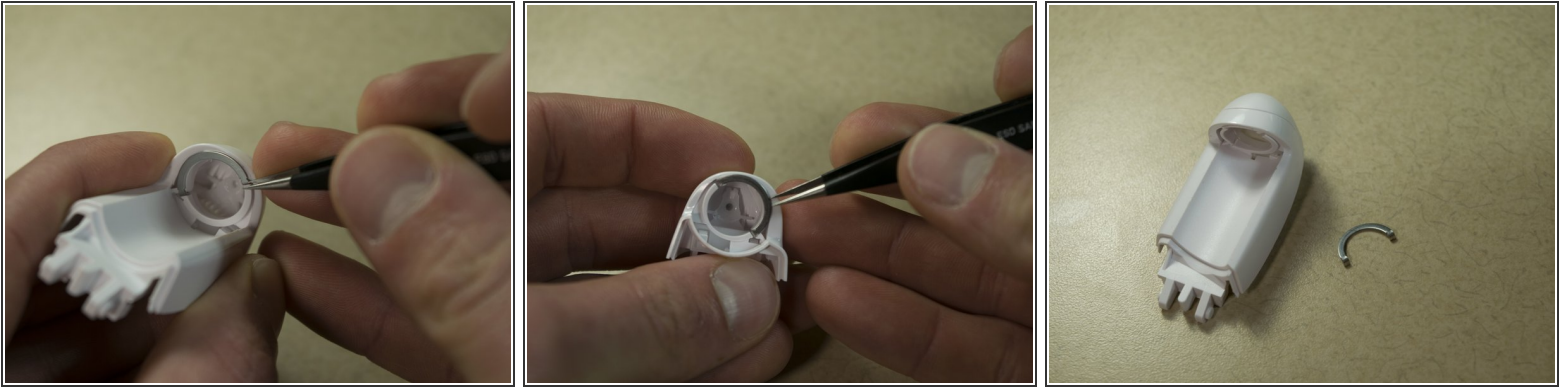
- The left side will swing down.
- Remove the Tweezers.

Step 4



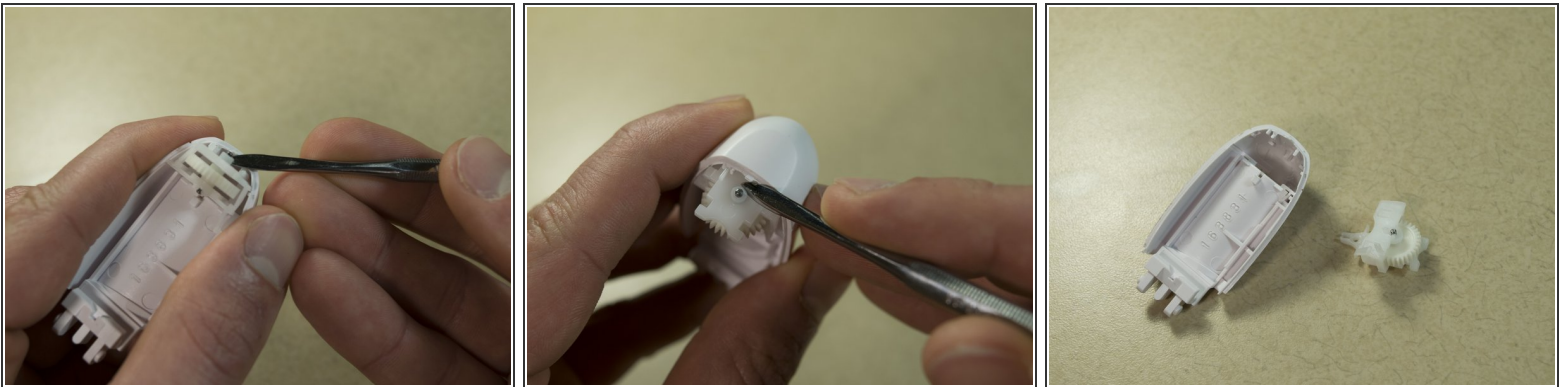
- Remove the plastic component that swings down.
- Use fingernails to lift clips from stubs.

Step 5



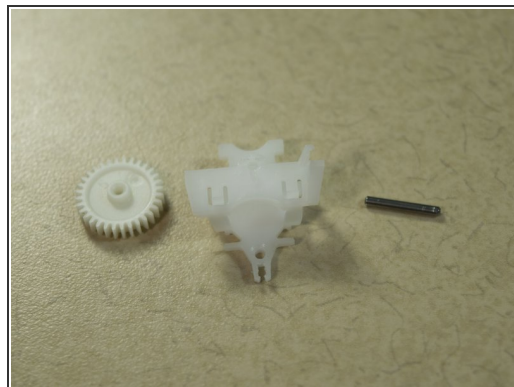
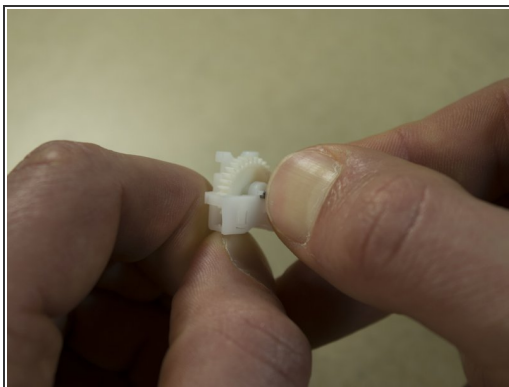
- Using Needle Nose pliers remove metal roller track on both sides of the Tweezers Head.

Step 6



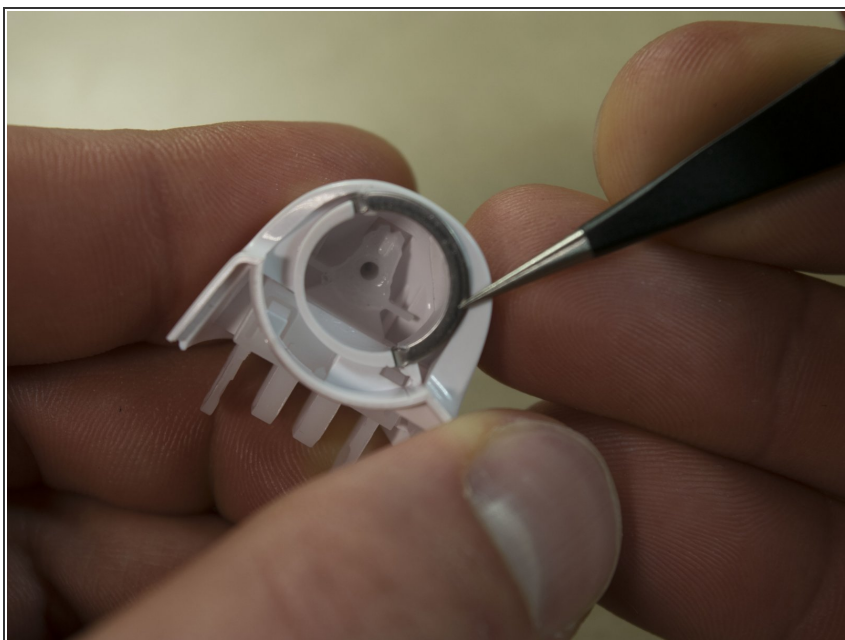
- Use a spudger to pry the gear housing unit from the base.

Step 7



- Use your thumbnail and a pair of needle nose pliers to push out the gear housing retention pin.

Step 8 — Metal Rolling Tracks Replacement



- Replace Metal Roller Tracks on both sides of the Tweezer Head.

To reassemble your device, follow these instructions in reverse order.