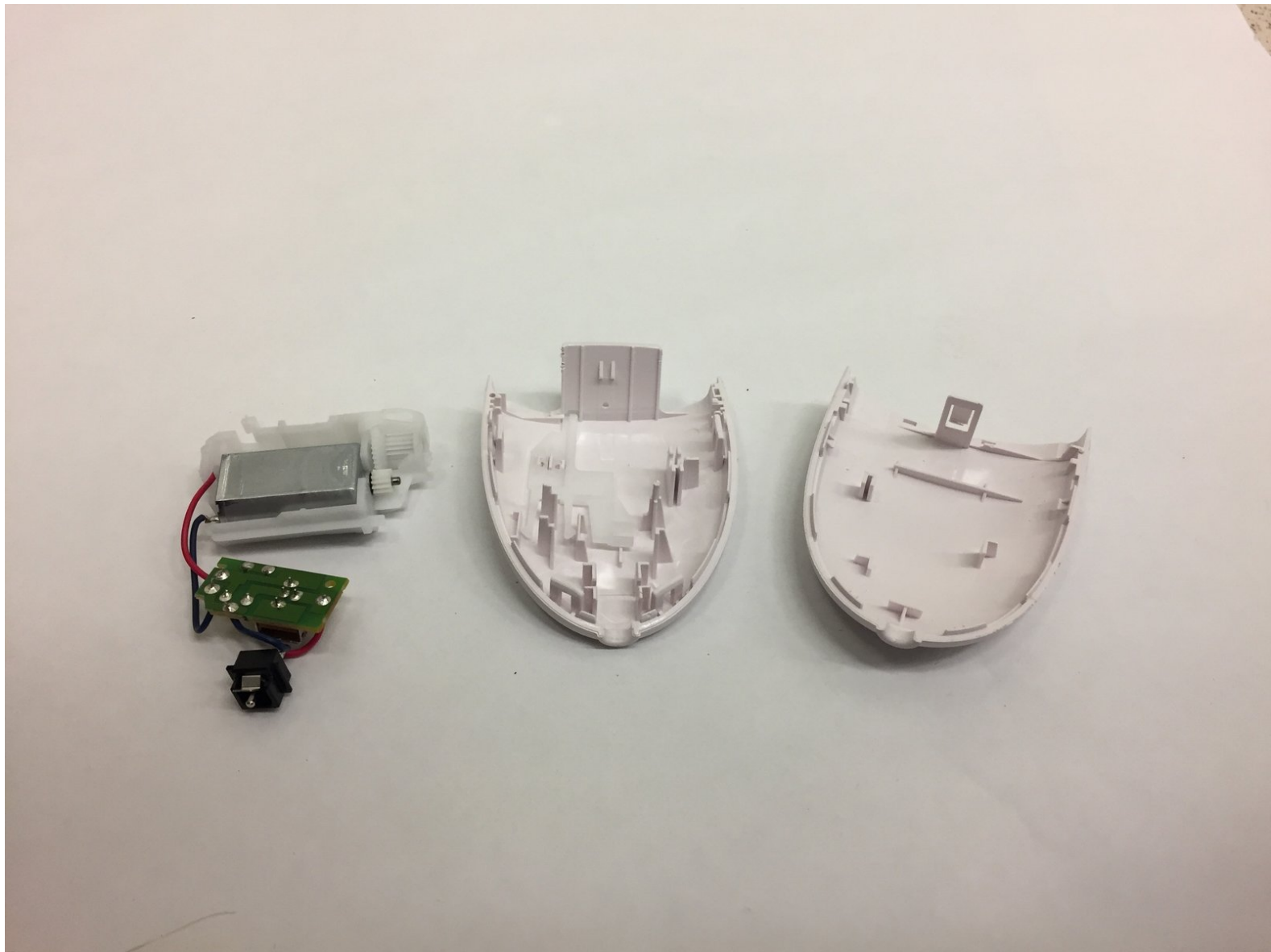




# Philips Satinelle Motor Replacement

This guide will help you replace the motor inside the Philips Satinelle. If the motor is not working, then the device will not turn on.

Written By: Madeline Casalino



## INTRODUCTION

If the epilator is plugged in and receiving power, but still will not turn on, one of the internal components may be broken. This guide will help you remove a broken motor of your Philips Satinelle. It should take no more than 30 minutes to complete this guide.



### TOOLS:

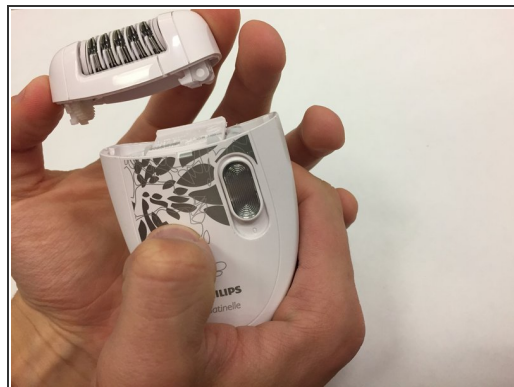
- [Metal Spudger](#) (1)



### PARTS:

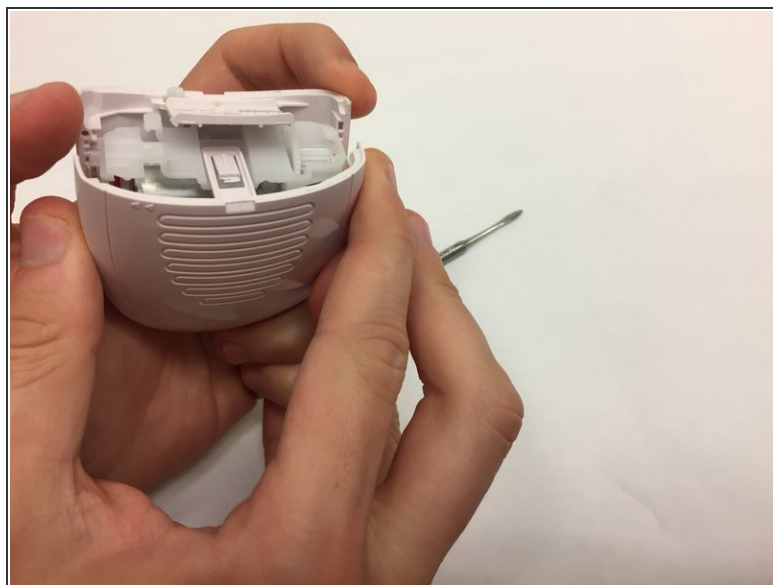
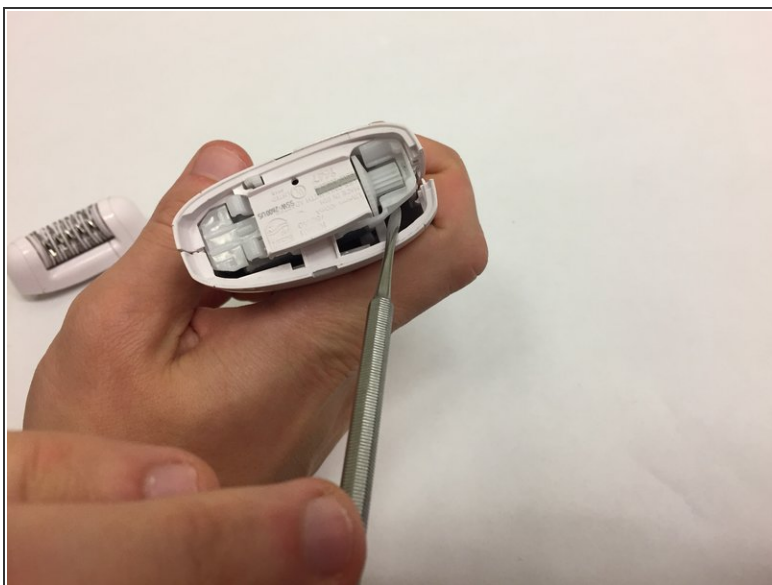
- [fk-180sh-14180 motor](#) (1)

## Step 1 — Plastic Cover



- Remove the head by pushing it to the right.

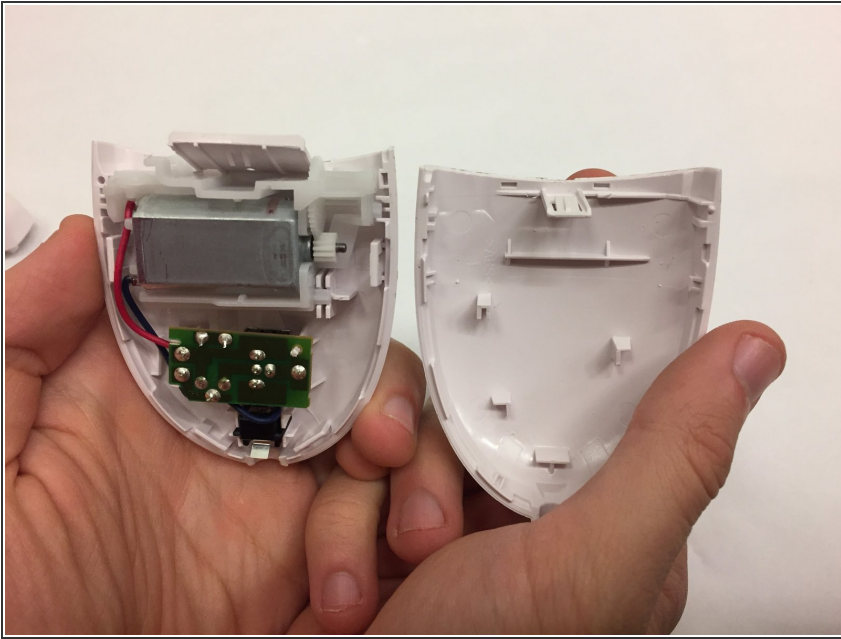
## Step 2



- Use a metal spudger to pry open the casing.

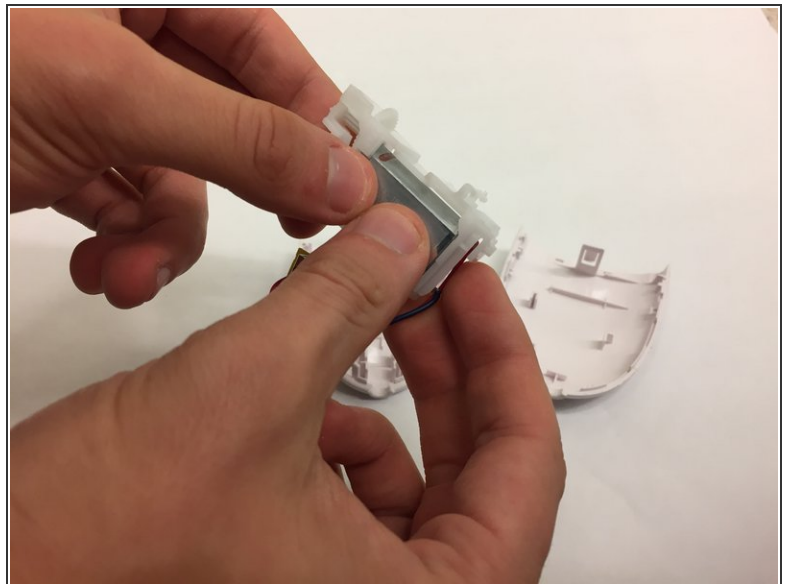
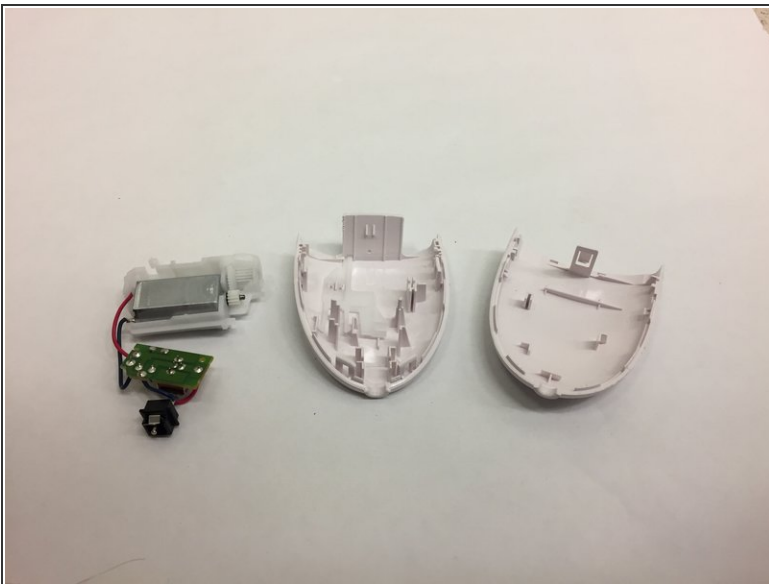
**⚠ Caution:** The epilator's internal components could be damaged if you shove the spudger in too far.

### Step 3



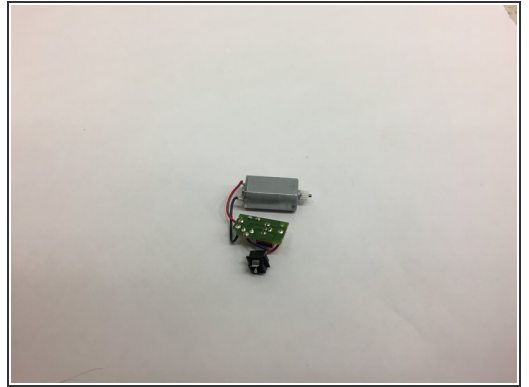
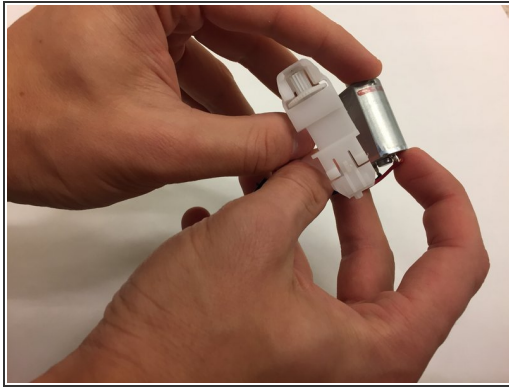
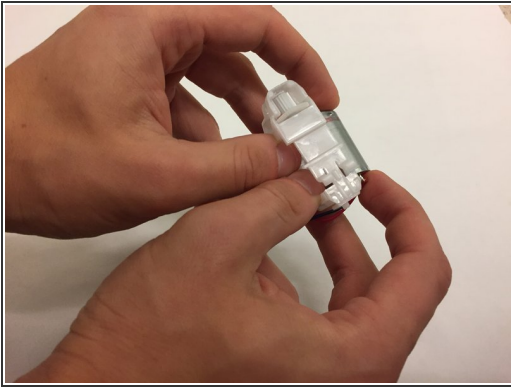
- Pull the plastic casing apart with your hands.
- ⓘ The plastic tab connecting the cover is likely going to break when you pull the device apart. This will not affect the operation of the epilator.

### Step 4 — Motor



- Remove the components.

## Step 5



- Hold the motor with the gears face away from you.
- Gently push the motor out with your thumbs.

To reassemble your device, follow these instructions in reverse order.