



Philips Satinelle Plastic Cover Replacement

This guide will help you replace the plastic cover surrounding the epilator. This cover protects the motor and wires and makes it easy to grip the device.

Written By: Madeline Casalino



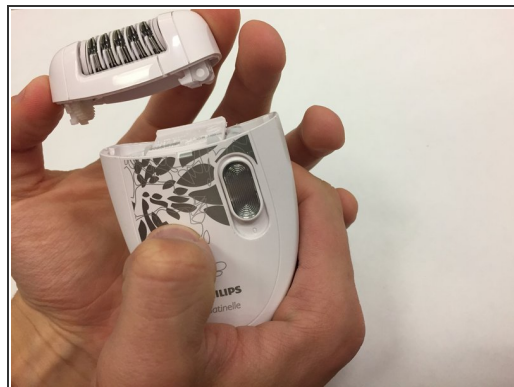
INTRODUCTION

Replace the epilator if the outer cover is so damaged that it becomes troublesome to hold. This is a very easy fix as it only requires you to transfer the components of the broken device into a new cover. You will need a metal spudger. Be careful not to damage any internal components as you pry apart the broken shell. This guide should take five to ten minutes to complete.

TOOLS:

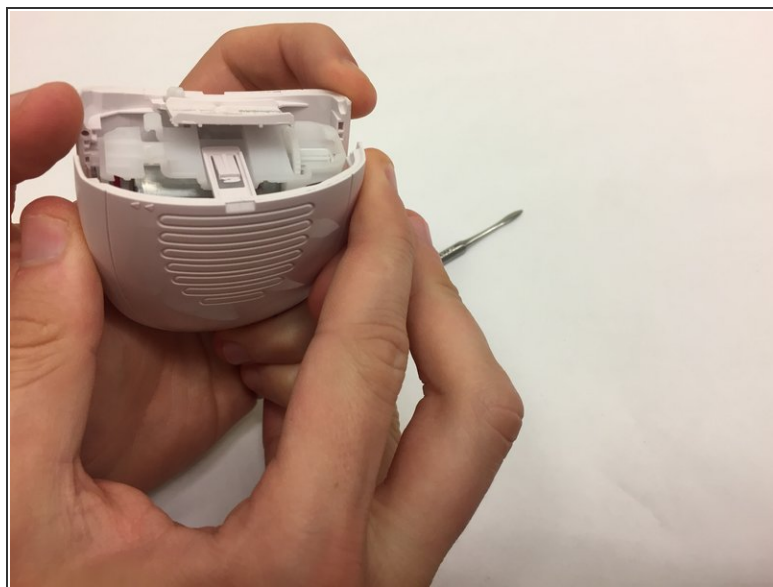
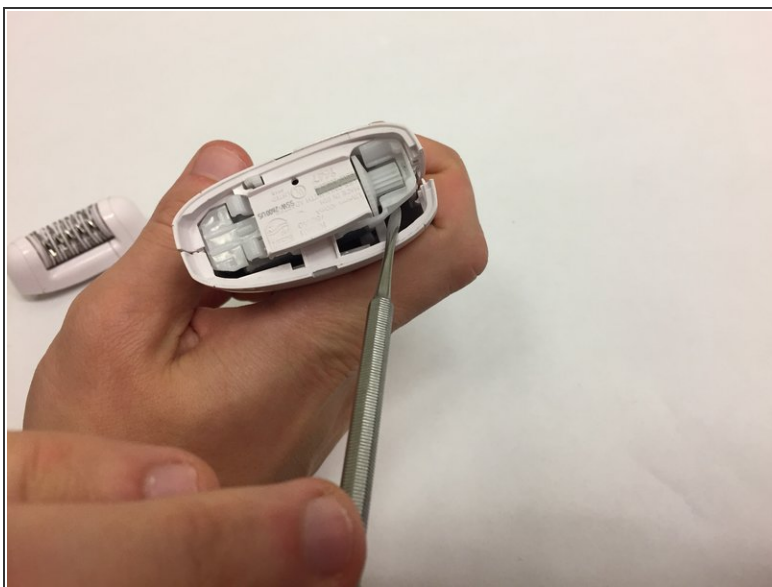
- [Metal Spudger](#) (1)
-

Step 1 — Plastic Cover



- Remove the head by pushing it to the right.

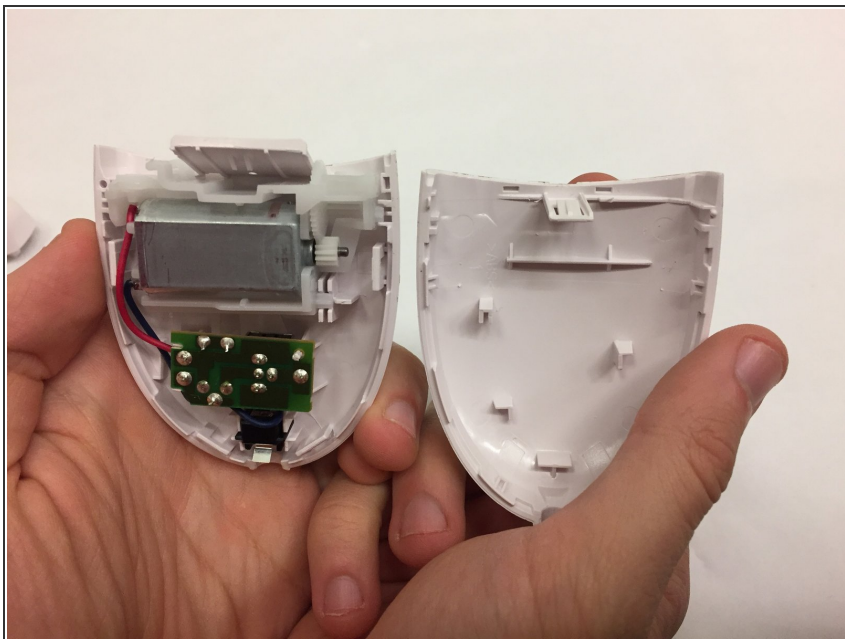
Step 2



- Use a metal spudger to pry open the casing.

⚠ Caution: The epilator's internal components could be damaged if you shove the spudger in too far.

Step 3



- Pull the plastic casing apart with your hands.
- ⓘ The plastic tab connecting the cover is likely going to break when you pull the device apart. This will not affect the operation of the epilator.

To reassemble your device, move the components from the broken shell into the new shell and follow these instructions in reverse order.