



Philips Sonicare 2 Series Battery Replacement

These steps show how to replace the battery of a Philips Sonicare 2 Series toothbrush.

Written By: Jonathan Jarvis



INTRODUCTION

This guide is for the Philips Sonicare 2 series HX6211/46 toothbrush. It shows you how to replace the battery for this toothbrush. Here is a link for a guide how to soldering which will be needed for this guide. [How To Solder and Desolder Connections](#)



TOOLS:

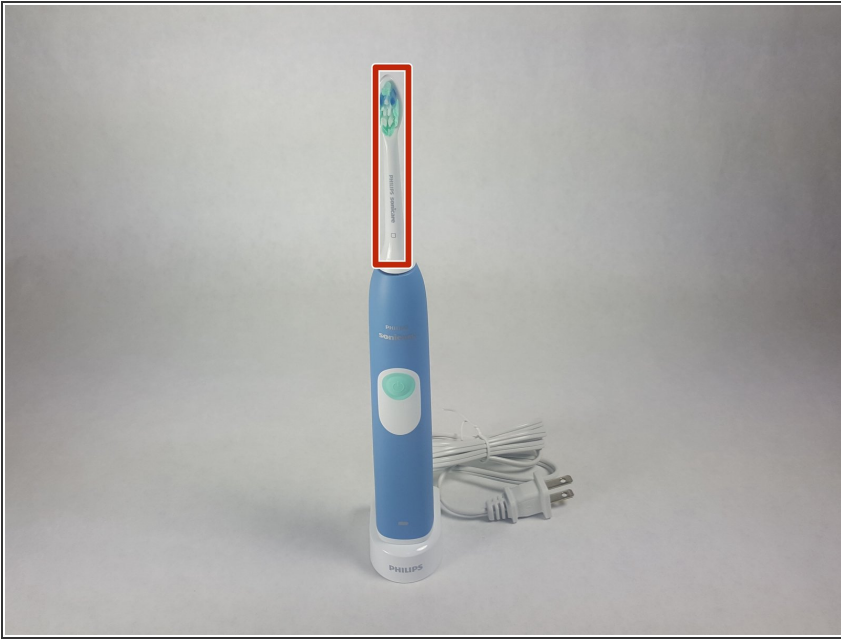
- [Precision Tweezers Set](#) (1)
- [iFixit Opening Tools](#) (1)
- [T8 Torx Screwdriver](#) (1)



PARTS:

- [Philips Sonicare 2 Series Battery](#) (1)

Step 1 — Philips Sonicare 2 Series Disassembly



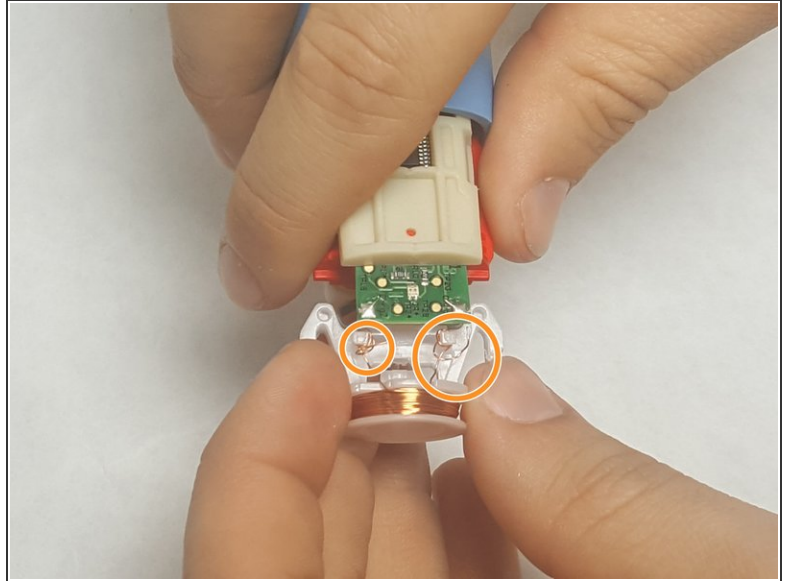
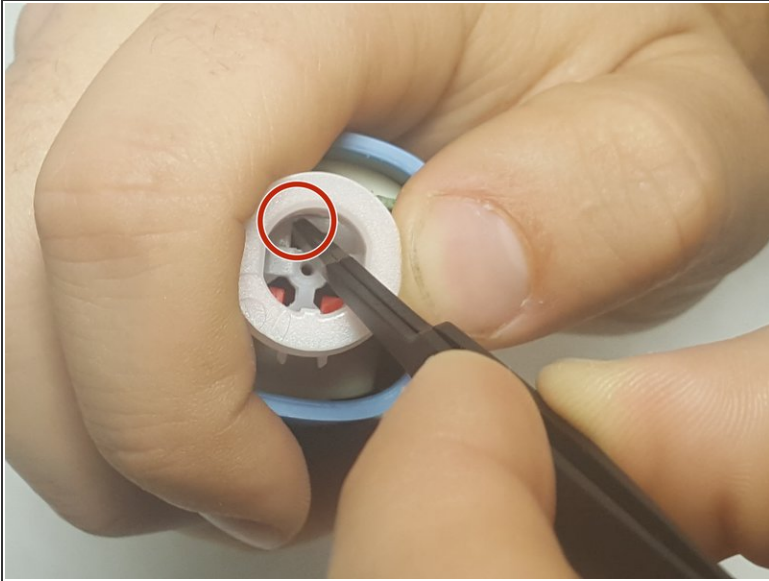
- Remove brush on top of device.

Step 2



- Remove the 12 mm T8 Torx screw from the bottom of the toothbrush. After removing the screw, pry off the base with a plastic opening tool.

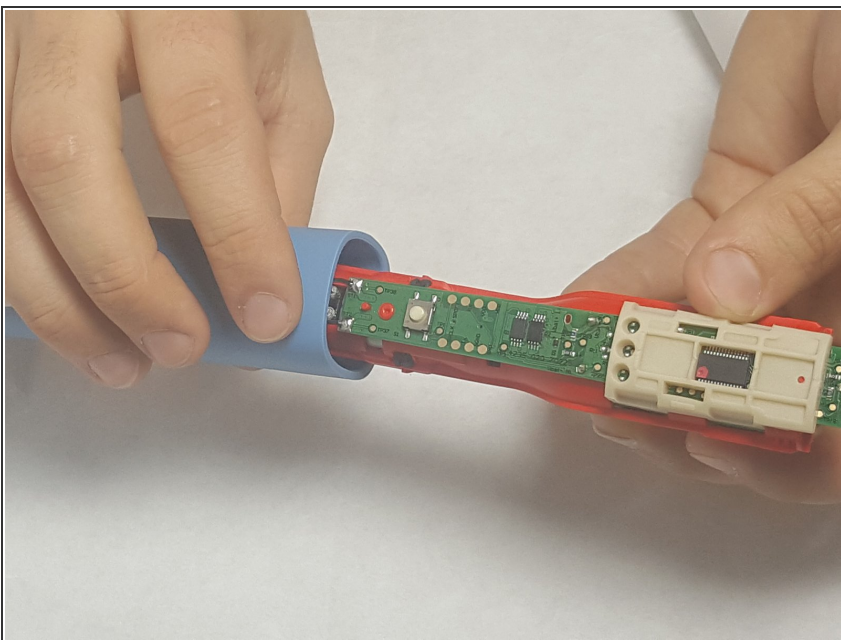
Step 3



- Remove the internal electronic mechanism from the housing by prying the red clips shown in the figure. This removes the charging port.

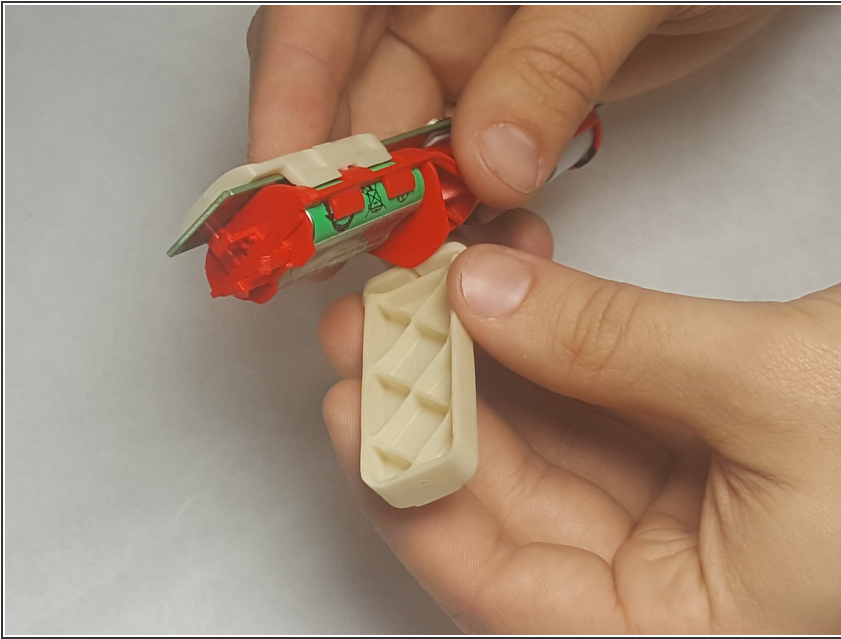
⚠ Be very careful not to damage the charging port during this step. Otherwise you will have to solder this part back to the device as shown in the second figure.

Step 4



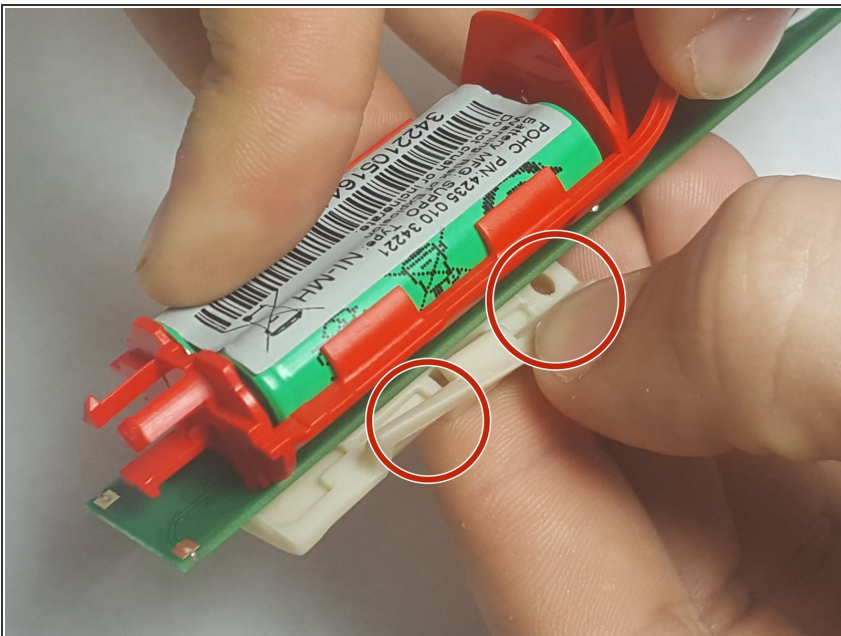
- Next you will be able to remove the internal electronic mechanism as shown in the figure.

Step 5



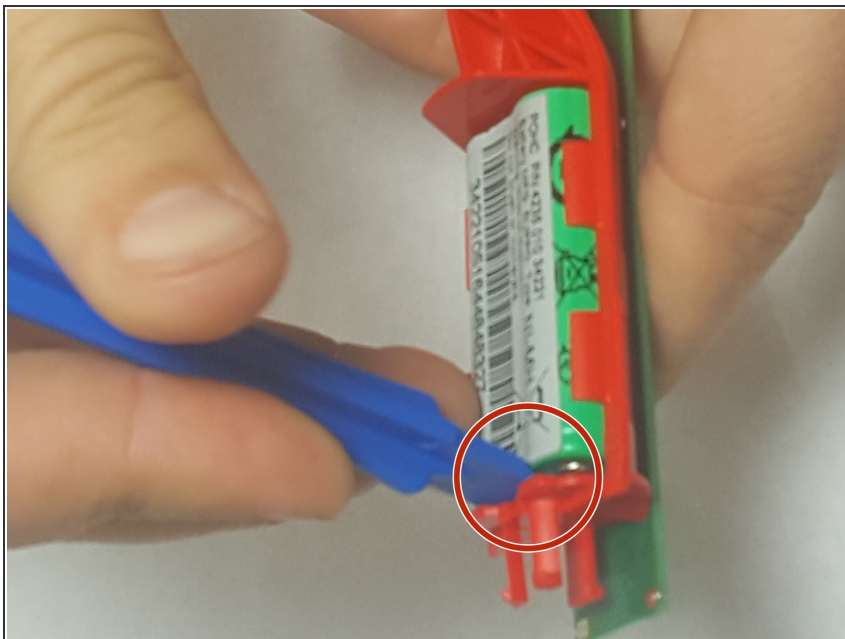
- Remove the white battery cover as shown in the figure.

Step 6



- Remove the white circuit board cover as shown. This cover will require you to pry off the piece from the grooves .

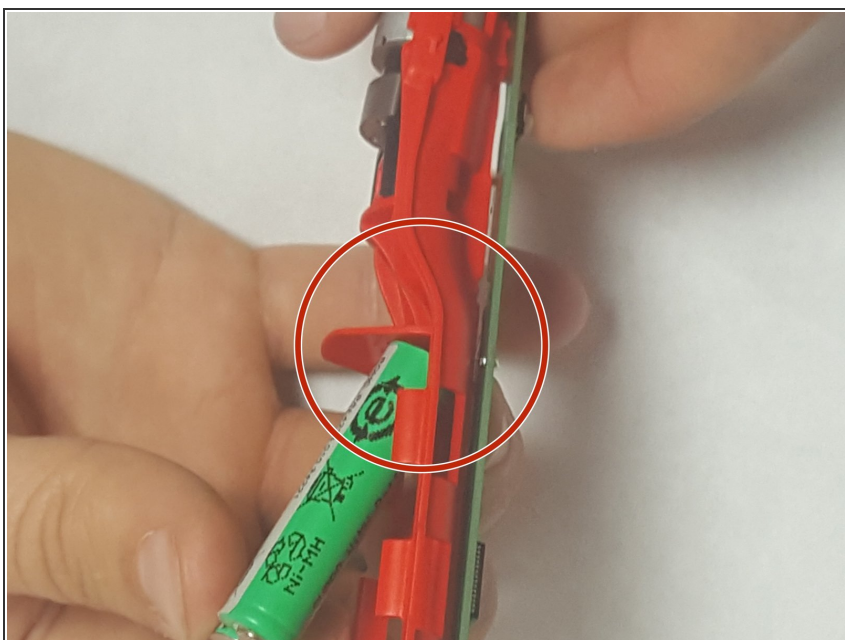
Step 7 — Battery



- Pry the battery out of the side closest to the charging coil as shown in the photo by the red circle.

⚠ Do not use metal tools do to the fact that it could injury you.

Step 8



- Desolder the connection on the opposite end of the battery.

Step 9



- Well, the VOLTAGE of this battery is about 2.8 to 2.9 Volts. The size is same as that of TWO AAA Cells. Two AAA in series can easily replace the existing battery. Ni-Mh AAA cells of Energizer can do the job. Disconnect the existing battery but don't remove the metallic connection to the circuit.

To reassemble your device, follow these instructions in reverse order.