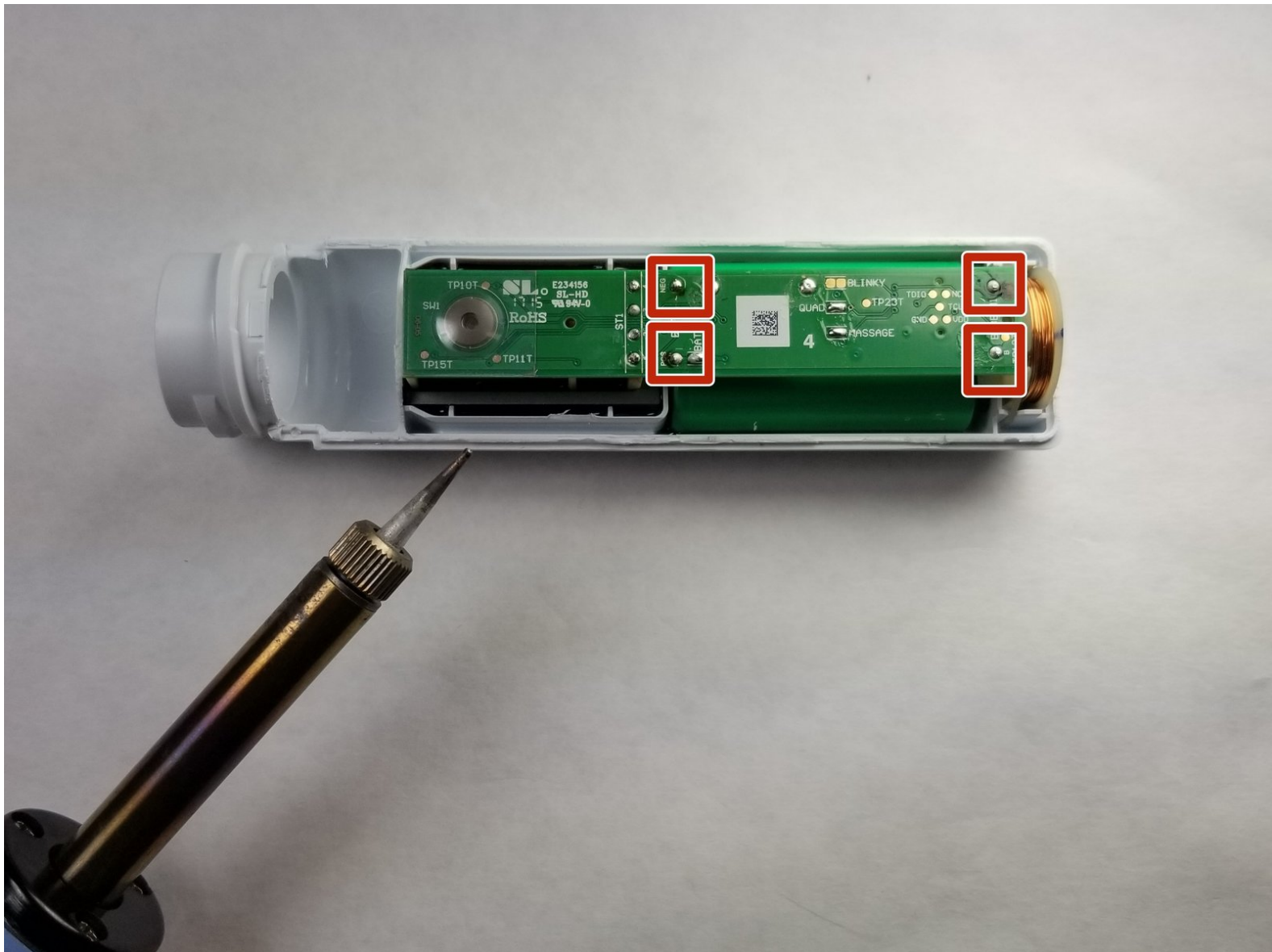




Philips Sonicare Essence 1 Motherboard Replacement

To replace the motherboard, the first step is to sever its connection to the battery, and the second step is to remove the motherboard from the mounts.

Written By: Joseph Swindeman



INTRODUCTION

We will teach how to replace a faulty motherboard by severing its connection to the battery and removing it from the mounts.



TOOLS:

- [iFixit Opening Picks set of 6](#) (1)
 - [Spudger](#) (1)
 - [Soldering Iron](#) (1)
-

Step 1 — Brush Head



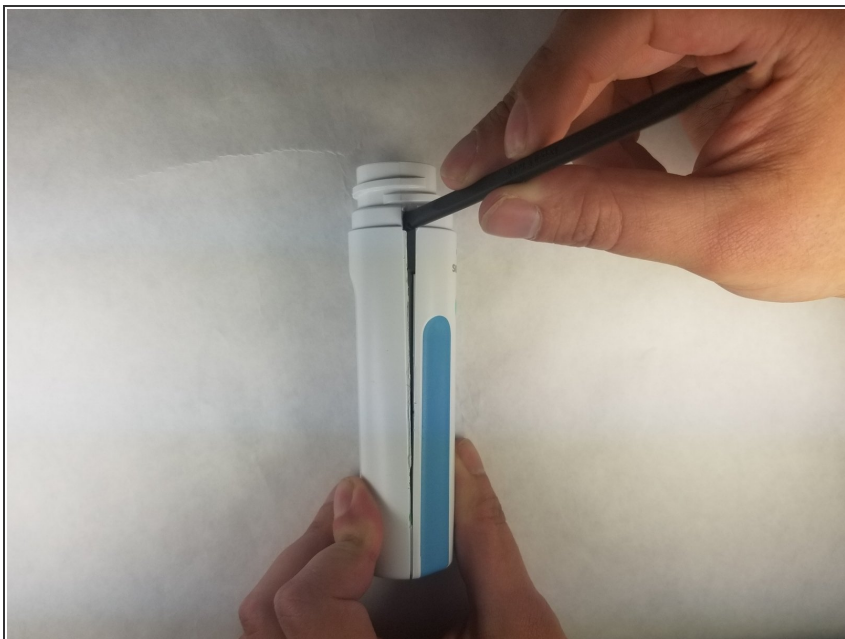
- Place one hand on the toothbrush handle and one on the toothbrush head.

Step 2



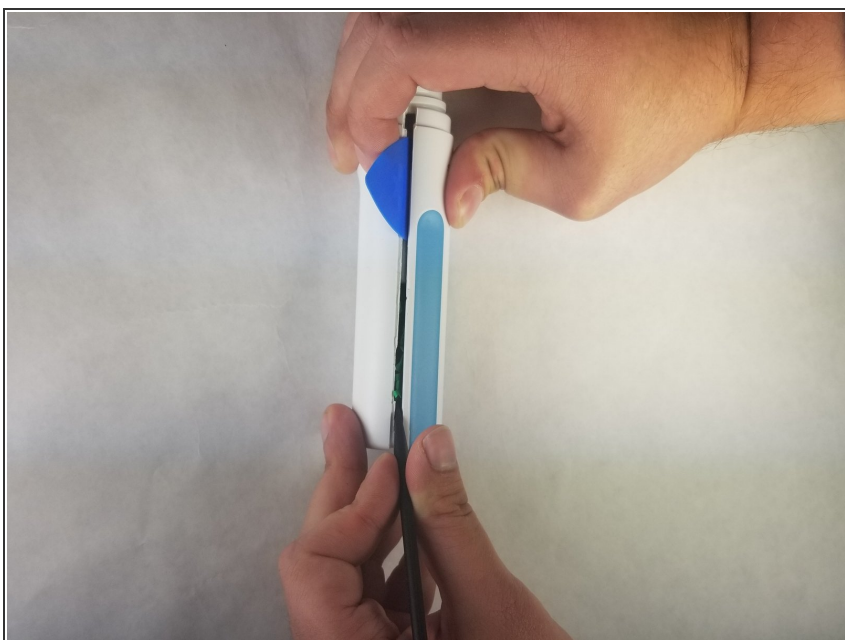
- Separate the toothbrush head from the body by twisting it in a counter-clockwise direction.

Step 3 — Front Handle Panel



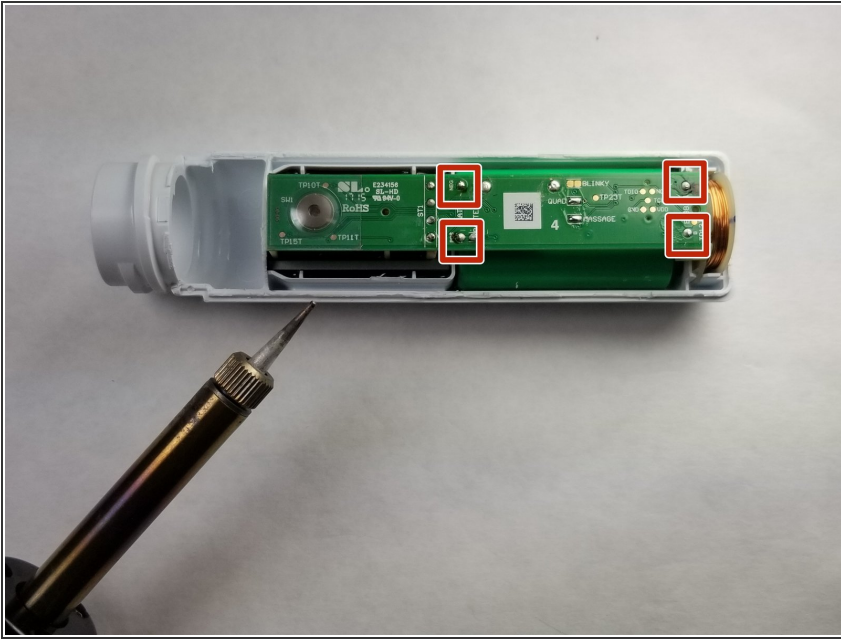
- Insert the spudger along the seam at the top of the panel.
- Begin to pry open the panel.

Step 4



- Insert the plastic pick at the top of the seam that has already been slightly pried open.
- Continue down the seam, prying the rest of the panel open with the spudger.

Step 5 — Motherboard



- Apply a soldering iron to the mount-connectors and copper-wire connectors until the motherboard can be removed.

Step 6



- Lift the motherboard straight up.

To reassemble your device, follow these instructions in reverse order.