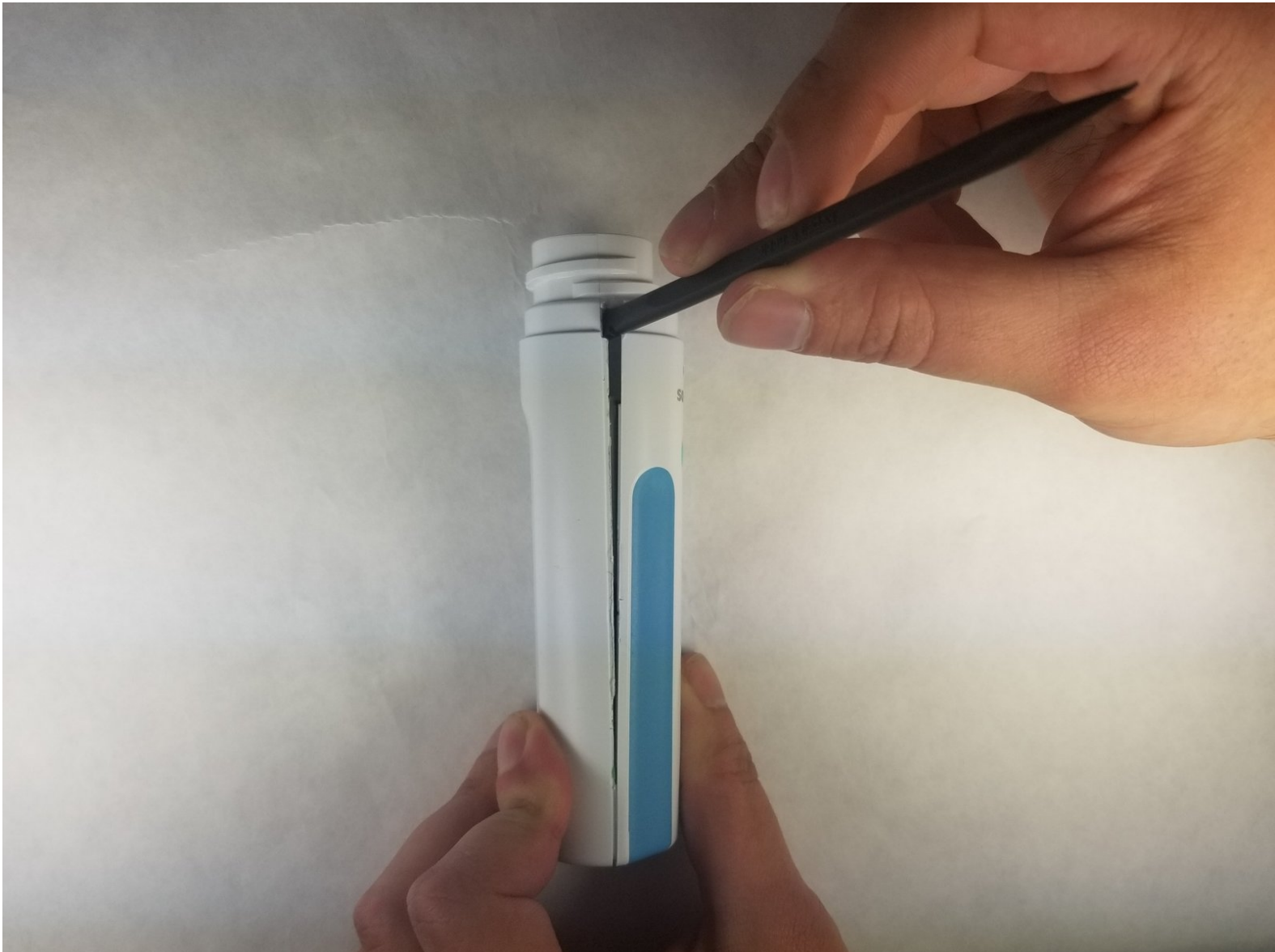




Philips Sonicare Essence 1 Series Front Handle Panel Replacement

In this guide we will remove the front panel from the handle of the Philips Sonicare 1 series.

Written By: Samantha Miller



INTRODUCTION

To enter the housing of the handle of the toothbrush, the first step is to remove the back panel. We will be explaining how to pry off the panel to access the other parts inside.



TOOLS:

- [iFixit Opening Picks set of 6](#) (1)
 - [Spudger](#) (1)
-

Step 1 — Brush Head



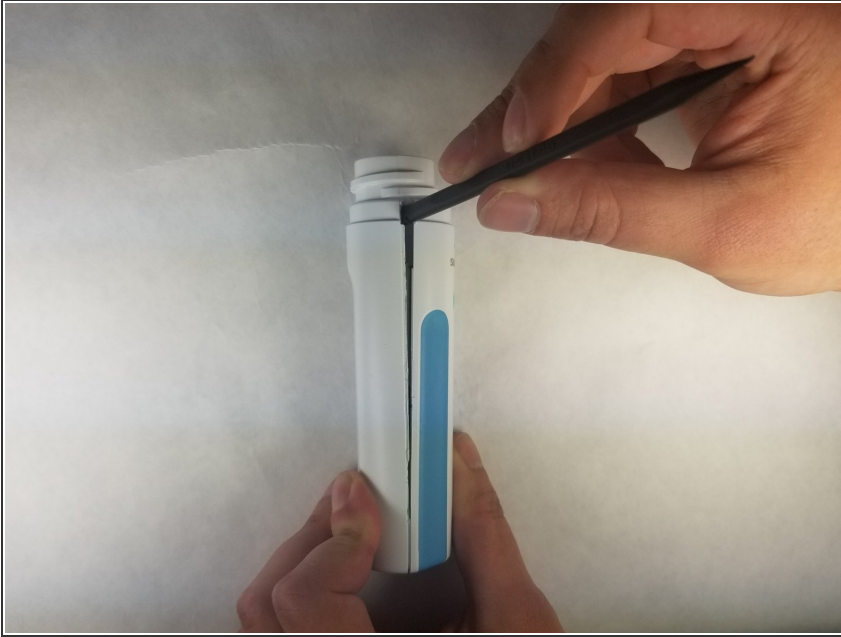
- Place one hand on the toothbrush handle and one on the toothbrush head.

Step 2



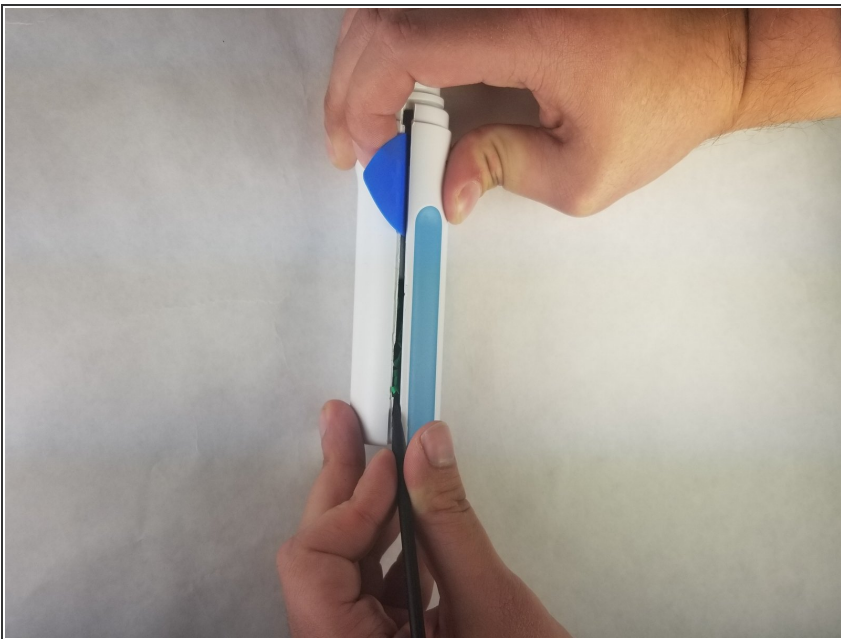
- Separate the toothbrush head from the body by twisting it in a counter-clockwise direction.

Step 3 — Front Handle Panel



- Insert the spudger along the seam at the top of the panel.
- Begin to pry open the panel.

Step 4



- Insert the plastic pick at the top of the seam that has already been slightly pried open.
- Continue down the seam, prying the rest of the panel open with the spudger.

To reassemble your device, follow these instructions in reverse order.