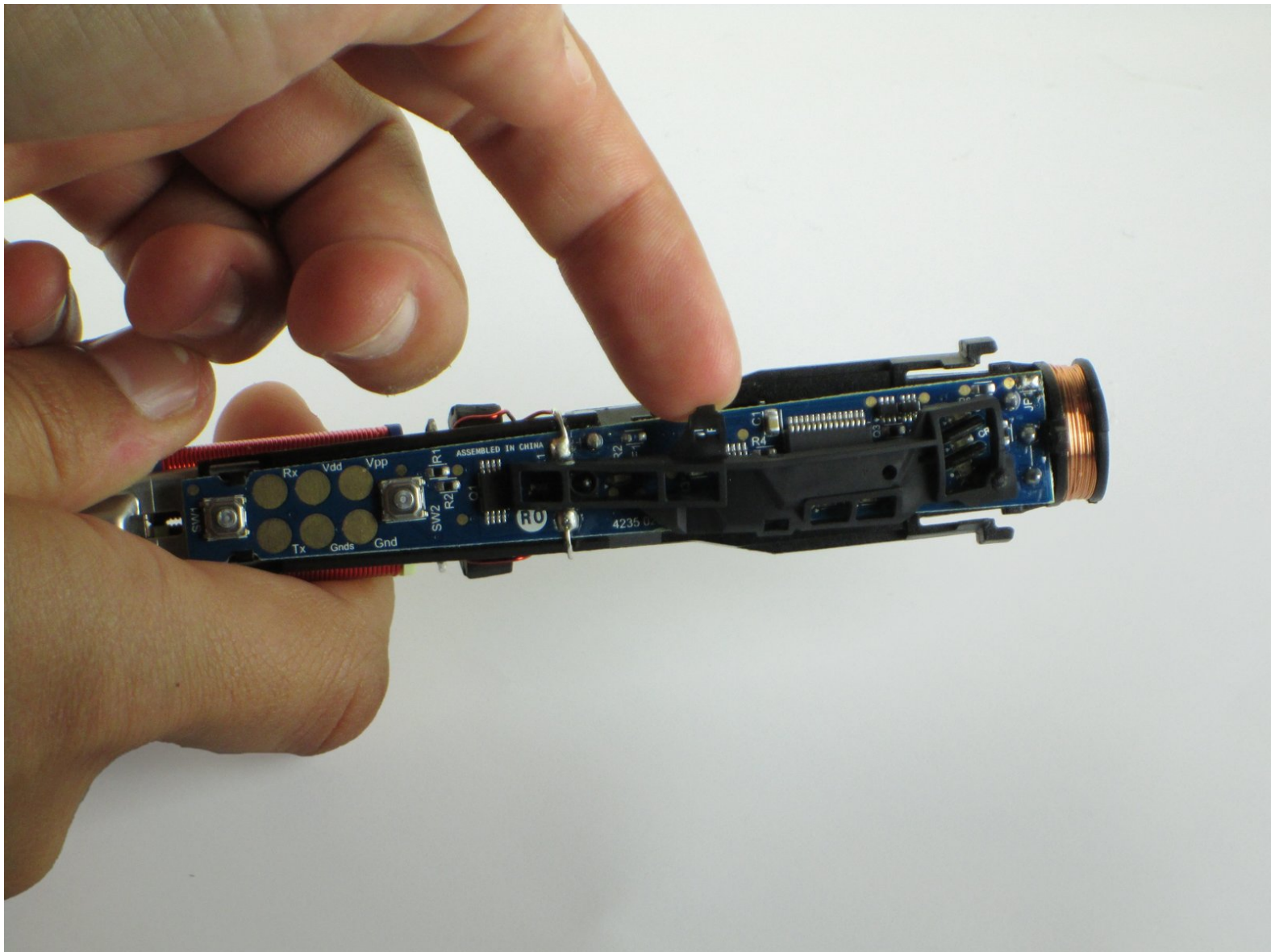




Philips Sonicare FlexCare Battery Replacement

Written By: Joanna Moraza



INTRODUCTION

The rechargeable battery in the tooth brush will be replaced.



TOOLS:

- [Soldering Iron](#) (1)
- [Metal Spudger](#) (1)
- [Spudger](#) (1)
- [Solder](#) (1)
- [Desoldering Braid](#) (1)



PARTS:

- [Sonicare Flexcare/Flexcare+/Healthy White/DiamondClean Replacement Battery](#) (1)

Step 1 — Battery



- Pull the brush head away from the handle to remove it.

Step 2



- Push the flat edge of a metal or nylon spudger between the seal and the toothbrush body and pry it open. Do this all around the edge until the seal is partially sticking out.

Step 3



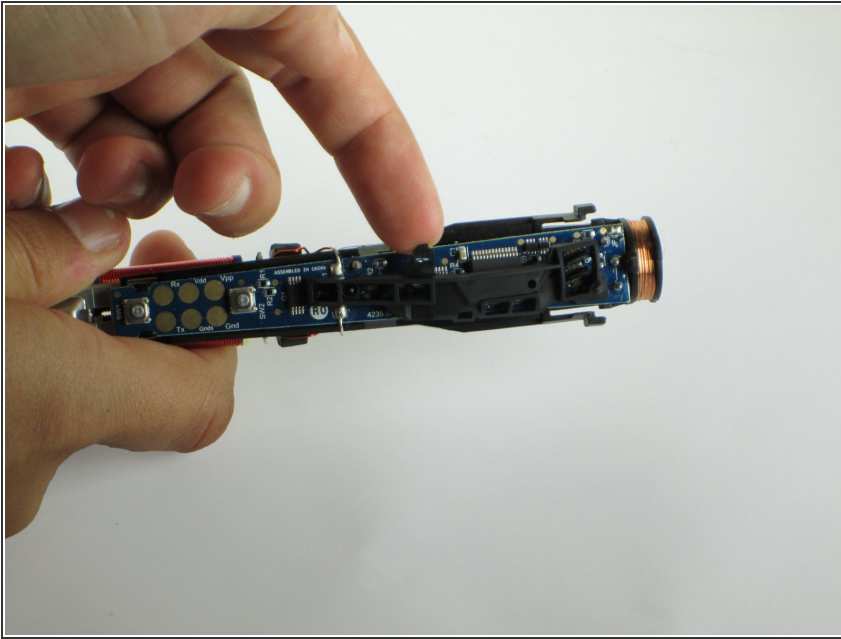
- Apply pressure to the shaft by pressing it against a firm and flat surface. Continue to apply pressure until the electronics located in the interior are exposed.

Step 4



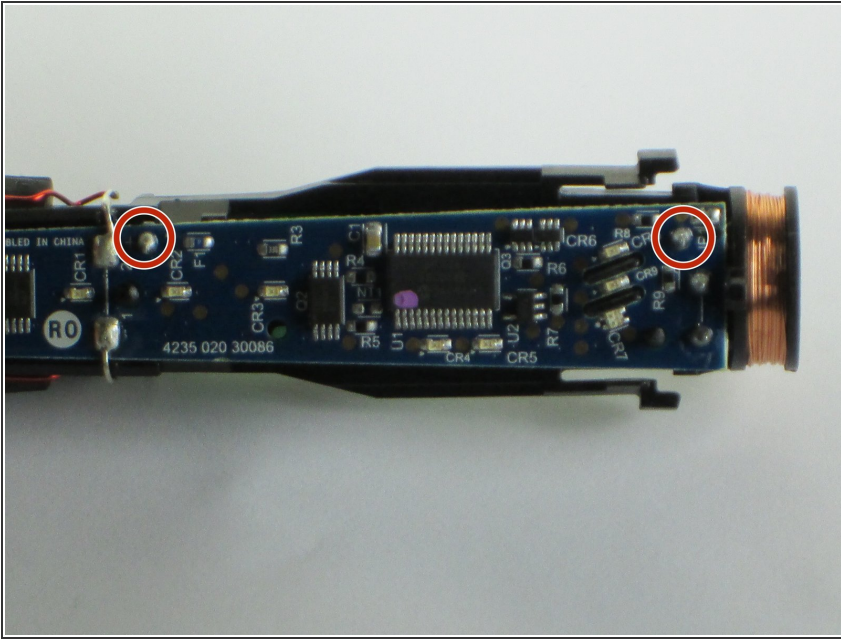
- Grab the circular, plastic base with the o-ring and pull it outward.

Step 5



- Remove the cap that is attached to the end of the interior by removing the two clasps that are holding it in place.

Step 6



- Desolder the battery from the circuit board. Here is a guide on [how to desolder](#). Remove the old battery and replace it. Using the same guide, solder the battery in place.
- The soldering points are shown in red.

To reassemble your device, follow these instructions in reverse order.